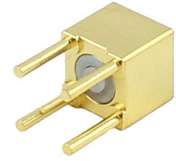


## SMP Male (Plug) Smooth Bore CM PCB Connector Thru Hole, Solder



### SC5361

#### Configuration

- Smooth Bore CM SMP Male Connector
- 50 Ohms
- Straight Body Geometry
- Connector Interface Types: Thru Hole

#### Features

- Operating Frequency of 18 GHz Max.
- Excellent VSWR of 1.25:1
- Blind Mate Connector
- Gold Plated Beryllium Copper Contact
- Contact plating according to MIL-G-45204

#### Applications

- General Purpose Test
- PCB Applications

#### Description

SMP Male Smooth Bore CM Connector Solder Attachment for Thru hole Cable,, part number SC5361, from Fairview Microwave is in-stock and ships same day. This SMP male connector operates up to a maximum frequency of 18 GHz and offers excellent VSWR of 1.25:1. This blind mate connector is ideal for applications without direct visual or tactile access to the connection point, for example, when two circuit boards need to be mated.

Fairview's SMP male connector SC5361 datasheet specifications and outline drawing are shown in this PDF below. Our extensive offering of RF, microwave and millimeter wave connectors allows designers to configure and customize their signal connections however they like. From providing an I/O for a board design to creating a custom cable assembly configuration, Fairview Microwave has a connector solution to meet your needs. Fairview Microwave also has the expertise to build your custom cable assemblies for you and ship them same-day.

#### Electrical Specifications

Description	Minimum	Typical	Maximum	Units
Frequency Range	DC		18	GHz
VSWR			1.25:1	
Impedance		50		Ohms

#### Mechanical Specifications

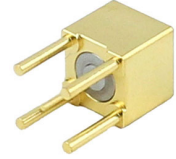
##### Size

Length	0.182 in [4.62 mm]
Width	0.2 in [5.08 mm]
Height	0.2 in [5.08 mm]
Weight	0.003 lbs [1.36 g]

#### Material Specifications

Description	Material	Plating
Contact	Beryllium Copper	Gold MIL-G-45204
Insulation	PTFE	
Body	Beryllium Copper	Gold MIL-G-45204

## SMP Male (Plug) Smooth Bore CM PCB Connector Thru Hole, Solder



**SC5361**

---

### Environmental Specifications

**Temperature**

Operating Range -55 to +155 deg C

**Compliance Certifications** (see [product page](#) for current document)

### Plotted and Other Data

Notes:

SMP Male (Plug) Smooth Bore CM PCB Connector Thru Hole, Solder from Fairview Microwave is in-stock and available to ship same-day. All of our RF/microwave products are available off-the-shelf from our ISO 9001:2008 certified facilities in Lewisville, Texas. Fairview Microwave is RF on-demand.

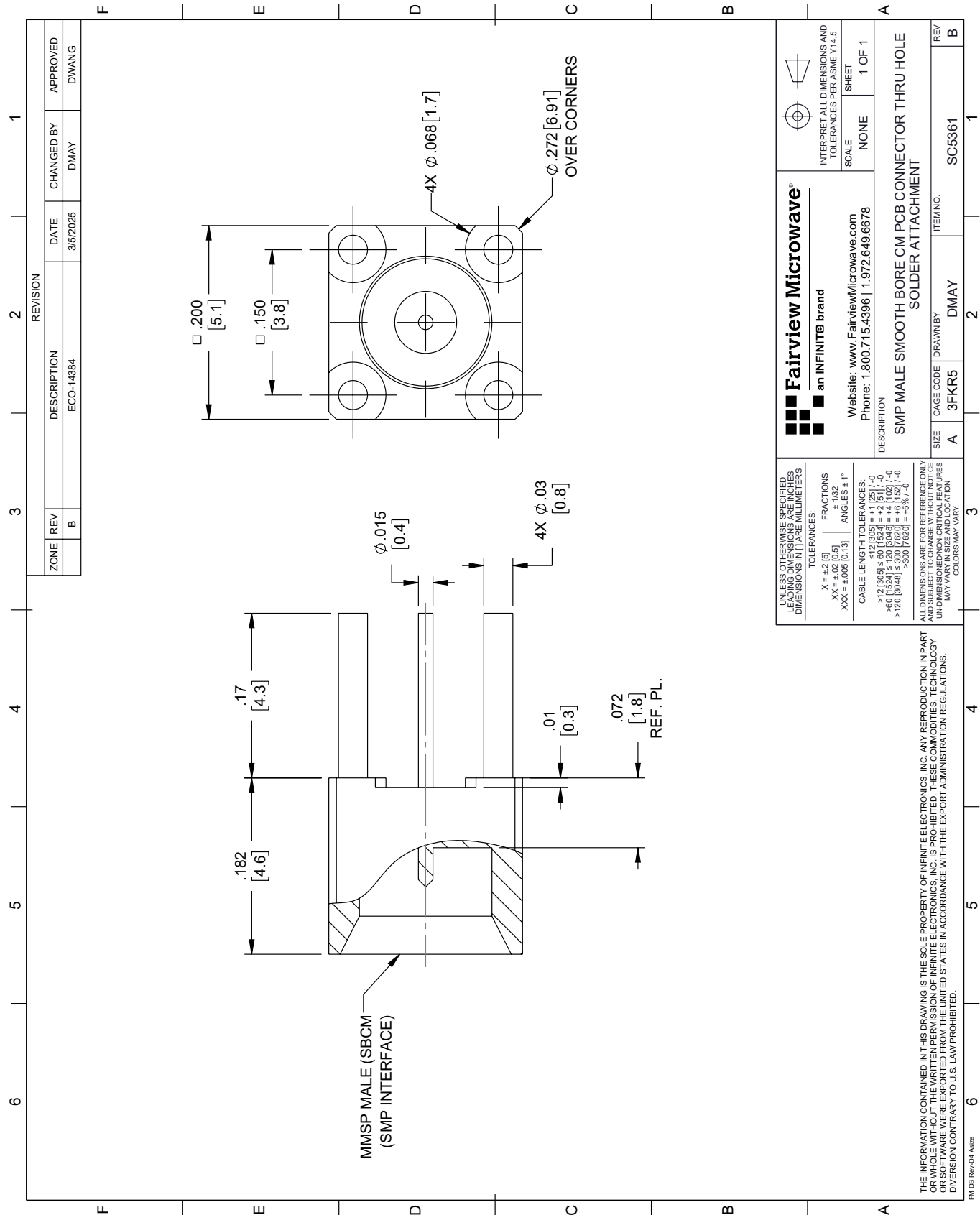
For additional information on this product, please click the following link: [SMP Male \(Plug\) Smooth Bore CM PCB Connector Thru Hole, Solder SC5361](#)

URL: <https://www.fairviewmicrowave.com/product/rf-connectors/smp-male-standard-smooth-bore-thru-hole-pcb-connector-sc5361.html>

The information contained within this document is accurate to the best of our knowledge and representative of the part described herein. It may be necessary to make modifications to the part and/or the documentation of the part in order to implement improvements. Fairview Microwave reserves the right to make such changes as required. Unless otherwise stated, all specifications are nominal. Fairview Microwave does not make any representation or warranty regarding the suitability of the part described herein for any particular purpose, and Fairview Microwave does not assume liability arising out of the use of any part or document.

SC5361 CAD Drawing

SMP Male (Plug) Smooth Bore CM PCB Connector Thru Hole, Solder



<b>Fairview Microwave®</b> an INFINITI® brand		Website: <a href="http://www.FairviewMicrowave.com">www.FairviewMicrowave.com</a> Phone: 1.800.715.4396   1.972.649.6678		INTERPRET ALL DIMENSIONS AND TOLERANCES PER ASME Y14.5	
UNLESS OTHERWISE SPECIFIED, LEADING DIMENSIONS ARE IN INCHES. DIMENSIONS IN [ ] ARE IN MILLIMETERS.		TOLERANCES: X = ±.2 [5] .XX = ±.02 [0.5] .XXX = ±.005 [0.13]		SCALE: NONE	
ALL DIMENSIONS ARE FOR REFERENCE ONLY. UNLESS OTHERWISE SPECIFIED, DIMENSIONS MAY VARY IN SIZE AND LOCATION. COLORS MAY VARY.		FRACTIONS: ± 1/32 ANGLES: ± 1°		SHEET: 1 OF 1	
CABLE LENGTH TOLERANCES: >12 [305] ≤ 60 [1524] = +.12 [-0] / -.0 >60 [1524] ≤ 120 [3048] = +.12 [-0] / -.0 >120 [3048] ≤ 300 [7620] = +.12 [-0] / -.0 >300 [7620] = +.12 [-0] / -.0		DESCRIPTION: SMP MALE SMOOTH BORE CM PCB CONNECTOR THRU HOLE SOLDER ATTACHMENT		ITEM NO. SC5361	
SIZE: A		CAGE CODE: 3FKR5		DRAWN BY: DMAY	
REV: B		ITEM NO. SC5361		REV: B	