

0.5 to 40 dB Continuously Variable Attenuator N Female to N Female from 850 MHz to 2.5 GHz Rated to 15 Watts in a Dial Design
Electrical Specifications*

Description	Min	Typ	Max	Units
Frequency Range	0.85		2.5	GHz
Impedance		50		Ohms
Attenuation Value		0.5 to 40		dB
Step Size		0		dB
Step Type		Dial		
Insertion Loss			0.5	dB
Input Power			15	Watts
VSWR			1.5:1	

* Values at 25°C, sea level

Mechanical Specifications
Size

Length	4.13 in [104.9 mm]
Width	3.13 in [79.5 mm]
Height	1 in [25.4 mm]
Weight	1.501 lbs [680.84 g]

Connectors

Description	Connector 1	Connector 2
Type	N Female	N Female
Contact Material & Plating	Beryllium Copper, Gold	Beryllium Copper, Gold
Body Material & Plating	Stainless Steel	Stainless Steel


Features:

- Design: Continuously Variable, Bidirectional Attenuator
- Connector 1: N Female
- Connector 2: N Female
- Body Material and Plating: Aluminum

Fairview Microwave
 301 Leora Ln., Suite 100
 Lewisville, TX 75056
 Tel: 1-800-715-4396 / (972) 649-6678
 Fax: (972) 649-6689
www.fairviewmicrowave.com
sales@fairviewmicrowave.com

Compliance Certifications (see [product page](#) for current document)

Plotted and Other Data

Notes:

- Values at 25 °C, sea level

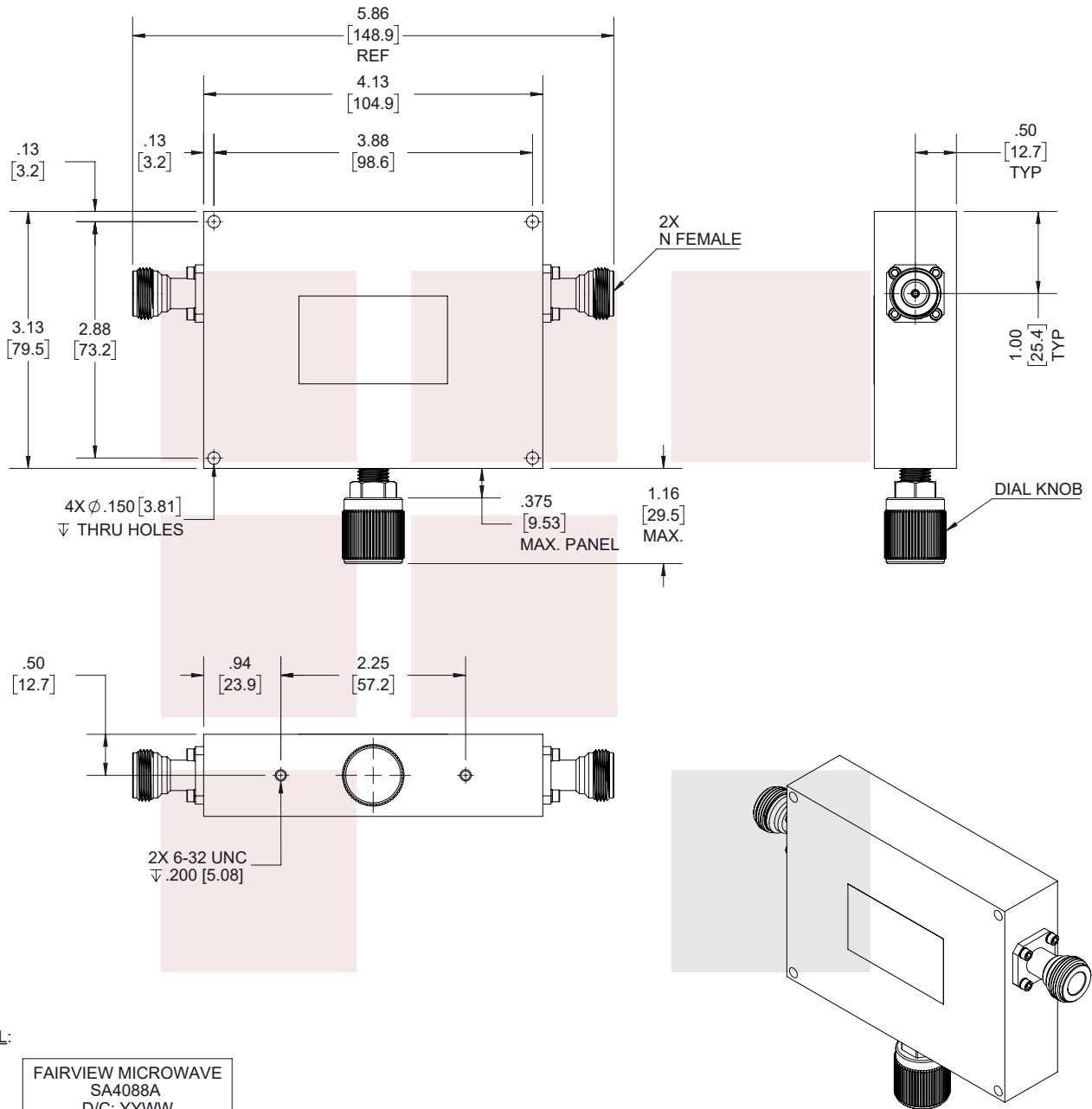
0.5 to 40 dB Continuously Variable Attenuator N Female to N Female from 850 MHz to 2.5 GHz Rated to 15 Watts in a Dial Design from Fairview Microwave is in-stock and available to ship same-day. All of our RF/microwave products are available off-the-shelf from our ISO 9001:2008 certified facilities in Lewisville, Texas. Fairview Microwave is RF on-demand.

For additional information on this product, please click the following link: [0.5 to 40 dB Continuously Variable Attenuator N Female to N Female from 850 MHz to 2.5 GHz Rated to 15 Watts in a Dial Design SA4088A](#)

URL: <https://www.fairviewmicrowave.com/40db-continuously-variable-attenuator-n-female-n-female-15-watts-sa4088a-p.aspx>

The information contained in this document is accurate to the best of our knowledge and representative of the part described herein. It may be necessary to make modifications to the part and/or the documentation of the part, in order to implement improvements. Fairview Microwave reserves the right to make such changes as required. Unless otherwise stated, all specifications are nominal. Fairview Microwave does not make any representation or warranty regarding the suitability of the part described herein for any particular purpose, and Fairview Microwave does not assume any liability arising out of the use of any part or documentation.

REVISIONS			
REV.	DESCRIPTION	DATE	APPROVED
A	INITIAL RELEASE	7/1/2020	S.PONG



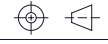
THESE COMMODITIES, TECHNOLOGY OR SOFTWARE WERE EXPORTED FROM THE UNITED STATES IN ACCORDANCE WITH THE EXPORT ADMINISTRATION REGULATIONS. DIVERSION CONTRARY TO U.S. LAW PROHIBITED.

TITLE
0.5 to 40 dB Continuously Variable Attenuator N Female to N Female from 850 MHz to 2.5 GHz Rated to 15 Watts in a Dial Design

UNLESS OTHERWISE SPECIFIED LEADING DIMENSIONS ARE INCHES
DIMENSIONS IN [] ARE MILLIMETERS

TOLERANCES:		CABLE LENGTH (L) TOLERANCES:	
.X = ±.2 [5.08]	FRACTIONS ± 1/32	L ≤ 12 [305] = +1 [25] / -0	
.XX = ±.02 [.51]	ANGLES ± 1°	12 [305] < L ≤ 60 [1524] = +2 [51] / -0	
.XXX = ±.005 [.13]		60 [1524] < L ≤ 120 [3048] = +4 [102] / -0	
		120 [3048] < L ≤ 300 [7620] = +6 [152] / -0	
		300 [7620] < L = +5%L / -0	

THIRD-ANGLE PROJECTION



THE INFORMATION AND DESIGN IN THIS DOCUMENT IS THE PROPERTY OF FAIRVIEW MICROWAVE CORPORATION. ALL RIGHTS RESERVED.

SHEET 1 OF 1

ALL DIMENSIONS SHOWN ARE FOR REFERENCE ONLY.

SCALE N/A

SIZE A	CAGE CODE 3FKR5	DRAWN BY K.DANG	ITEM NO. SA4088A	REV A
-----------	--------------------	--------------------	---------------------	----------

T-Rev.D