

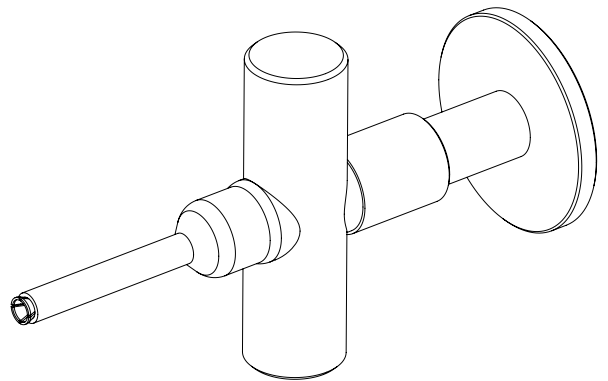
NOTES:

- **BODY & CONTACT:** PASSIVATED STAINLESS STEEL, AMS-QQ-P-35.
- **COLLET:** BERYLLIUM COPPER, NICKEL AMS-C-26074.
- **SPRING:** PASSIVATED STAINLESS STEEL, AMS-QQ-P-35.

STANDARD TOLERANCES

- .X ±0.2
- .XX ±0.01
- .XXX ±0.005

*STANDARD TOLERANCES APPLY ONLY TO DIMENSIONS IN INCHES



Fairview Microwave
 RF COMPONENTS ON DEMAND. *Done!*

NOTES:

1. UNLESS OTHERWISE SPECIFIED ALL DIMENSIONS ARE NOMINAL.
2. ALL SPECIFICATIONS ARE SUBJECT TO CHANGE WITHOUT NOTICE AT ANY TIME.
3. DIMENSIONS ARE IN INCHES [mm].

TITLE

DWG NO

MMTL-17123

CAGE CODE

3FKR5

CAD FILE

01/04/19

SHEET

1 OF 1

SCALE N/A

SIZE A

7361