

WR-42 Waveguide Electromechanical Relay Latching Switch SPDT 26.5 GHz Max Frequency, 800 Watts K Band UG-595/U Square Cover Flange

The FMWGS6006 electromechanical WR-42 waveguide switch operates across a wide frequency range from 18 GHz to 26.5 GHz and is configured for single pole double throw (SPDT) operation. A shorting plate on port 3 can be removed for optional double pole double throw (DPDT) operation. This innovative design features a latching Self Cut Off actuator and patented motor drive with arc suppression. The motor drive housing supports a viewable position indicator window and a cover that can be removed for manual override access.

Impressive performance includes 0.013 dB typ insertion loss, 90 dB typ Isolation, 1.07:1 typ VSWR, and an operating life of 250K cycles minimum. The design operates across a temperature range of -40°C to +85°C, requires +12Vdc nominal bias voltage, and has an input power rating of up to 0.8 kW CW maximum. The waveguide ports have Grooved UG-595/U Square Cover Flanges (O-Rings included) for pressurized operation. The rugged package design is fully weatherized for up to 100% humidity exposure and supports a quick connect circular 6 pin MIL-SPEC DC bias connector with mate included.

Electrical Specifications

Switch Type	SPDT
Actuator Type	Latching
Switching Sequence	Break Before Make
Actuator Options	Self Cut Off, Window Indicator, Manual Override
Polarity	Negative Common

Description	Min	Typ	Max	Units
Frequency Range	18		26.5	GHz
Impedance		50		Ohms
Operating Voltage	10	12	20	Volts
Actuating Current @ 12 Volts		390	1,000	mA
VSWR		1.07:1	1.1:1	
Insertion Loss		0.013	0.15	dB
Isolation	60	90		dB
Switching Time		54	80	ms
Input Power (CW)			800	Watts
Input Power, Peak 10% Duty Cycle			25.3	KWatts

Mechanical Specifications

Size	
Length	4.1 in [104.14 mm]
Width/Diameter	2.11 in [53.59 mm]
Height	2.11 in [53.59 mm]
Weight	0.9995 lbs [453.37 g]
Operating Life (Cold Switching)	250,000 Cycles
Operating Pressure	30 psig



Features:

- 18 to 26.5 GHz SPDT Waveguide Switch
- Optional DPDT Configuration
- WR-42 Waveguide with O-Rings
- Insertion Loss: 0.013 dB typ
- Isolation: 90 dB typ
- +12 Vdc Nominal Voltage
- Input Power Rating up to 0.8 kW CW max
- Latching Self Cut Off Actuator
- Position Indicator and Manual Override Access
- Fully Weatherized Package
- Quick Connect Circular DC Connector with Mate
- -40°C to +85°C Operating Temperature

Applications:

- Electronic Warfare
- Electronic Countermeasures
- Microwave Radio
- VSAT
- Radar
- Space Systems
- Test Instrumentation
- Research and Development

Fairview Microwave
1130 Junction Dr. #100
Allen, TX 75013
Tel: 1-800-715-4396 / (972) 649-6678
Fax: (972) 649-6689
www.fairviewmicrowave.com
sales@fairviewmicrowave.com

Configuration

Waveguide Size	WR-42
Flange Type	Square Cover
Flange Designation	UG-595/U
Body Material and Plating	Aluminum, Chem Film
Body Plating Specification	MIL-DTL-5541 Type II Class 3

Mechanical Specification Notes:

Production Burn-In IAW MIL-DTL-55041 1500 cycles

Environmental Specifications

Temperature

Operating Range	-40 to +85 deg C
Storage Range	-55 to +100 deg C

Ingress Protection (IP) Rating

IP67

Humidity

0-100%, Fully Weatherized

ESD Sensitivity

ESD Sensitive Material, Transport material in Approved ESD bags. Handle in approved ESD Workstation.

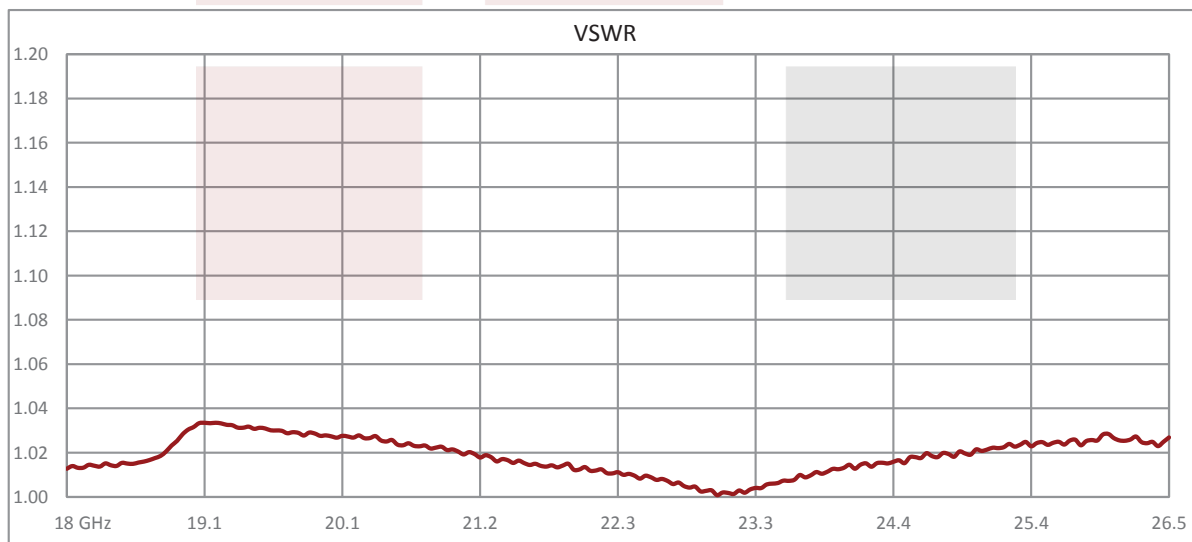


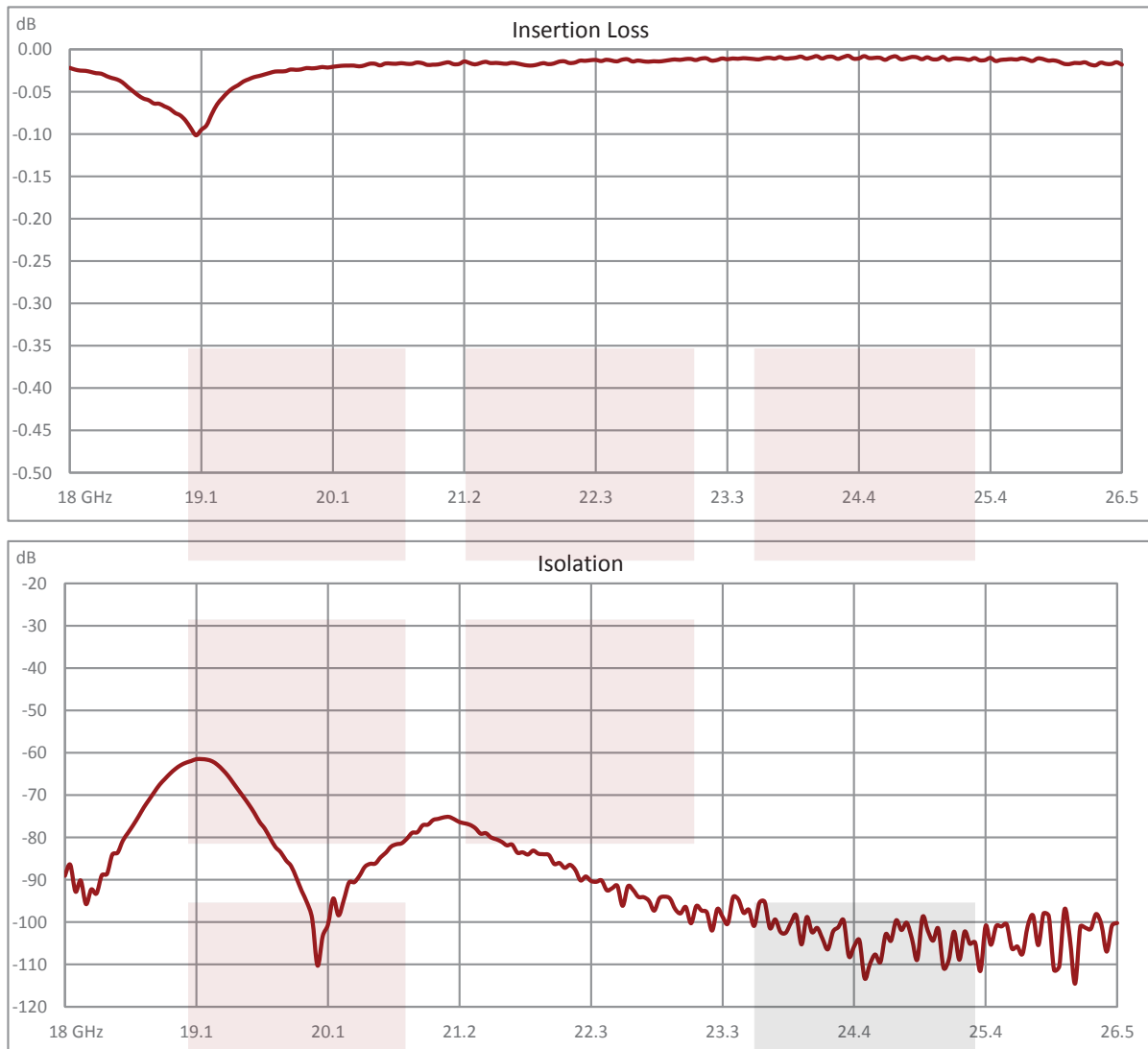
Compliance Certifications (see [product page](#) for current document)

Plotted and Other Data

Notes:

Typical Performance Data



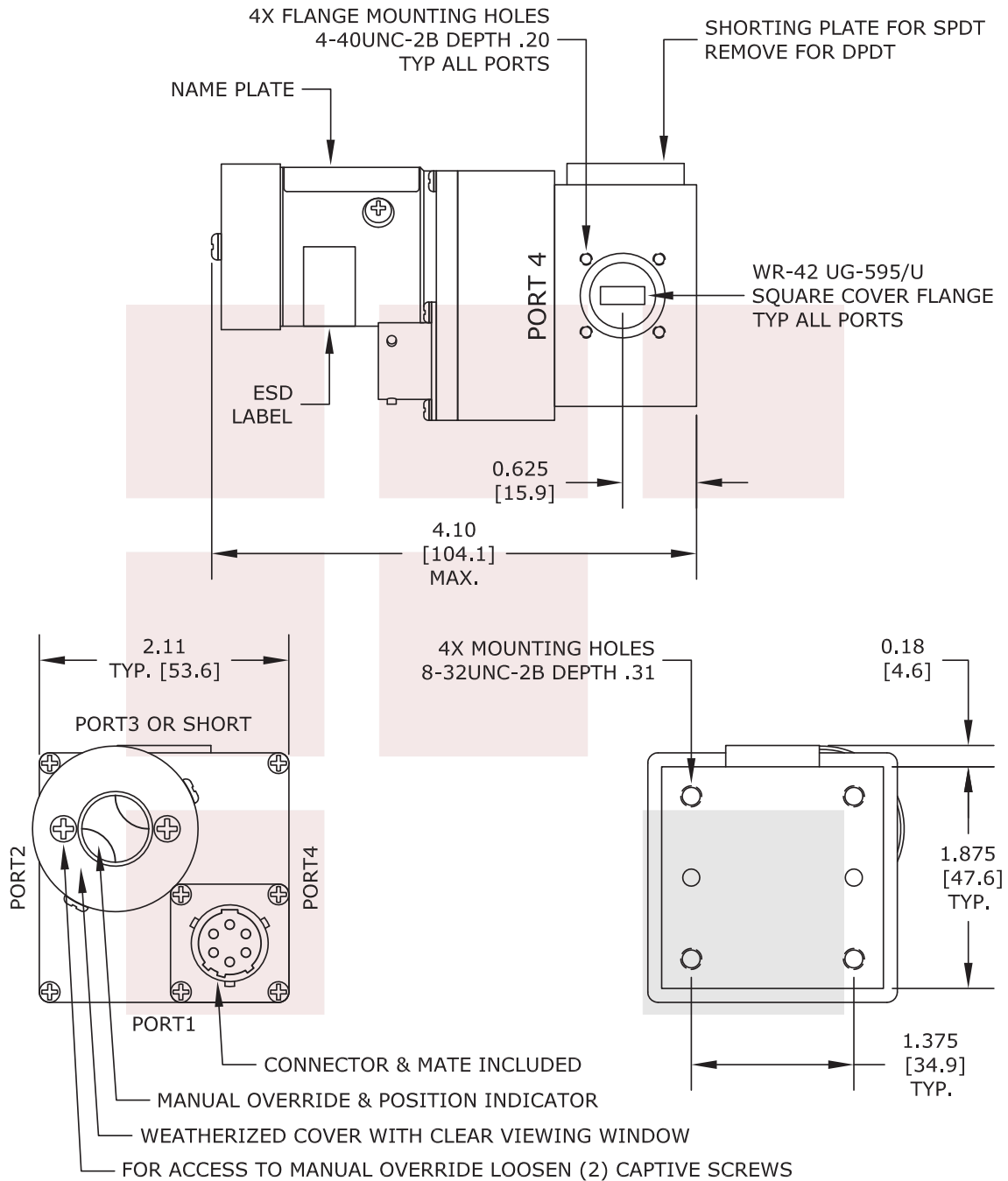


WR-42 Waveguide Electromechanical Relay Latching Switch SPDT 26.5 GHz Max Frequency, 800 Watts K Band UG-595/U Square Cover Flange from Fairview Microwave is in-stock and available to ship same-day. All of our RF/microwave products are available off-the-shelf from our ISO 9001:2008 certified facilities in Allen, Texas. Fairview Microwave is RF on-demand.

For additional information on this product, please click the following link: [WR-42 Waveguide Electromechanical Relay Latching Switch SPDT 26.5 GHz Max Frequency, 800 Watts K Band UG-595/U Square Cover Flange FMWGS6006](https://www.fairviewmicrowave.com/wr-42-waveguide-electromechanical-relay-latching-switch-spdt-26.5-ghz-fmwgs6006)

URL: <https://www.fairviewmicrowave.com/wr-42-waveguide-electromechanical-relay-latching-switch-spdt-26.5-ghz-fmwgs6006-p.aspx>

The information contained in this document is accurate to the best of our knowledge and representative of the part described herein. It may be necessary to make modifications to the part and/or the documentation of the part, in order to implement improvements. Fairview Microwave reserves the right to make such changes as required. Unless otherwise stated, all specifications are nominal. Fairview Microwave does not make any representation or warranty regarding the suitability of the part described herein for any particular purpose, and Fairview Microwave does not assume any liability arising out of the use of any part or documentation.



FAIRVIEW MICROWAVE INC.

ALLEN, TX 75013 WWW.FAIRVIEWMICROWAVE.COM

NOTES:

1. UNLESS OTHERWISE SPECIFIED ALL DIMENSIONS ARE NOMINAL.
2. ALL SPECIFICATIONS ARE SUBJECT TO CHANGE WITHOUT NOTICE AT ANY TIME.
3. DIMENSIONS ARE IN INCHES [mm].

TITLE

WR-42 Waveguide Electromechanical Relay Latching
Switch SPDT 26.5 GHz Max Frequency, 800 Watts K
Band UG-595/U Square Cover Flange

DWG NO

FMWGS6006

CAGE CODE

3FKR5

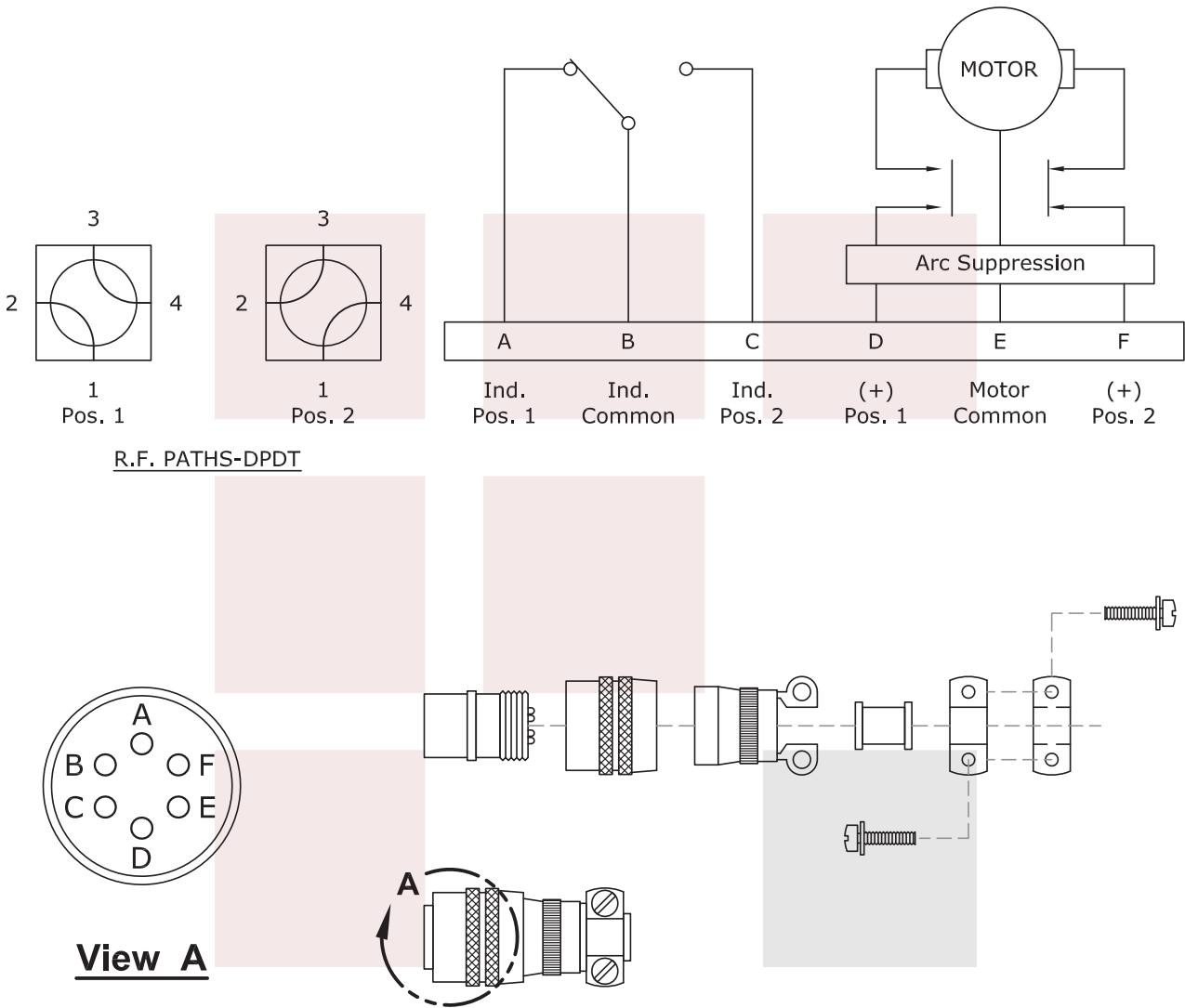
CAD FILE 012717

SHEET

SCALE N/A

SIZE A

2233



FAIRVIEW MICROWAVE INC. ALLEN, TX 75013 WWW.FAIRVIEWMICROWAVE.COM		<small>NOTES:</small> 1. UNLESS OTHERWISE SPECIFIED ALL DIMENSIONS ARE NOMINAL. 2. ALL SPECIFICATIONS ARE SUBJECT TO CHANGE WITHOUT NOTICE AT ANY TIME. 3. DIMENSIONS ARE IN INCHES [mm].			
TITLE WR-42 Waveguide Electromechanical Relay Latching Switch SPDT 26.5 GHz Max Frequency, 800 Watts K Band UG-595/U Square Cover Flange	DWG NO FMWGS6006		CAGE CODE 3FKR5		
	CAD FILE 012717	SHEET	SCALE N/A	SIZE A	2233