

## WR-187 Waveguide Shim, 1mm Aluminum CPR-187F Flange

FMW187FS1 is a WR-187 waveguide shim with operating frequency range from 3.94 GHz to 5.99 GHz. This waveguide shim is fabricated with 1 mm thick aluminum by high precision manufacturing process. FMW187FS1 can be used to bridge gaps between WR-187 waveguide components with CPR-187F flanges. Fairview Microwave offers wide selection of waveguide components with high performance available in stock and same-day shipping to customers worldwide.

### Electrical Specifications\*

Description	Min	Typ	Max	Units
Frequency Range	3.94		5.99	GHz

### Mechanical Specifications

Body Material	Aluminum
Body Finish	Chromate conversion
Length	0.039 in [0.99 mm]
Width	3.5 in [88.9 mm]
Height	2.5 in [63.5 mm]
Weight	0.11 lbs [49.9 g]

### Compliance Certifications (see [product page](#) for current document)

WR-187 Waveguide Shim, 1mm Aluminum CPR-187F Flange from Fairview Microwave is in-stock and available to ship same-day. All of our RF/microwave products are available off-the-shelf from our ISO 9001:2008 certified facilities in Lewisville, Texas. Fairview Microwave is RF on-demand.

For additional information on this product, please click the following link: [WR-187 Waveguide Shim, 1mm Aluminum CPR-187F Flange FMW187FS1](#)

URL: <https://www.fairviewmicrowave.com/wr-187-waveguide-shim-1-mm-aluminum-cpr-187f-fmw187fs1-p.aspx>

The information contained in this document is accurate to the best of our knowledge and representative of the part described herein. It may be necessary to make modifications to the part and/or the documentation of the part, in order to implement improvements. Fairview Microwave reserves the right to make such changes as required. Unless otherwise stated, all specifications are nominal. Fairview Microwave does not make any representation or warranty regarding the suitability of the part described herein for any particular purpose, and Fairview Microwave does not assume any liability arising out of the use of any part or documentation.

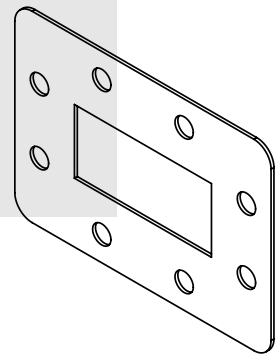
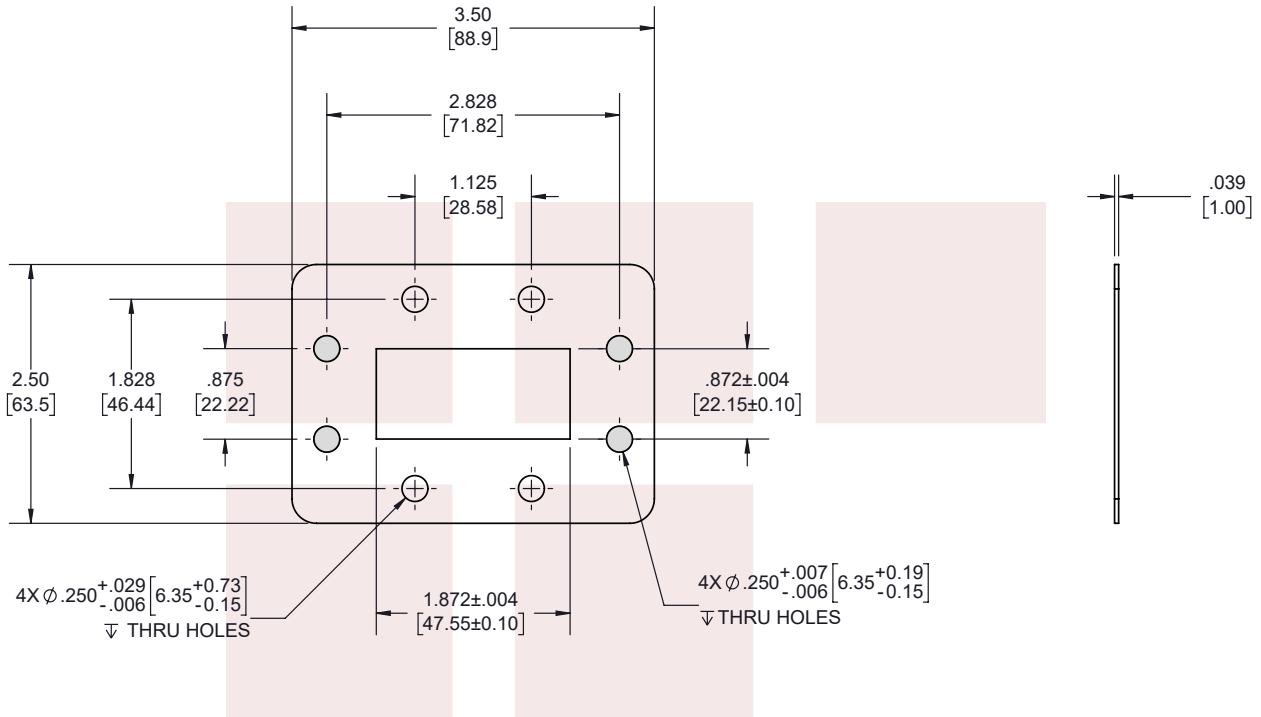


### Features:

- WR-187 Waveguide Shim
- CPR-187F Flange Configuration
- Frequency Range: 3.94 GHz to 5.99 GHz
- 1 mm Thick Aluminum Construction

Fairview Microwave  
301 Leora Ln., Suite 100  
Lewisville, TX 75056  
Tel: 1-800-715-4396 / (972) 649-6678  
Fax: (972) 649-6689  
[www.fairviewmicrowave.com](http://www.fairviewmicrowave.com)  
[sales@fairviewmicrowave.com](mailto:sales@fairviewmicrowave.com)

REVISIONS			
REV.	DESCRIPTION	DATE	APPROVED
A	INITIAL RELEASE	4/13/2022	S. PONG



THESE COMMODITIES, TECHNOLOGY OR SOFTWARE WERE EXPORTED FROM THE UNITED STATES IN ACCORDANCE WITH THE EXPORT ADMINISTRATION REGULATIONS. DIVERSION CONTRARY TO U.S. LAW PROHIBITED.

TITLE  
WR-187 Waveguide Shim, 1mm Aluminum CPR-187F Flange

UNLESS OTHERWISE SPECIFIED LEADING DIMENSIONS ARE INCHES  
DIMENSIONS IN [ ] ARE MILLIMETERS

TOLERANCES:		CABLE LENGTH (L) TOLERANCES:	
.X = ±.2 [5.08]	FRACTIONS ± 1/32	L ≤ 12 [305] = +1 [25] / -0	
.XX = ±.02 [.51]		12 [305] < L ≤ 60 [1524] = +2 [51] / -0	
.XXX = ±.005 [.13]	ANGLES ± 1°	60 [1524] < L ≤ 120 [3048] = +4 [102] / -0	
		120 [3048] < L ≤ 300 [7620] = +6 [152] / -0	
		300 [7620] < L = +5%L / -0	

THIRD-ANGLE PROJECTION  
THE INFORMATION AND DESIGN IN THIS DOCUMENT IS THE PROPERTY OF FAIRVIEW MICROWAVE CORPORATION. ALL RIGHTS RESERVED.

ALL DIMENSIONS SHOWN ARE FOR REFERENCE ONLY.					SCALE	N/A
SIZE	CAGE CODE	DRAWN BY	ITEM NO.	REV		
A	3FKR5	K.DANG	FMW187FS1	A		

T-Rev.D