

## 2 way Power Divider SMA Connectors from 1 MHz to 30 MHz Rated to 10 Watts

Fairview Microwave carries a wide selection of power dividers to fit your needs. These components are essential in many systems, allowing the combination of multiple signals or splitting of a single signal into multiple signals with equal magnitude and phase. Fairview Microwave's resistive and Wilkinson power dividers come with excellent performance featuring minimal loss, high isolation and low VSWR. They are available in both narrow and broad bandwidths with a variety of connector types such as 2.92mm, BNC, N and SMA.

The FMDV1204 is a 2-way power divider that operates from 1 to 30 MHz and can handle up to 10 Watts (CW) with 0.3 dB max insertion loss and 25 dB min isolation. The package interface uses SMA female connectors.

### Electrical Specifications

| Number of Output Ports                       |     |        | 2      |         |
|--|-----|--------|--------|---------|
| Description                                  | Min | Typ    | Max    | Units   |
| Frequency Range                              | 1   |        | 30     | MHz     |
| Impedance                                    |     | 50     |        | Ohms    |
| Input VSWR                                   |     | 1.15:1 | 1.25:1 |         |
| Output VSWR                                  |     | 1.15:1 | 1.25:1 |         |
| Insertion Loss                               |     | 0.2    | 0.3    | dB      |
| Isolation                                    | 25  | 30     |        | dB      |
| Amplitude Balance                            |     | 0.05   | 0.1    | dB      |
| Phase Balance                                |     | 0.5    | 1      | Degrees |
| Nominal Power Splitting                      |     | 3      |        | dB      |
| Input Power (CW)                             |     |        | 10     | Watts   |
| Reverse Power (CW)                           |     |        | 1      | Watt    |
| Input Power (Peak)<br>10% Duty Cycle, 1us PW |     |        | 100    | Watts   |

### Mechanical Specifications

| Size                         |                     |
|------------------------------|---------------------|
| Length                       | 1.56 in [39.62 mm]  |
| Width                        | 1.365 in [34.67 mm] |
| Height                       | 0.585 in [14.86 mm] |
| Weight                       | 0.6 lbs [272.16 g]  |
| Housing Material and Plating | Aluminum            |

| Configuration     |            |
|-------------------|------------|
| Input Connector   | SMA Female |
| Output Connectors | SMA Female |

### Environmental Specifications

| Temperature     |                   |
|-----------------|-------------------|
| Operating Range | -40 to +85 deg C  |
| Storage Range   | -50 to +105 deg C |



### Features:

- 2-Way Power Divider
- SMA Female Connectorized Design
- 1 to 30 MHz Frequency Range
- Max Power 10 Watts (CW)
- Insertion Loss < 0.3 dB
- Isolation > 25 dB

### Applications:

- Test and Measurement
- Military Communications
- Commercial Communications
- Wireless Communications
- SATCOM

Fairview Microwave  
 301 Leora Ln., Suite 100  
 Lewisville, TX 75056  
 Tel: 1-800-715-4396 / (972) 649-6678  
 Fax: (972) 649-6689  
[www.fairviewmicrowave.com](http://www.fairviewmicrowave.com)  
[sales@fairviewmicrowave.com](mailto:sales@fairviewmicrowave.com)

Humidity  
Shock  
Vibration  
Altitude

100% RH at 35°C, 95%RH at 40°C  
20G for 11msec half sine wave, 3 axis both directions  
25g RMS (15 degrees 2KHz) endurance, 1 hour per axis  
30,000 ft.

**Compliance Certifications** (see [product page](#) for current document)

**Plotted and Other Data**

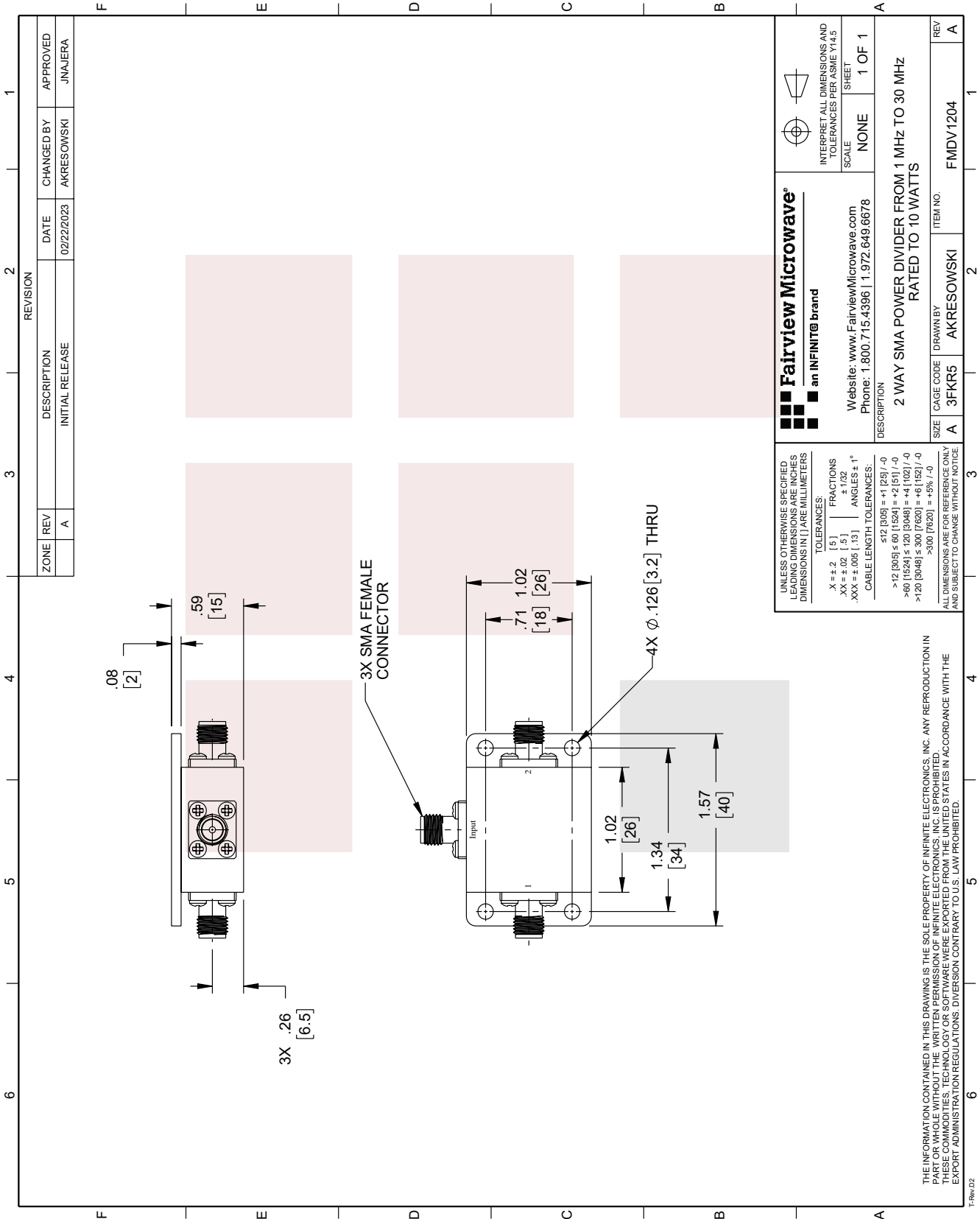
Notes:

2 way Power Divider SMA Connectors from 1 MHz to 30 MHz Rated to 10 Watts from Fairview Microwave is in-stock and available to ship same-day. All of our RF/microwave products are available off-the-shelf from our ISO 9001:2008 certified facilities in Lewisville, Texas. Fairview Microwave is RF on-demand.

For additional information on this product, please click the following link: [2 way Power Divider SMA Connectors from 1 MHz to 30 MHz Rated to 10 Watts FMDV1204](#)

URL: <https://www.fairviewmicrowave.com/2-way-power-divider-30-mhz-fmdv1204-p.aspx>

The information contained in this document is accurate to the best of our knowledge and representative of the part described herein. It may be necessary to make modifications to the part and/or the documentation of the part, in order to implement improvements. Fairview Microwave reserves the right to make such changes as required. Unless otherwise stated, all specifications are nominal. Fairview Microwave does not make any representation or warranty regarding the suitability of the part described herein for any particular purpose, and Fairview Microwave does not assume any liability arising out of the use of any part or documentation.



| REVISION |     | DATE        | CHANGED BY      | APPROVED |
|----------|-----|-------------|-----------------|----------|
| ZONE     | REV | DESCRIPTION | INITIAL RELEASE |          |
|          | A   |             |                 | JNAJERA  |

|   |                              |  |
|---|------------------------------|--|
| <br><b>Fairview Microwave<sup>®</sup></b><br>an INFINIT <sup>®</sup> brand  |                              | <br>INTERPRET ALL DIMENSIONS AND TOLERANCES PER ASME Y14.5 |
| Website: <a href="http://www.FairviewMicrowave.com">www.FairviewMicrowave.com</a><br>Phone: 1.800.715.4396   1.972.649.6678 | SCALE: NONE<br>SHEET: 1 OF 1 |  |
| DESCRIPTION:<br><b>2 WAY SMA POWER DIVIDER FROM 1 MHz TO 30 MHz</b><br><b>RATED TO 10 WATTS</b>                             |                              |  |
| SIZE: A   | CAGE CODE: 3FKR5             | ITEM NO.: FMDV1204   |
| REV: A  | REV: A                       | REV: A   |

UNLESS OTHERWISE SPECIFIED, DIMENSIONS ARE IN INCHES AND DIMENSIONS IN PARETHESISES ARE IN MILLIMETERS.

TOLERANCES:  
 .X = ±.2 [5]    FRACTIONS ±.132  
 .XX = ±.02 [.5]    ANGLES ± 1°  
 .XXX = ±.006 [.13]

CABLE LENGTH TOLERANCES:  
 ≤12 [305] = ±1 [25] / -0  
 >12 [305] ≤ 60 [1524] = +2 [51] / -0  
 >60 [1524] ≤ 120 [3048] = +4 [102] / -0  
 >120 [3048] ≤ 300 [7620] = +6 [152] / -0  
 >300 [7620] = +5% / -0

ALL DIMENSIONS ARE FOR REFERENCE ONLY AND SUBJECT TO CHANGE WITHOUT NOTICE.

THE INFORMATION CONTAINED IN THIS DRAWING IS THE SOLE PROPERTY OF INFINITE ELECTRONICS, INC. ANY REPRODUCTION IN THESE COMMODITIES, TECHNOLOGY OR SOFTWARE, WHEN EXPORTED FROM THE UNITED STATES IN ACCORDANCE WITH THE EXPORT ADMINISTRATION REGULATIONS, DIVERSION CONTRARY TO U.S. LAW PROHIBITED.