

## 2.92mm Female PCB Connector End Launch Clamp/ Solder (Captive Contact) Attachment Microstrip/ Coplanar Launch, 0.010 inch

2.92mm female connector with clamp/solder (captive contact) attachment for end launch PCB, part number FMCN1496, from Fairview Microwave is in-stock and ships same day. This 2.92mm female connector operates up to a maximum frequency of 40 GHz and offers excellent VSWR of 1.2:1.

Fairview's 2.92mm female connector FMCN1496 datasheet specifications and outline drawing are shown in this PDF below. Our extensive offering of RF, microwave and millimeter wave connectors allows designers to configure and customize their signal connections however they like. From providing an I/O for a board design to creating a custom cable assembly configuration, Fairview Microwave has a connector solution to meet your needs. Fairview Microwave also has the expertise to build your custom cable assemblies for you and ship them same-day.

### Electrical Specifications

| Description     | Min | Typ | Max   | Units |
|-----------------|-----|-----|-------|-------|
| Frequency Range | DC  |     | 40    | GHz   |
| VSWR            |     |     | 1.2:1 |       |

#### Electrical Specification Notes:

Actual VSWR performance is largely dependent on circuit board design. For optimal results, the connector and circuit launch geometry should be modeled using Electromagnetic Simulation tools.

### Mechanical Specifications

#### Size

|               |                     |
|---------------|---------------------|
| Length        | 0.561 in [14.25 mm] |
| Width/Dia.    | 0.469 in [11.91 mm] |
| Weight        | 0.01 lbs [4.54 g]   |
| Mating Cycles | 500 Cycles          |

#### Material Specifications

| Description     | Material                   | Plating |
|-----------------|----------------------------|---------|
| Contact         | Beryllium Copper           | Gold    |
| Insulation      | PTFE                       |         |
| Outer Conductor | Passivated Stainless Steel |         |
| Body            | Passivated Stainless Steel |         |

#### Mechanical Specification Notes:

Launch Pin is Gold Plated Beryllium Copper



### Configuration:

- 2.92mm Female Connector
- 50 Ohms
- Straight Body Geometry
- End Launch Interface Type
- Clamp/Solder (Captive Contact) Attachment

### Features:

- Operating Frequency of 40 GHz Max.
- Excellent VSWR of 1.2:1
- Gold Plated Beryllium Copper Contact
- Optimized for 10 mil Du5880

### Applications:

- General Purpose Test
- PCB Applications
- Signal Integrity Measurement
- Chip Evaluations
- SERDES
- End Launch Test Fixtures
- Microstrip Launches
- CPW Launches

Fairview Microwave  
301 Leora Ln., Suite 100  
Lewisville, TX 75056  
Tel: 1-800-715-4396 / (972) 649-6678  
Fax: (972) 649-6689  
[www.fairviewmicrowave.com](http://www.fairviewmicrowave.com)  
[sales@fairviewmicrowave.com](mailto:sales@fairviewmicrowave.com)

## Environmental Specifications

### Temperature

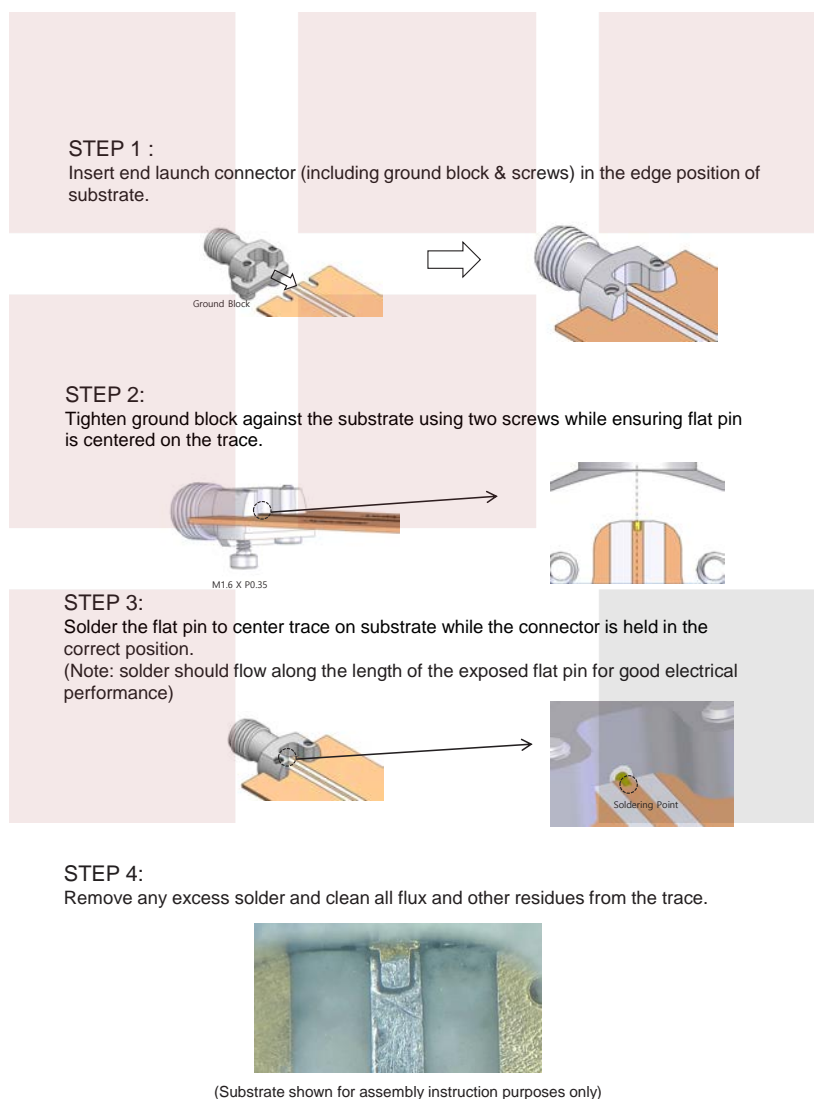
Operating Range -40 to +125 deg C

**Compliance Certifications** (see [product page](#) for current document)

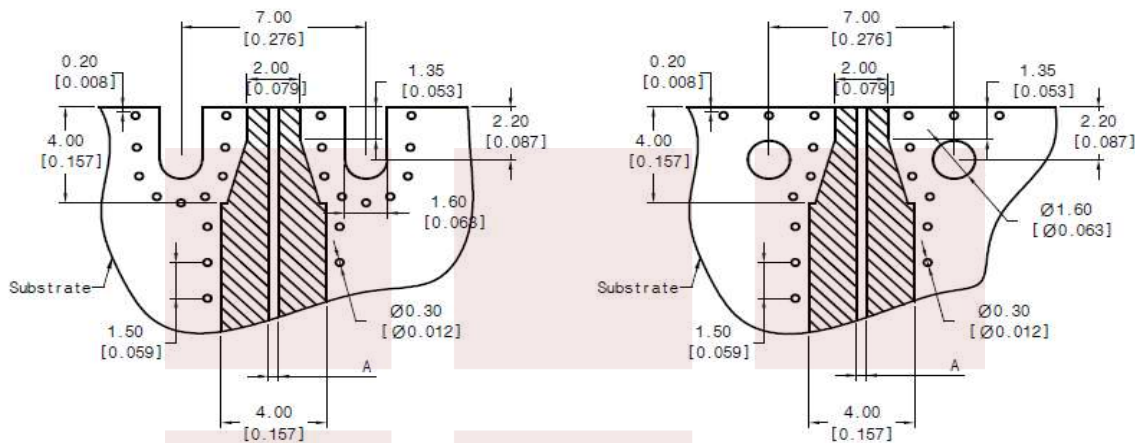
## Plotted and Other Data

Notes:

### Assembly Instruction

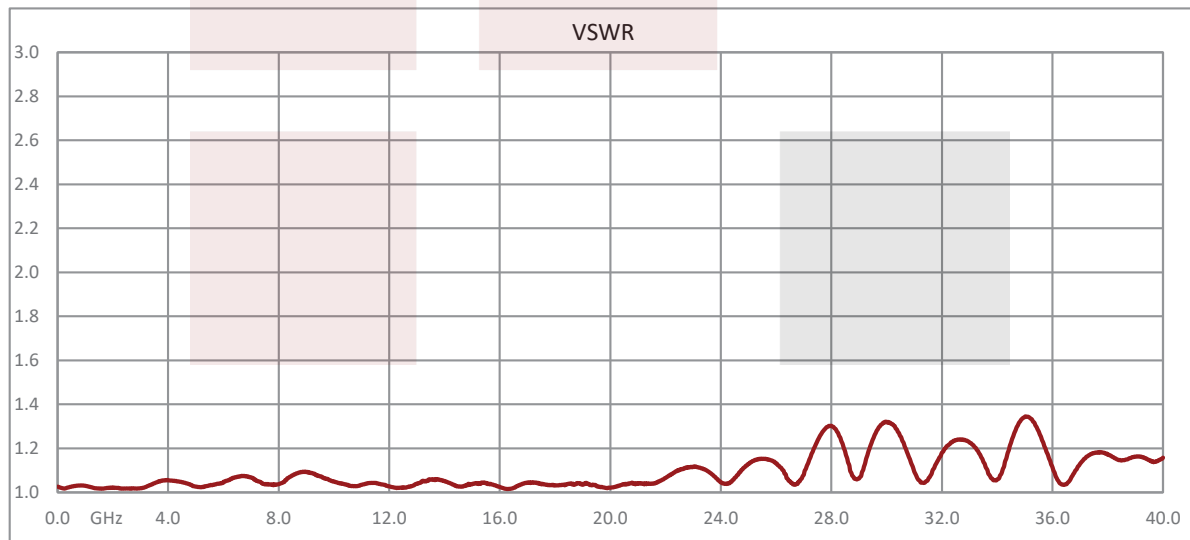


**TYPICAL PCB GEOMETRY**  
**SUBSTRATE THICKNESS: 0.010"**  
**MICROSTRIP WIDTH (A): 0.765mm**  
**SUBSTRATE MATERIAL: Du5880**

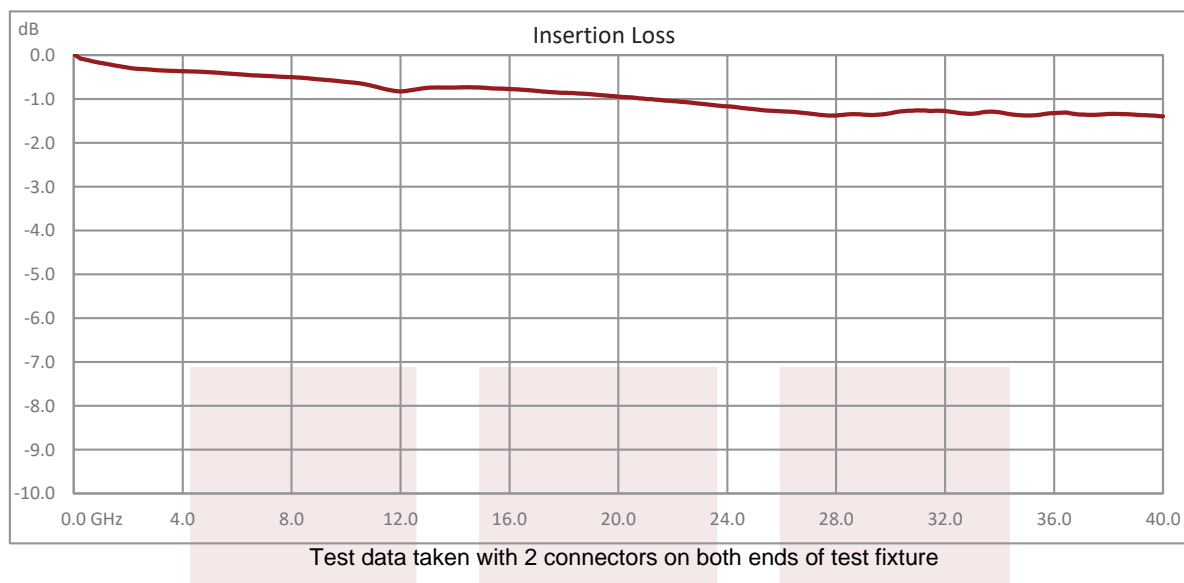


Dimensions shown in mm [inch]

**Typical Performance Data**



Test data taken with 2 connectors on both ends of test fixture

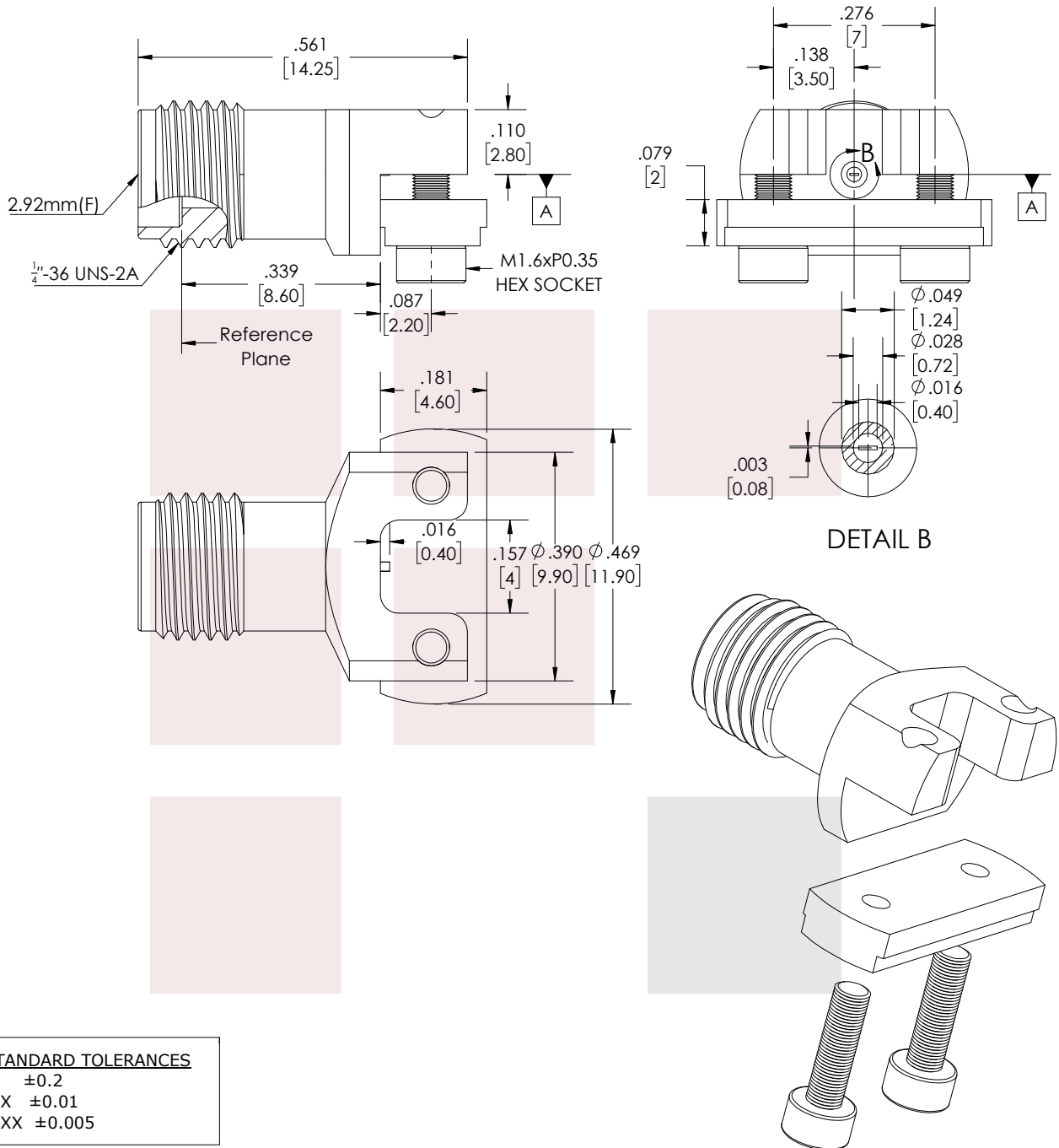


2.92mm Female PCB Connector End Launch Clamp/Solder (Captive Contact) Attachment Microstrip/Coplanar Launch, 0.010 inch from Fairview Microwave is in-stock and available to ship same-day. All of our RF/microwave products are available off-the-shelf from our ISO 9001:2008 certified facilities in Lewisville, Texas. Fairview Microwave is RF on-demand.

For additional information on this product, please click the following link: [2.92mm Female PCB Connector End Launch Clamp/Solder \(Captive Contact\) Attachment Microstrip/Coplanar Launch, 0.010 inch FMCN1496](https://www.fairviewmicrowave.com/2.92mm-female-end-launch-pcb-connector-fmcn1496-p.aspx)

URL: <https://www.fairviewmicrowave.com/2.92mm-female-end-launch-pcb-connector-fmcn1496-p.aspx>

The information contained in this document is accurate to the best of our knowledge and representative of the part described herein. It may be necessary to make modifications to the part and/or the documentation of the part, in order to implement improvements. Fairview Microwave reserves the right to make such changes as required. Unless otherwise stated, all specifications are nominal. Fairview Microwave does not make any representation or warranty regarding the suitability of the part described herein for any particular purpose, and Fairview Microwave does not assume any liability arising out of the use of any part or documentation.



**STANDARD TOLERANCES**

.X  $\pm 0.2$   
.XX  $\pm 0.01$   
.XXX  $\pm 0.005$

\*STANDARD TOLERANCES APPLY  
ONLY TO DIMENSIONS IN INCHES

**FAIRVIEW MICROWAVE INC.**

WWW.FAIRVIEWMICROWAVE.COM

**TITLE**

2.92mm Female PCB Connector End Launch Clamp/  
Solder (Captive Contact) Attachment Microstrip/  
Coplanar Launch, 0.010 inch

**NOTES:**

1. UNLESS OTHERWISE SPECIFIED ALL DIMENSIONS ARE NOMINAL.  
2. ALL SPECIFICATIONS ARE SUBJECT TO CHANGE WITHOUT NOTICE AT ANY TIME.  
3. DIMENSIONS ARE IN INCHES [mm].

**DWG NO**

FMCN1496

**CAGE CODE**

3FKR5

CAD FILE 06/04/18

SHEET

SCALE N/A

SIZE A

CN2379