

SMA Female Bulkhead Connector Clamp/Solder Attachment For LL160 Cable

SMA female bulkhead connector with clamp/solder attachment for LL160, part number FMCN1466, from Fairview Microwave is in-stock and ships same day. This SMA female connector operates up to a maximum frequency of 22 GHz and offers excellent VSWR of 1.16:1. Fairview's FMCN1466 bulkhead SMA connector enables designers to make external connections on product enclosures, and can be used in a variety of other rack mount and panel mount applications.

Fairview's SMA female bulkhead connector FMCN1466 datasheet specifications and outline drawing are shown in this PDF below. Our extensive offering of RF, microwave and millimeter wave connectors allows designers to configure and customize their signal connections however they like. From providing an I/O for a board design to creating a custom cable assembly configuration, Fairview Microwave has a connector solution to meet your needs. Fairview Microwave also has the expertise to build your custom cable assemblies for you and ship them same-day.

Electrical Specifications

Description	Min	Typ	Max	Units
Frequency Range	DC		22	GHz
VSWR			1.16:1	
DWV (AC)			1,000	Vrms

Performance by Frequency

Description	F1	F2	F3	F4	F5	Units
Freq. Range	DC to 18	18 to 22				GHz
VSWR, Max	1.14:1	1.16:1				

Electrical Specification Notes:
Insertion Loss is $0.04 * \sqrt{\text{Freq GHz}}$

Mechanical Specifications

Weight 0.352 lbs [159.66 g]

Material Specifications

Description	Material	Plating
Contact	Beryllium Copper	Gold ASTM-B488
Insulation	PTFE	
Outer Conductor	Passivated Stainless Steel	
Body	Passivated Stainless Steel	
Coupling Nut	Passivated Stainless Steel	
Crimp Sleeve	Brass	Gold ASTM-B488
O-Ring	Silicone Rubber	



Configuration:

- SMA Female Connector
- 50 Ohms
- Straight Body Geometry
- LL160 Interface Type
- Clamp/Solder Attachment
- Bulkhead

Features:

- Operating Frequency of 22 GHz Max.
- Excellent VSWR of 1.16:1
- Gold Plated Beryllium Copper Contact
- Contact plating according to ASTM-B488

Applications:

- General Purpose Test
- Rack and Panel Mount Applications
- Custom Cable Assemblies

Fairview Microwave
301 Leora Ln., Suite 100
Lewisville, TX 75056
Tel: 1-800-715-4396 / (972) 649-6678
Fax: (972) 649-6689
www.fairviewmicrowave.com
sales@fairviewmicrowave.com

Environmental Specifications

Temperature

Operating Range -65 to +165 deg C

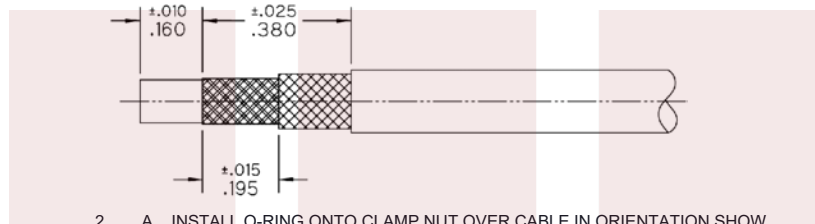
Compliance Certifications (see [product page](#) for current document)

Plotted and Other Data

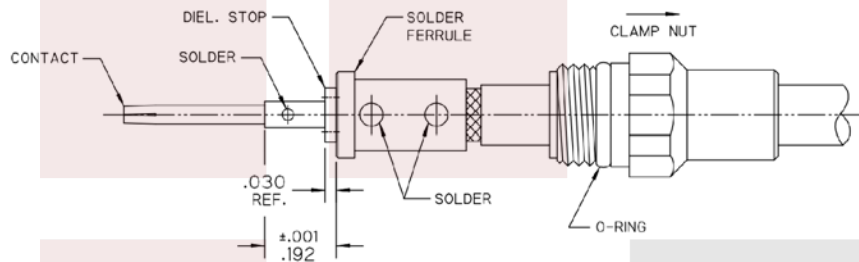
Notes:

Assembly Instruction

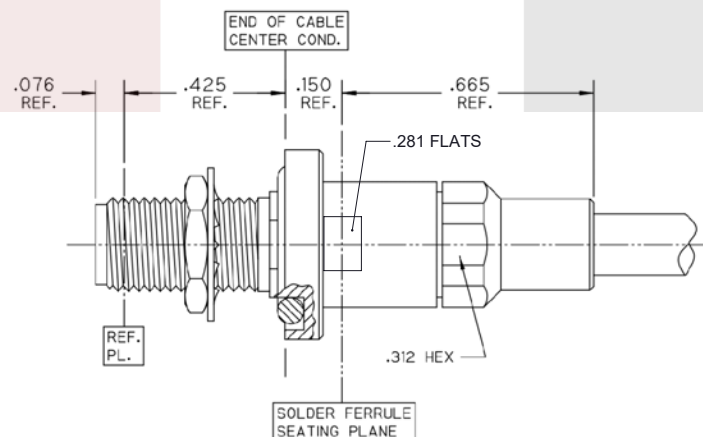
1. TRIM CABLE TO EXPOSE DIELECTRIC AND BRAIDS AS SHOWN.



2. A. INSTALL O-RING ONTO CLAMP NUT OVER CABLE IN ORIENTATION SHOWN.
B. INSERT CABLE INTO SOLDER FERRULE UNTIL INNER BRAID IS SEATED THEN SOLDER CABLE BRAIDS TO FERRULE WHERE SHOWN.
C. TRIM CABLE DIELECTRIC FLUSH WITH FACE OF SOLDER FERRULE.
D. SLIDE DIELECTRIC STOP OVER CABLE CENTER CONDUCTOR AND SOLDER CONTACT FLUSH TO STOP TO DIMENSION SHOWN.



3. A. INSERT INSULATOR, FWD ULTEM BEAD AND BUSHING INTO CONNECTOR BODY IN ORIENTATION SHOWN.
B. INSERT CABLE/ CONTACT/ SUB-ASSEMBLY UNTIL SEATED AND TIGHTEN CLAMP NUT TO 25-35 IN-LBS.



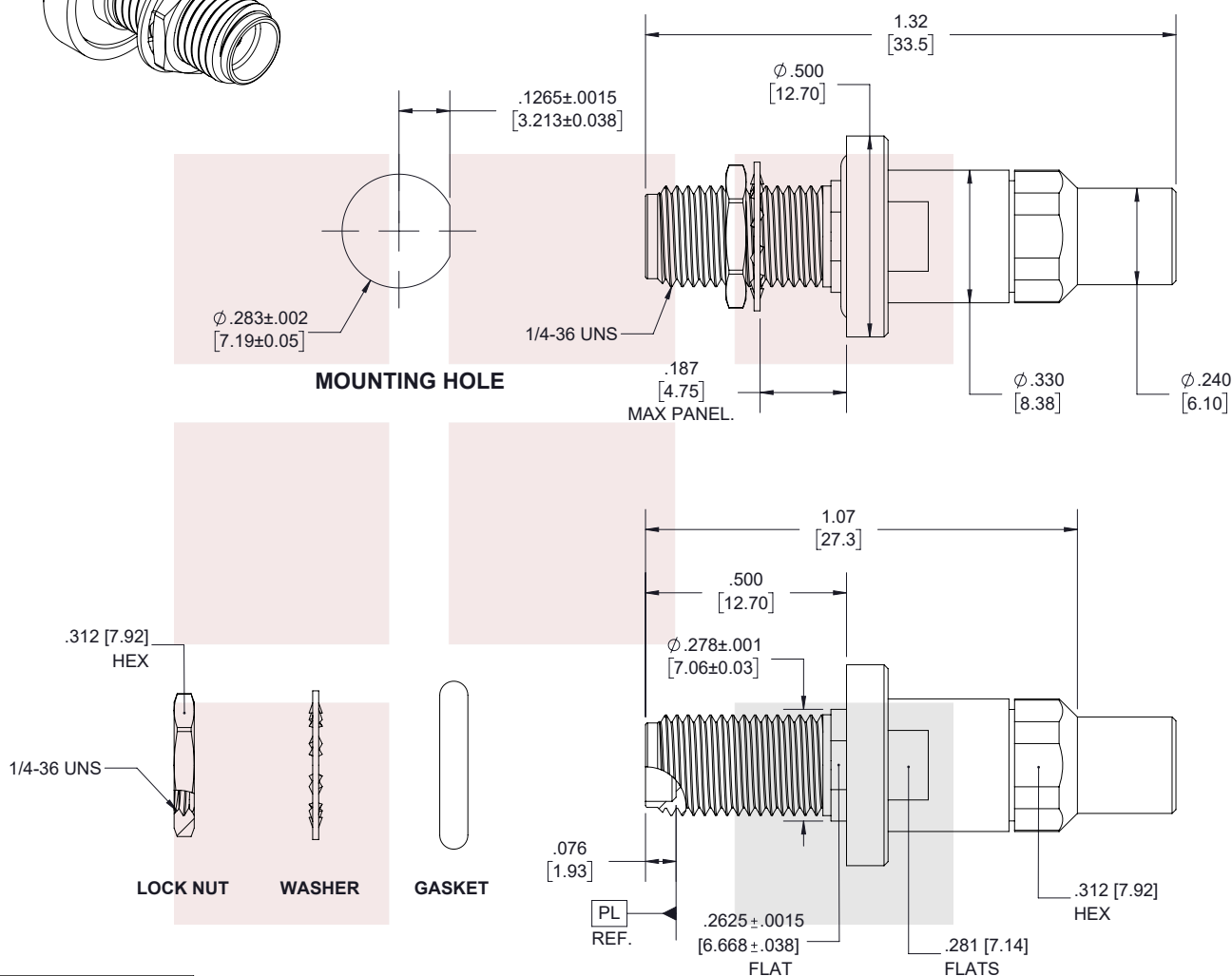
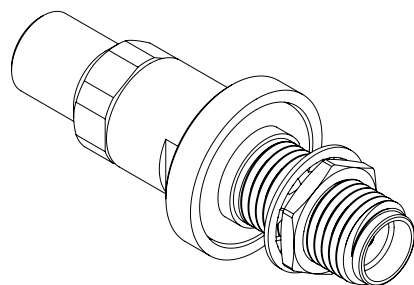
SMA Female Bulkhead Connector Clamp/Solder Attachment For LL160 Cable from Fairview Microwave is in-stock and available to ship same-day. All of our RF/microwave products are available off-the-shelf from our ISO 9001:2008 certified facilities in Allen, Texas. Fairview Microwave is RF on-demand.

For additional information on this product, please click the following link: [SMA Female Bulkhead Connector Clamp/Solder Attachment For LL160 Cable FMCN1466](#)

URL: <https://www.fairviewmicrowave.com/sma-female-ll160-connector-fmcn1466-p.aspx>

The information contained in this document is accurate to the best of our knowledge and representative of the part described herein. It may be necessary to make modifications to the part and/or the documentation of the part, in order to implement improvements. Fairview Microwave reserves the right to make such changes as required. Unless otherwise stated, all specifications are nominal. Fairview Microwave does not make any representation or warranty regarding the suitability of the part described herein for any particular purpose, and Fairview Microwave does not assume any liability arising out of the use of any part or documentation.





.X	±0.2
.XX	±0.01
.XXX	±0.005

Fairview Microwave
RF COMPONENTS ON DEMAND. *Done!*

NOTES:

- NOTES:
1. UNLESS OTHERWISE SPECIFIED ALL DIMENSIONS ARE NOMINAL.
2. ALL SPECIFICATIONS ARE SUBJECT TO CHANGE WITHOUT NOTICE AT ANY TIME.
3. DIMENSIONS ARE IN INCHES [mm].

TITLE SMA Female Bulkhead Connector Clamp/Solder Attachment For LL160 Cable	DWG NO FMCN1466				CAGE CODE 3FKR5			
	CAD FILE	04/09/18	SHEET	1 OF 1	SCALE	N/A	SIZE	A