

SMA Female Precision Connector Clamp/Solder Attachment for LL142 Cable

SMA female precision connector with clamp/solder attachment for LL142, part number FMCN1080, from Fairview Microwave is in-stock and ships same day. This SMA female connector operates up to a maximum frequency of 26.5 GHz and offers excellent VSWR of 1.18:1.

Fairview's SMA female connector FMCN1080 datasheet specifications and outline drawing are shown in this PDF below. Our extensive offering of RF, microwave and millimeter wave connectors allows designers to configure and customize their signal connections however they like. From providing an I/O for a board design to creating a custom cable assembly configuration, Fairview Microwave has a connector solution to meet your needs. Fairview Microwave also has the expertise to build your custom cable assemblies for you and ship them same-day.

Electrical Specifications

Description	Min	Typ	Max	Units
Frequency Range	DC		26.5	GHz
VSWR			1.18:1	
Insertion Loss			0.26	dB
Operating Voltage (AC)			335	Vrms
DWV (AC)			1,000	Vrms
High Potential Voltage 5 to 7.5 MHz			670	Vrms
Corona Discharge at 70,000 ft			250	Vrms
Insulation Resistance	5,000			MOhms
RF Leakage	90			dB

Performance by Frequency

Description	F1	F2	F3	F4	F5	Units
Freq. Range	DC to 18	18 to 22	22 to 26.5			GHz
VSWR, Max	1.14:1	1.16:1	1.18:1			

Electrical Specification Notes:
Insertion loss: $0.05 \times \sqrt{f(\text{GHz})}$ dB max.

Mechanical Specifications

Size	
Length	1.26 in [32 mm]
Width/Dia.	0.37 in [9.40 mm]
Weight	0.0205 lbs [9.3 g]



Configuration:

- SMA Female Connector
- 50 Ohms
- Straight Body Geometry
- LL142 Interface Type
- Clamp/Solder Attachment
- Precision Design

Features:

- Operating Frequency of 26.5 GHz Max.
- Excellent VSWR of 1.18:1
- Gold over Nickel Plated Beryllium Copper Contact
- Contact plating according to ASTM-B488, 50µ in. minimum

Applications:

- General Purpose Test
- Precision Test & Measurement
- Custom Cable Assemblies

Fairview Microwave
301 Leora Ln., Suite 100
Lewisville, TX 75056
Tel: 1-800-715-4396 / (972) 649-6678
Fax: (972) 649-6689
www.fairviewmicrowave.com
sales@fairviewmicrowave.com

Material Specifications

Description	Material	Plating
Contact	Beryllium Copper	Gold over Nickel ASTM-B488, 50μ in. minimum
Insulation	PTFE	
Outer Conductor	Passivated Stainless Steel	SAE-AMS-2700
Body	Passivated Stainless Steel	SAE-AMS-2700

Environmental Specifications

Temperature

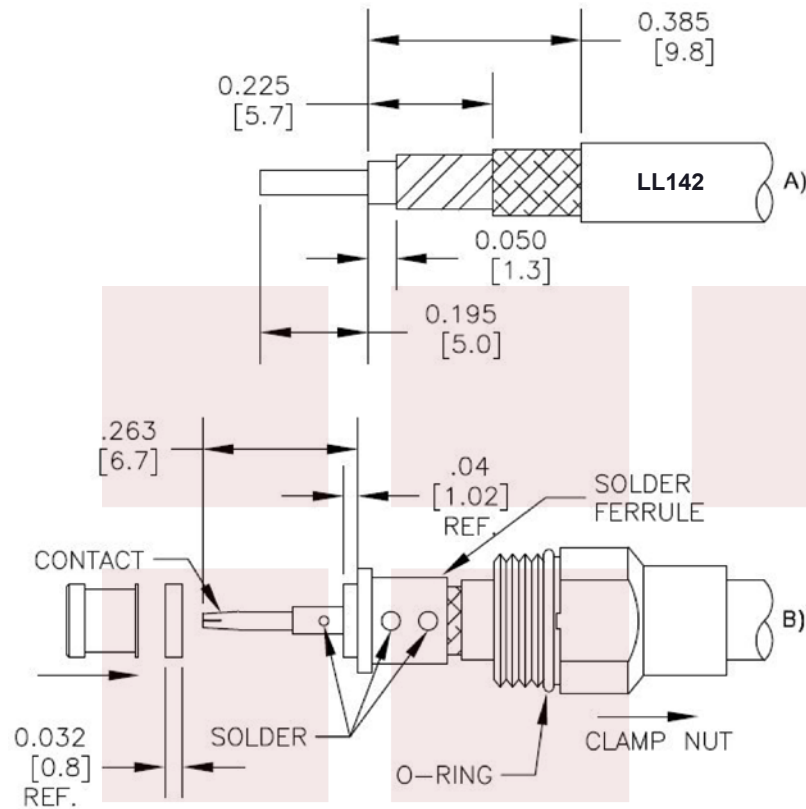
Operating Range -65 to +165 deg C

Compliance Certifications (see product page for current document)

Plotted and Other Data

Notes:

Assembly Instruction



STRIPPING DIMENSIONS

ASSEMBLY PROCEDURES

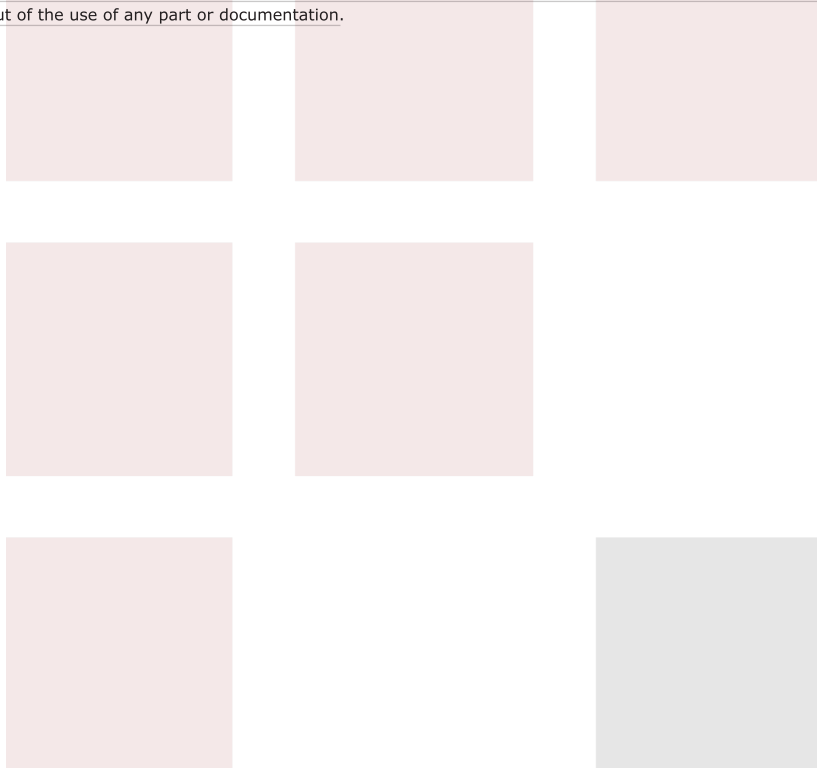
1. TRIM CABLE AS SHOWN IN (A)
2. SLIDE CLAMP NUT OVER CABLE AS SHOWN. SOLDER CABLE TO SOLDER FERRULE WITH DIELECTRIC FLUSH WITH FACE OF FERRULE. SLIDE DIELECTRIC STO (Ø.200 OD) OVER CABLE CENTER CONDUCTOR AND SOLDER CONTACT FLUSH TO STOP TO DIMENSION SHOWN. SLIDE FORWARD INSULATOR & DIELECTRIC BEAD (Ø 0.173 OD) ONTO CONTACT.
3. SCREW ASSEMBLY INTO BODY & TIGHTEN NUT.

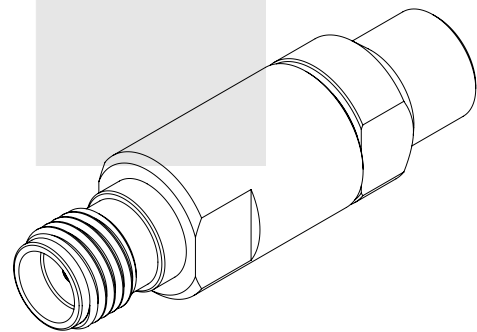
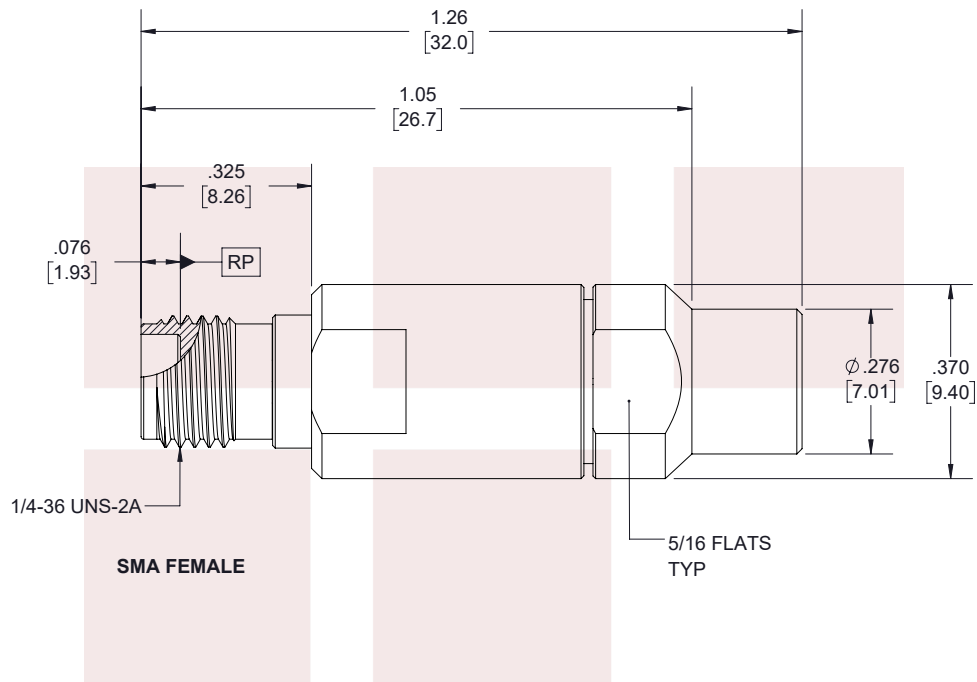
SMA Female Precision Connector Clamp/Solder Attachment for LL142 Cable from Fairview Microwave is in-stock and available to ship same-day. All of our RF/microwave products are available off-the-shelf from our ISO 9001:2008 certified facilities in Allen, Texas. Fairview Microwave is RF on-demand.

For additional information on this product, please click the following link: [SMA Female Precision Connector Clamp/Solder Attachment for LL142 Cable FMCN1080](#)

URL: <https://www.fairviewmicrowave.com/sma-female-ll142-connector-fmcn1080-p.aspx>

The information contained in this document is accurate to the best of our knowledge and representative of the part described herein. It may be necessary to make modifications to the part and/or the documentation of the part, in order to implement improvements. Fairview Microwave reserves the right to make such changes as required. Unless otherwise stated, all specifications are nominal. Fairview Microwave does not make any representation or warranty regarding the suitability of the part described herein for any particular purpose, and Fairview Microwave does not assume any liability arising out of the use of any part or documentation.





STANDARD TOLERANCES

.X ±0.2
.XX ±0.01
.XXX ±0.005

*STANDARD TOLERANCES APPLY
ONLY TO DIMENSIONS IN INCHES

NOTES:
1. UNLESS OTHERWISE SPECIFIED ALL DIMENSIONS ARE NOMINAL.
2. ALL SPECIFICATIONS ARE SUBJECT TO CHANGE WITHOUT NOTICE AT ANY TIME.
3. DIMENSIONS ARE IN INCHES [mm].

TITLE
SMA Female Precision Connector Clamp/Solder
Attachment for LL142 Cable

DWG NO FMCN1080		CAGE CODE 3FKR5	
CAD FILE	06/11/19	SHEET	1 OF 2
SCALE	N/A	SIZE	A
			7361