

## Low Loss N Male to N Female Bulkhead Cable TCOM-240 Coax with Times Microwave Components

The type N male to type N female bulkhead cable using TCOM-240 coax, part number FMCA3279, from Fairview Microwave is in-stock and ships same day. This Fairview type N to type N cable assembly has a male to female gender configuration with 50 ohm flexible TCOM-240 coax. Fairview Microwave's flexible RF cable assemblies are ideal for applications where tight bends and continual flexure are required. The FMCA3279 type N male to type N female cable assembly operates to 6 GHz. Our RF cable assembly with type N bulkhead interface allows designers to create external connections on their product enclosures, and can be used in a variety of other rack mount and panel mount applications. The double shielding of this Fairview cable assembly provides excellent shielding effectiveness.

Custom versions of most RF cable assemblies can be built and shipped same day. Custom cable assembly lengths can be obtained by specifying the desired length on the web site at time of order or by contacting a sales representative. Other RF cable assembly value added services including connector orientation or clocking, heat shrink booting and labeling are also available. RF testing can also be performed to document the electrical performance of your cable assembly.

### Electrical Specifications

Description	Min	Typ	Max	Units
Frequency Range	DC		6	GHz
VSWR			1.4:1	

### Performance by Frequency

Description	F1	F2	F3	F4	F5	Units
Frequency	0.25	0.5	1	2.5	6	GHz
Insertion Loss (Typ.)	0.036	0.052	0.075	0.123	0.197	dB/ft
	0.12	0.17	0.25	0.4	0.65	dB/m

#### Electrical Specification Notes:

Insertion Loss does not include the loss of the connectors. Insertion Loss is estimated as  $0.1 \cdot \sqrt{\text{FGHz}}$  dB for the N Male connector and 0.28 dB for the N female connector

### Mechanical Specifications

#### Cable Assembly

Weight 0.201 lbs [91.17 g]

#### Cable

Cable Type TCOM-240  
 Impedance 50 Ohms  
 Inner Conductor Type Solid  
 Inner Conductor Material and Plating Copper  
 Dielectric Type PE (F)  
 Number of Shields 2  
 Shield Layer 1 Silver Plated Copper Braid  
 Shield Layer 2 Tinned Copper Braid  
 Jacket Material PE, Black  
 Jacket Diameter 0.24 in [6.1 mm]



### Configuration:

- N Male
- N Female Bulkhead
- TCOM-240

### Features:

- Max Frequency 6 GHz
- Double Shielded
- PE Jacket
- 500 Mating Cycles

### Applications:

- General Purpose
- Laboratory Use

Fairview Microwave  
 301 Leora Ln., Suite 100  
 Lewisville, TX 75056  
 Tel: 1-800-715-4396 / (972) 649-6678  
 Fax: (972) 649-6689  
[www.fairviewmicrowave.com](http://www.fairviewmicrowave.com)  
[sales@fairviewmicrowave.com](mailto:sales@fairviewmicrowave.com)

## Connectors

Description	Connector 1	Connector 2
Type	N Male Threaded	N Female Threaded
Mount Method		Bulkhead
Specification	MIL-STD-348	MIL-STD-348
Impedance	50 Ohms	50 Ohms
Mating Cycles	500	500
Contact Material & Plating	Beryllium Copper, Gold	Beryllium Copper, Gold
Contact Plating Spec.	50 µin minimum	50 µin minimum
Dielectric Type	Teflon	PTFE
Outer Cond Material & Plating		Brass, Tri-Metal
Outer Cond Plating Spec.		80 µin minimum
Body Material & Plating	Brass, Tri-Metal	Brass, Tri-Metal
Body Plating Spec.	80 µin minimum	
Coupling Nut Material & Plating	Brass, Tri-Metal	
Coupling Nut Plating Spec.	80 µin minimum	

**Compliance Certifications** (see [product page](#) for current document)

## Plotted and Other Data

Notes:

## How to Order

Part Number Configuration:

**FMCA3279 - xx uu**

cm = Centimeters  
 <blank> = Inches  
 Length

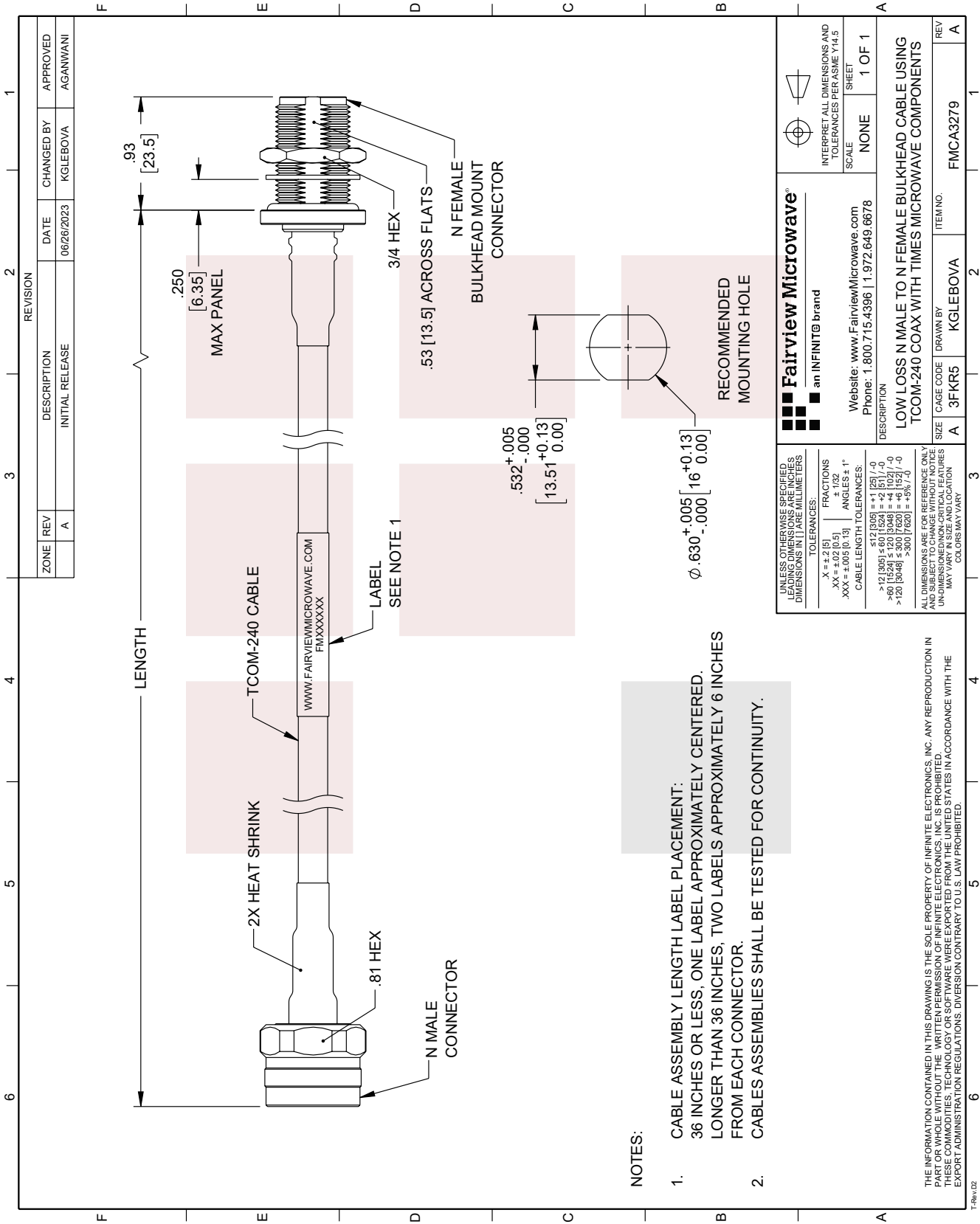
Example: FMCA3279-12 = 12 inches long cable  
 FMCA3279-100cm = 100 cm long cable

Low Loss N Male to N Female Bulkhead Cable TCOM-240 Coax with Times Microwave Components from Fairview Microwave has same day shipment for domestic and International orders. Our RF, microwave and millimeter wave products maintain a 99% availability and are part of the broadest selection in the industry.

Click the following link to obtain additional part information: [Low Loss N Male to N Female Bulkhead Cable TCOM-240 Coax with Times Microwave Components FMCA3279](#)

URL: <https://www.fairviewmicrowave.com/low-loss-n-male-to-n-female-bulkhead-cable-tcom-240-coax-with-times-microwave-components-fmca3279-p.aspx>

The information contained in this document is accurate to the best of our knowledge and representative of the part described herein. It may be necessary to make modifications to the part and/or the documentation of the part, in order to implement improvements. Fairview Microwave reserves the right to make such changes as required. Unless otherwise stated, all specifications are nominal. Fairview Microwave does not make any representation or warranty regarding the suitability of the part described herein for any particular purpose, and Fairview Microwave does not assume any liability arising out of the use of any part or documentation.



LENGTH

250 [6.35]

93 [23.5]

MAX PANEL

3/4 HEX

N FEMALE BULKHEAD MOUNT CONNECTOR

.53 [13.5] ACROSS FLATS

TCOM-240 CABLE

WWW.FAIRVIEWMICROWAVE.COM FMXXXXXX

2X HEAT SHRINK

.81 HEX

N MALE CONNECTOR

RECOMMENDED MOUNTING HOLE

Ø .630 <sup>+0.005</sup> <sub>-.000</sub> [16 <sup>+0.13</sup> <sub>0.00</sub>]

.532 <sup>+0.005</sup> <sub>-.000</sub> [13.51 <sup>+0.13</sup> <sub>0.00</sub>]

SEE NOTE 1

NOTES:

1. CABLE ASSEMBLY LENGTH LABEL PLACEMENT:  
36 INCHES OR LESS, ONE LABEL APPROXIMATELY CENTERED.  
LONGER THAN 36 INCHES, TWO LABELS APPROXIMATELY 6 INCHES FROM EACH CONNECTOR.

2. CABLES ASSEMBLIES SHALL BE TESTED FOR CONTINUITY.

Fairview Microwave®

an INFINIT® brand

Website: [www.FairviewMicrowave.com](http://www.FairviewMicrowave.com)

Phone: 1.800.715.4396 | 1.972.649.6678

INTERPRET ALL DIMENSIONS AND TOLERANCES PER ASME Y14.5

SCALE

SHEET

1 OF 1

DESCRIPTION

LOW LOSS N MALE TO N FEMALE BULKHEAD CABLE USING TCOM-240 COAX WITH TIMES MICROWAVE COMPONENTS

UNLESS OTHERWISE SPECIFIED, LEADING DIMENSIONS ARE IN INCHES, DIMENSIONS IN [ ] ARE MILLIMETERS

TOLERANCES:

X = ±.2 [5]

XX = ±.02 [0.5]

XXX = ±.005 [0.13]

FRACTIONS

± 1/32

ANGLES ± 1°

CABLE LENGTH TOLERANCES:

>12 [305] ≤ 60 [1524] = ±.01 [.25] / -0

>60 [1524] ≤ 300 [7620] = ±.02 [.51] / -0

>300 [7620] ≤ 600 [15240] = ±.03 [.76] / -0

>600 [15240] ≤ 3000 [76200] = ±.05 [1.27] / -0

>3000 [76200] = ±.08 [2.03] / -0

ALL DIMENSIONS ARE FOR REFERENCE ONLY AND SUBJECT TO CHANGE WITHOUT NOTICE

UN-DIMENSIONED CRITICAL FEATURES MAY VARY

COLORS MAY VARY

SIZE

CAGE CODE

DRAWN BY

ITEM NO.

REV

A

3FKR5

KGLEBOVA

FMCA3279

A

THE INFORMATION CONTAINED IN THIS DRAWING IS THE SOLE PROPERTY OF INFINITE ELECTRONICS, INC. ANY REPRODUCTION IN ANY FORM OR BY ANY MEANS, WITHOUT PERMISSION IN WRITING FROM INFINITE ELECTRONICS, INC. IS PROHIBITED. THESE COMMODITIES, TECHNOLOGY OR SOFTWARE WERE EXPORTED FROM THE UNITED STATES IN ACCORDANCE WITH THE EXPORT ADMINISTRATION REGULATIONS. DIVERSION CONTRARY TO U.S. LAW PROHIBITED.

T-Rev.02