

1 Watt P1dB, 4 GHz to 6 GHz, Medium Power GaAs Amplifier, 30 dB Gain, 42 dBm IP3 and SMA

The PE15A4078 is a 1 Watt coaxial packaged power amplifier operating across a frequency from 4 GHz to 6 GHz. Impressive typical performance includes 30 dB small signal gain, 8 dB noise figure, +31 dBm P1dB, and an output 3rd order intercept point of +42 dBm. Maximum RF input power is +10 dBm. This exceptional technical performance is achieved through the use of a hybrid MIC design and advanced GaAs devices. The amplifier can operate across a DC voltage range from +8.5V to +9.5V (+9V nominal) with a DC current of 750 mA (no RF input) and 850 mA (@Pout = +30 dBm). A heatsink is required to ensure optimum thermal dissipation. The operational temperature range is -40°C to +85°C. The rugged and compact package supports SMA female connectors and RFI and Ground pins. And for highly reliable operation, the model is guaranteed to meet environmental test conditions for Humidity, Shock, Vibration, and Altitude.

Electrical Specifications

(TA = +25°C, DC Voltage = +9Volts, DC Current = 850mA)

Description	Min	Typ	Max	Unit
Frequency Range	4		6	GHz
Small Signal Gain	27	30		dB
Gain Flatness		±1.2	±1.7	dB
Input Power (CW)			+10	dBm
Output Power (1dB Compression Point) +30		+31		dBm
Output 3rd Intercept Point	+41	+42		dBm
Reverse Isolation	-40	-50		dB
Noise Figure		8	9	dB
Impedance (Input)		50		Ohms
Impedance (Output)		50		Ohms
Input VSWR	1.8:1	2.2:1		
Operating DC Voltage	+8.5	+9	+9.5	Volts
Operating DC Current*		850	1.05	mA
Quiescent Current (No Input)		750	850	mA

*@ Pout = +30 dBm

Electrical Specification Notes:

Warning: Must Use Heat Sink if Case Temperature Exceeds +50oC

Absolute Maximum Rating

Parameter	Absolute Maximum
RF Input Power	+10dBm
Supply Voltage	+12V
Operating Temperature	-40 °C to +85 °C
Storage Temperature	-55 °C to +125 °C

Mechanical Specifications

Size	
Length	1.79 in [45.47 mm]
Width	1.1 in [27.94 mm]
Height	0.45 in [11.43 mm]
Weight	0.85 lbs [385.55 g]



Features:

- 1 Watt Power Amplifier
- 4 GHz to 6 GHz
- Small Signal Gain 30 dB typ
- 8 dB Noise Figure
- Output P1dB +31 dBm, Output IP3 +42 dBm
- Max RF Input Power +10 dBm
- Heatsink Required
- DC Voltage +9Vdc
- DC Current 850 mA
- Operational Temperature Range -40°C to +85°C
- SMA Female Connectors
- 50 Ohm Design
- Rugged Design meets MIL-STD-202 Test Conditions

Applications:

- Aerospace & Defense
- Test & Measurement
- Microwave Radio Systems
- Military & Commercial Communication Systems
- Research & Development
- SATCOM
- Wireless Communications

Fairview Microwave
 301 Leora Ln., Suite 100
 Lewisville, TX 75056
 Tel: 1-800-715-4396 / (972) 649-6678
 Fax: (972) 649-6689
www.fairviewmicrowave.com
sales@fairviewmicrowave.com

Input Connector
Output Connector

SMA Female
SMA Female

Environmental Specifications

Temperature

Operating Range -40 to +85 deg C
Storage Range -55 to +105 deg C

Humidity MIL-STD-202, Method 103B, Condition B
Shock MIL-STD-202F, Method 213B, Condition B
Vibration MIL-STD-202F, Method 204D, Condition B
Altitude MIL-STD-202F, Method 105C, Condition B

Compliance Certifications (see [product page](#) for current document)

Plotted and Other Data

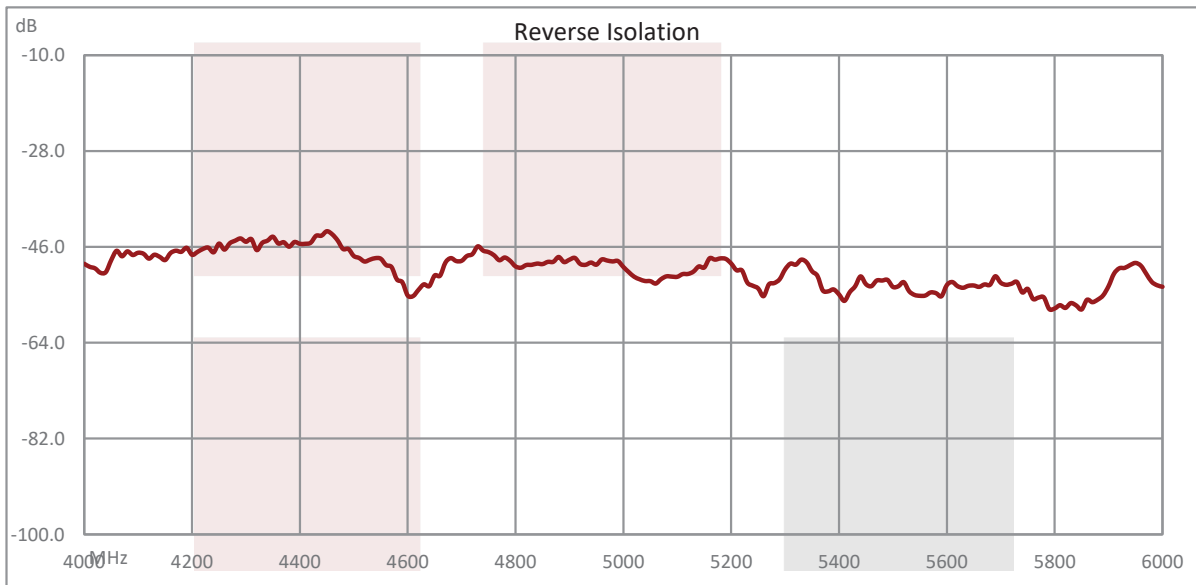
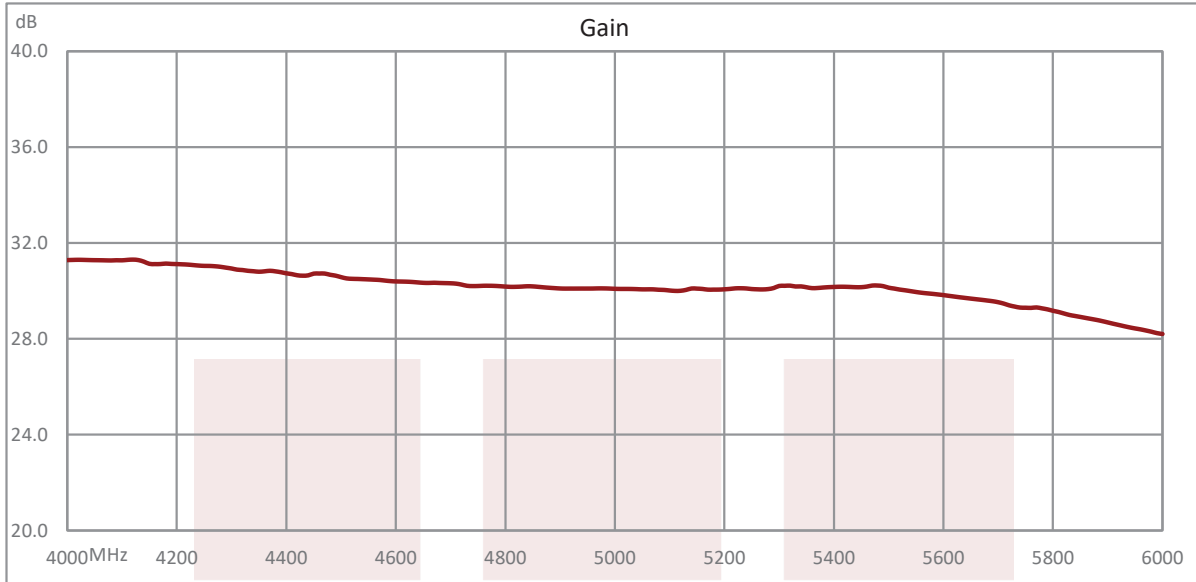
Notes:
• Values at 25 °C, sea level

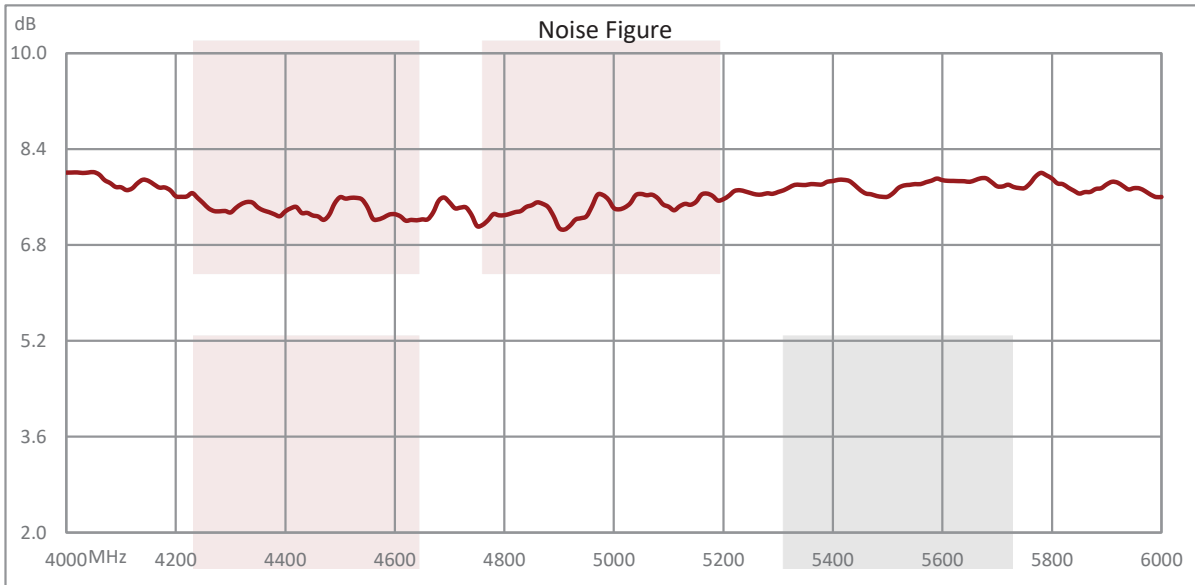
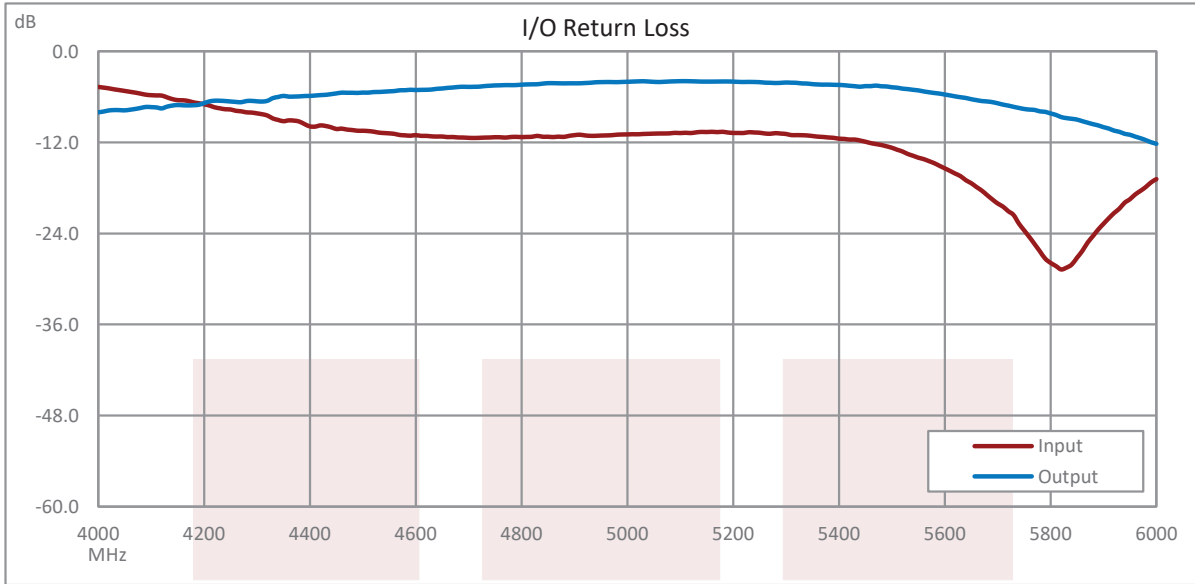


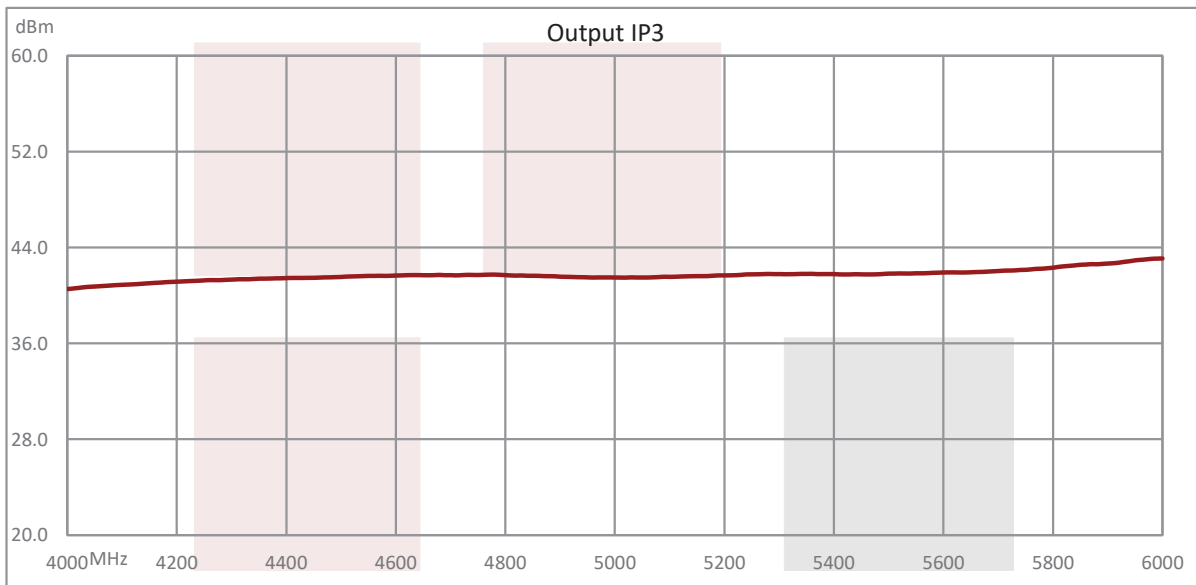
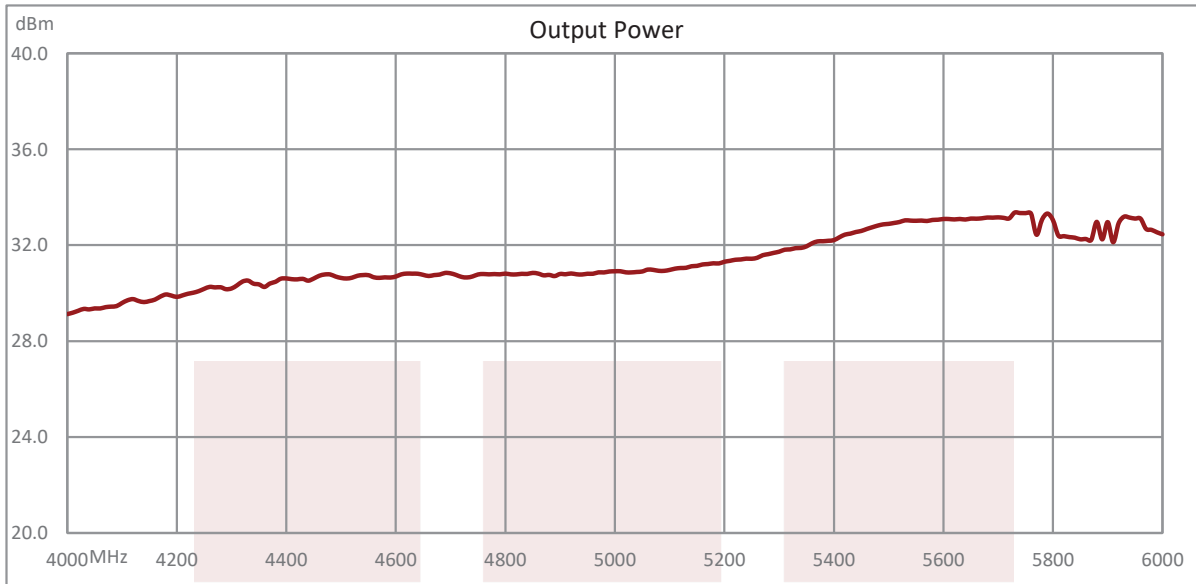
Amplifier Power-up Precautions

- 1.) Confirm that proper ESD precautions and controls are always in place before handling any Amplifier module.
- 2.) Confirm adequate thermal management is in place to effectively dissipate heat away from the Amplifier package. The Amplifier operational baseplate temperature must be within the operational temperature range stated in the Amplifier datasheet. Depending on the design and thermal requirements, using a heatsink with cooling fan is always recommended for safe reliable operation. A heat sink without a cooling fan may also be used. Damage caused from overheating will void the warranty.
- 3.) Confirm adequate system grounding is established. The DC power supply and Amplifier must have a common ground in order to operate properly.
- 4.) Power Amplifiers may require additional DC Current when initially powered-up. Depending on the design, the input current draw could range from an additional 10% to 100% above the maximum rated DC current of the Amplifier. This varies based on product part number.
- 5.) Confirm the DC power supply, if limited, is set to allow for additional start-up current that's rated for the Power Amplifier.
- 6.) Confirm the system is designed and calibrated for 50 ohms. Any impedance mismatch may cause performance issues.
- 7.) Perform a CALIBRATION (if required) with the loads before connecting the Amplifier to the Network Analyzer to ensure proper performance.
- 8.) Use a fixed attenuator between the signal source and input port of the Amplifier to optimize the input VSWR match.
- 9.) Confirm the input power level at the input port of the amplifier does not exceed the maximum rated limit for input power (as stated in the Amplifier datasheet).
 P_{in} for Small Signal Gain = P1dB-SSG-10 dB
 P_{in} for P1dB = P1dB-SSG+1 dB
- 10.) Confirm the Network Analyzer is always connected to the Amplifier first before DC power is applied to the Amplifier.
- 11.) As long as the input and output ports of the amplifier are connected to a 50Ohm load and RF signal power is applied, the Amplifier can be powered up with DC voltage.
- 12.) Confirm the Amplifier output load is matched for a 50 Ohm impedance and will not exceed the maximum rated VSWR or Return Loss limit for the Amplifier. Exceeding the maximum rated VSWR or Return Loss limit will result in reflected signal power that could damage the Amplifier and void the warranty.
- 13.) **Power Amplifier connected to an Antenna for signal transmission** - It's strongly recommended to use a high power fixed attenuator pad or an Isolator between the output port of the Amplifier and input port to the antenna. Any reflected signal power due to impedance mismatch will likely damage the Amplifier and void the warranty.
- 14.) The attenuator or isolator used at the output port of the Amplifier must be rated to handle the output power level and operational frequency band of the amplifier.

Typical Performance Data





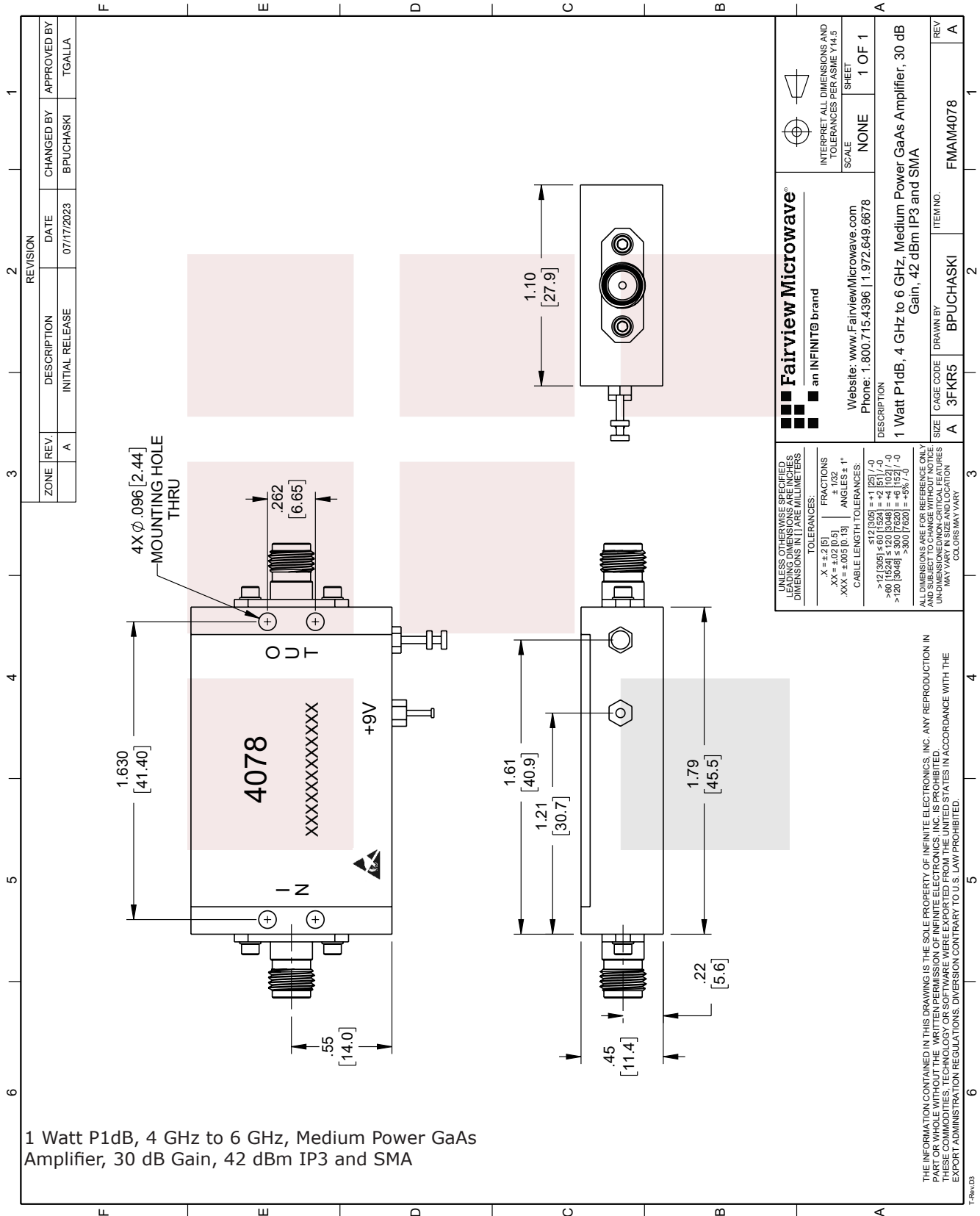


1 Watt P1dB, 4 GHz to 6 GHz, Medium Power GaAs Amplifier, 30 dB Gain, 42 dBm IP3 and SMA from Fairview Microwave is in-stock and available to ship same-day. All of our RF/microwave products are available off-the-shelf from our ISO 9001:2008 certified facilities in Lewisville, Texas. Fairview Microwave is RF on-demand.

For additional information on this product, please click the following link: [1 Watt P1dB, 4 GHz to 6 GHz, Medium Power GaAs Amplifier, 30 dB Gain, 42 dBm IP3 and SMA FMAM4078](#)

URL:

The information contained in this document is accurate to the best of our knowledge and representative of the part described herein. It may be necessary to make modifications to the part and/or the documentation of the part, in order to implement improvements. Fairview Microwave reserves the right to make such changes as required. Unless otherwise stated, all specifications are nominal. Fairview Microwave does not make any representation or warranty regarding the suitability of the part described herein for any particular purpose, and Fairview Microwave does not assume any liability arising out of the use of any part or documentation.



REVISION		CHANGED BY		APPROVED BY	
ZONE	REV.	DESCRIPTION	DATE		
	A	INITIAL RELEASE	07/17/2023	BPUCHASKI	TGALLA

Fairview Microwave® an INFINIT® brand		INTERPRET ALL DIMENSIONS AND TOLERANCES PER ASME Y14.5	
Website: www.FairviewMicrowave.com Phone: 1-800-715-4396 1-972-649-6678		SCALE	SHEET
		NONE	1 OF 1
DESCRIPTION			
1 Watt P1dB, 4 GHz to 6 GHz, Medium Power GaAs Amplifier, 30 dB Gain, 42 dBm IP3 and SMA			
SIZE	CAGE CODE	DRAWN BY	ITEM NO.
A	3FKR5	BPUCHASKI	FMAM4078
REV			A