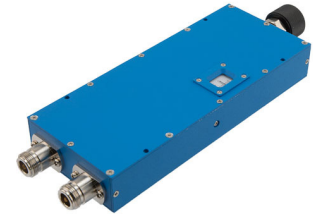


## Adjustable Phase Shifter, DC to 4GHz, With an Adjustable Phase of 90 Deg. Per GHz with N-type connector

Fairview Microwave FM82P5015 is a phase shifter that has phase adjustment range of 90 degrees per GHz with precision rotary dial design for controllable phase adjustment across a frequency range from 0 to 4GHz. With N-Type female connectors, this RF phase shifter design is tried and true technology that offers exceptional RF performance characteristics that include 1.2 dB maximum insertion loss and a maximum VSWR of 1.4:1. Phase shifters are part of Pasternack's comprehensive RF passive product offerings which are available in stock and ready for same-day shipment.



### Electrical Specifications (Values at +25° C, Sea Level)

Description	Min	Typ	Max	Units
Frequency Range	DC		4	GHz
Impedance		50		Ohms
Phase Shift	0		360	Degrees
Phase Adjustment	0		90	Deg/GHz
Input VSWR			1.4:1	
Output VSWR				
Insertion Loss			1.2	dB
Input Power, CW			100	dBm
Input Power, Peak			5	kWatts
	5µs pulse, 2% duty cycle			
	5µs pulse, 2% duty cycle			

### Features:

- Phase Tuning Range: 0 to 360 degrees
- Rotary Dial Design for Continuous Adjustment
- Frequency Range from DC to 4GHz
- N-Type Female Connectorized Design
- Max VSWR 1.4:1
- Max Power Rating: 100 Watts (CW)
- Insertion Loss: 1.2 dB Max

### Applications:

- Test & Measurements
- Radar Development
- Military Communications Systems
- Phase Array Antenna System
- Satellite Communications

### Mechanical Specifications

#### Size

Length	9.29 in [235.97 mm]
Width/Diameter	2.99 in [75.95 mm]
Height	1.2 in [30.48 mm]
Weight	2.6 lbs [1.18 kg]
Body Material and Plating	Aluminum

#### Configuration

Input Connector	N Female
Output Connector	N Female

### Environmental Specifications

#### Temperature

Operating Range	-10 to 50 deg C
Storage Range	-40 to 70 deg C

### Compliance Certifications (see [product page](#) for current document)

### Plotted and Other Data

Notes:

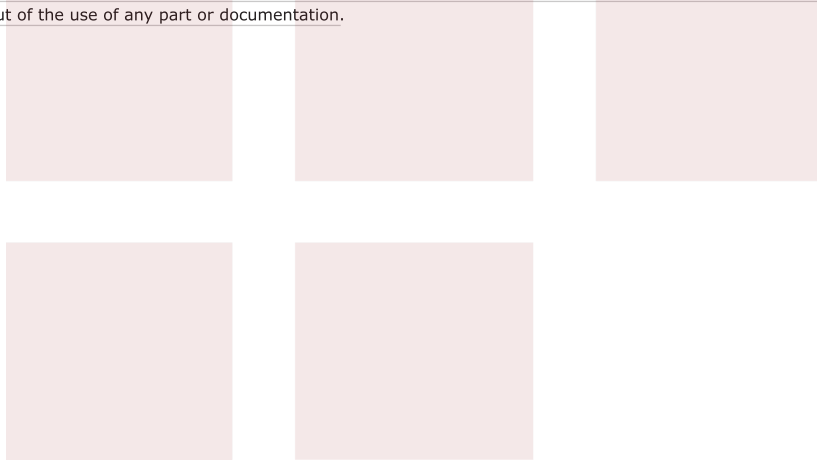
Fairview Microwave  
301 Leora Ln., Suite 100  
Lewisville, TX 75056  
Tel: 1-800-715-4396 / (972) 649-6678  
Fax: (972) 649-6689  
[www.fairviewmicrowave.com](http://www.fairviewmicrowave.com)  
[sales@fairviewmicrowave.com](mailto:sales@fairviewmicrowave.com)

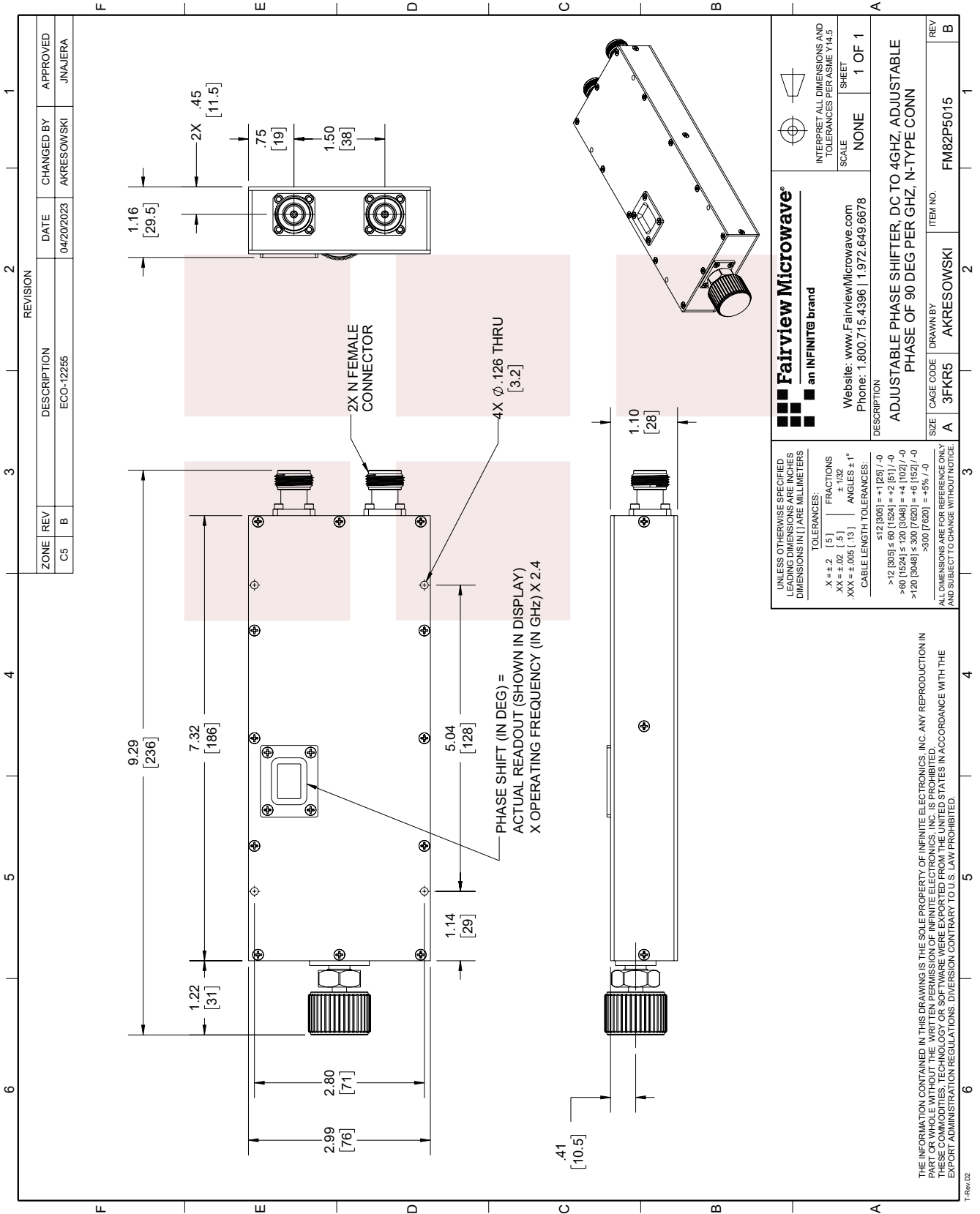
Adjustable Phase Shifter, DC to 4GHz, With an Adjustable Phase of 90 Deg. Per GHz with N-type connector from Fairview Microwave is in-stock and available to ship same-day. All of our RF/microwave products are available off-the-shelf from our ISO 9001:2008 certified facilities in Lewisville, Texas. Fairview Microwave is RF on-demand.

For additional information on this product, please click the following link: [Adjustable Phase Shifter, DC to 4GHz, With an Adjustable Phase of 90 Deg. Per GHz with N-type connector FM82P5015](#)

URL: <https://www.fairviewmicrowave.com/n-adjustable-phase-shifter-dc-4-ghz-fm82p5015-p.aspx>

The information contained in this document is accurate to the best of our knowledge and representative of the part described herein. It may be necessary to make modifications to the part and/or the documentation of the part, in order to implement improvements. Fairview Microwave reserves the right to make such changes as required. Unless otherwise stated, all specifications are nominal. Fairview Microwave does not make any representation or warranty regarding the suitability of the part described herein for any particular purpose, and Fairview Microwave does not assume any liability arising out of the use of any part or documentation.





ZONE		REVISION		DATE		CHANGED BY		APPROVED	
C5	B	ECO-12255		04/20/2023	AKRESOWSKI	JINAJERA			

		INTERPRET ALL DIMENSIONS AND TOLERANCES PER ASME Y14.5	
Website: <a href="http://www.FairviewMicrowave.com">www.FairviewMicrowave.com</a> Phone: 1.800.715.4396   1.972.649.6678		SCALE: NONE SHEET: 1 OF 1	
DESCRIPTION: <b>ADJUSTABLE PHASE SHIFTER, DC TO 4GHZ, ADJUSTABLE PHASE OF 90 DEG PER GHZ, N-TYPE CONN</b>			
SIZE	CAGE CODE	DRAWN BY	ITEM NO.
A	3FKR5	AKRESOWSKI	FM82P5015
REV	REV		B

UNLESS OTHERWISE SPECIFIED, DIMENSIONS ARE IN INCHES. DIMENSIONS IN PARENTHESES ARE IN MILLIMETERS.

TOLERANCES:  
 .X = ±.2 [5] FRACTIONS  
 .XX = ±.02 [.5] ANGLES ± 1°  
 .XXX = ±.005 [.13]

CABLE LENGTH TOLERANCES:  
 ≤12 [305] = ±1 [25] / -0  
 >12 [305] ≤ 60 [1524] = +2 [51] / -0  
 >60 [1524] ≤ 120 [3048] = +4 [102] / -0  
 >120 [3048] ≤ 300 [7620] = +6 [152] / -0  
 >300 [7620] = +5% / -0

ALL DIMENSIONS ARE FOR REFERENCE ONLY AND SUBJECT TO CHANGE WITHOUT NOTICE.

THE INFORMATION CONTAINED IN THIS DRAWING IS THE SOLE PROPERTY OF INFINITE ELECTRONICS, INC. ANY REPRODUCTION IN PART OR WHOLE WITHOUT THE WRITTEN PERMISSION OF INFINITE ELECTRONICS, INC. IS PROHIBITED.  
 EXPORT ADMINISTRATION REGULATIONS: DIVERSION CONTRARY TO U.S. LAW PROHIBITED.