

698-960/1710-2700 MHz 10 dBi Log periodic Antenna

The Fairview Microwave FM51LP1001 is a high performance wide band log periodic antenna designed to operate from 698-960 MHz and 1710-2700 MHz. This Wideband design eliminates the need to purchase different antennas for each frequency. This simplifies installations since the same antenna can be used for a wide array of wireless applications where wide coverage is desired.

The FM51LP1001 is ideal for Distributed Antenna Systems, DAS. A DAS system is used to distribute Cellular and WiFi signals throughout a building or area. It is also suited for directional and multipoint IEEE 802.11b/g/n wireless LANs, public wireless hotspot applications and other systems operating in the 2.4GHz ISM band. It is ideal for LPWAN/IoT/M2M applications such as LoRA, LTE-M and NB-IoT. The broadband characteristics of the antenna enable it to operate over a very wide frequency range. This antenna features 9/10 dBi of gain and a 56°/45° vertical beam width.

The internal components of this antenna are enclosed within a UV-stable white ABS radome for all-weather operation. It is supplied with a tilt and swivel mast mount kit.

Configuration

Design	Log Periodic
Gain	9 to 10 dBi
Polarization	Vertical or Horizontal
Cable Type	Coax Cable
Cable Length	8 in [203.2 mm]
Connector Type	N Female
Number of Ports	1

Electrical Specifications

Description	Min	Typ	Max	Units
Input VSWR		1.6:1	1.6:1	
Impedance		50		Ohms
Gain	9	10	10	dBi
Front to Back Ratio		19		dB
Input Power			50	Watts

Specifications by Frequency

Description	Band 1	Band 2	Band 3	Band 4	Band 5	Units
Range	0.698-0.96	1.71-2.5				GHz
Gain	9	10				dBi
Horiz. Beam Width	78	75				Degrees
Vert. Beam Width	56	45				Degrees
Max Input Power	50					Watts

Mechanical Specifications

Radome Material	ABS
Size	
Length	11.6 in [294.64 mm]



Features:

- Frequency coverage for 700 MHz, 850 MHz, AWS and PCS bands
- Weatherproof ABS
- Internal combiner eliminated the need for separate coax cables for each frequency
- Supplied with tilt and swivel mast bracket

Applications:

- DAS (Distributed Antenna Systems)
- Cellular networks
- Public safety
- IEEE 802.11b/g WiFi applications
- LPWAN, LoRA, LTE-M, NB-IoT, IoT, M2M applications

Fairview Microwave
301 Leora Ln., Suite 100
Lewisville, TX 75056
Tel: 1-800-715-4396 / (972) 649-6678
Fax: (972) 649-6689
www.fairviewmicrowave.com
sales@fairviewmicrowave.com

Width	2.4 in [60.96 mm]
Height	8.1 in [205.74 mm]
Weight	0.223 lbs [101.15 g]

Environmental Specifications

Temperature	
Operating Range	-40 to +85 deg C
Wind Loading	150 MPH [241.4 KPH]

Compliance Certifications (see [product page](#) for current document)

Plotted and Other Data

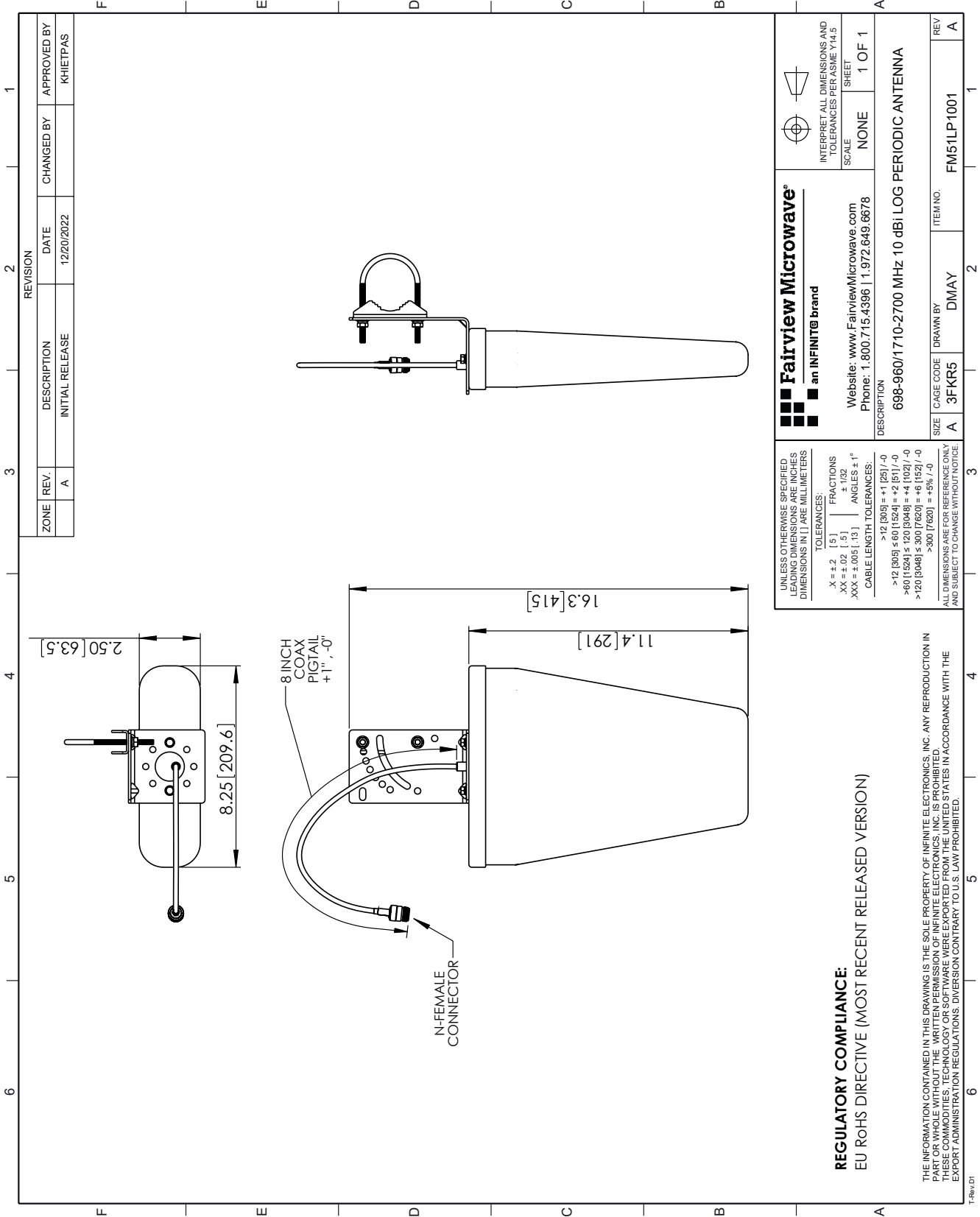
Notes:

698-960/1710-2700 MHz 10 dBi Log periodic Antenna from Fairview Microwave is in-stock and available to ship same-day. All of our RF/microwave products are available off-the-shelf from our ISO 9001:2008 certified facilities in Lewisville, Texas. Fairview Microwave is RF on-demand.

For additional information on this product, please click the following link: [698-960/1710-2700 MHz 10 dBi Log periodic Antenna FM51LP1001](#)

URL: <https://www.fairviewmicrowave.com/multi-antenna-10-dbi-gain-n-fm51lp1001-p.aspx>

The information contained in this document is accurate to the best of our knowledge and representative of the part described herein. It may be necessary to make modifications to the part and/or the documentation of the part, in order to implement improvements. Fairview Microwave reserves the right to make such changes as required. Unless otherwise stated, all specifications are nominal. Fairview Microwave does not make any representation or warranty regarding the suitability of the part described herein for any particular purpose, and Fairview Microwave does not assume any liability arising out of the use of any part or documentation.



REVISION		DATE	APPROVED BY
ZONE	REV.	DESCRIPTION	CHANGED BY
	A	INITIAL RELEASE	KHIETPAS
		12/20/2022	

Fairview Microwave[®] an INFINIT [®] brand Website: www.FairviewMicrowave.com Phone: 1.800.715.4396 1.972.649.6678	INTERPRET ALL DIMENSIONS AND TOLERANCES PER ASME Y14.5 SCALE: NONE SHEET: 1 OF 1
	DESCRIPTION: 698-960/1710-2700 MHZ 10 dBi LOG PERIODIC ANTENNA
UNLESS OTHERWISE SPECIFIED, DIMENSIONS ARE IN INCHES AND DIMENSIONS IN LARGE MILLIMETERS. TOLERANCES: .X = ±.2 [5] FRACTIONS ± 1/32 .XX = ±.02 [5] ANGLES ± 1° .XXX = ±.005 [13]	SIZE: A CAGE CODE: 3FKR5 DRAWN BY: DMAY ITEM NO.: FM51LP1001 REV: A
CABLE LENGTH TOLERANCES: >12 [305] = ±1 [25] / -0 >12 [305] ≤ 60 [1524] = ±2 [51] / -0 >60 [1524] ≤ 120 [3048] = ±4 [102] / -0 >120 [3048] ≤ 300 [7620] = ±6 [152] / -0 >300 [7620] = ±8% / -0 ALL DIMENSIONS ARE FOR REFERENCE ONLY AND SUBJECT TO CHANGE WITHOUT NOTICE.	

REGULATORY COMPLIANCE:
 EU RoHS DIRECTIVE (MOST RECENT RELEASED VERSION)

THE INFORMATION CONTAINED IN THIS DRAWING IS THE SOLE PROPERTY OF INFINITE ELECTRONICS, INC. ANY REPRODUCTION IN WHOLE OR IN PART WITHOUT THE WRITTEN AUTHORIZATION OF INFINITE ELECTRONICS, INC. IS PROHIBITED. THESE COMMODITIES AND TECHNOLOGY OR SOFTWARE WERE EXPORTED FROM THE UNITED STATES IN ACCORDANCE WITH THE EXPORT ADMINISTRATION REGULATIONS. DIVERSION CONTRARY TO U.S. LAW PROHIBITED.