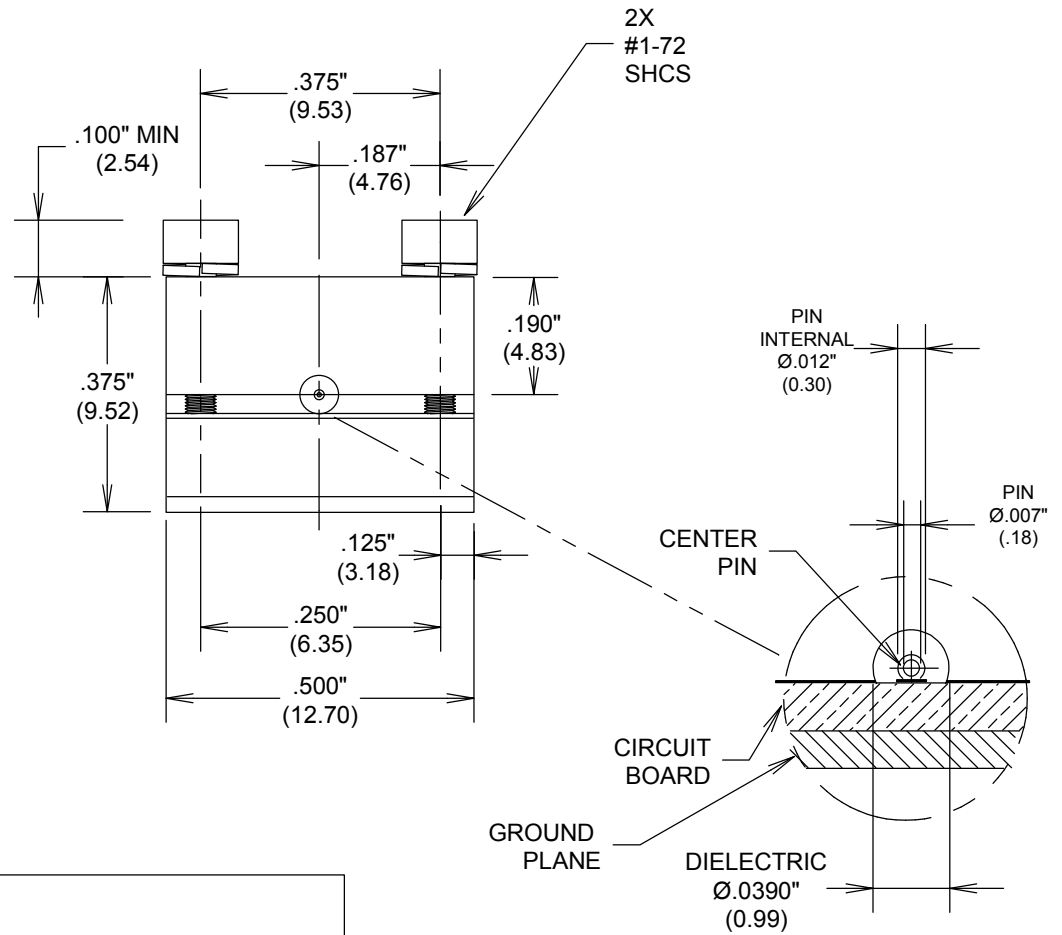
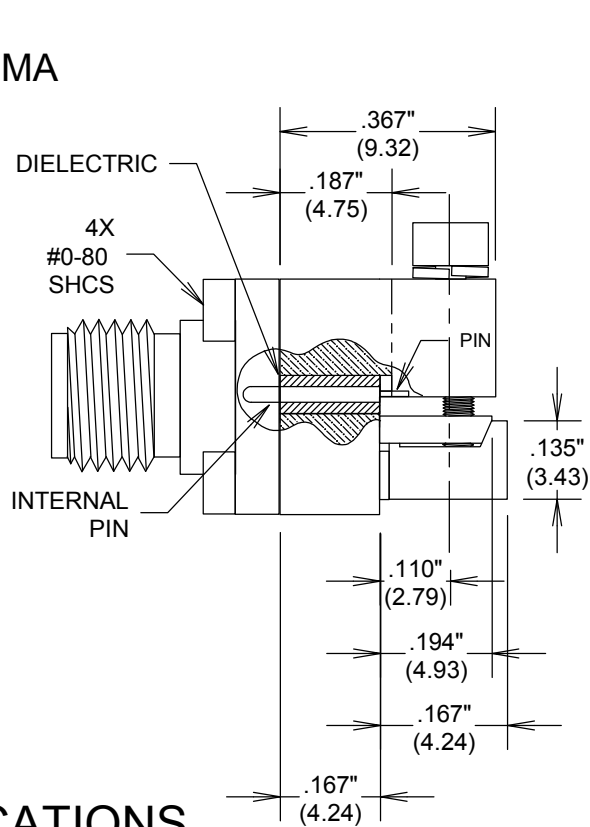


# 27 GHZ SMA EDGE LAUNCH CONNECTOR .007" PIN DIAMETER

SCT039-SMA



## SPECIFICATIONS

### ELECTRICAL:

FREQUENCY: 0-27 GHZ MODE FREE  
 IMPEDANCE: 50 OHMS

### MECHANICAL:

MATERIAL HOUSING: NICKEL PLATED BRASS  
 MATERIAL CONTACTS: BeCu  
 CONTACT PLATING: Au PER MIL-G-45204  
 MATERIAL DIELECTRIC: PTFE  
 BOARD THICKNESS UP TO 110 MIL

### ENVIRONMENTAL:

TEMP: -55°C TO +125°C

ROHS COMPLIANT

## FAIRVIEW MICROWAVE INC.

ALLEN, TX 75013 WWW.FAIRVIEWMICROWAVE.COM

TITLE

27 GHZ SMA EDGE LAUNCH CONNECTOR  
 .007" PIN DIAMETER

SIZE

A

CAGE CODE

3FKR5

DWG NO

SCT039-SMA

REV

A

ALL DIMENSIONS IN inches(MM) Typical

SCALE

SHEET