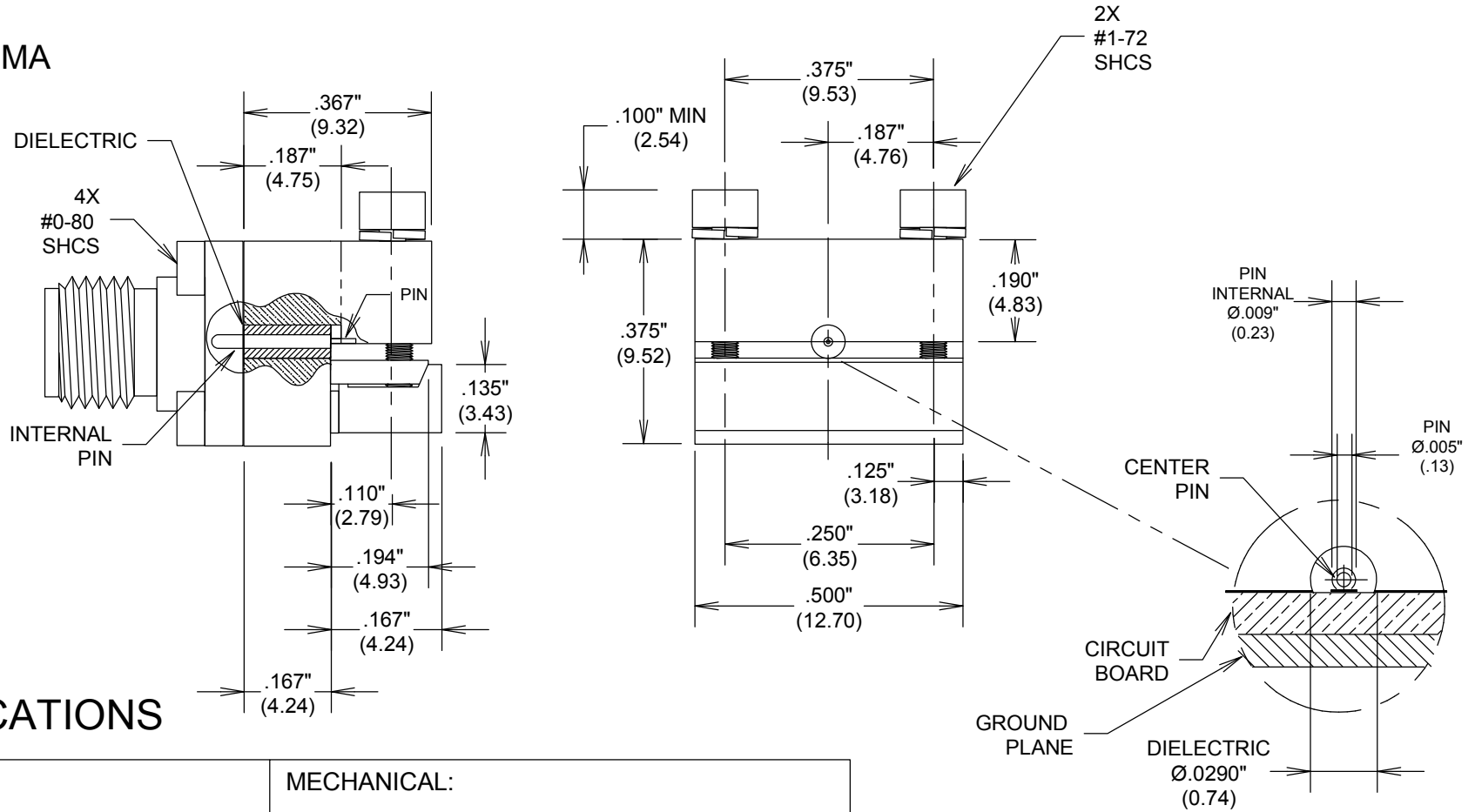


27 GHZ SMA EDGE LAUNCH CONNECTOR .005" PIN DIAMETER

SCT029-SMA



SPECIFICATIONS

ELECTRICAL:

FREQUENCY: 0-27 GHZ MODE FREE
 IMPEDANCE: 50 OHMS

MECHANICAL:

MATERIAL HOUSING: NICKEL PLATED BRASS
 MATERIAL CONTACTS: BeCu
 CONTACT PLATING: Au PER MIL-G-45204
 MATERIAL DIELECTRIC: PTFE
 BOARD THICKNESS: UP TO 110 MIL

ENVIRONMENTAL:

TEMP: -55°C TO +125°C

ROHS COMPLIANT

FAIRVIEW MICROWAVE INC.

ALLEN, TX 75013 WWW.FAIRVIEWMICROWAVE.COM

TITLE

27 GHZ SMA EDGE LAUNCH CONNECTOR
 .005" PIN DIAMETER

SIZE

A

CAGE CODE

3FKR5

DWG NO

SCT029-SMA

REV

A

ALL DIMENSIONS IN inches(MM) Typical

SCALE

SHEET