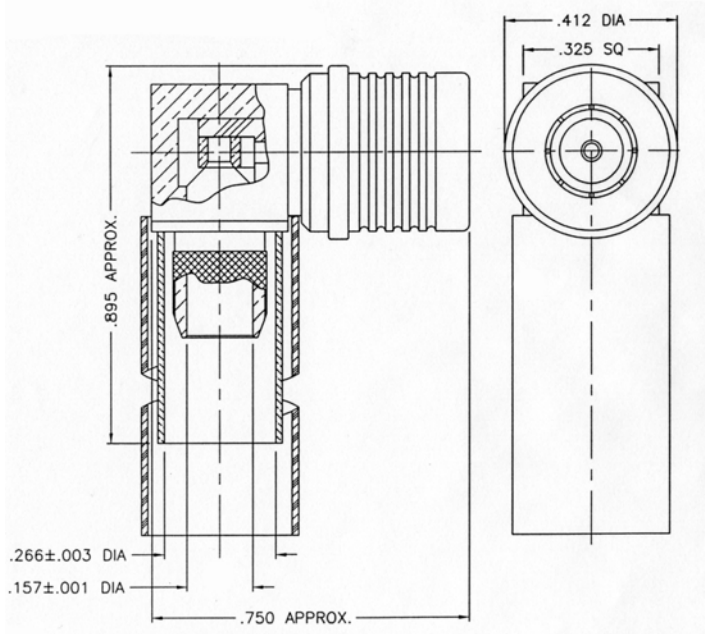


LTR	DESCRIPTION	DATE	BY
-	Released	8/20/03	MS
B	Deleted Gasket	10/24/06	JCL

**I. MATERIALS & FINISHES**

center contact: Gold Plated Phosphor Bronze (non-solder)
 outer contact: Nickel Plated Brass
 coupling nut: Nickel Plated Brass
 body: Nickel Plated Brass
 crimp sleeve: Nickel Plated Copper
 dielectric: Teflon® PTFE
 shrink sleeve: Adhesive Lined Polyolefin
 attachment: braid crimp

II. ELECTRICAL PROPERTIES

impedance: 50 ohms
 working voltage: 375 vrms (max)
 vswr: 1.25:1 (max) up to 18 GHz
 insertion loss: $0.10 \times \sqrt{f_{\text{ghz}}}$

Unless otherwise specified, dimensions are in inches. Tolerances are applicable when specified.

These drawings and specifications contain proprietary information which is the property of Times Microwave Systems.

Approvals

Drawn	MS	8/20/03

**TIMES MICROWAVE SYSTEMS**

Wallingford, CT 06492
 (203) 949-8400; (203) 949-8423.Fax
 www.timesmicrowave.com

EZ-240-QM-RA

Type-QMA male (plug) Right Angle
 for LMR-240 Cable

Size A	CAGE CODE 68999	Drawing No.: 3190-1539
--------	---------------------------	----------------------------------

Scale: NA

Rev. (B)

Sheet: 1 of 1