

SMP Male Smooth Bore CM PCB Connector Surface Mount Solder Attachment

SMP male smooth bore CM connector with solder attachment for surface mount PCB, part number SC5363, from Fairview Microwave is in-stock and ships same day. This SMP male connector operates up to a maximum frequency of 18 GHz and offers excellent VSWR of 1.15:1. This blind mate connector is ideal for applications without direct visual or tactile access to the connection point, for example, when two circuit boards need to be mated.

Fairview's SMP male connector SC5363 datasheet specifications and outline drawing are shown in this PDF below. Our extensive offering of RF, microwave and millimeter wave connectors allows designers to configure and customize their signal connections however they like. From providing an I/O for a board design to creating a custom cable assembly configuration, Fairview Microwave has a connector solution to meet your needs. Fairview Microwave also has the expertise to build your custom cable assemblies for you and ship them same-day.

Electrical Specifications

Description	Min	Typ	Max	Units
Frequency Range	DC		18	GHz
VSWR			1.15:1	
Insertion Loss			0.13	dB
DWV (AC)			500	Vrms
High Potential Voltage @ 5 MHz			325	Vrms
Corona Discharge @ 70,000 feet			125	Vrms
Inner Cond. DC Resistance			6	mOhms
Outer Cond. DC Resistance			2	mOhms
Insulation Resistance	5,000			MOhms

Mechanical Specifications

Size	
Length	0.24 in [6.1 mm]
Width/Dia.	0.22 in [5.59 mm]
Weight	0.003 lbs [1.36 g]

Material Specifications

Description	Material	Plating
Contact	Beryllium Copper	Gold MIL-G-45204
Insulation	Torlon	
Body	Beryllium Copper	Gold MIL-G-45204



Configuration:

- Smooth Bore CM SMP Male Connector
- 50 Ohms
- Straight Body Geometry
- Surface Mount Interface Type
- Solder Attachment

Features:

- Operating Frequency of 18 GHz Max.
- Excellent VSWR of 1.15:1
- Blind Mate Connector
- Gold Plated Beryllium Copper Contact
- Contact plating according to MIL-G-45204

Applications:

- General Purpose Test
- PCB Applications

Fairview Microwave
301 Leora Ln., Suite 100
Lewisville, TX 75056
Tel: 1-800-715-4396 / (972) 649-6678
Fax: (972) 649-6689
www.fairviewmicrowave.com
sales@fairviewmicrowave.com

Compliance Certifications (see [product page](#) for current document)

Plotted and Other Data

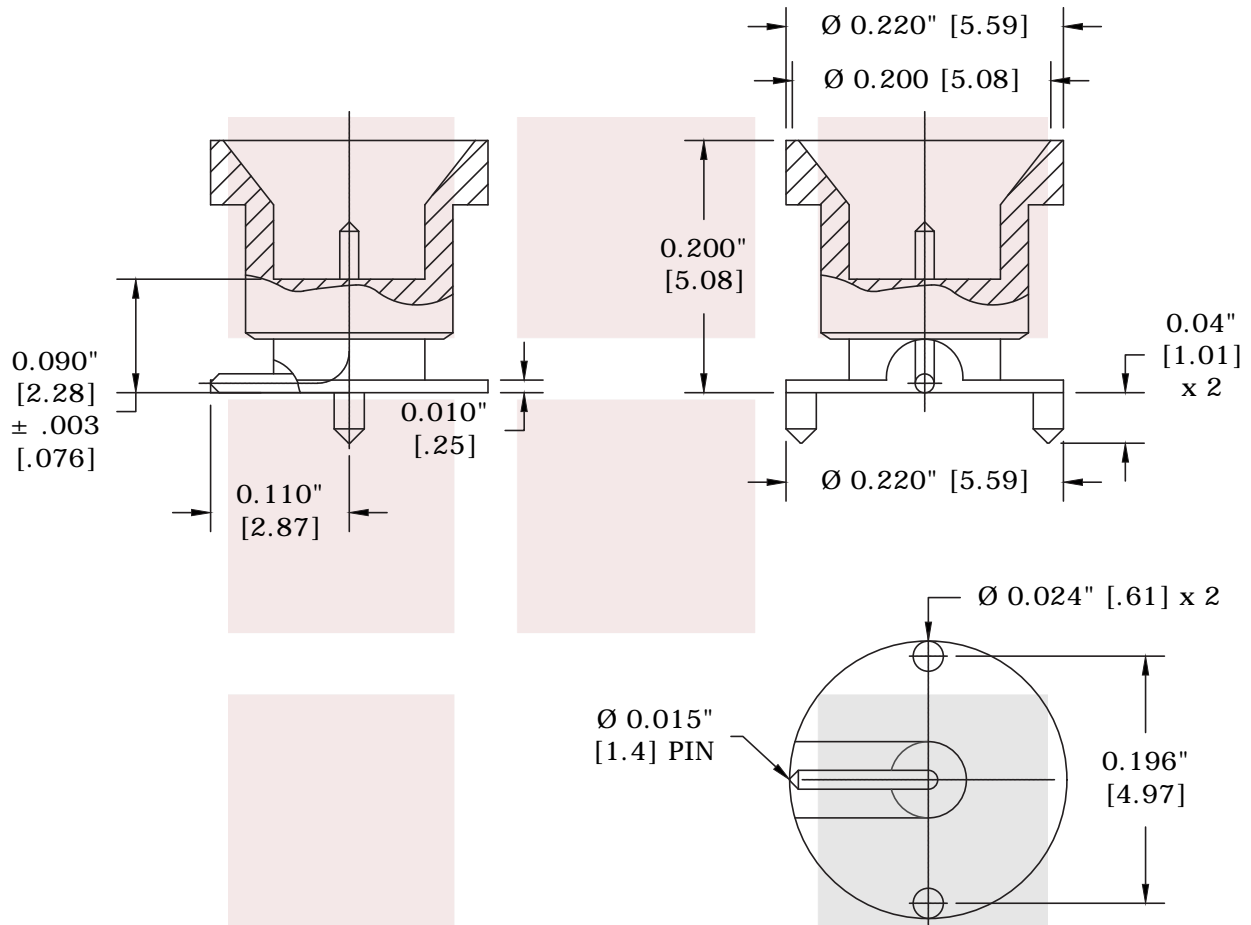
Notes:

SMP Male Smooth Bore CM PCB Connector Surface Mount Solder Attachment from Fairview Microwave is in-stock and available to ship same-day. All of our RF/microwave products are available off-the-shelf from our ISO 9001:2008 certified facilities in Lewisville, Texas. Fairview Microwave is RF on-demand.

For additional information on this product, please click the following link: [SMP Male Smooth Bore CM PCB Connector Surface Mount Solder Attachment SC5363](#)

URL: <https://www.fairviewmicrowave.com/smp-male-standard-smooth-bore-surface-mount-pcb-connector-sc5363-p.aspx>

The information contained in this document is accurate to the best of our knowledge and representative of the part described herein. It may be necessary to make modifications to the part and/or the documentation of the part, in order to implement improvements. Fairview Microwave reserves the right to make such changes as required. Unless otherwise stated, all specifications are nominal. Fairview Microwave does not make any representation or warranty regarding the suitability of the part described herein for any particular purpose, and Fairview Microwave does not assume any liability arising out of the use of any part or documentation.



FAIRVIEW MICROWAVE INC.

WWW.FAIRVIEWMICROWAVE.COM

TITLE
SMP Male Smooth Bore CM PCB Connector Surface
Mount Solder Attachment

NOTES:

1. UNLESS OTHERWISE SPECIFIED ALL DIMENSIONS ARE NOMINAL.
2. ALL SPECIFICATIONS ARE SUBJECT TO CHANGE WITHOUT NOTICE AT ANY TIME.
3. DIMENSIONS ARE IN INCHES [mm].

DWG NO

SC5363

CAGE CODE

3FKR5

CAD FILE

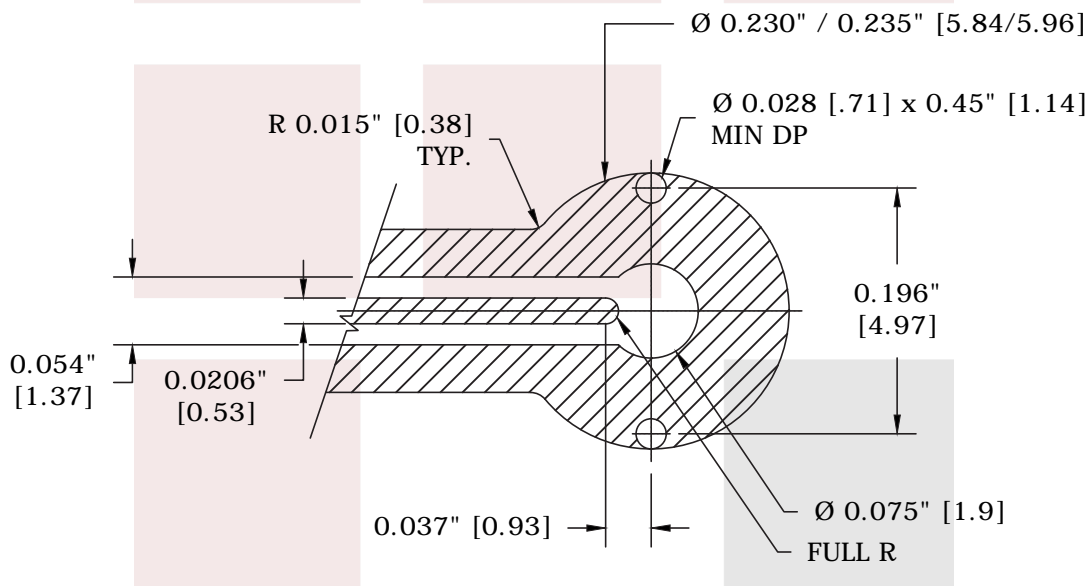
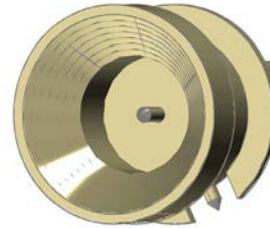
061815

SHEET

SCALE N/A

SIZE A

5568



NOTE:
THE ABOVE DIMENSIONS ARE
GUIDELINES ONLY. CHANGES MAY
BE REQUIRED DUE TO DIFFERENT
BOARD MATERIALS, PROCESSES, TYPE
OF BRAZE, SOLDER OR EPOXY.

FAIRVIEW MICROWAVE INC. WWW.FAIRVIEWMICROWAVE.COM		NOTES: 1. UNLESS OTHERWISE SPECIFIED ALL DIMENSIONS ARE NOMINAL. 2. ALL SPECIFICATIONS ARE SUBJECT TO CHANGE WITHOUT NOTICE AT ANY TIME. 3. DIMENSIONS ARE IN INCHES [mm].			
TITLE SMP Male Smooth Bore CM PCB Connector Surface Mount Solder Attachment		DWG NO SC5363		CAGE CODE 3FKR5	
CAD FILE	061815	SHEET	SCALE	N/A	SIZE A 5568