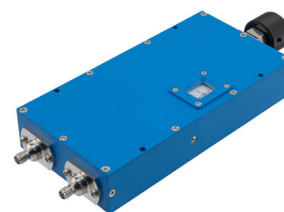


Adjustable Phase Shifter, DC to 2GHz, With an Adjustable Phase of 60 Deg. Per GHz and SMA (SS)

Fairview Microwave FM82P5004 is a phase shifter that has phase adjustment range of 60 degrees per GHz with precision rotary dial design for controllable phase adjustment across a frequency range from 0 to 2GHz. With SMA female connectors, this RF phase shifter design is tried and true technology that offers exceptional RF performance characteristics that include 0.5 dB maximum insertion loss and a maximum VSWR of 1.3:1. Phase shifters are part of Pasternack's comprehensive RF passive product offerings which are available in stock and ready for same-day shipment.



Features:

- Phase Tuning Range: 0 to 120 degrees
- Rotary Dial Design for Continuous Adjustment
- Frequency Range from DC to 2GHz
- SMA Female Connectorized Design
- Max VSWR 1.3:1
- Max Power Rating: 100 Watts (CW)
- Insertion Loss: 0.5 dB Max

Applications:

- Test & Measurements
- Radar Development
- Military Communications Systems
- Phase Array Antenna System
- Satellite Communications

Electrical Specifications (Values at +25° C, Sea Level)

Description	Min	Typ	Max	Units
Frequency Range	DC		2	GHz
Impedance		50		Ohms
Phase Shift	0		120	Degrees
Phase Adjustment	0		60	Deg/
GHz				
VSWR			1.3:1	
Insertion Loss at 0V DC Control				0.5
dB				
Input Power, CW			100	dBm
Input Power, Peak			5	kWatts
5µs pulse, 1% duty cycle				
5µs pulse, 1% duty cycle				

Absolute Maximum Rating

Absolute Maximum Rating

Mechanical Specifications

Size	
Length	7.87 in [199.9 mm]
Width/Diameter	2.99 in [75.95 mm]
Height	1.2 in [30.48 mm]
Weight	1.08 lbs [489.88 g]
Body Material and Plating	Aluminum

Fairview Microwave
301 Leora Ln., Suite 100
Lewisville, TX 75056
Tel: 1-800-715-4396 / (972) 649-6678
Fax: (972) 649-6689
www.fairviewmicrowave.com
sales@fairviewmicrowave.com

Configuration

Input ConnectorSMA Female

Output ConnectorSMA Female

Environmental Specifications

Temperature

Operating Range-10 to 50 deg C

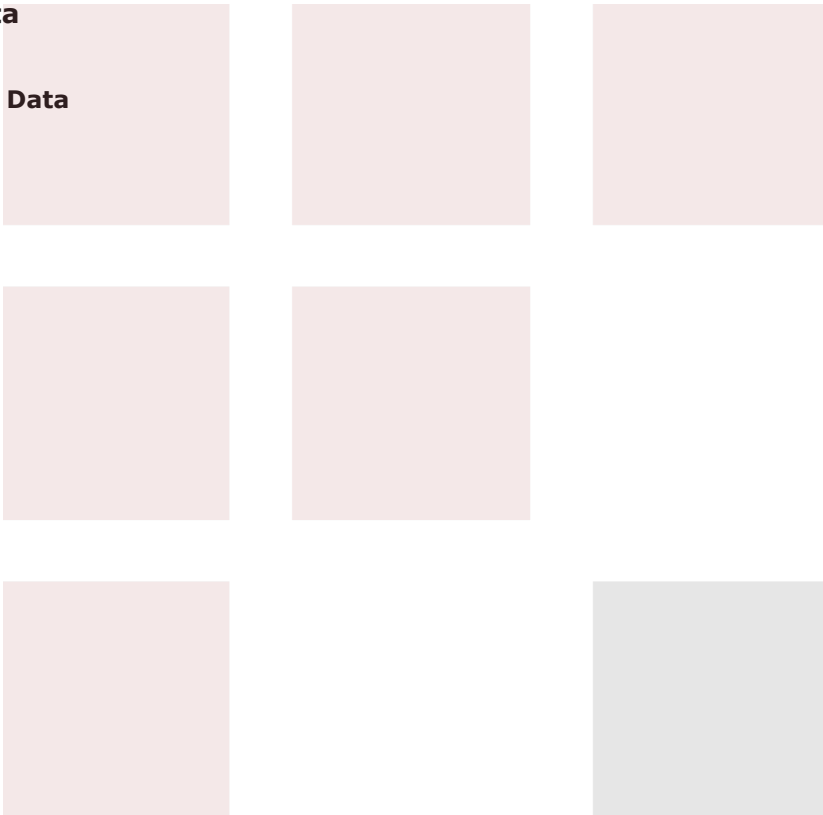
Storage Range-40 to 70 deg C

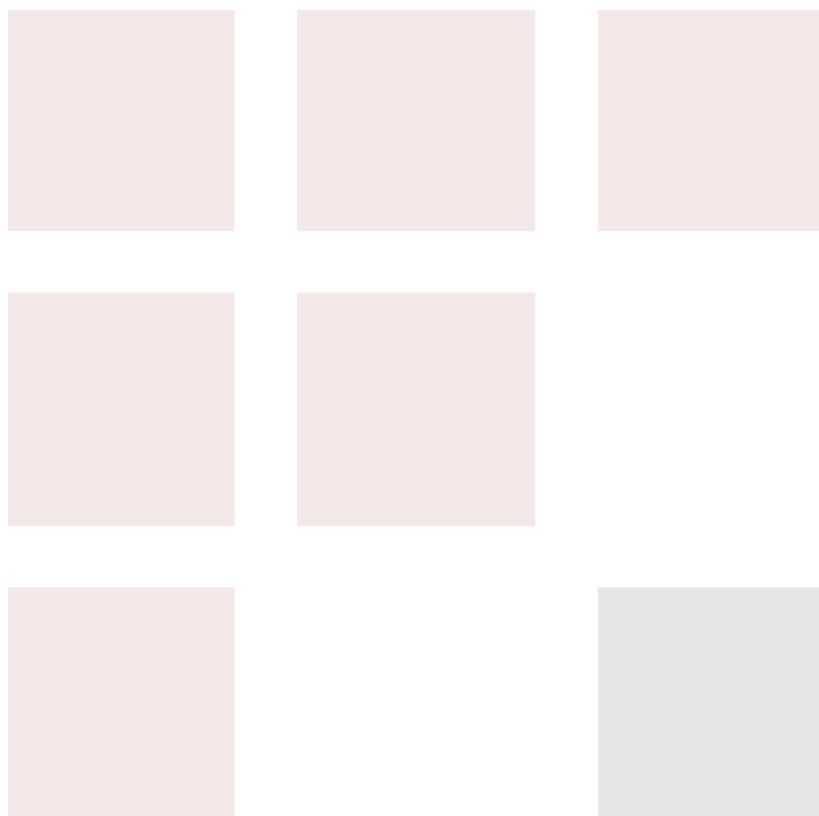
Compliance Certifications (see [product page](#) for current document)

Plotted and Other Data

Notes:

Typical Performance Data





Adjustable Phase Shifter, DC to 2GHz, With an Adjustable Phase of 60 Deg. Per GHz and SMA (SS) from Fairview Microwave is in-stock and available to ship same-day. All of our RF/microwave products are available off-the-shelf from our ISO 9001:2008 certified facilities in Lewisville, Texas. Fairview Microwave is RF on-demand.

For additional information on this product, please click the following link: [Adjustable Phase Shifter, DC to 2GHz, With an Adjustable Phase of 60 Deg. Per GHz and SMA \(SS\) MNTESTFM](#)

URL: <https://www.fairviewmicrowave.com/MNTESTFM-p.aspx>

The information contained in this document is accurate to the best of our knowledge and representative of the part described herein. It may be necessary to make modifications to the part and/or the documentation of the part, in order to implement improvements. Fairview Microwave reserves the right to make such changes as required. Unless otherwise stated, all specifications are nominal. Fairview Microwave does not make any representation or warranty regarding the suitability of the part described herein for any particular purpose, and Fairview Microwave does not assume any liability arising out of the use of any part or documentation.



Adjustable Phase Shifter, DC to 2GHz, With an
Adjustable Phase of 60 Deg. Per GHz and SMA (SS)