

## SMA Male to RA SMA Male MIL-DTL-17 Cable M17/183-00001 Coax in 72 Inch



### FMHR0120-72

#### Configuration

- Connector 1: M39012/55-3029 (SMA Male)
- Connector 2: M39012/56-3129 (SMA Male Right Angle)
- Cable: M17/183-00001

#### Features

- Max Frequency 1 GHz
- 65.9% Phase Velocity
- Polyolefin Jacket
- J-STD-Soldering
- Lot Traceability Data
- Qualified cable and connectors (QPL)
- Acceptance Test Report
- RF Test Data
- In stock and ready to ship

#### Applications

- General Purpose
- Laboratory Use
- Hi-Reliability
- Unmanned Systems
- Drones
- MIL-DTL-17 Requirements
- Military Electronics

#### Description

MIL-DTL-17 SMA (M39012/55-3029) to SMA (M39012/56-3129) cable assemblies with test reports from Fairview Microwave are part of our full line of reliable RF components available with same-day shipping. These COTS (commercial-off-the-shelf) cable assemblies using M17/183-00001 have traceable processes and materials that are recorded and provided in the included test report. The MIL-DTL-17 coaxial cable and MIL-PRF-39012 connectors are assembled with J-STD-001 soldering processes and meet WHMA-A-620 workmanship criteria. These carefully selected materials, assembly processes and test sequence ensure a dependable cable assembly for high reliability applications where the cost of failure or replacement is high. Each serialized SMA to SMA MIL-DTL-17 cable assembly is traceable to its component lots and test data ship with every cable.

This MIL-C-17 M39012/55-3029 to M39012/56-3129 cable assembly using M17/183-00001 datasheet PDF contains specifications, CAD drawing and dimensions that are shown below. Fairview Microwave offers these high reliability RF cable assemblies with test data, and many other RF, microwave and millimeter wave components which allow designers to configure and customize their signal systems however they like. Whether the need is to provide reliable MIL-DTL-17 interconnects or supporting test reports, Fairview Microwave has the right cable assemblies for the job. Fairview can also expertly build your custom cable assemblies for you and ship same day.

#### Referenced Specifications

IPC/WHMA-A-620	Requirements and Acceptance for Cable and Wire Harness Assemblies
MIL-DTL-17	Cables, Radio Frequency, Flexible and Semirigid, General Specification for
MIL-STD-348	Radio Frequency Connector Interfaces for MIL-DTL-3643, MIL-DTL-3650, MIL-DTL-3655, MIL-DTL-25516, MIL-PRF-31031, MIL-PRF-39012, MIL-PRF-49142, MIL-PRF...
MIL-PRF-39012	Connectors, Coaxial, Radio Frequency, General Specification for
IPC J-STD-001	Requirements for Soldered Electrical and Electronic Assemblies
IPC J-STD-006	Requirements for Electronic Grade Solder Alloys and Fluxed and Non-Fluxed Solid Solders for Electronic Soldering Applications
SAE AS5942	Marking of Electrical Insulating Materials
SAE AS23053	Insulation Sleeving, Electrical, Heat Shrinkable, General Specifications For
SAE AS22520	Crimping Tools, Wire Termination, General Specification For

SMA Male to RA SMA Male MIL-DTL-17 Cable  
M17/183-00001 Coax in 72 Inch



**FMHR0120-72**

**Material Specifications**

Component	Specification
Cable	M17/183-00001 in accordance with MIL-DTL-17
Connector 1	M39012/55-3029 in accordance with MIL-PRF-39012
Connector 2	M39012/56-3129 in accordance with MIL-PRF-39012
Heat Shrink 1	M23053/5-106-0 in accordance with SAE AS23053
Heat Shrink 2	M23053/5-106-0 in accordance with SAE AS23053
Solder	SN63 in accordance with J-STD-006

**Electrical Specifications**

Description	Minimum	Typical	Maximum	Units
Frequency Range	DC		1,000	MHz
VSWR			1.4:1	
Velocity of Propagation		65.9		%
Capacitance		32.2 [105.64]		pF/ft [pF/m]
DC Resistance Inner Conductor		0.97 [3.18]		Ω/1000ft [Ω/Km]
Dielectric Withstanding Voltage (AC)			1,000	Vrms

**Specifications by Frequency**

Description	F1	F2	F3	F4	F5	Units
Frequency	50	100	400	1,000		MHz
Insertion Loss (Max.)	0.29	0.46	1.16	1.89		dB

Electrical Specification Notes:

The Insertion Loss data above is based on the performance specifications of the coax cable used in this assembly. The Insertion Loss includes an estimated insertion loss of 0.06\*SQRT(GHz) dB maximum for the SMA Male connector and 0.15\*SQRT(GHz) dB for the SMA Male right angle connector.

**Mechanical Specifications**

**Cable Assembly**

Description	Minimum	Typical	Maximum	Units
Length*	72 [182.88]	74 [187.96]	72 [182.88]	in [cm]
Cable Outer Diameter	0.191	0.195	0.199	in
Weight		[0]	0.23 [104.33]	lbs [g]

**Cable Characteristics**

Description	Specification
Cable Type	M17/183-00001

SMA Male to RA SMA Male MIL-DTL-17 Cable  
M17/183-00001 Coax in 72 Inch



**FMHR0120-72**

**Cable Characteristics**

Description	Specification
Impedance	50 Ohms
Inner Conductor Type	Stranded
Inner Conductor Material and Plating	Tinned Copper
Dielectric Type	PE
Number of Shields	1
Shield Layer 1	Tinned Copper
Outer Conductor Diameter	0.15 in [3.81 mm]
Jacket Material	Polyolefin

**Connector Characteristics**

Description	Connector 1	Connector 2
Type	SMA Male	SMA Male Right Angle
Specification	MIL-PRF-39012	MIL-PRF-39012
Impedance	50 Ohms	50 Ohms
Configuration	Straight	Right Angle
Contact Material and Plating	Brass, Gold	Brass, Gold
Contact Plating Specification	ASTM B488	ASTM B488
Dielectric Type	Teflon	Teflon
Body Material and Plating	Steel, Passivated	Steel, Gold
Body Plating Specification	QQ-P-35	ASTM B488
Coupling Nut Material and Plating	Steel, Passivated	Steel, Passivated
Coupling Nut Plating Specification	QQ-P-35	AMS-QQ-P-35
Seal Gasket Material	Silicone Rubber	Silicone Rubber
Contact Gage Specification	0 in min	0 in min
Insulator Gage Specification	0 in min	0 in min

Mechanical Specification Notes:

**Environmental Specifications**

Description	Specification
Temperature Operating Range	-30 to +85 deg C

SMA Male to RA SMA Male MIL-DTL-17 Cable  
M17/183-00001 Coax in 72 Inch



**FMHR0120-72**

**Compliance Certifications** (see [product page](#) for current document)

**Process Specifications**

Process	Specification
Soldering	in accordance with J-STD-001, class 3
Crimping	dies in accordance with SAE AS22520
Marking	shall meet the adherence requirements of SAE AS5942
Workmanship	shall be in accordance with IPC/WHMA-A-620, class 3

**Tests and Inspections**

Description	Sampling
Connector Gaging (pin and insulator position)	100%
Insertion Loss	100%
VSWR	100%
Dielectric Withstanding Voltage (DWV)	100%
Visual - workmanship, configuration and marking	100%
Length	C=0, 1.5 AQL
Mass	C=0, 1.5 AQL

**Plotted and Other Data**

Notes:  
Values at 25°C, sea level.

SMA Male to RA SMA Male MIL-DTL-17 Cable  
M17/183-00001 Coax in 72 Inch



**FMHR0120-72**

**How to Order**

Part Number Configuration:

**FMHR0120 - xx uu**



Example: FMHR0120-12 = 12 inches long cable  
FMHR0120-100cm = 100 cm long cable

Cable Assembly Length Tolerances:

Imperial English		Metric	
"L" ≤ 1 ft	+0.5 in / -0 in	"L" ≤ 0.3 m	+12.5 mm / -0 mm
1 ft < "L" ≤ 5 ft	+1 in / -0 in	0.3 m < "L" ≤ 1.5 m	+25 mm / -0 mm
5 ft < "L" ≤ 10 ft	+2 in / -0 in	1.5 m < "L" ≤ 3 m	+50 mm / -0 mm
10 ft < "L" ≤ 25 ft	+3 in / -0 in	3 m < "L" ≤ 7.5 m	+75 mm / -0 mm
25 ft < "L"	+2%"L" / -0%"L"	7.5 m < "L"	+2%"L" / -0%"L"

\* Cable Length = "L"

SMA Male to RA SMA Male MIL-DTL-17 Cable M17/183-00001 Coax in 72 Inch from Fairview Microwave is in-stock and available to ship same-day. All of our RF/microwave products are available off-the-shelf from our ISO 9001:2008 certified facilities in Lewisville, Texas. Fairview Microwave is RF on-demand.

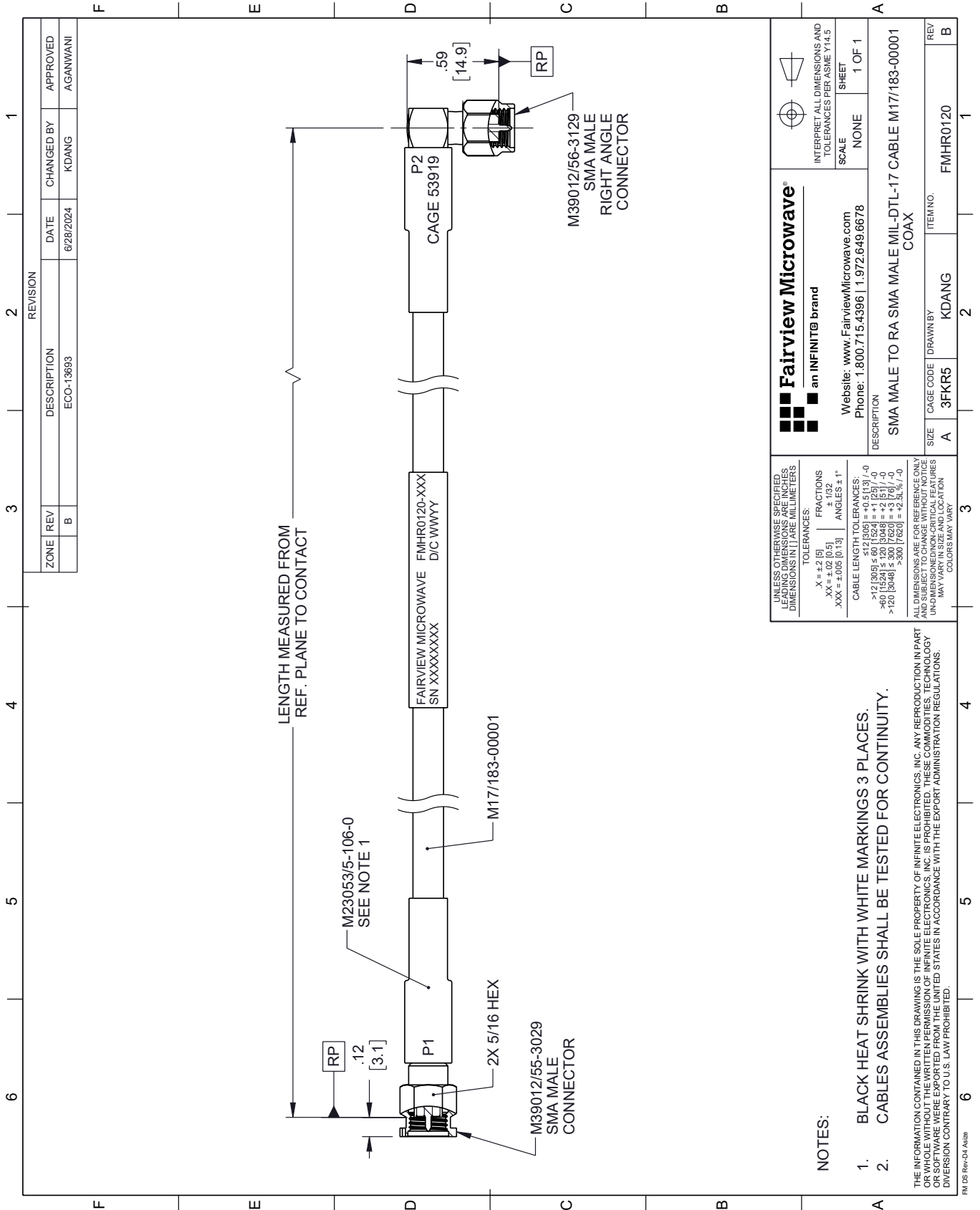
For additional information on this product, please click the following link: [SMA Male to RA SMA Male MIL-DTL-17 Cable M17/183-00001 Coax in 72 Inch FMHR0120-72](#)

URL: <https://www.fairviewmicrowave.com/sma-male-ra-sma-male-cable-m17-183-00001-coax-fmhr0120-72-p.aspx>

The information contained within this document is accurate to the best of our knowledge and representative of the part described herein. It may be necessary to make modifications to the part and/or the documentation of the part in order to implement improvements. Fairview Microwave reserves the right to make such changes as required. Unless otherwise stated, all specifications are nominal. Fairview Microwave does not make any representation or warranty regarding the suitability of the part described herein for any particular purpose, and Fairview Microwave does not assume liability arising out of the use of any part or document.

# FMHR0120-72 CAD Drawing

SMA Male to RA SMA Male MIL-DTL-17 Cable M17/183-00001 Coax in 72 Inch



REVISION		DATE	CHANGED BY	APPROVED		
ZONE	REV	DESCRIPTION	ECO-13683	6/28/2024	KDANG	AGANWANI
	B					

 <b>Fairview Microwave®</b> an INFINITI® brand Website: <a href="http://www.FairviewMicrowave.com">www.FairviewMicrowave.com</a> Phone: 1.800.715.4396   1.972.649.6678		INTERPRET ALL DIMENSIONS AND TOLERANCES PER ASME Y14.5 SCALE NONE SHEET 1 OF 1
DESCRIPTION <b>SMA MALE TO RA SMA MALE MIL-DTL-17 CABLE M17/183-00001 COAX</b>		
SIZE	CAGE CODE	ITEM NO.
A	3FKR5	KDANG

UNLESS OTHERWISE SPECIFIED, LEADING DIMENSIONS ARE IN INCHES, DIMENSIONS IN [ ] ARE MILLIMETERS.

TOLERANCES:  
 .X = ±.2 (5)      FRACTIONS ± 1/32  
 .XX = ±.02 (0.5)      ANGLES ± 1°  
 .XXX = ±.005 (0.13)

CABLE LENGTH TOLERANCES:  
 >12 (305) ≤ 60 (1524) = +0.15 (3) / -0  
 >60 (1524) ≤ 120 (3048) = +.2 (5) / -0  
 >120 (3048) ≤ 300 (7620) = +.25 (6) / -0

ALL DIMENSIONS ARE FOR REFERENCE ONLY. UNDIMENSIONED/NON-CRITICAL FEATURES MAY VARY IN SIZE AND LOCATION. COLORS MAY VARY.

NOTES:  
 1. BLACK HEAT SHRINK WITH WHITE MARKINGS 3 PLACES.  
 2. CABLE ASSEMBLIES SHALL BE TESTED FOR CONTINUITY.

THE INFORMATION CONTAINED IN THIS DRAWING IS THE SOLE PROPERTY OF INFINITE ELECTRONICS, INC. ANY REPRODUCTION IN PART OR WHOLE WITHOUT THE WRITTEN PERMISSION OF INFINITE ELECTRONICS, INC. IS PROHIBITED. THESE COMMODITIES, TECHNOLOGY OR SOFTWARE WERE EXPORTED FROM THE UNITED STATES IN ACCORDANCE WITH THE EXPORT ADMINISTRATION REGULATIONS. DIVERSION CONTRARY TO U.S. LAW PROHIBITED.

FM DS Rev-D4 Alt2b