

Super SMA Female (Jack) Connector Solder Attachment 0.031 inch End Launch PCB, 0.020 inch Pin Diameter, Up to 26.5 GHz



FMCN5379

Configuration

- SMA Female Connector
- 50 Ohms
- Straight Body Geometry
- Connector Interface Types: End Launch

Features

- Operating Frequency of 26.5 GHz Max.
- Good VSWR of 1.3:1
- Gold Plated Beryllium Copper Contact

Applications

- General Purpose Test
- PCB Applications

Description

Super SMA Female (Jack) End Launch PCB Connector, part number FMCN5379, from Fairview Microwave is in-stock and ships same day. This SMA female connector operates up to a maximum frequency of 26.5 GHz and offers good VSWR of 1.3:1.

Fairview's SMA female connector FMCN5379 datasheet specifications and outline drawing are shown in this PDF below. Our extensive offering of RF, microwave and millimeter wave connectors allows designers to configure and customize their signal connections however they like. From providing an I/O for a board design to creating a custom cable assembly configuration, Fairview Microwave has a connector solution to meet your needs. Fairview Microwave also has the expertise to build your custom cable assemblies for you and ship them same-day.

Electrical Specifications

Description	Minimum	Typical	Maximum	Units
Frequency Range	DC		26.5	GHz
VSWR		1.2:1	1.3:1	
Impedance		50		Ohms

Mechanical Specifications

Size

Length	0.49 in [12.45 mm]
Width	0.291 in [7.39 mm]
Height	0.236 in [5.99 mm]
Weight	0.0034 lbs [1.54 g]
Mating Cycles	500 Cycles

Material Specifications

Description	Material	Plating
Contact	Beryllium Copper	Gold
Insulation	PTFE	
Body	Brass	Gold

Super SMA Female (Jack) Connector Solder Attachment 0.031 inch End Launch PCB, 0.020 inch Pin Diameter, Up to 26.5 GHz



FMCN5379

Environmental Specifications

Temperature

Operating Range

-40 to +125 deg C

Compliance Certifications (see [product page](#) for current document)

Plotted and Other Data

Notes:

Super SMA Female (Jack) Connector Solder Attachment 0.031 inch End Launch PCB, 0.020 inch Pin Diameter, Up to 26.5 GHz from Fairview Microwave is in-stock and available to ship same-day. All of our RF/microwave products are available off-the-shelf from our ISO 9001:2008 certified facilities in Lewisville, Texas. Fairview Microwave is RF on-demand.

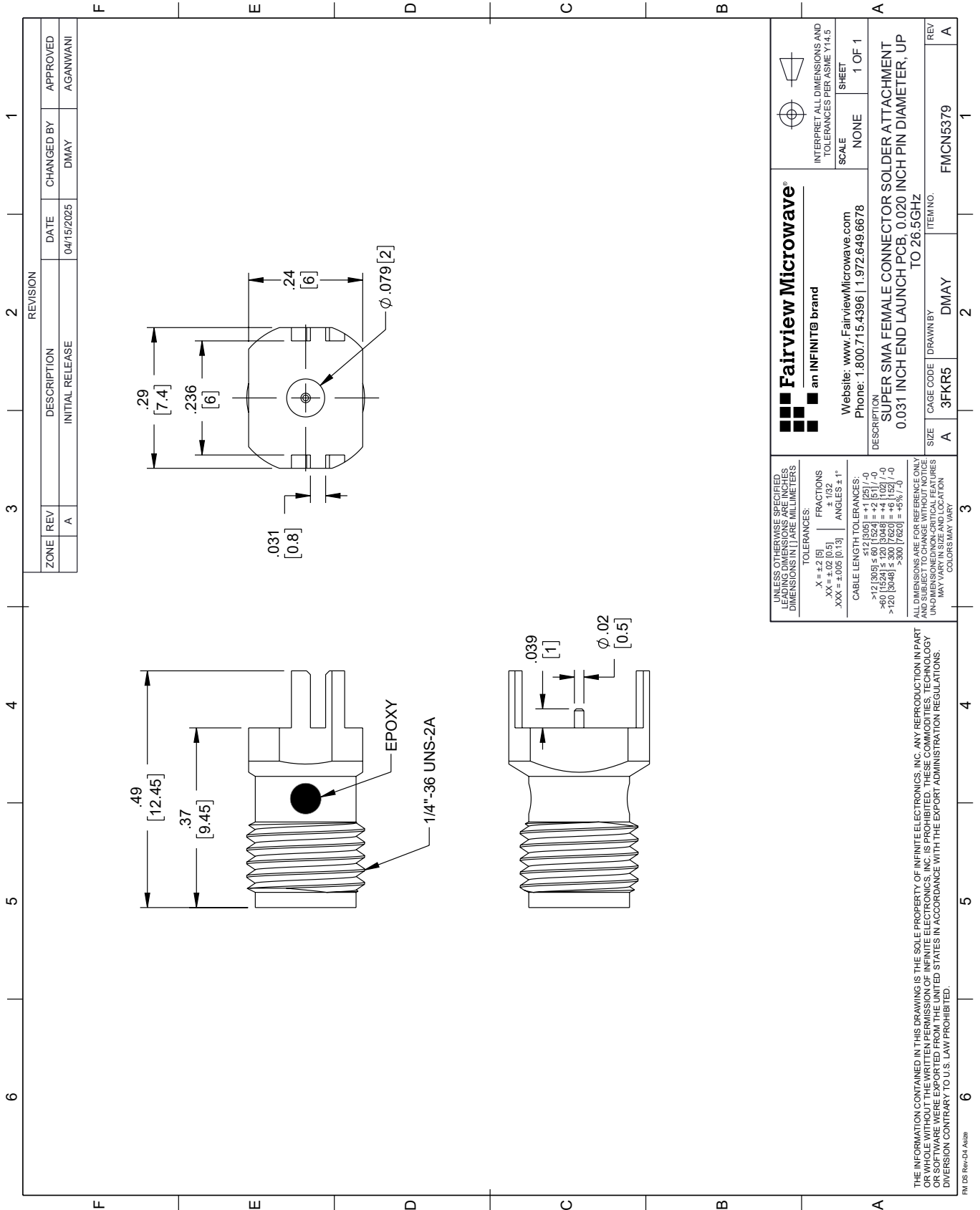
For additional information on this product, please click the following link: [Super SMA Female \(Jack\) Connector Solder Attachment 0.031 inch End Launch PCB, 0.020 inch Pin Diameter, Up to 26.5 GHz FMCN5379](#)

URL: <https://www.fairviewmicrowave.com/product/rf-connectors/sma-female-end-launch-pcb-connector-fmcn5379.html>

The information contained within this document is accurate to the best of our knowledge and representative of the part described herein. It may be necessary to make modifications to the part and/or the documentation of the part in order to implement improvements. Fairview Microwave reserves the right to make such changes as required. Unless otherwise stated, all specifications are nominal. Fairview Microwave does not make any representation or warranty regarding the suitability of the part described herein for any particular purpose, and Fairview Microwave does not assume liability arising out of the use of any part or document.

FMCN5379 CAD Drawing

Super SMA Female (Jack) Connector Solder Attachment 0.031 inch End Launch PCB, 0.020 inch Pin Diameter, Up to 26.5 GHz



ZONE	REV	DESCRIPTION	DATE	CHANGED BY	APPROVED
	A	INITIAL RELEASE	04/15/2025	DMAY	AGANWANI

Fairview Microwave
an INFINIT® brand

Website: www.FairviewMicrowave.com
Phone: 1.800.715.4396 | 1.972.649.6678

INTERPRET ALL DIMENSIONS AND TOLERANCES PER ASME Y14.5
SCALE: NONE SHEET: 1 OF 1

DESCRIPTION: SUPER SMA FEMALE CONNECTOR SOLDER ATTACHMENT
0.031 INCH END LAUNCH PCB, 0.020 INCH PIN DIAMETER, UP TO 26.5GHz

UNLESS OTHERWISE SPECIFIED, LEADING DIMENSIONS ARE IN INCHES, DIMENSIONS IN [] ARE MILLIMETERS.

TOLERANCES:
 .X = ±.2 [5] FRACTIONS ± 1/32
 .XX = ±.02 [0.5] ANGLES ± 1°
 .XXX = ±.005 [0.13]

CABLE LENGTH TOLERANCES:
 ≤ 12 [305] ± .60 [15.24] = ±.2 [5] / -0
 > 12 [305] ≤ 60 [1524] = ±.2 [5] / -0
 > 60 [1524] ≤ 120 [3048] = ±.4 [10.2] / -0
 > 120 [3048] ≤ 300 [7620] = ±.8 [20.3] / -0

ALL DIMENSIONS ARE FOR REFERENCE ONLY. UNDIMENSIONED NON-CRITICAL FEATURES MAY VARY IN SIZE AND LOCATION. COLORS MAY VARY.

REVISION: 1
 CAGE CODE: 3FKR5
 DRAWN BY: DMAY
 ITEM NO.: FMCN5379

THE INFORMATION CONTAINED IN THIS DRAWING IS THE SOLE PROPERTY OF INFINITE ELECTRONICS, INC. ANY REPRODUCTION IN PART OR WHOLE WITHOUT THE WRITTEN PERMISSION OF INFINITE ELECTRONICS, INC. IS PROHIBITED. THESE COMMODITIES, TECHNOLOGY OR SOFTWARE WERE EXPORTED FROM THE UNITED STATES IN ACCORDANCE WITH THE EXPORT ADMINISTRATION REGULATIONS. DIVISION CONTRARY TO U.S. LAW PROHIBITED.

PM DS Rev-D4 Alt2b