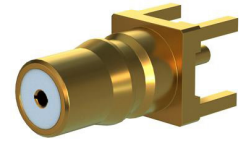


## QMA Female (Jack) PCB Connector Solder Attachment Thru Hole



### FMCN5352

#### Configuration

- QMA Female Connector
- 50 Ohms
- Thru Hole

#### Features

- Operating Frequency of 6 GHz Max.
- Excellent VSWR of 1.2:1
- Gold over Nickel Alloy over Copper Plated Beryllium Copper Contact

#### Applications

- General Purpose Test
- PCB Applications

#### Description

QMA Female Connector Solder Attachment, part number FMCN5352, from Fairview Microwave is in-stock and ships same day. This QMA female connector operates up to a maximum frequency of 6 GHz and offers excellent VSWR of 1.2:1.

Fairview's QMA female thru hole connector FMCN5352 datasheet specifications and outline drawing are shown in this PDF below. Our extensive offering of RF, microwave and millimeter wave connectors allows designers to configure and customize their signal connections however they like. From providing an I/O for a board design to creating a custom cable assembly configuration, Fairview Microwave has a connector solution to meet your needs. Fairview Microwave also has the expertise to build your custom cable assemblies for you and ship them same-day.

#### Electrical Specifications

Description	Minimum	Typical	Maximum	Units
Frequency Range	DC		6	GHz
VSWR			1.2:1	
Insertion Loss			0.122	dB
Inner Conductor DC Resistance			3	mOhms
Outer Conductor DC Resistance			2.5	mOhms
Insulation Resistance	5,000			MOhms
Impedance		50		Ohms

#### Electrical Specification Notes:

Dielectric Withstanding Voltage (at sea level) : 1000 V rms, 50Hz

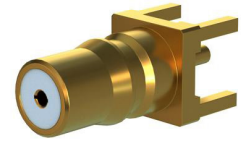
Working Voltage (at sea level) : 480 V rms, 50Hz

#### Mechanical Specifications

##### Size

Length	0.582 in [14.78 mm]
Width	0.252 in [6.4 mm]
Height	0.252 in [6.4 mm]
Weight	0.0595 lbs [26.99 g]
Mating Cycles	100 Cycles
Cable Retention Force	1.5 lbs [680.39 g]
Engagement Force	5.6lbs [2.54kg]
Disengagement Force	4.5lbs [2.04kg]

QMA Female (Jack) PCB Connector  
Solder Attachment Thru Hole



**FMCN5352**

**Material Specifications**

Description	Material	Plating
Contact	Beryllium Copper	Gold over Nickel Alloy over Copper
Insulation	PTFE	
Body	Brass	Gold over Nickel Alloy over Copper

**Environmental Specifications**

**Temperature**

Operating Range	-40 to +85 deg C
Thermal Shock	IEC 60169-1 16.4 (-40°C to +85°C)
Salt Spray	IEC 60169-1 16.7 (48hrs)

**Compliance Certifications** (see [product page](#) for current document)

**Plotted and Other Data**

Notes:

QMA Female (Jack) PCB Connector Solder Attachment Thru Hole from Fairview Microwave is in-stock and available to ship same-day. All of our RF/microwave products are available off-the-shelf from our ISO 9001:2008 certified facilities in Lewisville, Texas. Fairview Microwave is RF on-demand.

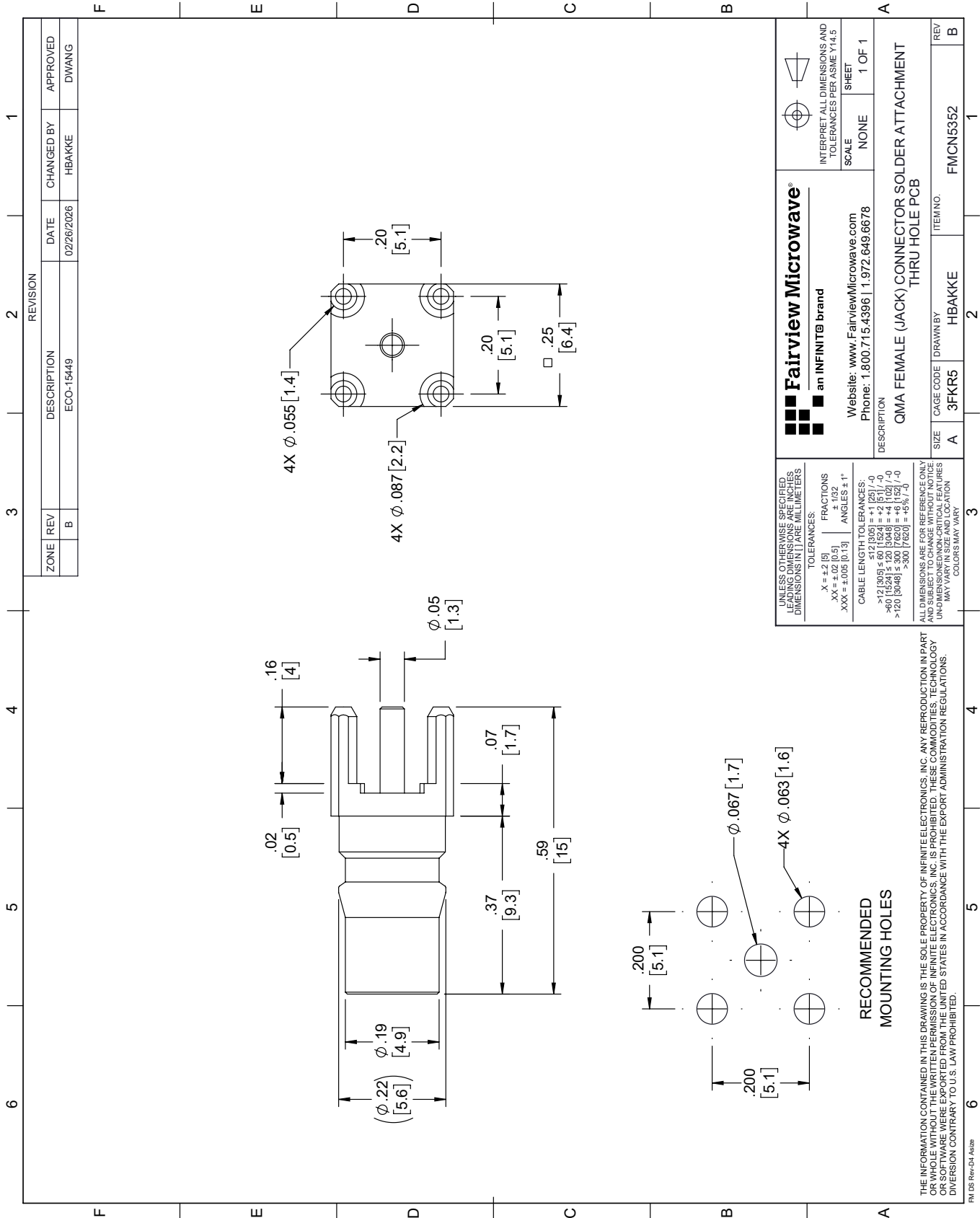
For additional information on this product, please click the following link: [QMA Female \(Jack\) PCB Connector Solder Attachment Thru Hole FMCN5352](#)

URL: <https://www.fairviewmicrowave.com/product/rf-connectors/qma-female-connector-fmcn5352>

The information contained within this document is accurate to the best of our knowledge and representative of the part described herein. It may be necessary to make modifications to the part and/or the documentation of the part in order to implement improvements. Fairview Microwave reserves the right to make such changes as required. Unless otherwise stated, all specifications are nominal. Fairview Microwave does not make any representation or warranty regarding the suitability of the part described herein for any particular purpose, and Fairview Microwave does not assume liability arising out of the use of any part or document.

# FMCN5352 CAD Drawing

QMA Female (Jack) PCB Connector Solder Attachment Thru Hole



ZONE	REV	DESCRIPTION	DATE	CHANGED BY	APPROVED
B		ECO-15449	02/26/2026	HBAKKE	DWANG

**Fairview Microwave**  
an INFINITI® brand

Website: [www.FairviewMicrowave.com](http://www.FairviewMicrowave.com)  
Phone: 1.800.715.4396 | 1.972.649.6678

SCALE: NONE  
SHEET: 1 OF 1

INTERPRET ALL DIMENSIONS AND TOLERANCES PER ASME Y14.5

DESCRIPTION: QMA FEMALE (JACK) CONNECTOR SOLDER ATTACHMENT THRU HOLE PCB

SIZE: A  
CAGE CODE: 3FKR5  
DRAWN BY: HBAKKE  
ITEM NO.: FMCN5352

REV: B

UNLESS OTHERWISE SPECIFIED, DIMENSIONS ARE IN INCHES. DIMENSIONS IN [ ] ARE MILLIMETERS.

TOLERANCES:

X = ±.2 [5] FRACTIONS ±.132

.XX = ±.02 [0.5] ANGLES ± 1°

.XXX = ±.005 [0.13]

CABLE LENGTH TOLERANCES:

< 12 [305] ≤ 60 [1524] = +.1 [25] / -0

> 60 [1524] ≤ 120 [3048] = +.4 [102] / -0

> 120 [3048] ≤ 300 [7620] = +.5 [12.7] / -0

> 300 [7620] = +.5 [12.7] / -0

ALL DIMENSIONS ARE FOR REFERENCE ONLY. UNLESS OTHERWISE SPECIFIED, DIMENSIONS ARE IN INCHES. DIMENSIONS IN [ ] ARE MILLIMETERS. DIMENSIONS ON NON-CRITICAL FEATURES MAY VARY IN SIZE AND LOCATION. COLORS MAY VARY.

THE INFORMATION CONTAINED IN THIS DRAWING IS THE SOLE PROPERTY OF INFINITE ELECTRONICS, INC. ANY REPRODUCTION IN PART OR WHOLE WITHOUT THE WRITTEN PERMISSION OF INFINITE ELECTRONICS, INC. IS PROHIBITED. THESE COMMODITIES, TECHNOLOGY OR SOFTWARE WERE EXPORTED FROM THE UNITED STATES IN ACCORDANCE WITH THE EXPORT ADMINISTRATION REGULATIONS. DIVISION CONTRARY TO U.S. LAW PROHIBITED.

FM DS Rev-D4 Alt26