

SMA Female Commercial Grade PCB Connector
End Launch Clamp/Solder Attachment 4 Hole
Flange Removable End Launch



FMCN5222

Configuration

- SMA Female Connector
- 50 Ohms
- Straight Body Geometry
- Connector Interface Types: End Launch
- 4 Hole Flange
- Commercial Grade Design

Features

- Operating Frequency of 18 GHz Max.
- Gold Plated Beryllium Copper Contact

Applications

- General Purpose Test
- Rack and Panel Mount Applications
- PCB Applications

Description

SMA Female 4 hole Flange Mount Commercial Grade 4 hole Flange Mount Connector Clamp/Solder Attachment for End Launch Cable, part number FMCN5222, from Fairview Microwave is in-stock and ships same day. This SMA female connector operates up to a maximum frequency of 18 GHz. Fairview's FMCN5222 4 hole flange SMA connector enables designers to make external connections on product enclosures, and can be used in a variety of other rack mount and panel mount applications.

Fairview's SMA female 4 hole flange connector FMCN5222 datasheet specifications and outline drawing are shown in this PDF below. Our extensive offering of RF, microwave and millimeter wave connectors allows designers to configure and customize their signal connections however they like. From providing an I/O for a board design to creating a custom cable assembly configuration, Fairview Microwave has a connector solution to meet your needs. Fairview Microwave also has the expertise to build your custom cable assemblies for you and ship them same-day.

Electrical Specifications

Description	Minimum	Typical	Maximum	Units
Frequency Range	DC		18	GHz
Dielectric Withstanding Voltage (AC)			1,000	Vrms
Inner Conductor DC Resistance			6	mOhms
Outer Conductor DC Resistance			2.5	mOhms
Insulation Resistance	1,000			MOhms
Impedance		50		Ohms

Mechanical Specifications

Size

- Length 0.55 in [13.97 mm]
- Width 0.5 in [12.7 mm]
- Height 0.5 in [12.7 mm]
- Weight 0.00657 lbs [2.98 g]

SMA Female Commercial Grade PCB Connector
End Launch Clamp/Solder Attachment 4 Hole
Flange Removable End Launch



FMCN5222

Material Specifications

Description	Material	Plating
Contact	Beryllium Copper	Gold
Insulation	PTFE	
Outer Conductor	Brass	Nickel
Body	Brass	Gold

Environmental Specifications

Temperature

Operating Range -65 to +165 deg C

Compliance Certifications (see [product page](#) for current document)

Plotted and Other Data

Notes:

SMA Female Commercial Grade PCB Connector End Launch Clamp/Solder Attachment 4 Hole Flange Removable End Launch from Fairview Microwave is in-stock and available to ship same-day. All of our RF/microwave products are available off-the-shelf from our ISO 9001:2008 certified facilities in Lewisville, Texas. Fairview Microwave is RF on-demand.

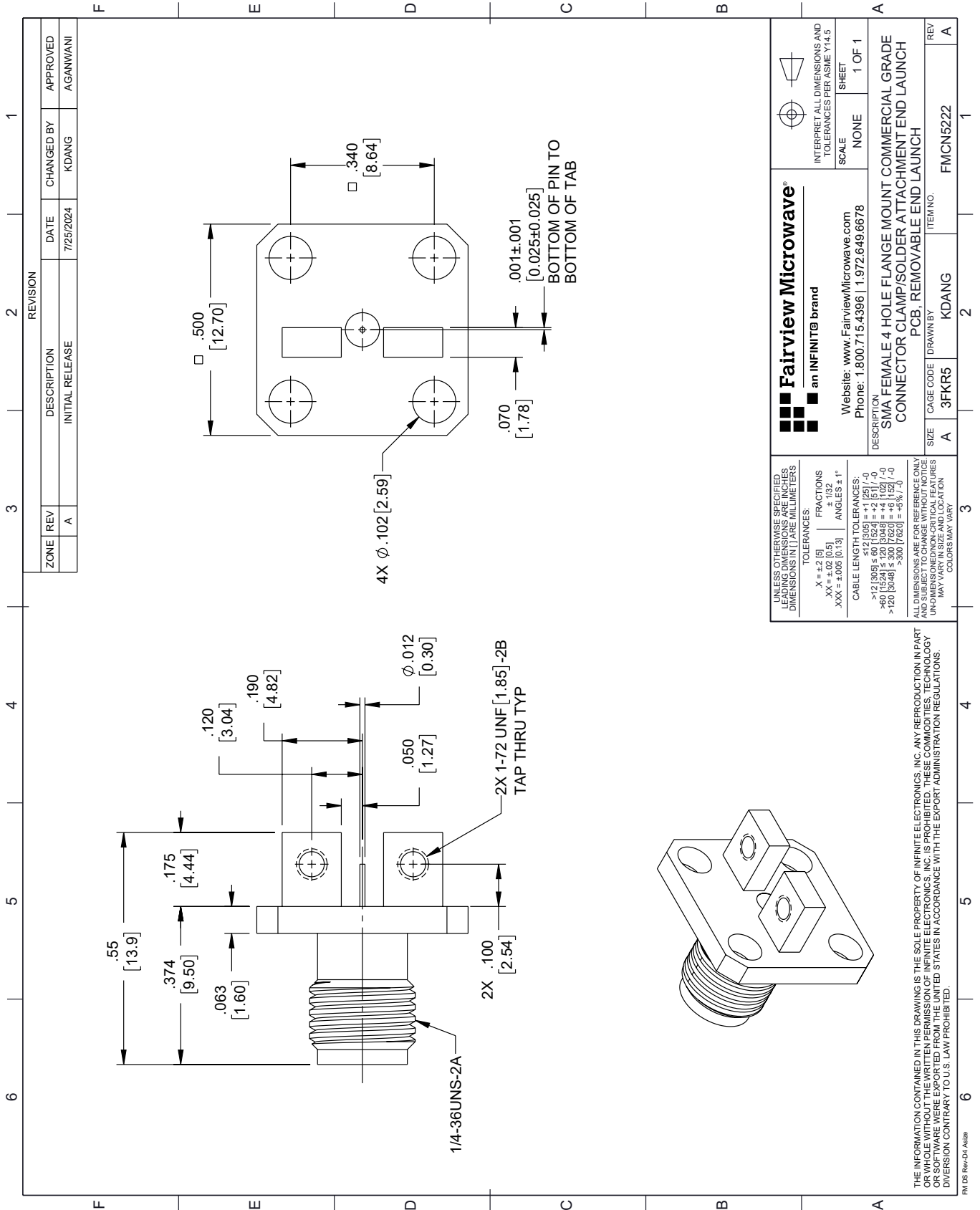
For additional information on this product, please click the following link: [SMA Female Commercial Grade PCB Connector End Launch Clamp/Solder Attachment 4 Hole Flange Removable End Launch FMCN5222](#)

URL: <https://www.fairviewmicrowave.com/sma-female-end-launch-pcb-connector-fmcn5222-p.aspx>

The information contained within this document is accurate to the best of our knowledge and representative of the part described herein. It may be necessary to make modifications to the part and/or the documentation of the part in order to implement improvements. Fairview Microwave reserves the right to make such changes as required. Unless otherwise stated, all specifications are nominal. Fairview Microwave does not make any representation or warranty regarding the suitability of the part described herein for any particular purpose, and Fairview Microwave does not assume liability arising out of the use of any part or document.

FMCN5222 CAD Drawing

SMA Female Commercial Grade PCB Connector End Launch Clamp/
Solder Attachment 4 Hole Flange Removable End Launch



REVISION		DATE	CHANGED BY	APPROVED	
ZONE	REV	DESCRIPTION	DATE	CHANGED BY	APPROVED
	A	INITIAL RELEASE	7/25/2024	KDANG	AGANWANI

Fairview Microwave
an INFINITI® brand

Website: www.FairviewMicrowave.com
Phone: 1.800.715.4396 | 1.972.649.6678

INTERPRET ALL DIMENSIONS AND TOLERANCES PER ASME Y14.5

SCALE: NONE SHEET: 1 OF 1

DESCRIPTION: SMA FEMALE 4 HOLE FLANGE MOUNT COMMERCIAL GRADE CONNECTOR CLAMP/SOLDER ATTACHMENT END LAUNCH

SIZE: A CAGE CODE: 3FKR5 DRAWN BY: KDANG ITEM NO.: FMCN5222

REV: A

UNLESS OTHERWISE SPECIFIED, LEADING DIMENSIONS ARE IN INCHES. DIMENSIONS IN [] ARE MILLIMETERS.

TOLERANCES:
 .X = ±.2 [5] FRACTIONS ±.132
 .XX = ±.02 [0.5] ±.102
 .XXX = ±.005 [0.13] ±.051

ANGLES ± 1°

CABLE LENGTH TOLERANCES:
 ≤ 12 [305] ≤ 60 [1524] = +.1 [25] / -0
 > 60 [1524] ≤ 120 [3048] = +.4 [102] / -0
 > 120 [3048] ≤ 300 [7620] = +.8 [20] / -0

ALL DIMENSIONS ARE FOR REFERENCE ONLY. UNDIMENSIONED/UNCLEAR FEATURES MAY VARY IN SIZE AND LOCATION. COLORS MAY VARY.

THE INFORMATION CONTAINED IN THIS DRAWING IS THE SOLE PROPERTY OF INFINITE ELECTRONICS, INC. ANY REPRODUCTION IN PART OR WHOLE WITHOUT THE WRITTEN PERMISSION OF INFINITE ELECTRONICS, INC. IS PROHIBITED. THESE COMMODITIES, TECHNOLOGY OR SOFTWARE WERE EXPORTED FROM THE UNITED STATES IN ACCORDANCE WITH THE EXPORT ADMINISTRATION REGULATIONS. DIVISION CONTRARY TO U.S. LAW PROHIBITED.

FM DS Rev-D4 Alt2