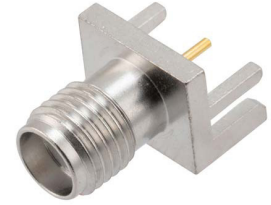


## SMA Female Commercial Grade PCB Connector .063 inch End Launch Solder Attachment Tri-Metal Finish



### FMCN5205

#### Configuration

- SMA Female Connector
- 50 Ohms
- Straight Body Geometry
- Connector Interface Types: .063 inch End Launch
- Commercial Grade Design

#### Features

- Operating Frequency of 18 GHz Max.
- Gold Plated Beryllium Copper Contact

#### Applications

- General Purpose Test
- PCB Applications

#### Description

SMA Female Commercial Grade Connector Solder Attachment for .063 inch End Launch Cable, part number FMCN5205, from Fairview Microwave is in-stock and ships same day. This SMA female connector operates up to a maximum frequency of 18 GHz.

Fairview's SMA female connector FMCN5205 datasheet specifications and outline drawing are shown in this PDF below. Our extensive offering of RF, microwave and millimeter wave connectors allows designers to configure and customize their signal connections however they like. From providing an I/O for a board design to creating a custom cable assembly configuration, Fairview Microwave has a connector solution to meet your needs. Fairview Microwave also has the expertise to build your custom cable assemblies for you and ship them same-day.

#### Electrical Specifications

Description	Minimum	Typical	Maximum	Units
Frequency Range	DC		18	GHz
Operating Voltage (AC)			1,000	Vrms
Insulation Resistance	5,000			MOhms
Impedance		50		Ohms

#### Mechanical Specifications

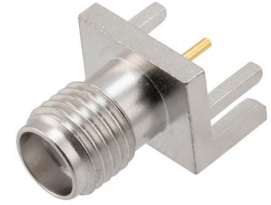
##### Size

Length	0.56 in [14.22 mm]
Width	0.31 in [7.87 mm]
Height	0.38 in [9.65 mm]
Weight	0.00476 lbs [2.16 g]
Mating Cycles	500 Cycles
Mating Torque	7 to 10 in-lbs [[0.79 to 1.13 Nm]]

#### Material Specifications

Description	Material	Plating
Contact	Beryllium Copper	Gold
Insulation	PTFE	
Body	Brass	Tri-Metal

## SMA Female Commercial Grade PCB Connector .063 inch End Launch Solder Attachment Tri-Metal Finish



### FMCN5205

---

#### Environmental Specifications

##### Temperature

Operating Range

-65 to +165 deg C

**Compliance Certifications** (see [product page](#) for current document)

#### Plotted and Other Data

Notes:

SMA Female Commercial Grade PCB Connector .063 inch End Launch Solder Attachment Tri-Metal Finish from Fairview Microwave is in-stock and available to ship same-day. All of our RF/microwave products are available off-the-shelf from our ISO 9001:2008 certified facilities in Lewisville, Texas. Fairview Microwave is RF on-demand.

For additional information on this product, please click the following link: [SMA Female Commercial Grade PCB Connector .063 inch End Launch Solder Attachment Tri-Metal Finish FMCN5205](#)

URL: <https://www.fairviewmicrowave.com/sma-female-.063-end-launch-pcb-connector-fmcn5205-p.aspx>

The information contained within this document is accurate to the best of our knowledge and representative of the part described herein. It may be necessary to make modifications to the part and/or the documentation of the part in order to implement improvements. Fairview Microwave reserves the right to make such changes as required. Unless otherwise stated, all specifications are nominal. Fairview Microwave does not make any representation or warranty regarding the suitability of the part described herein for any particular purpose, and Fairview Microwave does not assume liability arising out of the use of any part or document.

