

## MCX Plug Right Angle to SMP Plug Right Angle using RG316 Coax Cable 48 Inches

### FMCA9847-48

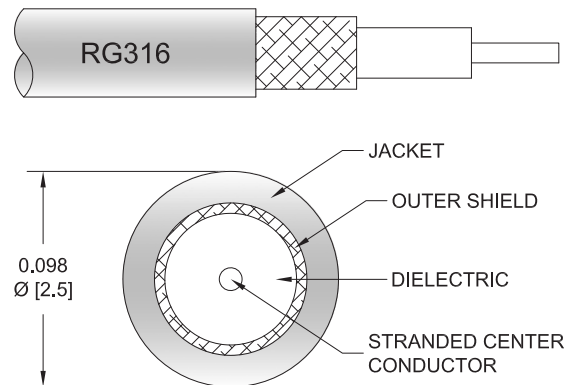


#### Configuration

- Connector 1: MCX Plug
- Connector 2: SMP Plug Right Angle
- Cable Type: RG316

#### Features

- Max Frequency 3 GHz
- 69% Phase Velocity
- VSWR of 1.4:1



#### Applications

- General Purpose
- Laboratory Use
- Military
- Aerospace
- Wireless Communications
- General Purpose Test

#### Description

The MCX plug to RA SMP plug 48 inch cable using RG316, part number FMCA9847-48, from Fairview Microwave is in-stock and ships same day. This Fairview MCX to SMP cable assembly has a plug to plug gender configuration with 50 ohm RG316. The FMCA9847-48 MCX plug to SMP plug cable assembly operates to 3 GHz. The right angle SMP interface on the RG316 cable allows for easier connections in tight spaces.

Custom versions of most RF cable assemblies can be built and shipped same day. Custom cable assembly lengths can be obtained by specifying the desired length on the web site at time of order or by contacting a sales representative. Other RF cable assembly value added services including connector orientation or clocking, heat shrink booting and labeling are also available. RF testing can also be performed to document the electrical performance of your cable assembly.

#### Electrical Specifications

Description	Minimum	Typical	Maximum	Units
Frequency Range	DC		3	GHz
VSWR			1.4:1	
Velocity of Propagation		69		%
Capacitance		29.4 [96.46]		pF/ft [pF/m]

#### Specifications by Frequency

Description	F1	F2	F3	F4	F5	Units
Frequency	0.1	0.25	0.5	1	3	GHz
Insertion Loss (Typ.)	0.74	0.94	1.26	1.82	2.62	dB

Electrical Specification Notes:

Insertion Loss does not include the loss of the connectors. Insertion Loss is estimated as 0.2 dB per connector

MCX Plug Right Angle to SMP Plug Right Angle  
using RG316 Coax Cable 48 Inches



**FMCA9847-48**

**Mechanical Specifications**

**Cable Assembly**

Length	48 in [121.92 cm]
Width/Diameter	0.5 in [12.7 mm]
Weight	0.03 lbs [13.61 g]

**Cable**

Cable Type	RG316
Impedance	50 Ohms
Inner Conductor Type	Stranded
Inner Conductor Material and Plating	Copper Clad Steel, Silver
Dielectric Type	PTFE

**Connectors**

Description	Connector 1	Connector 2
Type	MCX Plug	SMP Plug Right Angle
Impedance	50 Ohms	50 Ohms
Configuration	Straight	Right Angle
Contact Material and Plating	Bronze, Gold over Copper	Beryllium Copper, Gold over Copper
Body Material and Plating	Bronze, Copper-Tin-Zinc Alloy	Bronze, Copper-Tin-Zinc Alloy

**Environmental Specifications**

**Compliance Certifications** (see [product page](#) for current document)

**Plotted and Other Data**

Notes:  
Values at 25°C, sea level.

MCX Plug Right Angle to SMP Plug Right Angle  
using RG316 Coax Cable 48 Inches

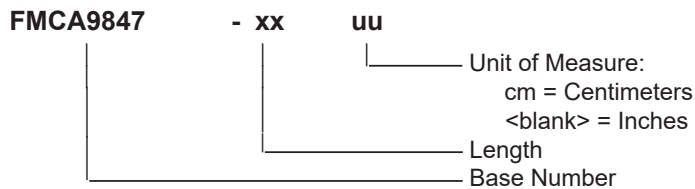


**FMCA9847-48**

**Typical Performance Data**

**How to Order**

Part Number Configuration:



Example: FMCA9847-12 = 12 inches long cable  
FMCA9847-100cm = 100 cm long cable

MCX Plug Right Angle to SMP Plug Right Angle using RG316 Coax Cable 48 Inches from Fairview Microwave is in-stock and available to ship same-day. All of our RF/microwave products are available off-the-shelf from our ISO 9001:2008 certified facilities in Lewisville, Texas. Fairview Microwave is RF on-demand.

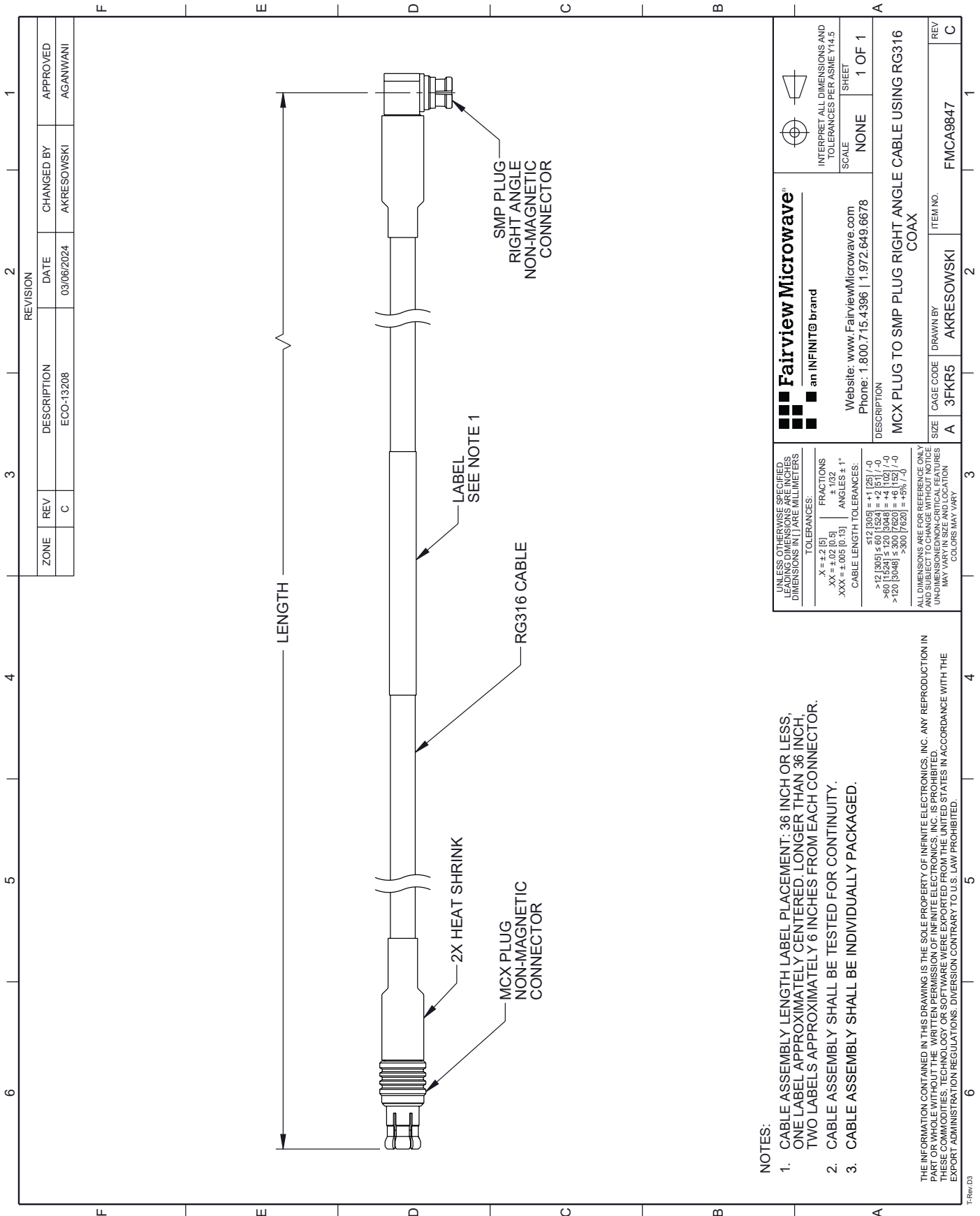
For additional information on this product, please click the following link: [MCX Plug Right Angle to SMP Plug Right Angle using RG316 Coax Cable 48 Inches FMCA9847-48](#)

URL: <https://www.fairviewmicrowave.com/non-magnetic-mcx-plug-to-ra-smp-plug-cable-rg316-coax-in-48-inch-fm-ca9847-48-p.aspx>

The information contained within this document is accurate to the best of our knowledge and representative of the part described herein. It may be necessary to make modifications to the part and/or the documentation of the part in order to implement improvements. Fairview Microwave reserves the right to make such changes as required. Unless otherwise stated, all specifications are nominal. Fairview Microwave does not make any representation or warranty regarding the suitability of the part described herein for any particular purpose, and Fairview Microwave does not assume liability arising out of the use of any part or document.

# FMCA9847-48 CAD Drawing

MCX Plug Right Angle to SMP Plug Right Angle using RG316 Coax Cable 48 Inches



**NOTES:**

1. CABLE ASSEMBLY LENGTH LABEL PLACEMENT: 36 INCH OR LESS, ONE LABEL APPROXIMATELY CENTERED, LONGER THAN 36 INCH, TWO LABELS APPROXIMATELY 6 INCHES FROM EACH CONNECTOR.
2. CABLE ASSEMBLY SHALL BE TESTED FOR CONTINUITY.
3. CABLE ASSEMBLY SHALL BE INDIVIDUALLY PACKAGED.

THE INFORMATION CONTAINED IN THIS DRAWING IS THE SOLE PROPERTY OF INFINITE ELECTRONICS, INC. ANY REPRODUCTION IN PART OR WHOLE WITHOUT THE WRITTEN PERMISSION OF INFINITE ELECTRONICS, INC. IS PROHIBITED. THESE COMMODITIES, TECHNOLOGY OR SOFTWARE WERE EXPORTED FROM THE UNITED STATES IN ACCORDANCE WITH THE EXPORT ADMINISTRATION REGULATIONS. DIVERSION CONTRARY TO U.S. LAW PROHIBITED.

UNLESS OTHERWISE SPECIFIED, LEADING DIMENSIONS ARE INCHES, DIMENSIONS IN [ ] ARE MILLIMETERS	TOLERANCES: X = ±.2 [5] .XX = ±.02 [0.5] .XXX = ±.005 [0.13]	FRACTIONS ± 1/32	ANGLES ± 1°
CABLE LENGTH TOLERANCES: <12 [305] ≤ 60 [1524] = +1 [25] / -0 >60 [1524] ≤ 120 [3048] = +4 [102] / -0 >120 [3048] ≤ 300 [7620] = +6 [152] / -0 >300 [7620] = +9% [-7.0]	ALL DIMENSIONS ARE FOR REFERENCE ONLY AND SUBJECT TO CHANGE WITHOUT NOTICE UNLESS OTHERWISE SPECIFIED. DIMENSIONS MAY VARY IN SIZE AND LOCATION. COLORS MAY VARY.		

**Fairview Microwave**  
an INFINIT@ brand

Website: [www.FairviewMicrowave.com](http://www.FairviewMicrowave.com)  
Phone: 1.800.715.4396 | 1.972.649.6678

INTERPRET ALL DIMENSIONS AND TOLERANCES PER ASME Y14.5

SCALE: NONE

SHEET: 1 OF 1

DESCRIPTION MCX PLUG TO SMP PLUG RIGHT ANGLE CABLE USING RG316 COAX		ITEM NO.	REV
SIZE A	CAGE CODE 3FKR5	DRAWN BY AKRESOWSKI	1
		ITEM NO. FMCA9847	C

TRev\_03