

MMCX Plug Right Angle to MMCX Plug Right Angle using RG178 Coax Cable (Bronze Contact) in 24 Inches



FMCA9839-24

Configuration

- Connector 1: MMCX Plug Right Angle
- Connector 2: MMCX Plug Right Angle
- Cable Type: RG178

Features

- Max Frequency 3 GHz
- 70% Phase Velocity
- VSWR of 1.4:1

Applications

- General Purpose
- Laboratory Use
- Military
- Aerospace
- Wireless Communications
- General Purpose Test

Description

The RA MMCX plug to RA MMCX plug 24 inch cable using RG178, part number FMCA9839-24, from Fairview Microwave is in-stock and ships same day. This Fairview MMCX to MMCX cable assembly has a plug to plug gender configuration with 50 ohm RG178. The FMCA9839-24 MMCX plug to MMCX plug cable assembly operates to 3 GHz. The right angle MMCX interfaces on the RG178 cable allow for easier connections in tight spaces.

Custom versions of most RF cable assemblies can be built and shipped same day. Custom cable assembly lengths can be obtained by specifying the desired length on the web site at time of order or by contacting a sales representative. Other RF cable assembly value added services including connector orientation or clocking, heat shrink booting and labeling are also available. RF testing can also be performed to document the electrical performance of your cable assembly.

Electrical Specifications

Description	Minimum	Typical	Maximum	Units
Frequency Range	DC		3	GHz
VSWR			1.4:1	
Velocity of Propagation		70		%
Capacitance		29.4 [96.46]		pF/ft [pF/m]

Specifications by Frequency

Description	F1	F2	F3	F4	F5	Units
Frequency	0.1	0.25	0.5	1	3	GHz
Insertion Loss (Typ.)	0.66	0.8	1	1.2	1.86	dB

Electrical Specification Notes:

Insertion Loss does not include the loss of the connectors. Insertion Loss is estimated as 0.2 dB per connector

MMCX Plug Right Angle to MMCX Plug Right Angle using
RG178 Coax Cable (Bronze Contact) in 24 Inches



FMCA9839-24

Mechanical Specifications

Cable Assembly

Length	24 in [609.6 mm]
Width/Diameter	0.5 in [12.7 mm]
Weight	0.03 lbs [13.61 g]

Cable

Cable Type	RG178
Impedance	50 Ohms
Inner Conductor Type	Stranded
Inner Conductor Material and Plating	Copper Clad Steel, Silver
Dielectric Type	PTFE

Connectors

Description	Connector 1	Connector 2
Type	MMCX Plug Right Angle	MMCX Plug Right Angle
Impedance	50 Ohms	50 Ohms
Configuration	Right Angle	Right Angle
Contact Material and Plating	Bronze, Gold over Copper	Beryllium Copper, Gold over Copper
Body Material and Plating	Bronze, Copper-Tin-Zinc Alloy	Beryllium Copper, Copper-Tin-Zinc Alloy

Environmental Specifications

Compliance Certifications (see [product page](#) for current document)

Plotted and Other Data

Notes:
Values at 25°C, sea level.

MMCX Plug Right Angle to MMCX Plug Right Angle using
RG178 Coax Cable (Bronze Contact) in 24 Inches



FMCA9839-24

Typical Performance Data

How to Order

Part Number Configuration:

FMCA9839

- xx

uu

Unit of Measure:
cm = Centimeters
<blank> = Inches
Length
Base Number

Example: FMCA9839-12 = 12 inches long cable
FMCA9839-100cm = 100 cm long cable

MMCX Plug Right Angle to MMCX Plug Right Angle using RG178 Coax Cable (Bronze Contact) in 24 Inches from Fairview Microwave is in-stock and available to ship same-day. All of our RF/microwave products are available off-the-shelf from our ISO 9001:2008 certified facilities in Lewisville, Texas. Fairview Microwave is RF on-demand.

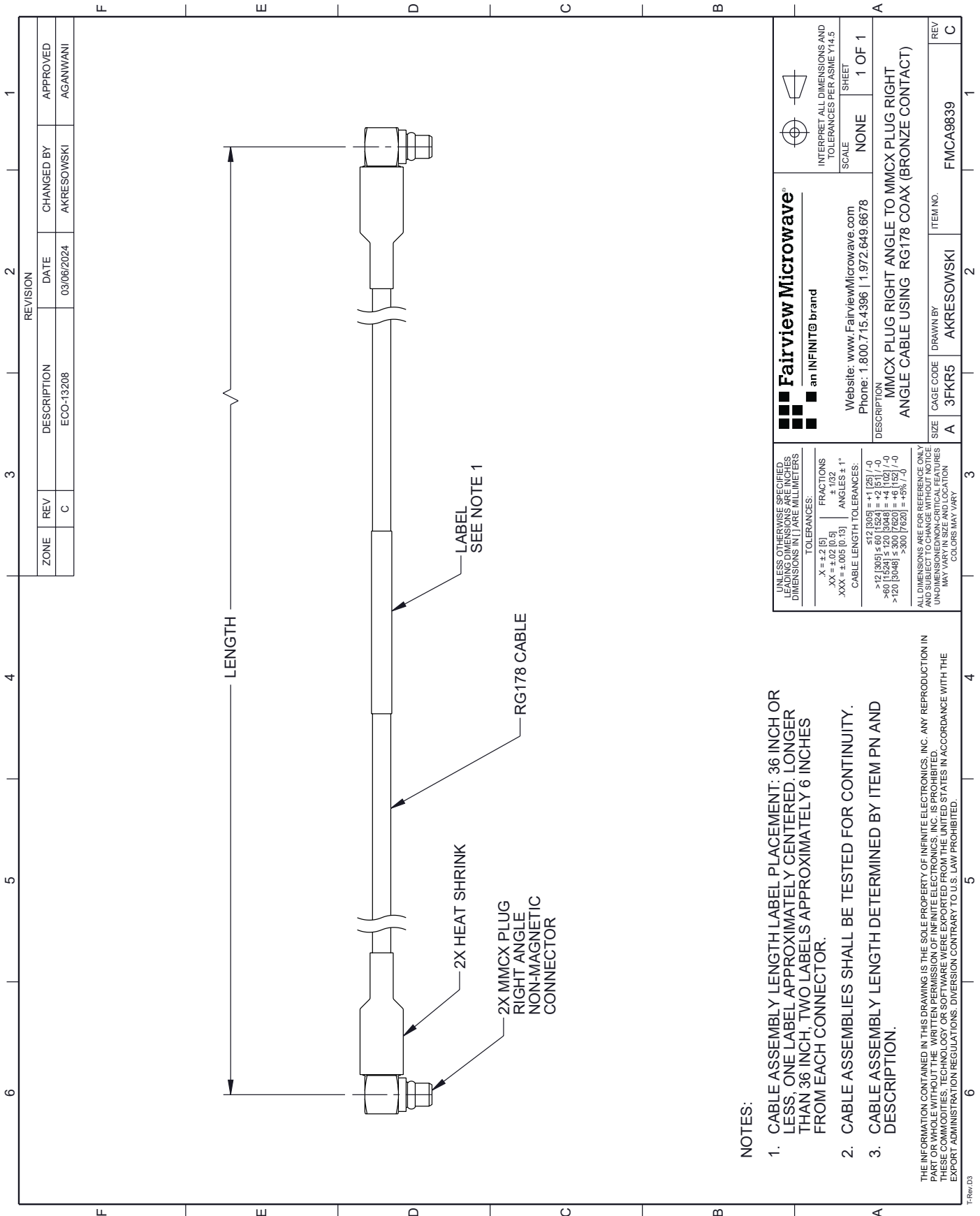
For additional information on this product, please click the following link: [MMCX Plug Right Angle to MMCX Plug Right Angle using RG178 Coax Cable \(Bronze Contact\) in 24 Inches FMCA9839-24](#)

URL: <https://www.fairviewmicrowave.com/non-magnetic-ra-mmcx-plug-to-ra-mmcx-plug-cable-rg178-coax-in-24-inch-fmca9839-24-p.aspx>

The information contained within this document is accurate to the best of our knowledge and representative of the part described herein. It may be necessary to make modifications to the part and/or the documentation of the part in order to implement improvements. Fairview Microwave reserves the right to make such changes as required. Unless otherwise stated, all specifications are nominal. Fairview Microwave does not make any representation or warranty regarding the suitability of the part described herein for any particular purpose, and Fairview Microwave does not assume liability arising out of the use of any part or document.

FMCA9839-24 CAD Drawing

MMCX Plug Right Angle to MMCX Plug Right Angle using RG178 Coax Cable (Bronze Contact) in 24 Inches



NOTES:

1. CABLE ASSEMBLY LENGTH LABEL PLACEMENT: 36 INCH OR LESS, ONE LABEL APPROXIMATELY CENTERED. LONGER THAN 36 INCH, TWO LABELS APPROXIMATELY 6 INCHES FROM EACH CONNECTOR.
2. CABLE ASSEMBLIES SHALL BE TESTED FOR CONTINUITY.
3. CABLE ASSEMBLY LENGTH DETERMINED BY ITEM PN AND DESCRIPTION.

THE INFORMATION CONTAINED IN THIS DRAWING IS THE SOLE PROPERTY OF INFINITE ELECTRONICS, INC. ANY REPRODUCTION IN PART OR WHOLE WITHOUT THE WRITTEN PERMISSION OF INFINITE ELECTRONICS, INC. IS PROHIBITED. THESE COMMODITIES, TECHNOLOGY OR SOFTWARE WERE EXPORTED FROM THE UNITED STATES IN ACCORDANCE WITH THE EXPORT ADMINISTRATION REGULATIONS. DIVERSION CONTRARY TO U.S. LAW PROHIBITED.

TRev_03

REVISION		CHANGED BY	APPROVED
ZONE	REV	DESCRIPTION	DATE
	C	ECO-13208	03/06/2024
		AKRESOWSKI	AGANWANI

<p>Fairview Microwave an INFINITB brand</p>		<p>INTERPRET ALL DIMENSIONS AND TOLERANCES PER ASME Y14.5</p>
Website: www.FairviewMicrowave.com Phone: 1.800.715.4396 1.972.649.6678		SCALE: NONE SHEET: 1 OF 1
DESCRIPTION: MMCX PLUG RIGHT ANGLE TO MMCX PLUG RIGHT ANGLE CABLE USING RG178 COAX (BRONZE CONTACT)		
SIZE: A CAGE CODE: 3FKR5	DRAWN BY: AKRESOWSKI	ITEM NO: FMCA9839
		REV: C

UNLESS OTHERWISE SPECIFIED LEADING DIMENSIONS ARE INCHES DIMENSIONS IN [] ARE MILLIMETERS	TOLERANCES: X = ±.2 (5) .XX = ±.02 (0.5) .XXX = ±.005 (0.13)	FRACTIONS: ± 1/32 ANGLES: ± 1°
CABLE LENGTH TOLERANCES: ≤12 (305) ±.11 (28) >12 (305) ≤60 (1524) ±.12 (30.5) >60 (1524) ≤120 (3048) ±.14 (35.5) >120 (3048) ≤300 (7620) ±.16 (40.6) >300 (7620) ±.19 (48.3)	ALL DIMENSIONS ARE FOR REFERENCE ONLY AND SUBJECT TO CHANGE WITHOUT NOTICE UNLESS OTHERWISE SPECIFIED. DIMENSIONS MAY VARY IN SIZE AND LOCATION. COLORS MAY VARY.	