

20KV Female Bulkhead to SHV Plug Cable RG213HV Coax in 60 Inch



FMCA9784-60

Configuration

- Connector 1: 20KV Female Bulkhead
- Connector 2: SHV Plug
- Cable Type: RG213HV

Features

- 69% Phase Velocity
- polyurethane Jacket

Applications

- General Purpose
- Laboratory Use

Description

The 20KV female bulkhead to SHV plug 60 inch cable using RG213HV coax, part number FMCA9784-60, from Fairview Microwave is in-stock and ships same day. This Fairview 20KV to SHV cable assembly has a female to plug gender configuration with 50 ohm RG213HV coax. Our RF cable assembly with 20KV bulkhead interface allows designers to create external connections on their product enclosures, and can be used in a variety of other rack mount and panel mount applications. Our 20kV high voltage RF cable assemblies are designed to handle higher voltages and minimize the risk of electric shock. Both the connectors used in this cable assemblies have recessed contact design to withstand unmated higher voltage. These cable assemblies are commonly used in applications where high voltage transmission and RF signal integrity are critical. These cable assemblies are constructed with high-quality insulation materials capable of withstanding higher voltages, ensuring safety and preventing electrical breakdown. Our cable assemblies are built with durable and flexible materials to withstand harsh environmental conditions and repetitive movements, ensuring reliable performance over extended periods.

Custom versions of most RF cable assemblies can be built and shipped same day. Custom cable assembly lengths can be obtained by specifying the desired length on the web site at time of order or by contacting a sales representative. Other RF cable assembly value added services including connector orientation or clocking, heat shrink booting and labeling are also available. RF testing can also be performed to document the electrical performance of your cable assembly.

Electrical Specifications

Description	Minimum	Typical	Maximum	Units
Velocity of Propagation		69		%
Operating Voltage (DC)			1,750	Vdc
Test Voltage (DC)			2,500	V

Electrical Specification Notes:

Values at 25°C, sea level. Maximum Test Voltage of SHV is 2500.

Mechanical Specifications

Cable Assembly

Length	60 in [152.4 cm]
Width/Diameter	0.5 in [12.7 mm]
Weight	0.39 lbs [176.9 g]

20KV Female Bulkhead to SHV Plug
Cable RG213HV Coax in 60 Inch



FMCA9784-60

Cable

Cable Type	RG213HV
Impedance	50 Ohms
Inner Conductor Material and Plating	Copper, Bare
Dielectric Type	PE
Number of Shields	1
Jacket Material	polyurethane
Jacket Diameter	0.394 in [10.01 mm]
Repeated Minimum Bend Radius	1.969 in [50.01 mm]

Connectors

Description	Connector 1	Connector 2
Type	20KV Female Bulkhead	SHV Plug
Specification	MIL-STD-202	MIL-STD-348A
Impedance	50 Ohms	50 Ohms
Configuration	Straight	Straight
Contact Material and Plating	Beryllium Copper, Gold/Tri-Metal	Brass, Gold
Contact Plating Specification		30 µin minimum
Dielectric Type	PE (HD)	PTFE
Body Material and Plating	Brass, Nickel Over Copper	Brass, Nickel
Body Plating Specification		100 µin minimum
Coupling Nut Material and Plating	Brass, Nickel Over Copper	Brass, Nickel
Coupling Nut Plating Specification		100 µin minimum

Environmental Specifications

Compliance Certifications (see [product page](#) for current document)

Plotted and Other Data

Notes:
Values at 25°C, sea level.

20KV Female Bulkhead to SHV Plug
Cable RG213HV Coax in 60 Inch



FMCA9784-60

Typical Performance Data

How to Order

Part Number Configuration:

FMCA9784

- xx

uu



Example: FMCA9784-12 = 12 inches long cable
FMCA9784-100cm = 100 cm long cable

20KV Female Bulkhead to SHV Plug Cable RG213HV Coax in 60 Inch from Fairview Microwave is in-stock and available to ship same-day. All of our RF/microwave products are available off-the-shelf from our ISO 9001:2008 certified facilities in Lewisville, Texas. Fairview Microwave is RF on-demand.

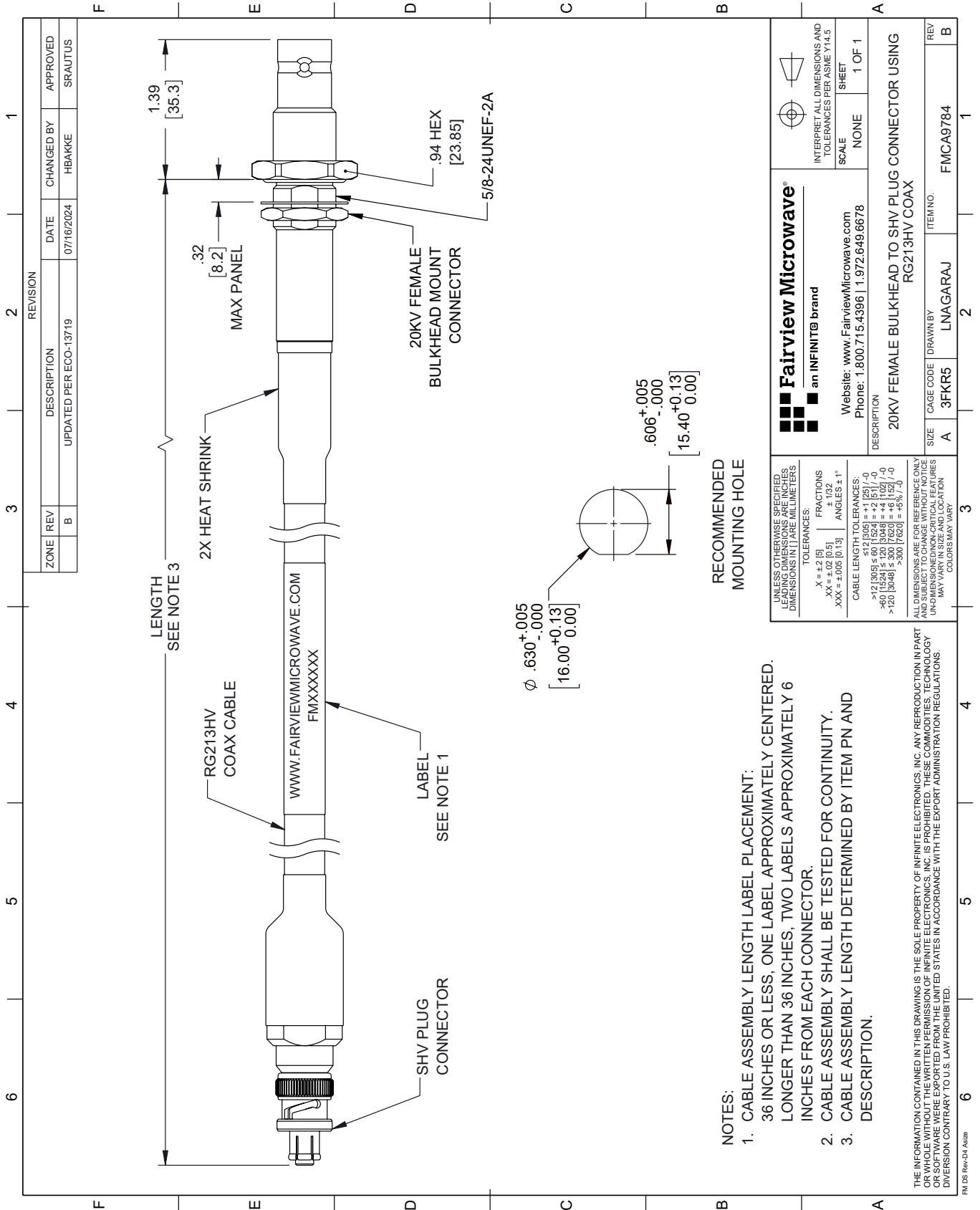
For additional information on this product, please click the following link: [20KV Female Bulkhead to SHV Plug Cable RG213HV Coax in 60 Inch FMCA9784-60](#)

URL: <https://www.fairviewmicrowave.com/20kv-female-bulkhead-to-shv-plug-cable-rg213hv-coax-in-60-inch-fmca9784-60-p.aspx>

The information contained within this document is accurate to the best of our knowledge and representative of the part described herein. It may be necessary to make modifications to the part and/or the documentation of the part in order to implement improvements. Fairview Microwave reserves the right to make such changes as required. Unless otherwise stated, all specifications are nominal. Fairview Microwave does not make any representation or warranty regarding the suitability of the part described herein for any particular purpose, and Fairview Microwave does not assume liability arising out of the use of any part or document.

FMCA9784-60 CAD Drawing

20KV Female Bulkhead to SHV Plug Cable RG213HV Coax in 60 Inch



REVISION		DATE	CHANGED BY	APPROVED
ZONE	REV	DESCRIPTION		
	B	UPDATED PER ECO-13719	HBAKKE	SRAUTUS

 Fairview Microwave® an INFINIT® brand		Website: www.FairviewMicrowave.com Phone: 1.800.715.4396 1.972.649.6678	INTERPRET ALL DIMENSIONS AND TOLERANCES PER ASME Y14.5 SCALE: NONE SHEET: 1 OF 1
DESCRIPTION 20KV FEMALE BULKHEAD TO SHV PLUG CONNECTOR USING RG213HV COAX		CAGE CODE: LNAGARAJ ITEM NO.: FMCA9784	REV: B
SIZE: A CAGE CODE: 3FKR5	DRAWN BY: LNAGARAJ	ITEM NO.: FMCA9784	REV: B

RECOMMENDED MOUNTING HOLE

- NOTES:
- CABLE ASSEMBLY LENGTH LABEL PLACEMENT: 36 INCHES OR LESS, ONE LABEL APPROXIMATELY CENTERED. LONGER THAN 36 INCHES, TWO LABELS APPROXIMATELY 6 INCHES FROM EACH CONNECTOR.
 - CABLE ASSEMBLY SHALL BE TESTED FOR CONTINUITY.
 - CABLE ASSEMBLY LENGTH DETERMINED BY ITEM PN AND DESCRIPTION.

UNLESS OTHERWISE SPECIFIED, LEADING DIMENSIONS ARE IN INCHES AND UNLEADING DIMENSIONS ARE IN MILLIMETERS.
 TOLERANCES:
 .X = ±.2 (5) FRACTIONS ± 1/32
 .XX = ±.02 (0.5) ANGLES ± 1°
 .XXX = ±.005 (0.13)
 CABLE LENGTH TOLERANCES:
 <12 (305) ≤ 60 (1524) = ±.1 (25) / -0
 >60 (1524) ≤ 120 (3048) = ±.4 (102) / -0
 >120 (3048) ≤ 300 (7620) = ±.6 (15) / -0
 ALL DIMENSIONS ARE FOR REFERENCE ONLY. UNLESS OTHERWISE SPECIFIED, DIMENSIONS ARE IN INCHES AND UNLEADING DIMENSIONS ARE IN MILLIMETERS. COLORS MAY VARY.