

## 10KV Female Bulkhead to 10KV Female Bulkhead Cable RG303HV Coax

### FMCA9765



#### Configuration

- Connector 1: 10KV Female Bulkhead
- Connector 2: 10KV Female Bulkhead
- Cable Type: RG303HV

#### Features

- 69% Phase Velocity
- FEP Jacket
- Voltage rating of 10kV
- Recessed Contacts

#### Applications

- General Purpose
- Laboratory Use
- High voltage power supplies/Amplifiers
- Nuclear instrumentation
- Test and measurement equipment

#### Description

The 10KV female bulkhead to 10KV female bulkhead cable using RG303HV coax, part number FMCA9765, from Fairview Microwave is in-stock and ships same day. This Fairview 10KV to 10KV cable assembly has a female to female gender configuration with 50 ohm RG303HV coax. Our RF cable assembly with 10KV bulkhead interface allows designers to create external connections on their product enclosures, and can be used in a variety of other rack mount and panel mount applications. Our 10kV high voltage RF cable assemblies are designed to handle higher voltages and minimize the risk of electric shock. Both the connectors used in this cable assemblies have recessed contact design to withstand unmated higher voltage. These cable assemblies are commonly used in applications where high voltage transmission and RF signal integrity are critical. These cable assemblies are constructed with high-quality insulation materials capable of withstanding higher voltages, ensuring safety and preventing electrical breakdown. Our cable assemblies are built with durable and flexible materials to withstand harsh environmental conditions and repetitive movements, ensuring reliable performance over extended periods.

Custom versions of most RF cable assemblies can be built and shipped same day. Custom cable assembly lengths can be obtained by specifying the desired length on the web site at time of order or by contacting a sales representative. Other RF cable assembly value added services including connector orientation or clocking, heat shrink booting and labeling are also available. RF testing can also be performed to document the electrical performance of your cable assembly.

#### Electrical Specifications

Description	Minimum	Typical	Maximum	Units
Velocity of Propagation		69		%
Operating Voltage (DC)			10,000	Vdc
Test Voltage (DC)			15,000	V

Electrical Specification Notes:  
Values at 25°C, sea level.

#### Mechanical Specifications

**Cable Assembly**  
Width/Diameter  
Weight

0.5 in [12.7 mm]  
0.052 lbs [23.59 g]

10KV Female Bulkhead to 10KV Female  
Bulkhead Cable RG303HV Coax

FMCA9765



<b>Cable</b>	
Cable Type	RG303HV
Impedance	50 Ohms
Inner Conductor Material and Plating	Silver, Copper Clad Aluminum
Dielectric Type	FEP
Number of Shields	1
Jacket Material	FEP
Jacket Diameter	0.169 in [4.29 mm]
Repeated Minimum Bend Radius	0.788 in [20.02 mm]

Connectors

Description	Connector 1	Connector 2
Type	10KV Female Bulkhead	10KV Female Bulkhead
Specification	MIL-STD-202	MIL-STD-202
Impedance	50 Ohms	50 Ohms
Configuration	Straight	Straight
Contact Material and Plating	Brass, Gold/Tri-Metal	Brass, Gold/Tri-Metal
Dielectric Type	PE (HD)	PE (HD)
Body Material and Plating	Brass, Tinned Copper	Brass, Tinned Copper
Coupling Nut Material and Plating	Brass, Tinned Copper	Brass, Tinned Copper

Environmental Specifications

Compliance Certifications (see [product page](#) for current document)

Plotted and Other Data

Notes:  
Values at 25°C, sea level.

## 10KV Female Bulkhead to 10KV Female Bulkhead Cable RG303HV Coax



### FMCA9765

#### Typical Performance Data

#### How to Order

Part Number Configuration:

**FMCA9765**

**- xx**

**uu**

Unit of Measure:  
cm = Centimeters  
<blank> = Inches  
Length  
Base Number

Example: FMCA9765-12 = 12 inches long cable  
FMCA9765-100cm = 100 cm long cable

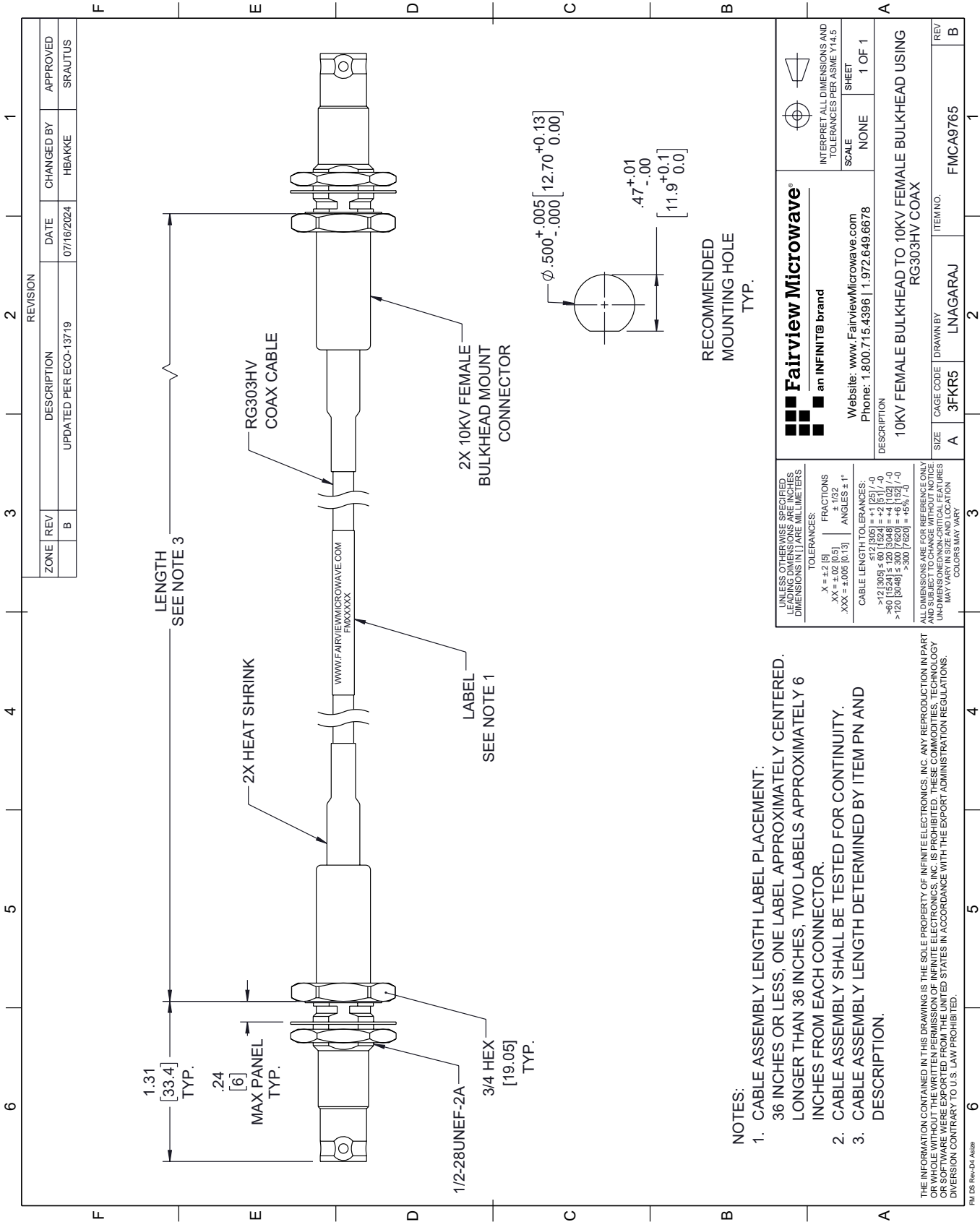
10KV Female Bulkhead to 10KV Female Bulkhead Cable RG303HV Coax from Fairview Microwave is in-stock and available to ship same-day. All of our RF/microwave products are available off-the-shelf from our ISO 9001:2008 certified facilities in Lewisville, Texas. Fairview Microwave is RF on-demand.

For additional information on this product, please click the following link: [10KV Female Bulkhead to 10KV Female Bulkhead Cable RG303HV Coax FMCA9765](#)

URL: <https://www.fairviewmicrowave.com/10kv-female-bulkhead-to-10kv-female-bulkhead-cable-rg303hv-coax-fm-ca9765-p.aspx>

The information contained within this document is accurate to the best of our knowledge and representative of the part described herein. It may be necessary to make modifications to the part and/or the documentation of the part in order to implement improvements. Fairview Microwave reserves the right to make such changes as required. Unless otherwise stated, all specifications are nominal. Fairview Microwave does not make any representation or warranty regarding the suitability of the part described herein for any particular purpose, and Fairview Microwave does not assume liability arising out of the use of any part or document.

FMCA9765 CAD Drawing
10KV Female Bulkhead to 10KV Female Bulkhead Cable RG303HV Coax



- NOTES:
1. CABLE ASSEMBLY LENGTH LABEL PLACEMENT:  
36 INCHES OR LESS, ONE LABEL APPROXIMATELY CENTERED.  
LONGER THAN 36 INCHES, TWO LABELS APPROXIMATELY 6 INCHES FROM EACH CONNECTOR.
  2. CABLE ASSEMBLY SHALL BE TESTED FOR CONTINUITY.
  3. CABLE ASSEMBLY LENGTH DETERMINED BY ITEM PN AND DESCRIPTION.

THE INFORMATION CONTAINED IN THIS DRAWING IS THE SOLE PROPERTY OF INFINITE ELECTRONICS, INC. ANY REPRODUCTION IN PART OR WHOLE WITHOUT THE WRITTEN PERMISSION OF INFINITE ELECTRONICS, INC. IS PROHIBITED. THESE COMMODITIES, TECHNOLOGY OR SOFTWARE WERE EXPORTED FROM THE UNITED STATES IN ACCORDANCE WITH THE EXPORT ADMINISTRATION REGULATIONS. DIVISION CONTRARY TO U.S. LAW PROHIBITED.

FM DS Rev-D4 Altize