

10KV Male to 10KV Female Bulkhead Cable RG303HV Coax in 12 Inch



FMCA9764-12

Configuration

- Connector 1: 10KV Male
- Connector 2: 10KV Female Bulkhead
- Cable Type: RG303HV

Features

- 69% Phase Velocity
- FEP Jacket
- Voltage rating of 10kV
- Recessed Contacts

Applications

- General Purpose
- Laboratory Use
- High voltage power supplies/Amplifiers
- Nuclear instrumentation
- Test and measurement equipment

Description

The 10KV male to 10KV female bulkhead 12 inch cable using RG303HV coax, part number FMCA9764-12, from Fairview Microwave is in-stock and ships same day. This Fairview 10KV to 10KV cable assembly has a male to female gender configuration with 50 ohm RG303HV coax. Our RF cable assembly with 10KV bulkhead interface allows designers to create external connections on their product enclosures, and can be used in a variety of other rack mount and panel mount applications. Our 10kV high voltage RF cable assemblies are designed to handle higher voltages and minimize the risk of electric shock. Both the connectors used in this cable assemblies have recessed contact design to withstand unmated higher voltage. These cable assemblies are commonly used in applications where high voltage transmission and RF signal integrity are critical. These cable assemblies are constructed with high-quality insulation materials capable of withstanding higher voltages, ensuring safety and preventing electrical breakdown. Our cable assemblies are built with durable and flexible materials to withstand harsh environmental conditions and repetitive movements, ensuring reliable performance over extended periods.

Custom versions of most RF cable assemblies can be built and shipped same day. Custom cable assembly lengths can be obtained by specifying the desired length on the web site at time of order or by contacting a sales representative. Other RF cable assembly value added services including connector orientation or clocking, heat shrink booting and labeling are also available. RF testing can also be performed to document the electrical performance of your cable assembly.

Electrical Specifications

| Description | Minimum | Typical | Maximum | Units |
|-------------------------|---------|---------|---------|-------|
| Velocity of Propagation | | 69 | | % |
| Operating Voltage (DC) | | | 10,000 | Vdc |
| Test Voltage (DC) | | | 15,000 | V |

Electrical Specification Notes:
Values at 25°C, sea level.

Mechanical Specifications

Cable Assembly
Length
Width/Diameter

12 in [304.8 mm]
0.5 in [12.7 mm]

10KV Male to 10KV Female Bulkhead
Cable RG303HV Coax in 12 Inch



FMCA9764-12

| | |
|--------------------------------------|------------------------------|
| Weight | 0.072 lbs [32.66 g] |
| Cable | |
| Cable Type | RG303HV |
| Impedance | 50 Ohms |
| Inner Conductor Material and Plating | Silver, Copper Clad Aluminum |
| Dielectric Type | FEP |
| Number of Shields | 1 |
| Jacket Material | FEP |
| Jacket Diameter | 0.169 in [4.29 mm] |
| Repeated Minimum Bend Radius | 0.788 in [20.02 mm] |

Connectors

| Description | Connector 1 | Connector 2 |
|-----------------------------------|----------------------------------|-----------------------|
| Type | 10KV Male | 10KV Female Bulkhead |
| Specification | MIL-STD-202 | MIL-STD-202 |
| Impedance | 50 Ohms | 50 Ohms |
| Configuration | Straight | Straight |
| Contact Material and Plating | Beryllium Copper, Gold/Tri-Metal | Brass, Gold/Tri-Metal |
| Dielectric Type | PE (HD) | PE (HD) |
| Body Material and Plating | Brass, Nickel Over Copper | Brass, Tinned Copper |
| Coupling Nut Material and Plating | Brass, Nickel Over Copper | Brass, Tinned Copper |

Environmental Specifications

Compliance Certifications (see [product page](#) for current document)

Plotted and Other Data

Notes:
Values at 25°C, sea level.

10KV Male to 10KV Female Bulkhead Cable RG303HV Coax in 12 Inch



FMCA9764-12

Typical Performance Data

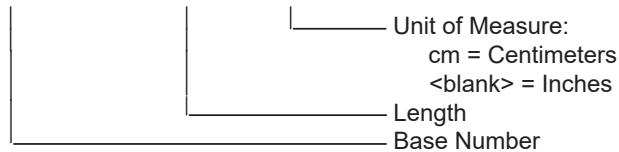
How to Order

Part Number Configuration:

FMCA9764

- xx

uu



Example: FMCA9764-12 = 12 inches long cable
FMCA9764-100cm = 100 cm long cable

10KV Male to 10KV Female Bulkhead Cable RG303HV Coax in 12 Inch from Fairview Microwave is in-stock and available to ship same-day. All of our RF/microwave products are available off-the-shelf from our ISO 9001:2008 certified facilities in Lewisville, Texas. Fairview Microwave is RF on-demand.

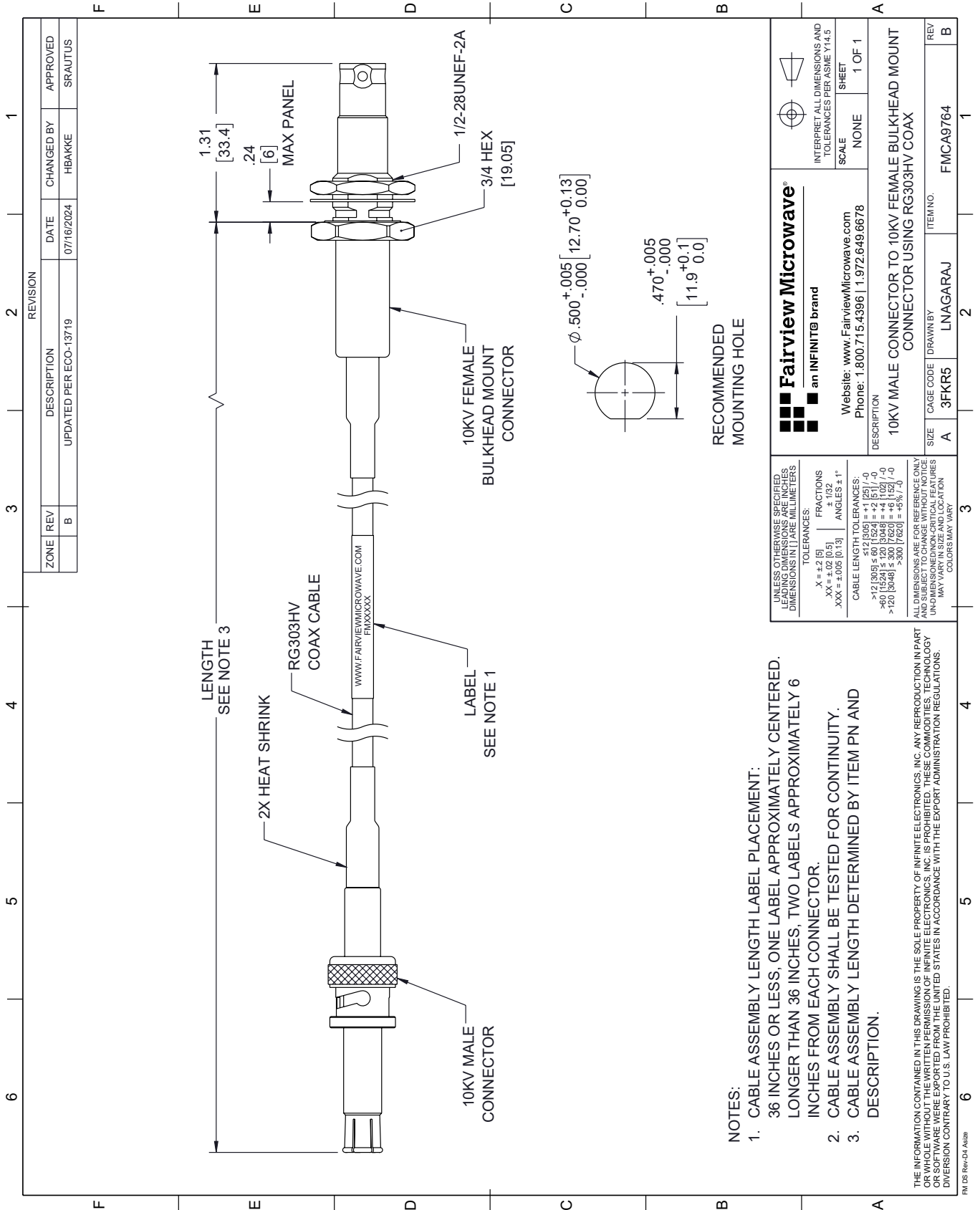
For additional information on this product, please click the following link: [10KV Male to 10KV Female Bulkhead Cable RG303HV Coax in 12 Inch FMCA9764-12](#)

URL: <https://www.fairviewmicrowave.com/10kv-male-to-10kv-female-bulkhead-cable-rg303hv-coax-in-12-inch-fm-ca9764-12-p.aspx>

The information contained within this document is accurate to the best of our knowledge and representative of the part described herein. It may be necessary to make modifications to the part and/or the documentation of the part in order to implement improvements. Fairview Microwave reserves the right to make such changes as required. Unless otherwise stated, all specifications are nominal. Fairview Microwave does not make any representation or warranty regarding the suitability of the part described herein for any particular purpose, and Fairview Microwave does not assume liability arising out of the use of any part or document.

FMCA9764-12 CAD Drawing

10KV Male to 10KV Female Bulkhead Cable RG303HV Coax in 12 Inch



- NOTES:**
- CABLE ASSEMBLY LENGTH LABEL PLACEMENT: 36 INCHES OR LESS, ONE LABEL APPROXIMATELY CENTERED. LONGER THAN 36 INCHES, TWO LABELS APPROXIMATELY 6 INCHES FROM EACH CONNECTOR.
 - CABLE ASSEMBLY SHALL BE TESTED FOR CONTINUITY.
 - CABLE ASSEMBLY LENGTH DETERMINED BY ITEM PN AND DESCRIPTION.

THE INFORMATION CONTAINED IN THIS DRAWING IS THE SOLE PROPERTY OF INFINITE ELECTRONICS, INC. ANY REPRODUCTION IN PART OR WHOLE WITHOUT THE WRITTEN PERMISSION OF INFINITE ELECTRONICS, INC. IS PROHIBITED. THESE COMMODITIES, TECHNOLOGY OR SOFTWARE WERE EXPORTED FROM THE UNITED STATES IN ACCORDANCE WITH THE EXPORT ADMINISTRATION REGULATIONS. DIVERSION CONTRARY TO U.S. LAW PROHIBITED.

FM DS Rev-D4 Alt2b

| | | |
|-------------------------------------------------------------------------------------------------------------------------------------------------------------------------------------------------------------------------------------|----------------------------------------------------------------------------------------------------------------------------------------------------|------------------------------------------------------------------------------------------------------------------------------|
| Fairview Microwave® an INFINITIB brand Website: www.FairviewMicrowave.com Phone: 1.800.715.4396 1.972.649.6678 | | INTERPRET ALL DIMENSIONS AND TOLERANCES PER ASME Y14.5 SCALE NONE SHEET 1 OF 1 |
| DESCRIPTION 10KV MALE CONNECTOR TO 10KV FEMALE BULKHEAD MOUNT CONNECTOR USING RG303HV COAX | | |
| UNLESS OTHERWISE SPECIFIED, LEADING DIMENSIONS ARE IN INCHES, DIMENSIONS IN [] ARE MILLIMETERS TOLERANCES: .X = ±.2 [5] .XX = ±.02 [0.5] .XXX = ±.005 [0.13] FRACTIONS ± 1/32 ANGLES ± 1° .XXX = ±.005 [0.13] | CABLE LENGTH TOLERANCES: <12 [305] ≤ 60 [1524] = ±1 [25] / -0 >60 [1524] ≤ 120 [3048] = ±4 [102] / -0 >120 [3048] ≤ 300 [7620] = ±5% / -0 | ALL DIMENSIONS ARE FOR REFERENCE ONLY UNDIMENSIONS/NON-CRITICAL FEATURES MAY VARY IN SIZE AND LOCATION COLORS MAY VARY |
| SIZE A CAGE CODE 3FKR5 DRAWN BY LNAGARAJ ITEM NO. FMCA9764 | REV B | REV B |