

## Low Loss N Female Bulkhead to RA SMA Male Cable TCOM-240 Coax in 36 Inch with Times Microwave Components

The type N female bulkhead to RA SMA male 36 inch cable using TCOM-240 coax, part number FMCA3301-36, from Fairview Microwave is in-stock and ships same day. This Fairview type N to SMA cable assembly has a female to male gender configuration with 50 ohm flexible TCOM-240 coax. Fairview Microwave's flexible RF cable assemblies are ideal for applications where tight bends and continual flexure are required. The FMCA3301-36 type N female to SMA male cable assembly operates to 6 GHz. The right angle SMA interface on the TCOM-240 cable allows for easier connections in tight spaces. Our RF cable assembly with type N bulkhead interface allows designers to create external connections on their product enclosures, and can be used in a variety of other rack mount and panel mount applications. The double shielding of this Fairview cable assembly provides excellent shielding effectiveness.

Custom versions of most RF cable assemblies can be built and shipped same day. Custom cable assembly lengths can be obtained by specifying the desired length on the web site at time of order or by contacting a sales representative. Other RF cable assembly value added services including connector orientation or clocking, heat shrink booting and labeling are also available. RF testing can also be performed to document the electrical performance of your cable assembly.

### Electrical Specifications

Description	Min	Typ	Max	Units
Frequency Range	DC		6	GHz
VSWR			1.4:1	

### Performance by Frequency

Description	F1	F2	F3	F4	F5	Units
Frequency	0.25	0.5	1	2.5	6	GHz
Insertion Loss (Typ.)	0.64	0.69	0.76	0.9	1.13	dB

#### Electrical Specification Notes:

The Insertion Loss data above is based on the performance specifications of the coax and connectors used in this assembly. The Insertion Loss includes an estimated insertion loss of 0.28 dB for the N female connector and 0.25 dB for the SMA male right angle connector

### Mechanical Specifications

#### Cable Assembly

Length\* 36 in [914.4 mm]  
Weight 0.203 lbs [92.08 g]

#### Cable

Cable Type TCOM-240  
Impedance 50 Ohms  
Inner Conductor Type Solid  
Inner Conductor Material and Plating Copper  
Dielectric Type PE (F)  
Number of Shields 2  
Shield Layer 1 Silver Plated Copper Braid  
Shield Layer 2 Tinned Copper Braid



### Configuration:

- N Female Bulkhead
- SMA Male Right Angle
- TCOM-240

### Features:

- Max Frequency 6 GHz
- Double Shielded
- PE Jacket
- 500 Mating Cycles

### Applications:

- General Purpose
- Laboratory Use

Fairview Microwave  
301 Leora Ln., Suite 100  
Lewisville, TX 75056  
Tel: 1-800-715-4396 / (972) 649-6678  
Fax: (972) 649-6689  
[www.fairviewmicrowave.com](http://www.fairviewmicrowave.com)  
[sales@fairviewmicrowave.com](mailto:sales@fairviewmicrowave.com)

Jacket Material PE, Black  
 Jacket Diameter 0.24 in [6.1 mm]

**Connectors**

Description	Connector 1	Connector 2
Type	N Female Threaded	SMA Male Threaded
Mount Method	Bulkhead	
Specification	MIL-STD-348	MIL-STD-348
Impedance	50 Ohms	50 Ohms
Mating Cycles	500	500
Contact Material & Plating	Beryllium Copper, Gold	Brass/Phosphor Bronze, Gold
Contact Plating Spec.	50 μinches	50 μinch
Dielectric Type	PTFE	Teflon
Outer Cond Material & Plating	Brass, Tri-Metal	
Outer Cond Plating Spec.	80 μinches	
Body Material & Plating	Brass, Tri-Metal	Brass, Tri-Metal
Body Plating Spec.		80 μinch
Coupling Nut Material & Plating		Brass, Tri-Metal
Coupling Nut Plating Spec.		80 μinch

**Compliance Certifications** (see [product page](#) for current document)

**Plotted and Other Data**

Notes:

**How to Order**

Part Number Configuration:

**FMCA3301 - xx uu**

cm = Centimeters  
 <blank> = Inches  
 Length

Example: FMCA3301-12 = 12 inches long cable  
 FMCA3301-100cm = 100 cm long cable

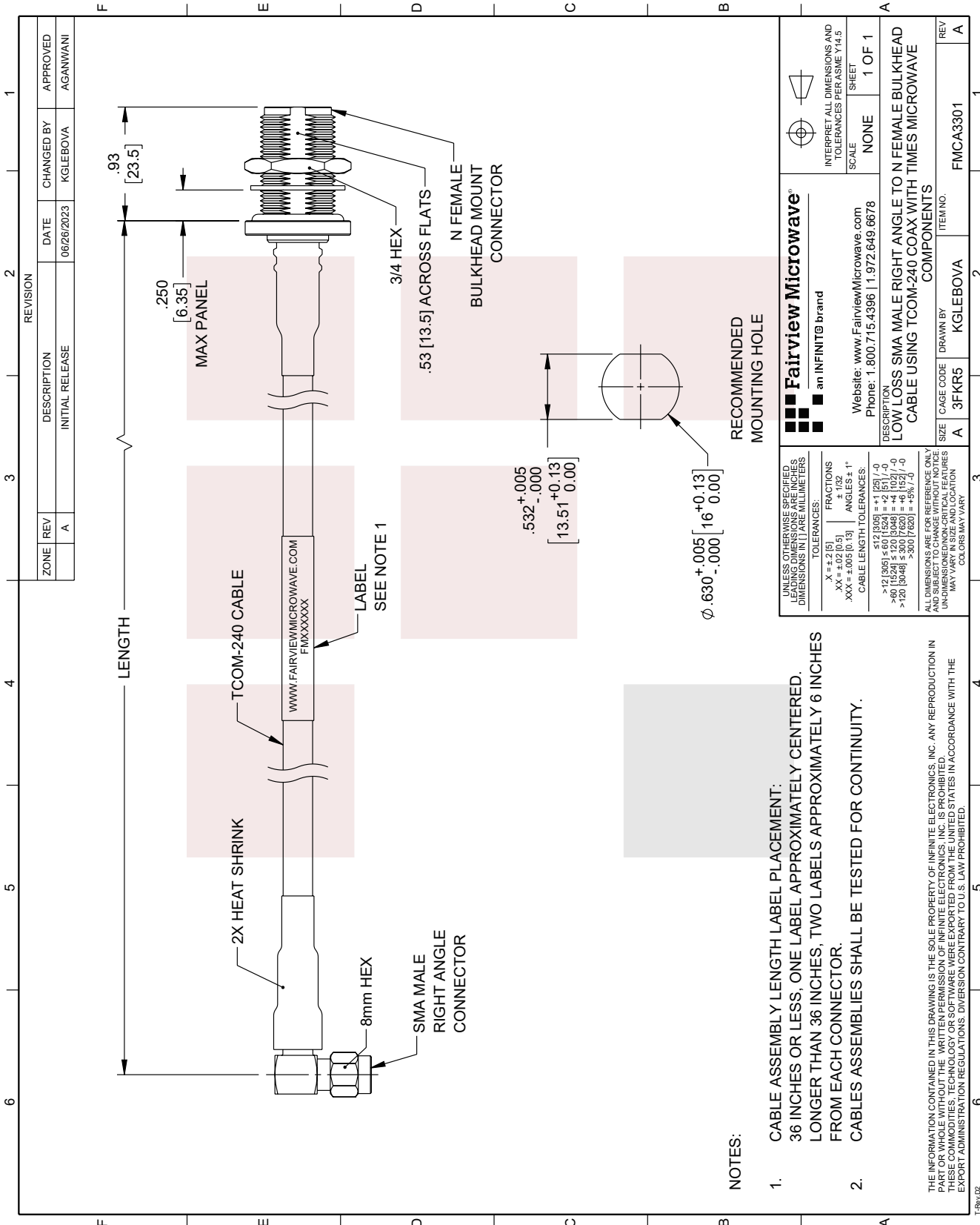
Low Loss N Female Bulkhead to RA SMA Male Cable TCOM-240 Coax in 36 Inch with Times Microwave Components from Fairview Microwave has same day shipment for domestic and International orders. Our RF, microwave and millimeter wave products maintain a 99% availability and are part of the broadest selection in the industry.

Click the following link to obtain additional part information: [Low Loss N Female Bulkhead to RA SMA Male Cable TCOM-240 Coax in 36 Inch with Times Microwave Components FMCA3301-36](https://www.fairviewmicrowave.com/low-loss-n-female-bulkhead-to-ra-sma-male-cable-tcom-240-coax-in-36-inch-with-times-microwave-components-fmca3301-36)

URL: <https://www.fairviewmicrowave.com/low-loss-n-female-bulkhead-to-ra-sma-male-cable-tcom-240-coax-in-36-inch-with-times-microwave-components-fmca3301-36-p.aspx>

The information contained in this document is accurate to the best of our knowledge and representative of the part described herein. It may be necessary to make modifications to the part and/or the documentation of the part, in order to implement improvements. Fairview Microwave reserves the right to make such changes as required. Unless otherwise stated, all specifications are nominal. Fairview Microwave does not make any representation or warranty regarding the suitability of the part described herein for any particular purpose, and Fairview Microwave does not assume any liability arising out of the use of any part or documentation.





REVISION		DATE	CHANGED BY	APPROVED
ZONE	REV	DESCRIPTION		
	A	INITIAL RELEASE	KGLEBOVA	AGANWANI

<p>Fairview Microwave<sup>®</sup> an INFINIT<sup>®</sup> brand</p> <p>Website: <a href="http://www.FairviewMicrowave.com">www.FairviewMicrowave.com</a> Phone: 1.800.715.4396   1.972.649.6678</p>		<p>INTERPRET ALL DIMENSIONS AND TOLERANCES PER ASME Y14.5</p> <p>SCALE: NONE</p> <p>SHEET: 1 OF 1</p>
<p>UNLESS OTHERWISE SPECIFIED, LEADING DIMENSIONS ARE IN INCHES AND DIMENSIONS IN [ ] ARE IN MILLIMETERS.</p> <p>TOLERANCES:                  .X = ±.2 [5]                  .XX = ±.02 [0.5]                  .XXX = ±.005 [0.13]</p> <p>FRACTIONS:                  ± 1/32                  ANGLES ± 1°</p> <p>CABLE LENGTH TOLERANCES:                  &gt;12 [305] ≤ 60 [1524] = ±.2 [5] / -0                  &gt;6 [152] ≤ 30 [762] = ±.1 [2.5] / -0                  &gt;120 [3048] ≤ 300 [7620] = ±.6 [152] / -0                  &gt;360 [9144] ≤ 360 [7620] = ±.6% / -0</p>		<p>DESCRIPTION                  LOW LOSS SMA MALE RIGHT ANGLE TO N FEMALE BULKHEAD CABLE USING TCOM-240 COAX WITH TIMES MICROWAVE</p>
SIZE	CAGE CODE	ITEM NO.
A	3FKR5	FMC-A3301

**NOTES:**

- CABLE ASSEMBLY LENGTH LABEL PLACEMENT: 36 INCHES OR LESS, ONE LABEL APPROXIMATELY CENTERED. LONGER THAN 36 INCHES, TWO LABELS APPROXIMATELY 6 INCHES FROM EACH CONNECTOR.
- CABLES ASSEMBLIES SHALL BE TESTED FOR CONTINUITY.

ALL DIMENSIONS ARE FOR REFERENCE ONLY AND SUBJECT TO CHANGE WITHOUT NOTICE UNLESS OTHERWISE SPECIFIED. DIMENSIONS MAY VARY. COLORS MAY VARY.

THE INFORMATION CONTAINED IN THIS DRAWING IS THE SOLE PROPERTY OF INFINITE ELECTRONICS, INC. ANY REPRODUCTION IN ANY FORM OR BY ANY MEANS WITHOUT THE WRITTEN PERMISSION OF INFINITE ELECTRONICS, INC. IS PROHIBITED. THESE COMMODITY OR TECHNOLOGY OF SOFTWARE WERE EXPORTED FROM THE UNITED STATES IN ACCORDANCE WITH THE EXPORT ADMINISTRATION REGULATIONS. DIVERSION CONTRARY TO U.S. LAW PROHIBITED.