

Low Loss RA SMA Male to RP SMA Plug Cable TCOM-240 Coax in 60 Inch with Times Microwave Components

The RA SMA male to RP SMA plug 60 inch cable using TCOM-240 coax, part number FMCA3275-60, from Fairview Microwave is in-stock and ships same day. This Fairview SMA to reverse polarity SMA cable assembly has a male to plug gender configuration with 50 ohm flexible TCOM-240 coax. Fairview Microwave's flexible RF cable assemblies are ideal for applications where tight bends and continual flexure are required. The FMCA3275-60 SMA male to reverse polarity SMA plug cable assembly operates to 2.5 GHz. The right angle SMA interface on the TCOM-240 cable allows for easier connections in tight spaces. The double shielding of this Fairview cable assembly provides excellent shielding effectiveness.

Custom versions of most RF cable assemblies can be built and shipped same day. Custom cable assembly lengths can be obtained by specifying the desired length on the web site at time of order or by contacting a sales representative. Other RF cable assembly value added services including connector orientation or clocking, heat shrink booting and labeling are also available. RF testing can also be performed to document the electrical performance of your cable assembly.

Electrical Specifications

Description	Min	Typ	Max	Units
Frequency Range	DC		2.5	GHz
VSWR			1.4:1	

Performance by Frequency

Description	F1	F2	F3	F4	F5	Units
Frequency	0.25	0.5	1	2.5		GHz
Insertion Loss (Typ.)	0.53	0.61	0.73	0.97		dB

Electrical Specification Notes:

The Insertion Loss data above is based on the performance specifications of the coax and connectors used in this assembly. The Insertion Loss includes an estimated insertion loss of 0.25 dB for the SMA male connector and 0.1 dB for the rp SMA plug connector

Mechanical Specifications

Cable Assembly

Length*	60 in [152.4 cm]
Weight	0.271 lbs [122.92 g]

Cable

Cable Type	TCOM-240
Impedance	50 Ohms
Inner Conductor Type	Solid
Inner Conductor Material and Plating	Copper
Dielectric Type	PE (F)
Number of Shields	2
Shield Layer 1	Silver Plated Copper Braid
Shield Layer 2	Tinned Copper Braid
Jacket Material	PE, Black
Jacket Diameter	0.24 in [6.1 mm]



Configuration:

- SMA Male Right Angle
- SMA Plug Reverse Polarity
- TCOM-240

Features:

- Max Frequency 2.5 GHz
- Double Shielded
- PE Jacket
- 500 Mating Cycles

Applications:

- General Purpose
- Laboratory Use

Fairview Microwave
 301 Leora Ln., Suite 100
 Lewisville, TX 75056
 Tel: 1-800-715-4396 / (972) 649-6678
 Fax: (972) 649-6689
www.fairviewmicrowave.com
sales@fairviewmicrowave.com

Connectors

Description	Connector 1	Connector 2
Type	SMA Male Threaded	SMA Plug Threaded
Polarity		Reverse Polarity
Specification	MIL-STD-348	MIL-STD-345
Impedance	50 Ohms	50 Ohms
Mating Cycles	500	500
Contact Material & Plating	Brass/Phosphor Bronze, Gold	Beryllium copper, Gold
Contact Plating Spec.	50 μinch	
Dielectric Type	Teflon	
Body Material & Plating	Brass, Tri-Metal	Passivated Stainless Steel
Body Plating Spec.	80 μinch	
Coupling Nut Material & Plating	Brass, Tri-Metal	Passivated Stainless Steel
Coupling Nut Plating Spec.	80 μinch	

Compliance Certifications (see [product page](#) for current document)

Plotted and Other Data

Notes:

How to Order

Part Number Configuration:

FMCA3275 - xx uu

cm = Centimeters
 <blank> = Inches

Length

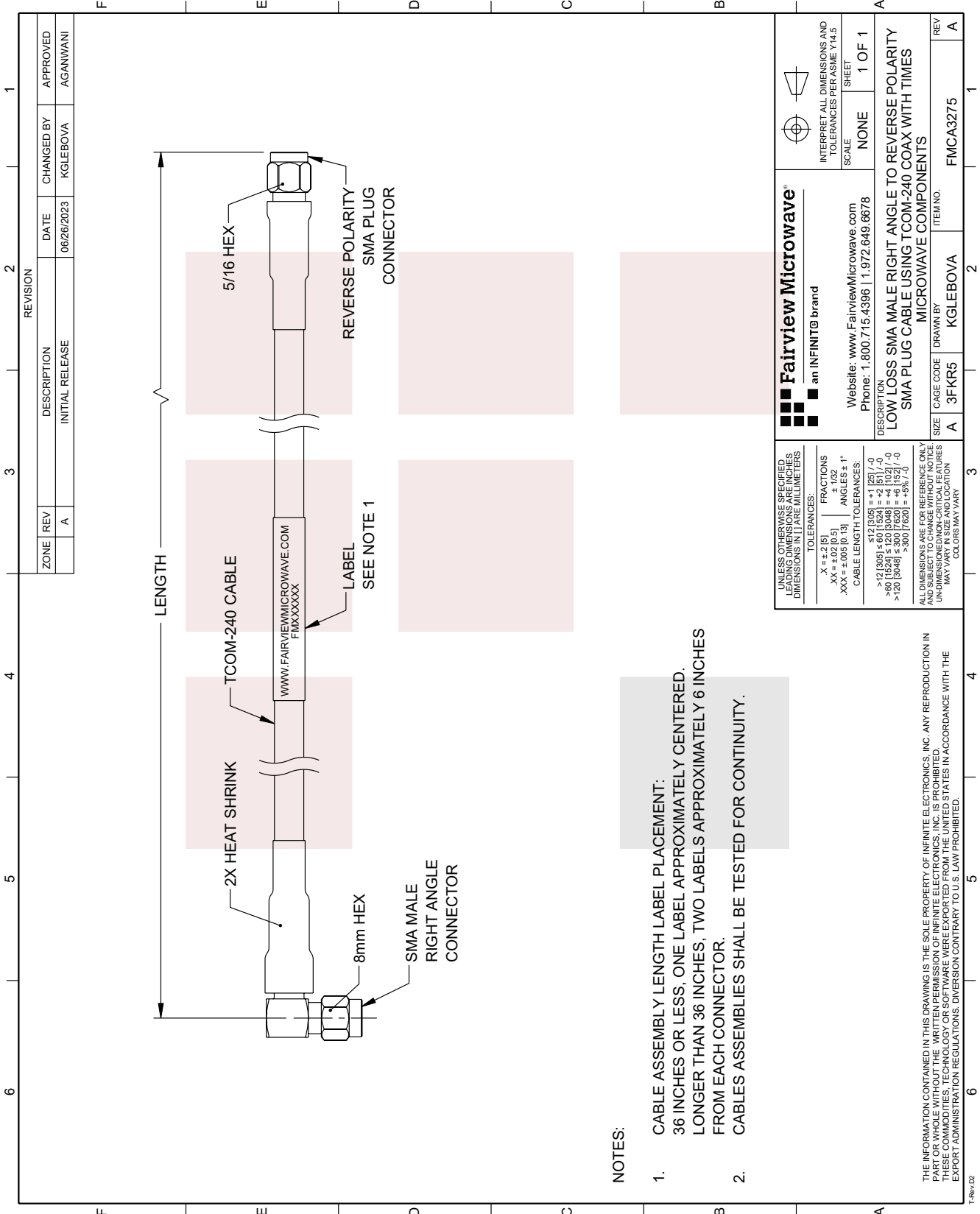
Example: FMCA3275-12 = 12 inches long cable
 FMCA3275-100cm = 100 cm long cable

Low Loss RA SMA Male to RP SMA Plug Cable TCOM-240 Coax in 60 Inch with Times Microwave Components from Fairview Microwave has same day shipment for domestic and International orders. Our RF, microwave and millimeter wave products maintain a 99% availability and are part of the broadest selection in the industry.

Click the following link to obtain additional part information: [Low Loss RA SMA Male to RP SMA Plug Cable TCOM-240 Coax in 60 Inch with Times Microwave Components FMCA3275-60](#)

URL: <https://www.fairviewmicrowave.com/low-loss-ra-sma-male-to-rp-sma-plug-cable-tcom-240-coax-in-60-inch-with-times-microwave-components-fmca3275-60-p.aspx>

The information contained in this document is accurate to the best of our knowledge and representative of the part described herein. It may be necessary to make modifications to the part and/or the documentation of the part, in order to implement improvements. Fairview Microwave reserves the right to make such changes as required. Unless otherwise stated, all specifications are nominal. Fairview Microwave does not make any representation or warranty regarding the suitability of the part described herein for any particular purpose, and Fairview Microwave does not assume any liability arising out of the use of any part or documentation.



NOTES:

1. CABLE ASSEMBLY LENGTH LABEL PLACEMENT:
36 INCHES OR LESS, ONE LABEL APPROXIMATELY CENTERED.
LONGER THAN 36 INCHES, TWO LABELS APPROXIMATELY 6 INCHES FROM EACH CONNECTOR.
2. CABLES ASSEMBLIES SHALL BE TESTED FOR CONTINUITY.

<p>Fairview Microwave® an INFINIT® brand</p> <p>Website: www.FairviewMicrowave.com Phone: 1.800.715.4396 1.972.649.6678</p>		<p>INTERPRET ALL DIMENSIONS AND TOLERANCES PER ASME Y14.5</p> <p>SCALE: NONE SHEET: 1 OF 1</p>	
<p>UNLESS OTHERWISE SPECIFIED, LEADING DIMENSIONS ARE IN INCHES, DIMENSIONS IN [] ARE MILLIMETERS</p> <p>TOLERANCES: .X = ±.2 [5] .XX = ±.02 [0.5] .XXX = ±.005 [0.13] FRACTIONS ± 1/32 ANGLES ± 1°</p> <p>CABLE LENGTH TOLERANCES: >12 [305] ≤ 60 [1524] = ±.05 [1.27] >6 [152] ≤ 30 [762] = ±.03 [0.762] >120 [3048] ≤ 300 [7620] = ±.1 [2.54] >300 [7620] = ±.15 [3.81]</p>		<p>DESCRIPTION LOW LOSS SMA MALE RIGHT ANGLE TO REVERSE POLARITY SMA PLUG CABLE USING TCOM-240 COAX WITH TIMES MICROWAVE COMPONENTS</p>	
<p>SIZE: A</p>	<p>CAGE CODE: 3FKR5</p>	<p>DRAWN BY: KGLEBOVA</p>	<p>ITEM NO.: FMC-A3275</p>
<p>REV: A</p>	<p>APPROVED: AGANWANI</p>	<p>CHANGED BY: KGLEBOVA</p>	<p>DATE: 06/26/2023</p>
<p>ZONE: A</p>	<p>REV: A</p>	<p>DESCRIPTION: INITIAL RELEASE</p>	<p>REVISION: 1</p>

THE INFORMATION CONTAINED IN THIS DRAWING IS THE SOLE PROPERTY OF INFINITE ELECTRONICS, INC. ANY REPRODUCTION IN WHOLE OR IN PART WITHOUT THE WRITTEN PERMISSION OF INFINITE ELECTRONICS, INC. IS PROHIBITED. THESE COMMERCIAL TECHNOLOGY OR SOFTWARE WERE EXPORTED FROM THE UNITED STATES IN ACCORDANCE WITH THE EXPORT ADMINISTRATION REGULATIONS. DIVERSION CONTRARY TO U.S. LAW PROHIBITED.