

## Low Loss SMA Male to RA SMA Male Cable TCOM-240 Coax in 36 Inch with Times Microwave Components

The SMA male to RA SMA male 36 inch cable using TCOM-240 coax, part number FMCA3272-36, from Fairview Microwave is in-stock and ships same day. This Fairview SMA to SMA cable assembly has a male to male gender configuration with 50 ohm flexible TCOM-240 coax. Fairview Microwave's flexible RF cable assemblies are ideal for applications where tight bends and continual flexure are required. The FMCA3272-36 SMA male to SMA male cable assembly operates to 6 GHz. The right angle SMA interface on the TCOM-240 cable allows for easier connections in tight spaces. The double shielding of this Fairview cable assembly provides excellent shielding effectiveness.

Custom versions of most RF cable assemblies can be built and shipped same day. Custom cable assembly lengths can be obtained by specifying the desired length on the web site at time of order or by contacting a sales representative. Other RF cable assembly value added services including connector orientation or clocking, heat shrink booting and labeling are also available. RF testing can also be performed to document the electrical performance of your cable assembly.

### Electrical Specifications

Description	Min	Typ	Max	Units
Frequency Range	DC		6	GHz
VSWR			1.4:1	

### Performance by Frequency

Description	F1	F2	F3	F4	F5	Units
Frequency	0.25	0.5	1	2.5	6	GHz
Insertion Loss (Typ.)	0.61	0.66	0.73	0.87	1.1	dB

#### Electrical Specification Notes:

The Insertion Loss data above is based on the performance specifications of the coax and connectors used in this assembly. The Insertion Loss includes an estimated insertion loss of 0.25 dB per connector.

### Mechanical Specifications

#### Cable Assembly

Length*	36 in [914.4 mm]
Weight	0.131 lbs [59.42 g]

#### Cable

Cable Type	TCOM-240
Impedance	50 Ohms
Inner Conductor Type	Solid
Inner Conductor Material and Plating	Copper
Dielectric Type	PE (F)
Number of Shields	2
Shield Layer 1	Silver Plated Copper Braid
Shield Layer 2	Tinned Copper Braid
Jacket Material	PE, Black
Jacket Diameter	0.24 in [6.1 mm]



### Configuration:

- SMA Male
- SMA Male Right Angle
- TCOM-240

### Features:

- Max Frequency 6 GHz
- Double Shielded
- PE Jacket
- 500 Mating Cycles

### Applications:

- General Purpose
- Laboratory Use

Fairview Microwave  
 301 Leora Ln., Suite 100  
 Lewisville, TX 75056  
 Tel: 1-800-715-4396 / (972) 649-6678  
 Fax: (972) 649-6689  
[www.fairviewmicrowave.com](http://www.fairviewmicrowave.com)  
[sales@fairviewmicrowave.com](mailto:sales@fairviewmicrowave.com)

**Connectors**

Description	Connector 1	Connector 2
Type	SMA Male Threaded	SMA Male Threaded
Specification	MIL-STD-348	MIL-STD-348
Impedance	50 Ohms	50 Ohms
Mating Cycles	500	500
Contact Material & Plating	Beryllium Copper, Gold	Brass/Phosphor Bronze, Gold
Contact Plating Spec.	ASTM B488	50 μinch
Dielectric Type	PTFE	Teflon
Outer Cond Material & Plating	Brass, Tri-Metal	
Body Material & Plating	Brass, Tri-Metal	Brass, Tri-Metal
Body Plating Spec.		80 μinch
Coupling Nut Material & Plating	Brass, Tri-Metal	Brass, Tri-Metal
Coupling Nut Plating Spec.		80 μinch

**Compliance Certifications** (see [product page](#) for current document)

**Plotted and Other Data**

Notes:

**How to Order**

Part Number Configuration:

**FMCA3272 - xx uu**

cm = Centimeters  
 <blank> = Inches

Length

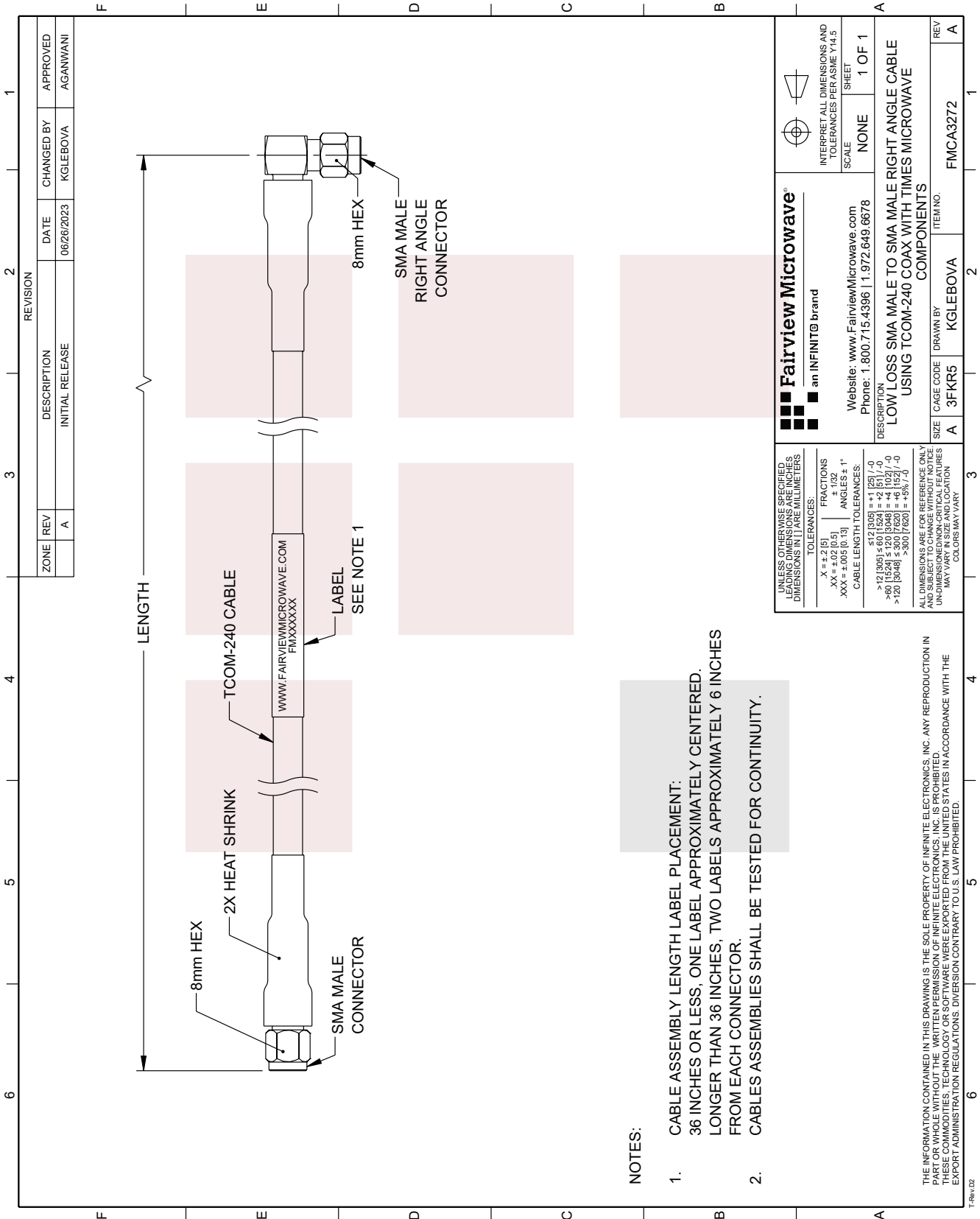
Example: FMCA3272-12 = 12 inches long cable  
 FMCA3272-100cm = 100 cm long cable

Low Loss SMA Male to RA SMA Male Cable TCOM-240 Coax in 36 Inch with Times Microwave Components from Fairview Microwave has same day shipment for domestic and International orders. Our RF, microwave and millimeter wave products maintain a 99% availability and are part of the broadest selection in the industry.

Click the following link to obtain additional part information: [Low Loss SMA Male to RA SMA Male Cable TCOM-240 Coax in 36 Inch with Times Microwave Components FMCA3272-36](#)

URL: <https://www.fairviewmicrowave.com/low-loss-sma-male-to-ra-sma-male-cable-tcom-240-coax-in-36-inch-with-times-microwave-components-fmca3272-36-p.aspx>

The information contained in this document is accurate to the best of our knowledge and representative of the part described herein. It may be necessary to make modifications to the part and/or the documentation of the part, in order to implement improvements. Fairview Microwave reserves the right to make such changes as required. Unless otherwise stated, all specifications are nominal. Fairview Microwave does not make any representation or warranty regarding the suitability of the part described herein for any particular purpose, and Fairview Microwave does not assume any liability arising out of the use of any part or documentation.



- NOTES:**
1. CABLE ASSEMBLY LENGTH LABEL PLACEMENT: 36 INCHES OR LESS, ONE LABEL APPROXIMATELY CENTERED. LONGER THAN 36 INCHES, TWO LABELS APPROXIMATELY 6 INCHES FROM EACH CONNECTOR.
  2. CABLES ASSEMBLIES SHALL BE TESTED FOR CONTINUITY.

<p><b>Fairview Microwave®</b> an INFINIT® brand</p> <p>Website: <a href="http://www.FairviewMicrowave.com">www.FairviewMicrowave.com</a> Phone: 1.800.715.4396   1.972.649.6678</p>		<p>INTERPRET ALL DIMENSIONS AND TOLERANCES PER ASME Y14.5</p> <p>SCALE: NONE</p> <p>SHEET: 1 OF 1</p>	
<p>UNLESS OTHERWISE SPECIFIED, LEADING DIMENSIONS ARE IN INCHES, DIMENSIONS IN [ ] ARE MILLIMETERS</p> <p>TOLERANCES:</p> <p>X = ± 0.015</p> <p>.XX = ± 0.02 [0.5]</p> <p>.XXX = ± 0.005 [0.13]</p> <p>FRACTIONS: ± 1/32</p> <p>ANGLES ± 1°</p> <p>CABLE LENGTH TOLERANCES:</p> <p>≤ 12 [305] = ± 0.1 [2.54]</p> <p>&gt; 12 [305] ≤ 60 [1524] = ± 0.125 [3.175]</p> <p>&gt; 60 [1524] ≤ 300 [7620] = ± 0.15 [3.81]</p> <p>&gt; 300 [7620] ≤ 360 [9144] = ± 0.18 [4.57]</p> <p>&gt; 360 [9144] ≤ 390 [9906] = ± 0.2 [5.08]</p> <p>&gt; 390 [9906] ≤ 480 [12192] = ± 0.25 [6.35]</p> <p>&gt; 480 [12192] ≤ 3000 [76200] = ± 0.3 [7.62]</p>		<p>DESCRIPTION: LOW LOSS SMA MALE TO SMA MALE RIGHT ANGLE CABLE USING TCOM-240 COAX WITH TIMES MICROWAVE COMPONENTS</p>	
SIZE	CAGE CODE	DRAWN BY	ITEM NO.
A	3FKR5	KGLEBOVA	FMC-A3272
REV			
A			

ALL DIMENSIONS ARE FOR REFERENCE ONLY AND SUBJECT TO CHANGE WITHOUT NOTICE. UN-DIMENSIONED CRITICAL FEATURES MAY VARY. COLORS MAY VARY.

THE INFORMATION CONTAINED IN THIS DRAWING IS THE SOLE PROPERTY OF INFINITE ELECTRONICS, INC. ANY REPRODUCTION IN WHOLE OR IN PART WITHOUT THE WRITTEN PERMISSION OF INFINITE ELECTRONICS, INC. IS PROHIBITED. THESE COMMODITIES, TECHNOLOGY OR SOFTWARE WERE EXPORTED FROM THE UNITED STATES IN ACCORDANCE WITH THE EXPORT ADMINISTRATION REGULATIONS. DIVERSION CONTRARY TO U.S. LAW PROHIBITED.