

## 2.92mm Male to 2.92mm Female Bulkhead Cable FM-SR086TBJ Coax in 12 Inch



### FMCA3262-12

#### Configuration

- Connector 1: 2.92mm Male
- Connector 2: 2.92mm Female Bulkhead
- Cable Type: FM-SR086TBJ
- Coax Flex Type: Formable

#### Features

- Max Frequency 20 GHz
- Shielding Effectivity > 100 dB
- 69.5% Phase Velocity
- FEP Jacket
- 500 Mating Cycles

#### Applications

- General Purpose
- Laboratory Use

#### Description

The 2.92mm male to 2.92mm female bulkhead 12 inch cable using FM-SR086TBJ coax, part number FMCA3262-12, from Fairview Microwave is in-stock and ships same day. This Fairview 2.92mm to 2.92mm cable assembly has a male to female gender configuration with 50 ohm formable FM-SR086TBJ coax. Fairview Microwave's formable RF cable assemblies provide an alternative to costly pre-formed semi-rigid assemblies since they are hand formable. The FMCA3262-12 2.92mm male to 2.92mm female cable assembly operates to 20 GHz. Our RF cable assembly with 2.92mm bulkhead interface allows designers to create external connections on their product enclosures, and can be used in a variety of other rack mount and panel mount applications.

Custom versions of most RF cable assemblies can be built and shipped same day. Custom cable assembly lengths can be obtained by specifying the desired length on the web site at time of order or by contacting a sales representative. Other RF cable assembly value added services including connector orientation or clocking, heat shrink booting and labeling are also available. RF testing can also be performed to document the electrical performance of your cable assembly.

#### Electrical Specifications

Description	Minimum	Typical	Maximum	Units
Frequency Range	DC		20	GHz
VSWR			1.3:1	
Velocity of Propagation		69.5		%
RF Shielding	100			dB
Group Delay		1.43 [4.69]		ns/ft [ns/m]
Capacitance		29 [95.14]		pF/ft [pF/m]
DC Resistance Inner Conductor		65.7 [215.55]		Ohms/1000ft [Ohms/Km]
DC Resistance Outer Conductor		10.2 [33.46]		Ohms/1000ft [Ohms/Km]

2.92mm Male to 2.92mm Female Bulkhead  
Cable FM-SR086TBJ Coax in 12 Inch



**FMCA3262-12**

**Electrical Specifications**

Description	Minimum	Typical	Maximum	Units
Operating Voltage (AC)			335	Vrms

**Specifications by Frequency**

Description	F1	F2	F3	F4	F5	Units
Frequency	1	2	4.5	9	20	GHz
Insertion Loss (Typ.)	0.37	0.47	0.7	0.98	1.48	dB

Electrical Specification Notes:

The Insertion Loss data above is based on the performance specifications of the coax and connectors used in this assembly. The Insertion Loss includes an estimated insertion loss of 0.04xSQRT(FGHz)dB for the male connector and 0.1 dB for the female connector.

**Mechanical Specifications**

**Cable Assembly**

Length	12 in [304.8 mm]
Width/Diameter	0.5 in [12.7 mm]
Weight	0.04 lbs [18.14 g]

**Cable**

Cable Type	FM-SR086TBJ
Impedance	50 Ohms
Inner Conductor Type	Solid
Inner Conductor Material and Plating	Copper Clad Steel, Silver
Dielectric Type	PTFE
Number of Shields	1
Outer Conductor 1 Material and Plating	Tinned Copper Composite Braid
Jacket Material	FEP, Black
Jacket Diameter	0.105 in [2.67 mm]
One Time Minimum Bend Radius	0.5 in [12.7 mm]
Repeated Minimum Bend Radius	0.787 in [19.99 mm]

2.92mm Male to 2.92mm Female Bulkhead  
Cable FM-SR086TBJ Coax in 12 Inch



**FMCA3262-12**

**Connectors**

Description	Connector 1	Connector 2
Type	2.92mm Male	2.92mm Female Bulkhead
Impedance	50 Ohms	50 Ohms
Configuration	Straight	Straight
Mating Cycles	500	500
Contact Material and Plating	Beryllium Copper, Gold over Nickel	Beryllium Copper, Gold
Contact Plating Specification	50 µin minimum	MIL-G-45204
Dielectric Type	PEI	PTFE
Outer Conductor Material and Plating		Stainless Steel, Passivated
Body Material and Plating	Beryllium Copper, Gold over Nickel	Stainless Steel, Passivated
Body Plating Specification	50 µin minimum	
Coupling Nut Material and Plating	Passivated Stainless Steel	
Coupling Nut Plating Specification	ASTM-A582	
Hex Size	5/16 inch	
Torque	8 in-lbs 0.9 Nm	

**Environmental Specifications**

Operating Range Temperature -55 to +125 deg C

**Compliance Certifications** (see [product page](#) for current document)

**Plotted and Other Data**

Notes:

2.92mm Male to 2.92mm Female Bulkhead  
Cable FM-SR086TBJ Coax in 12 Inch

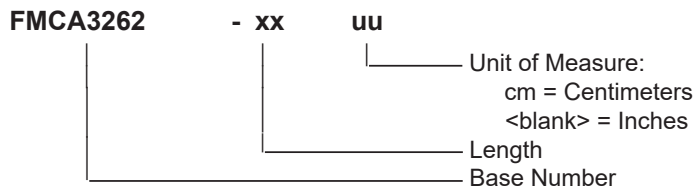


**FMCA3262-12**

**Typical Performance Data**

**How to Order**

Part Number Configuration:



Example: FMCA3262-12 = 12 inches long cable  
FMCA3262-100cm = 100 cm long cable

2.92mm Male to 2.92mm Female Bulkhead Cable FM-SR086TBJ Coax in 12 Inch from Fairview Microwave is in-stock and available to ship same-day. All of our RF/microwave products are available off-the-shelf from our ISO 9001:2008 certified facilities in Lewisville, Texas. Fairview Microwave is RF on-demand.

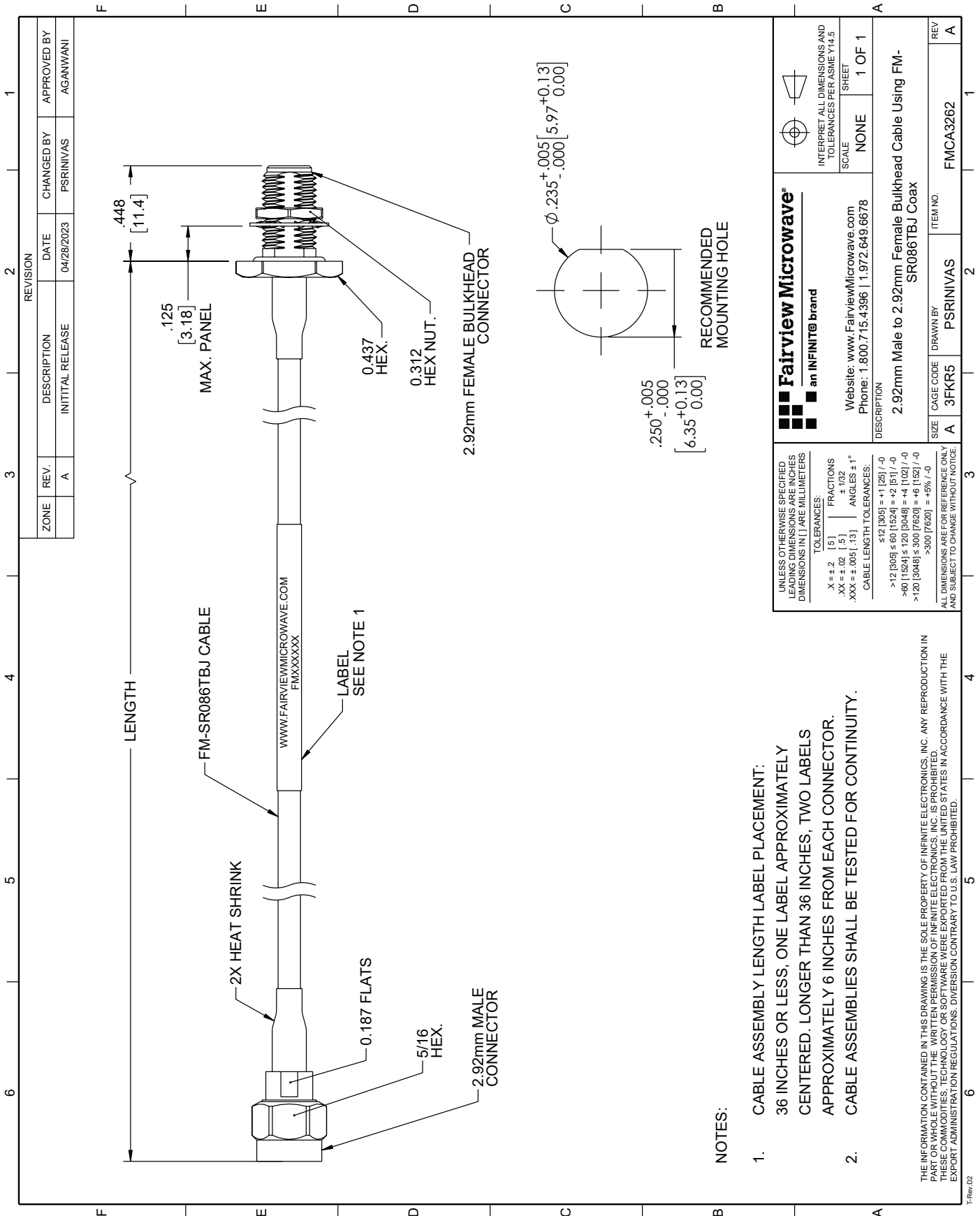
For additional information on this product, please click the following link: [2.92mm Male to 2.92mm Female Bulkhead Cable FM-SR086TBJ Coax in 12 Inch FMCA3262-12](#)

URL: <https://www.fairviewmicrowave.com/2.92mm-male-to-2.92mm-female-bulkhead-cable-fm-sr086tbj-coax-in-12-inch-fmca3262-12-p.aspx>

The information contained within this document is accurate to the best of our knowledge and representative of the part described herein. It may be necessary to make modifications to the part and/or the documentation of the part in order to implement improvements. Fairview Microwave reserves the right to make such changes as required. Unless otherwise stated, all specifications are nominal. Fairview Microwave does not make any representation or warranty regarding the suitability of the part described herein for any particular purpose, and Fairview Microwave does not assume liability arising out of the use of any part or document.

# FMCA3262-12 CAD Drawing

2.92mm Male to 2.92mm Female Bulkhead Cable FM-SR086TBJ Coax in 12 Inch



**NOTES:**

1. CABLE ASSEMBLY LENGTH LABEL PLACEMENT:  
36 INCHES OR LESS, ONE LABEL APPROXIMATELY CENTERED. LONGER THAN 36 INCHES, TWO LABELS APPROXIMATELY 6 INCHES FROM EACH CONNECTOR.
2. CABLE ASSEMBLIES SHALL BE TESTED FOR CONTINUITY.

THE INFORMATION CONTAINED IN THIS DRAWING IS THE SOLE PROPERTY OF INFINITE ELECTRONICS, INC. ANY REPRODUCTION IN PART OR WHOLE WITHOUT THE WRITTEN PERMISSION OF INFINITE ELECTRONICS, INC. IS PROHIBITED. THESE COMMODITIES, TECHNOLOGY OR SOFTWARE WERE EXPORTED FROM THE UNITED STATES IN ACCORDANCE WITH THE EXPORT ADMINISTRATION REGULATIONS. DIVERSION CONTRARY TO U.S. LAW PROHIBITED.

TRF002

REVISION		DATE	CHANGED BY	APPROVED BY
ZONE	REV.	DESCRIPTION		
	A	INITIAL RELEASE	PSRINIVAS	AGANWANI

<p><b>Fairview Microwave</b> an INFINIT<sup>®</sup> brand</p> <p>Website: <a href="http://www.FairviewMicrowave.com">www.FairviewMicrowave.com</a> Phone: 1.800.715.4396   1.972.649.6678</p>	<p>INTERPRET ALL DIMENSIONS AND TOLERANCES PER ASME Y14.5</p>
	<p>SCALE: NONE</p> <p>SHEET: 1 OF 1</p>
<p>DESCRIPTION: 2.92mm Male to 2.92mm Female Bulkhead Cable Using FM-SR086TBJ Coax</p>	
<p>SIZE: A</p> <p>CAGE CODE: 3FKR5</p> <p>DRAWN BY: PSRINIVAS</p> <p>ITEM NO: FMCA3262</p>	<p>REV: A</p>

UNLESS OTHERWISE SPECIFIED, ALL DIMENSIONS ARE IN INCHES. DIMENSIONS IN [ ] ARE IN MILLIMETERS.

TOLERANCES:

X = ±.2 [5] FRACTIONS  
 .XX = ±.02 [.5] ±.1/32  
 .XXX = ±.005 [0.13] ANGLES ± 1°

CABLE LENGTH TOLERANCES:

<12 [305] = ±.1 [25] / -0  
 >12 [305] ≤ 60 [1524] = ±.2 [5] / -0  
 >60 [1524] ≤ 120 [3048] = ±.4 [102] / -0  
 >120 [3048] ≤ 300 [7620] = ±.8 [152] / -0  
 >300 [7620] = ±.9% / -0

ALL DIMENSIONS ARE FOR REFERENCE ONLY AND SUBJECT TO CHANGE WITHOUT NOTICE.