

SHV Jack to SHV Jack Bulkhead Cable RG-142 Coax in 48 Inch

The SHV jack to SHV jack bulkhead 48 inch cable using RG-142 coax, part number FMCA3157-48, from Fairview Microwave is in-stock and ships same day. This Fairview SHV to SHV cable assembly has a jack to jack gender configuration with 50 ohm flexible RG142 coax. Fairview Microwave's flexible RF cable assemblies are ideal for applications where tight bends and continual flexure are required. The FMCA3157-48 SHV jack to SHV jack cable assembly operates to 300 MHz. Our RF cable assembly with SHV bulkhead interface allows designers to create external connections on their product enclosures, and can be used in a variety of other rack mount and panel mount applications. The double shielding of this Fairview cable assembly provides excellent shielding effectiveness. Safety high voltage connectors are designed to allow signal transmission with high voltage ratings without safety risk for the operators. Both the pin and socket contacts are securely recessed inside the insulation to guard against potential electrical shock when live unmated connectors are handled.

Custom versions of most RF cable assemblies can be built and shipped same day. Custom cable assembly lengths can be obtained by specifying the desired length on the web site at time of order or by contacting a sales representative. Other RF cable assembly value added services including connector orientation or clocking, heat shrink booting and labeling are also available. RF testing can also be performed to document the electrical performance of your cable assembly.

Electrical Specifications

Description	Min	Typ	Max	Units
Frequency Range	DC		300	MHz
Velocity of Propagation		70		%
Capacitance		29.4 [96.46]		pF/ft [pF/m]
Operating Voltage (AC)			1,900	Vrms

Performance by Frequency

Description	F1	F2	F3	F4	F5	Units
Frequency	100	250	300			MHz
Insertion Loss (Typ.)	0.36	0.42	0.44			dB

Electrical Specification Notes:

The Insertion Loss data above is based on the performance specifications of the coax and connectors used in this assembly. The Insertion Loss includes an estimated insertion loss of 0.1 dB per connector.

Mechanical Specifications

Cable Assembly

Length*	48 in [121.92 cm]
Weight	0.499 lbs [226.34 g]

Cable

Cable Type	RG142
Impedance	50 Ohms
Inner Conductor Type	Solid
Inner Conductor Material and Plating	Copper Clad Steel, Silver
Dielectric Type	PTFE



Configuration:

- SHV Jack
- SHV Jack Bulkhead
- RG142

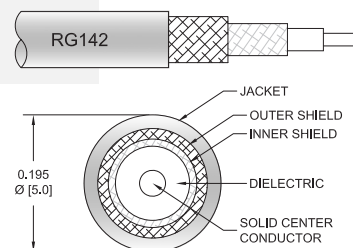
Features:

- Max Frequency 300 MHz
- 70% Phase Velocity
- Double Shielded
- FEP Jacket
- Dielectric withstanding of 5kV
- Shock, Moisture & Corrosion resistant
- Recessed contacts prevent shock hazards

Applications:

- General Purpose
- Laboratory Use
- Nuclear Instrumentation
- High Voltage Electrical Transmission
- Semiconductor Test

Cable Diagram:



Fairview Microwave
301 Leora Ln., Suite 100
Lewisville, TX 75056
Tel: 1-800-715-4396 / (972) 649-6678
Fax: (972) 649-6689
www.fairviewmicrowave.com
sales@fairviewmicrowave.com

Number of Shields	2
Shield Layer 1	Silver Plated Copper Braid
Shield Layer 2	Silver Plated Copper Braid
Jacket Material	FEP, Tan
Jacket Diameter	0.195 in [4.95 mm]

Repeated Minimum Bend Radius	1 in [25.4 mm]
------------------------------	----------------

Connectors

Description	Connector 1	Connector 2
Type	SHV Jack	SHV Jack
Mount Method		Bulkhead
Specification	MIL-STD-348B	MIL-STD-348B
Impedance	50 Ohms	50 Ohms
Contact Material & Plating	Brass, Gold over Nickel over copper	Brass, Gold over Nickel over copper
Dielectric Type	Teflon	Teflon
Body Material & Plating	Brass, Tinned Copper	Brass, Tinned Copper
Coupling Nut Material & Plating		Brass, Tinned Copper
Hex Size		7/16 Inch

Environmental Specifications

Temperature

Operating Range	-55 to +165 deg C
-----------------	-------------------

Ingress Protection (IP) Rating	IP67 Rated
--------------------------------	------------

Compliance Certifications (see [product page](#) for current document)

Plotted and Other Data

Notes:

How to Order

Part Number Configuration:

FMCA3157 - xx uu

cm = Centimeters
 <blank> = Inches
 Length

Example: FMCA3157-12 = 12 inches long cable
 FMCA3157-100cm = 100 cm long cable

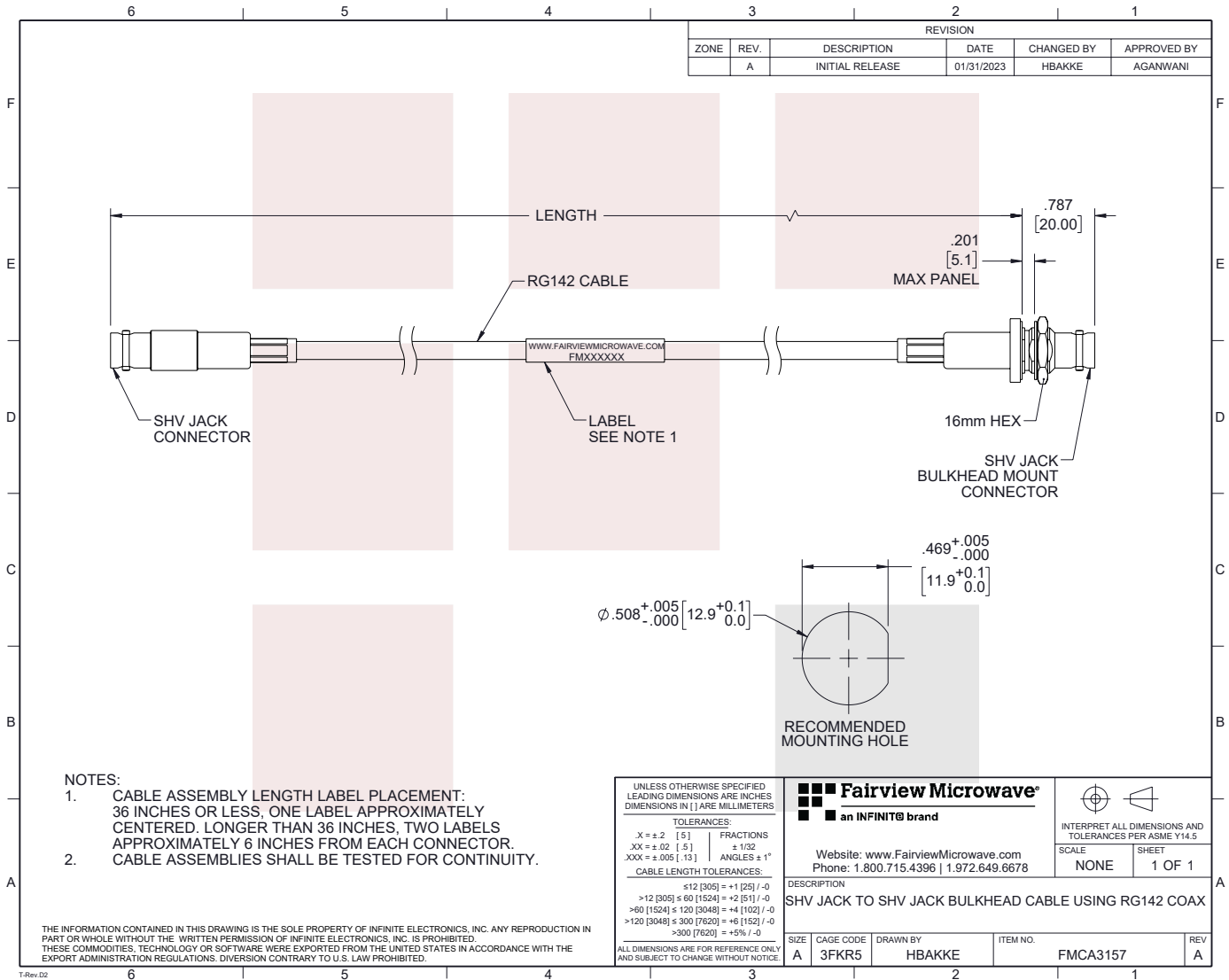
SHV Jack to SHV Jack Bulkhead Cable RG-142 Coax in 48 Inch from Fairview Microwave has same day shipment for domestic and International orders. Our RF, microwave and millimeter wave products maintain a 99% availability and are part of the broadest selection in the industry.

Click the following link to obtain additional part information: [SHV Jack to SHV Jack Bulkhead Cable RG-142 Coax in 48 Inch FMCA3157-48](https://www.fairviewmicrowave.com/shv-jack-to-shv-jack-bulkhead-cable-rg142-coax-in-48-inch-fmca3157-48-p.aspx)

URL: <https://www.fairviewmicrowave.com/shv-jack-to-shv-jack-bulkhead-cable-rg142-coax-in-48-inch-fmca3157-48-p.aspx>

The information contained in this document is accurate to the best of our knowledge and representative of the part described herein. It may be necessary to make modifications to the part and/or the documentation of the part, in order to implement improvements. Fairview Microwave reserves the right to make such changes as required. Unless otherwise stated, all specifications are nominal. Fairview Microwave does not make any representation or warranty regarding the suitability of the part described herein for any particular purpose, and Fairview Microwave does not assume any liability arising out of the use of any part or documentation.





SHV Jack to SHV Jack Bulkhead Cable RG-142 Coax in 48 Inch