

## RA SHV Plug to RA SHV Plug Cable RG-142 Coax in 36 Inch

The RA SHV plug to RA SHV plug 36 inch cable using RG-142 coax, part number FMCA3155-36, from Fairview Microwave is in-stock and ships same day. This Fairview SHV to SHV cable assembly has a plug to plug gender configuration with 50 ohm flexible RG142 coax. Fairview Microwave's flexible RF cable assemblies are ideal for applications where tight bends and continual flexure are required. The FMCA3155-36 SHV plug to SHV plug cable assembly operates to 300 MHz. The right angle SHV interfaces on the RG142 cable allow for easier connections in tight spaces. The double shielding of this Fairview cable assembly provides excellent shielding effectiveness. Safety high voltage connectors are designed to allow signal transmission with high voltage ratings without safety risk for the operators. Both the pin and socket contacts are securely recessed inside the insulation to guard against potential electrical shock when live unmated connectors are handled.

Custom versions of most RF cable assemblies can be built and shipped same day. Custom cable assembly lengths can be obtained by specifying the desired length on the web site at time of order or by contacting a sales representative. Other RF cable assembly value added services including connector orientation or clocking, heat shrink booting and labeling are also available. RF testing can also be performed to document the electrical performance of your cable assembly.

### Electrical Specifications

Description	Min	Typ	Max	Units
Frequency Range	DC		300	MHz
Velocity of Propagation		70		%
Capacitance		29.4 [96.46]		pF/ft [pF/m]
Operating Voltage (AC)			1,900	Vrms

### Performance by Frequency

Description	F1	F2	F3	F4	F5	Units
Frequency	100	250	300			MHz
Insertion Loss (Typ.)	0.52	0.57	0.58			dB

#### Electrical Specification Notes:

The Insertion Loss data above is based on the performance specifications of the coax and connectors used in this assembly. The Insertion Loss includes an estimated insertion loss of 0.2 dB per connector.

### Mechanical Specifications

#### Cable Assembly

Length*	36 in [914.4 mm]
Weight	0.698 lbs [316.61 g]

#### Cable

Cable Type	RG142
Impedance	50 Ohms
Inner Conductor Type	Solid
Inner Conductor Material and Plating	Copper Clad Steel, Silver
Dielectric Type	PTFE
Number of Shields	2
Shield Layer 1	Silver Plated Copper Braid



### Configuration:

- SHV Plug Right Angle
- SHV Plug Right Angle
- RG142

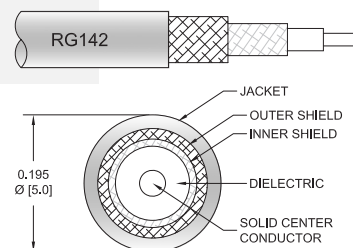
### Features:

- Max Frequency 300 MHz
- 70% Phase Velocity
- Double Shielded
- FEP Jacket
- Dielectric withstanding of 5kV
- Shock, Moisture & Corrosion resistant
- Recessed contacts prevent shock hazards

### Applications:

- General Purpose
- Laboratory Use
- Nuclear Instrumentation
- High Voltage Electrical Transmission
- Semiconductor Test

### Cable Diagram:



Fairview Microwave  
301 Leora Ln., Suite 100  
Lewisville, TX 75056  
Tel: 1-800-715-4396 / (972) 649-6678  
Fax: (972) 649-6689  
[www.fairviewmicrowave.com](http://www.fairviewmicrowave.com)  
[sales@fairviewmicrowave.com](mailto:sales@fairviewmicrowave.com)

Shield Layer 2	Silver Plated Copper Braid
Jacket Material	FEP, Tan
Jacket Diameter	0.195 in [4.95 mm]

Repeated Minimum Bend Radius	1 in [25.4 mm]
------------------------------	----------------

### Connectors

Description	Connector 1	Connector 2
Type	SHV Plug	SHV Plug
Specification	MIL-STD-348B	MIL-STD-348B
Impedance	50 Ohms	50 Ohms
Contact Material & Plating	Brass, Gold over Nickel over copper	Brass, Gold over Nickel over copper
Dielectric Type	Teflon	Teflon
Body Material & Plating	Brass, Tinned Copper	Brass, Tinned Copper
Coupling Nut Material & Plating	Brass, Tinned Copper	Brass, Tinned Copper
Hex Size	7/16 Inch	7/16 Inch

### Environmental Specifications

#### Temperature

Operating Range	-55 to +165 deg C
-----------------	-------------------

**Compliance Certifications** (see [product page](#) for current document)

### Plotted and Other Data

Notes:

### How to Order

Part Number Configuration:

**FMCA3155 - xx uu**

cm = Centimeters  
 <blank> = Inches  
 Length

Example: FMCA3155-12 = 12 inches long cable  
 FMCA3155-100cm = 100 cm long cable

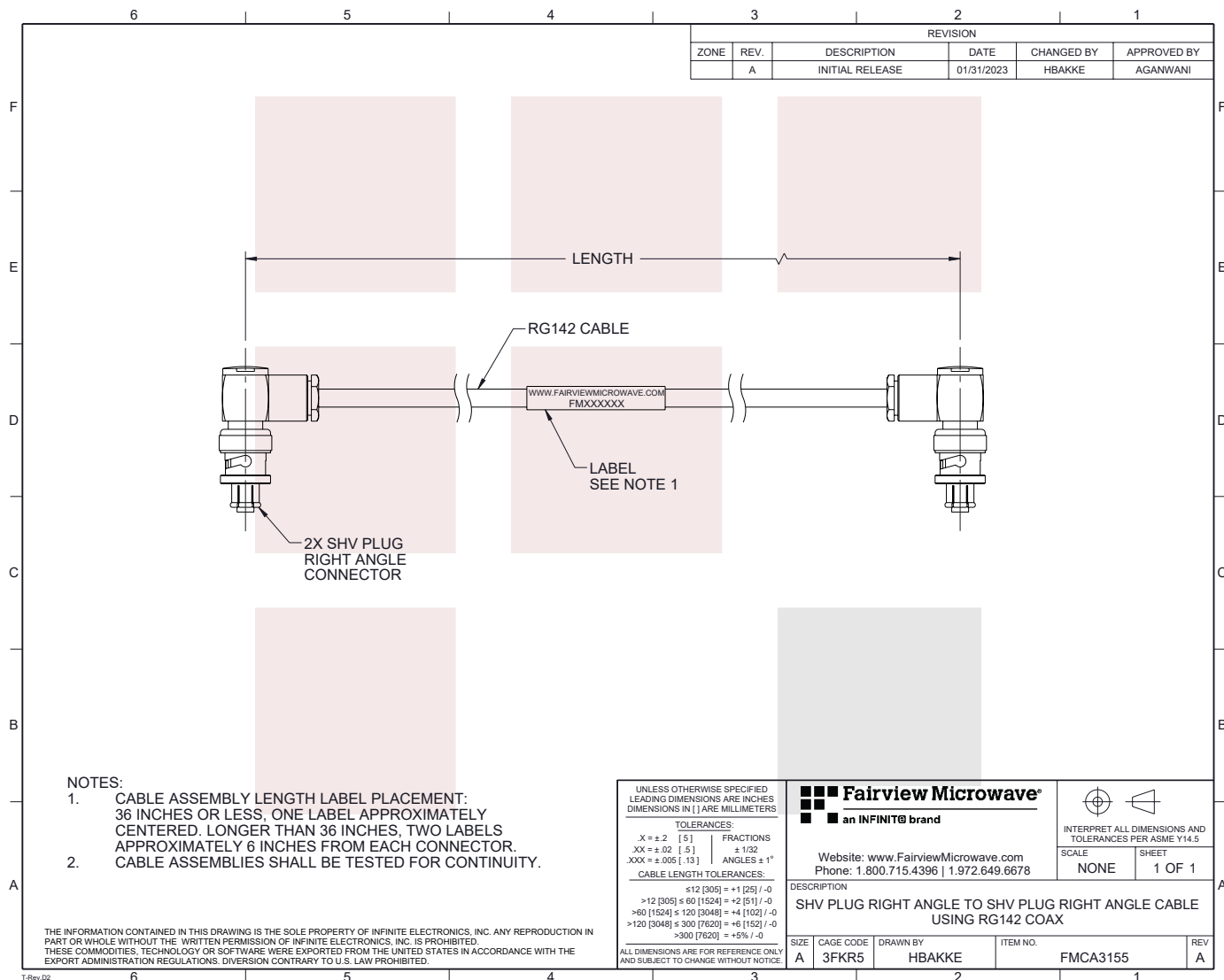
RA SHV Plug to RA SHV Plug Cable RG-142 Coax in 36 Inch from Fairview Microwave has same day shipment for domestic and International orders. Our RF, microwave and millimeter wave products maintain a 99% availability and are part of the broadest selection in the industry.

Click the following link to obtain additional part information: [RA SHV Plug to RA SHV Plug Cable RG-142 Coax in 36 Inch FMCA3155-36](https://www.fairviewmicrowave.com/ra-shv-plug-to-ra-shv-plug-cable-rg142-coax-in-36-inch-fmca3155-36-p.aspx)

URL: <https://www.fairviewmicrowave.com/ra-shv-plug-to-ra-shv-plug-cable-rg142-coax-in-36-inch-fmca3155-36-p.aspx>

The information contained in this document is accurate to the best of our knowledge and representative of the part described herein. It may be necessary to make modifications to the part and/or the documentation of the part, in order to implement improvements. Fairview Microwave reserves the right to make such changes as required. Unless otherwise stated, all specifications are nominal. Fairview Microwave does not make any representation or warranty regarding the suitability of the part described herein for any particular purpose, and Fairview Microwave does not assume any liability arising out of the use of any part or documentation.





RA SHV Plug to RA SHV Plug Cable RG-142 Coax in 36 Inch