

SMA Male to SMA Male Cable RG405 Type .086 Coax



FMCA2947

Configuration

- Connector 1: SMA Male
- Connector 2: SMA Male
- Cable Type: FM-SR086CU-STR
- Coax Flex Type: Semi-Rigid

Features

- Max Frequency 18 GHz

Applications

- General Purpose
- Laboratory Use

Description

The SMA male to SMA male cable using RG405 type .086 coax, part number FMCA2947, from Fairview Microwave is in-stock and ships same day. This Fairview SMA to SMA cable assembly has a male to male gender configuration with 50 ohm semi-rigid FM-SR086CU-STR coax. Fairview Microwave's semi-rigid RF cable assemblies are ideal for high performance applications and can be formed, using proper tooling, to the routing pattern required. The FMCA2947 SMA male to SMA male cable assembly operates to 18 GHz.

Custom versions of most RF cable assemblies can be built and shipped same day. Custom cable assembly lengths can be obtained by specifying the desired length on the web site at time of order or by contacting a sales representative. Other RF cable assembly value added services including connector orientation or clocking, heat shrink booting and labeling are also available. RF testing can also be performed to document the electrical performance of your cable assembly.

Electrical Specifications

Description	Minimum	Typical	Maximum	Units
Frequency Range	DC		18	GHz
VSWR			1.5:1	

Specifications by Frequency

Description	F1	F2	F3	F4	F5	Units
Frequency	1	2	4.5	9	18	GHz
Insertion Loss (Typ.)	0.22	0.284	0.445	0.735	1.12	dB/ft
	0.72	0.93	1.46	2.41	3.67	dB/m

Electrical Specification Notes:

Insertion Loss does not include the loss of the connectors. Insertion Loss is estimated as 0.1 dB per connector.

Mechanical Specifications

Cable Assembly

Weight 0.029 lbs [13.15 g]

SMA Male to SMA Male Cable RG405 Type .086 Coax

FMCA2947



Cable	
Cable Type	FM-SR086CU-STR
Impedance	50 Ohms
Jacket Material	Tan

Connectors

Description	Connector 1	Connector 2
Type	SMA Male	SMA Male
Impedance	50 Ohms	50 Ohms
Configuration	Straight	Straight
Body Material and Plating	Brass, Gold	Brass, Gold
Coupling Nut Material and Plating	Passivated Stainless Steel	Passivated Stainless Steel
Hex Size	5/16 in.	5/16 in.
Torque	8 in-lbs 0.9 Nm	8 in-lbs 0.9 Nm

Mechanical Specification Notes:
Maximum length using the straight semi rigid coax is 5ft. For lengths greater than 5ft, please contact us

Environmental Specifications

Compliance Certifications (see [product page](#) for current document)

Plotted and Other Data

Notes:
Values at 25°C, sea level.

SMA Male to SMA Male Cable RG405 Type .086 Coax



FMCA2947

Typical Performance Data

How to Order

Part Number Configuration:

FMCA2947

- xx

uu

Unit of Measure:

cm = Centimeters

<blank> = Inches

Length

Base Number

Example: FMCA2947-12 = 12 inches long cable
FMCA2947-100cm = 100 cm long cable

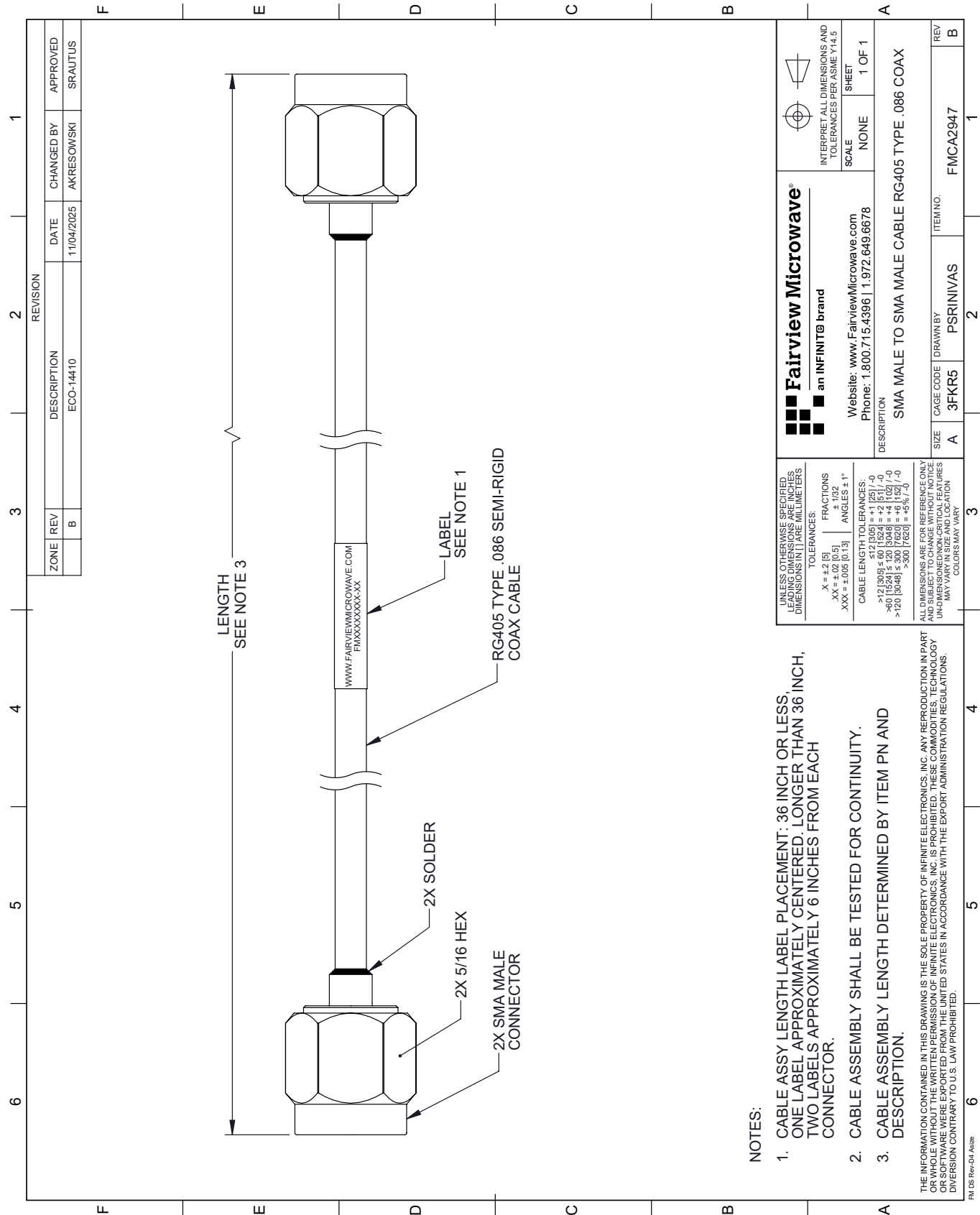
SMA Male to SMA Male Cable RG405 Type .086 Coax from Fairview Microwave is in-stock and available to ship same-day. All of our RF/microwave products are available off-the-shelf from our ISO 9001:2008 certified facilities in Lewisville, Texas. Fairview Microwave is RF on-demand.

For additional information on this product, please click the following link: [SMA Male to SMA Male Cable RG405 Type .086 Coax FMCA2947](#)

URL: <https://www.fairviewmicrowave.com/sma-male-to-sma-male-cable-rg405-type-.086-coax-fmca2947-p.aspx>

The information contained within this document is accurate to the best of our knowledge and representative of the part described herein. It may be necessary to make modifications to the part and/or the documentation of the part in order to implement improvements. Fairview Microwave reserves the right to make such changes as required. Unless otherwise stated, all specifications are nominal. Fairview Microwave does not make any representation or warranty regarding the suitability of the part described herein for any particular purpose, and Fairview Microwave does not assume liability arising out of the use of any part or document.

FMCA2947 CAD Drawing
SMA Male to SMA Male Cable RG405 Type .086 Coax



NOTES:

1. CABLE ASSY LENGTH LABEL PLACEMENT: 36 INCH OR LESS, ONE LABEL APPROXIMATELY CENTERED. LONGER THAN 36 INCH, TWO LABELS APPROXIMATELY 6 INCHES FROM EACH CONNECTOR.
2. CABLE ASSEMBLY SHALL BE TESTED FOR CONTINUITY.
3. CABLE ASSEMBLY LENGTH DETERMINED BY ITEM PN AND DESCRIPTION.

THE INFORMATION CONTAINED IN THIS DRAWING IS THE SOLE PROPERTY OF INFINITE ELECTRONICS, INC. ANY REPRODUCTION IN PART OR WHOLE WITHOUT THE WRITTEN PERMISSION OF INFINITE ELECTRONICS, INC. IS PROHIBITED. THESE COMMODITIES, TECHNOLOGY OR SOFTWARE WERE EXPORTED FROM THE UNITED STATES IN ACCORDANCE WITH THE EXPORT ADMINISTRATION REGULATIONS. DIVISION CONTRARY TO U.S. LAW PROHIBITED.

UNLESS OTHERWISE SPECIFIED, DIMENSIONS ARE IN INCHES. DIMENSIONS IN [] ARE MILLIMETERS.		TOLERANCES:		FRACTIONS		ANGLES	
.X = ±.2 [5]		.XX = ±.02 [0.5]		.XXX = ±.005 [0.13]		± 1/32	
CABLE LENGTH TOLERANCES:		± 1/32		± 1/32		± 1°	
>12 [305] ≤ 60 [1524] = ±.1 [25] / -0		±.1 [25] / -0		±.1 [25] / -0		±.1 [25] / -0	
>60 [1524] ≤ 120 [3048] = ±.1 [25] / -0		±.1 [25] / -0		±.1 [25] / -0		±.1 [25] / -0	
>120 [3048] ≤ 300 [7620] = ±.1 [25] / -0		±.1 [25] / -0		±.1 [25] / -0		±.1 [25] / -0	
ALL DIMENSIONS ARE FOR REFERENCE ONLY. DIMENSIONS OF NON-CRITICAL FEATURES MAY VARY IN SIZE AND LOCATION. COLORS MAY VARY.							

Fairview Microwave® an INFINITI® brand		Website: www.FairviewMicrowave.com Phone: 1.800.715.4396 1.972.649.6678		INTERPRET ALL DIMENSIONS AND TOLERANCES PER ASME Y14.5	
DESCRIPTION		SMA MALE TO SMA MALE CABLE RG405 TYPE .086 COAX		SCALE	
SIZE		CAGE CODE		SHEET	
A		3FKR5		1 OF 1	
DRAWN BY		ITEM NO.			
PSRINIVAS		FMCA2947			
REV					
B					