

SMA Male to SMA Male Cable RG405 Type .086 Coax in 24 Inch



FMCA2947-24

Configuration

- Connector 1: SMA Male
- Connector 2: SMA Male
- Cable Type: FM-SR086CU-STR
- Coax Flex Type: Semi-Rigid

Features

- Max Frequency 18 GHz

Applications

- General Purpose
- Laboratory Use

Description

The SMA male to SMA male 24 inch cable using RG405 type .086 coax, part number FMCA2947-24, from Fairview Microwave is in-stock and ships same day. This Fairview SMA to SMA cable assembly has a male to male gender configuration with 50 ohm semi-rigid FM-SR086CU-STR coax. Fairview Microwave's semi-rigid RF cable assemblies are ideal for high performance applications and can be formed, using proper tooling, to the routing pattern required. The FMCA2947-24 SMA male to SMA male cable assembly operates to 18 GHz.

Custom versions of most RF cable assemblies can be built and shipped same day. Custom cable assembly lengths can be obtained by specifying the desired length on the web site at time of order or by contacting a sales representative. Other RF cable assembly value added services including connector orientation or clocking, heat shrink booting and labeling are also available. RF testing can also be performed to document the electrical performance of your cable assembly.

Electrical Specifications

Description	Minimum	Typical	Maximum	Units
Frequency Range	DC		18	GHz
VSWR			1.5:1	

Specifications by Frequency

Description	F1	F2	F3	F4	F5	Units
Frequency	1	2	4.5	9	18	GHz
Insertion Loss (Typ.)	0.64	0.77	1.09	1.67	2.44	dB

Electrical Specification Notes:

The Insertion Loss data above is based on the performance specifications of the coax and connectors used in this assembly. The Insertion Loss includes an estimated insertion loss of 0.1 dB per connector.

Mechanical Specifications

Cable Assembly

Length	24 in [609.6 mm]
Width/Diameter	0.5 in [12.7 mm]
Weight	0.042 lbs [19.05 g]

SMA Male to SMA Male Cable RG405 Type
.086 Coax in 24 Inch



FMCA2947-24

Cable

Cable Type	FM-SR086CU-STR
Impedance	50 Ohms
Jacket Material	Tan

Connectors

Description	Connector 1	Connector 2
Type	SMA Male	SMA Male
Impedance	50 Ohms	50 Ohms
Configuration	Straight	Straight
Body Material and Plating	Brass, Gold	Brass, Gold
Coupling Nut Material and Plating	Passivated Stainless Steel	Passivated Stainless Steel
Hex Size	5/16 in.	5/16 in.
Torque	8 in-lbs 0.9 Nm	8 in-lbs 0.9 Nm

Environmental Specifications

Compliance Certifications (see [product page](#) for current document)

Plotted and Other Data

Notes:
Values at 25°C, sea level.

SMA Male to SMA Male Cable RG405 Type
.086 Coax in 24 Inch



FMCA2947-24

Typical Performance Data

How to Order

Part Number Configuration:

FMCA2947

- xx

uu

Unit of Measure:
cm = Centimeters
<blank> = Inches
Length
Base Number

Example: FMCA2947-12 = 12 inches long cable
FMCA2947-100cm = 100 cm long cable

SMA Male to SMA Male Cable RG405 Type .086 Coax in 24 Inch from Fairview Microwave is in-stock and available to ship same-day. All of our RF/microwave products are available off-the-shelf from our ISO 9001:2008 certified facilities in Lewisville, Texas. Fairview Microwave is RF on-demand.

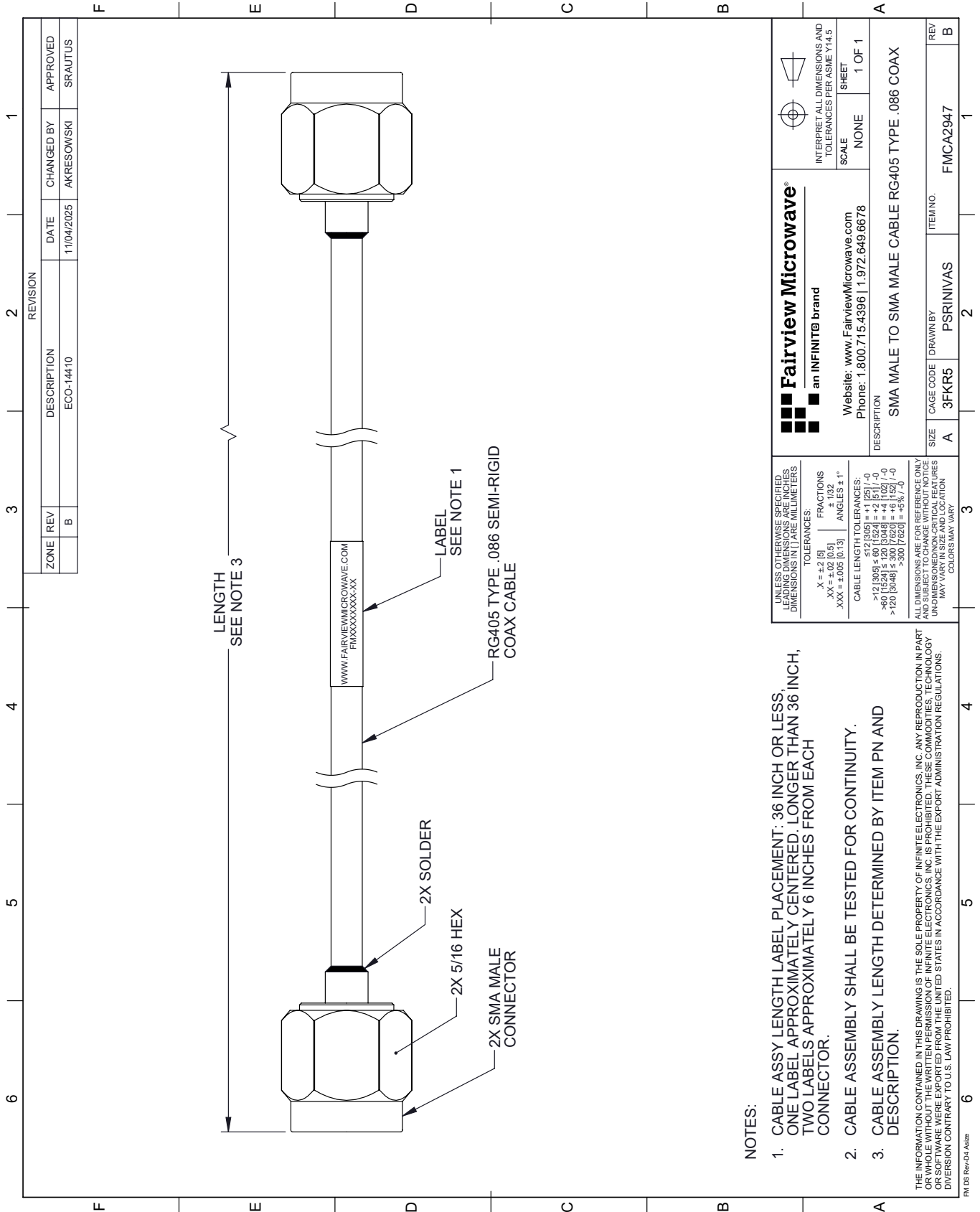
For additional information on this product, please click the following link: [SMA Male to SMA Male Cable RG405 Type .086 Coax in 24 Inch FMCA2947-24](https://www.fairviewmicrowave.com/sma-male-to-sma-male-cable-rg405-type-.086-coax-fmca2947-24)

URL: <https://www.fairviewmicrowave.com/sma-male-to-sma-male-cable-rg405-type-.086-coax-fmca2947-24-p.aspx>

The information contained within this document is accurate to the best of our knowledge and representative of the part described herein. It may be necessary to make modifications to the part and/or the documentation of the part in order to implement improvements. Fairview Microwave reserves the right to make such changes as required. Unless otherwise stated, all specifications are nominal. Fairview Microwave does not make any representation or warranty regarding the suitability of the part described herein for any particular purpose, and Fairview Microwave does not assume liability arising out of the use of any part or document.

FMCA2947-24 CAD Drawing

SMA Male to SMA Male Cable RG405 Type .086 Coax in 24 Inch



NOTES:

1. CABLE ASSY LENGTH LABEL PLACEMENT: 36 INCH OR LESS, ONE LABEL APPROXIMATELY CENTERED. LONGER THAN 36 INCH, TWO LABELS APPROXIMATELY 6 INCHES FROM EACH CONNECTOR.
2. CABLE ASSEMBLY SHALL BE TESTED FOR CONTINUITY.
3. CABLE ASSEMBLY LENGTH DETERMINED BY ITEM PN AND DESCRIPTION.

THE INFORMATION CONTAINED IN THIS DRAWING IS THE SOLE PROPERTY OF INFINITE ELECTRONICS, INC. ANY REPRODUCTION IN PART OR WHOLE WITHOUT THE WRITTEN PERMISSION OF INFINITE ELECTRONICS, INC. IS PROHIBITED. THESE COMMODITIES, TECHNOLOGY OR SOFTWARE WERE EXPORTED FROM THE UNITED STATES IN ACCORDANCE WITH THE EXPORT ADMINISTRATION REGULATIONS. DIVISION CONTRARY TO U.S. LAW PROHIBITED.

FM DS Rev-D4 Alt2b

REVISION		DATE	CHANGED BY	APPROVED
ZONE	REV			
	B	11/04/2025	AKRESOWSKI	SRAUTUS
DESCRIPTION				
ECO-14410				

<p>Fairview Microwave® an INFINIT® brand</p> <p>Website: www.FairviewMicrowave.com Phone: 1.800.715.4396 1.972.649.6678</p>		<p>INTERPRET ALL DIMENSIONS AND TOLERANCES PER ASME Y14.5</p> <p>SCALE: NONE</p> <p>SHEET: 1 OF 1</p>
DESCRIPTION: SMA MALE TO SMA MALE CABLE RG405 TYPE .086 COAX		
SIZE: A	CAGE CODE: 3FKR5	ITEM NO: FMCA2947
DRAWN BY: PSRINIVAS		REV: B

UNLESS OTHERWISE SPECIFIED, LEADING DIMENSIONS ARE IN INCHES. DIMENSIONS IN [] ARE MILLIMETERS.

TOLERANCES:
.X = ±.2 [5]
.XX = ±.02 [0.5]
.XXX = ±.005 [0.13]

FRACTIONS: ± 1/32
ANGLES ± 1°

CABLE LENGTH TOLERANCES:
<12 [305] ≤ 60 [1524] = ±.1 [25] / -0
>60 [1524] ≤ 120 [3048] = ±.4 [102] / -0
>120 [3048] ≤ 300 [7620] = ±.5 [12.7] / -0
>300 [7620] = ±.5 [12.7] / -0

ALL DIMENSIONS ARE FOR REFERENCE ONLY. DIMENSIONS OF CRITICAL FEATURES MAY VARY IN SIZE AND LOCATION. COLORS MAY VARY.