

## Snap-On BMA Jack to RA Slide-On BMA Jack 2 Hole Flange Cable Tinned Copper RG402 Type .141 Coax in 60 Inch Length

The BMA jack snap-on to RA BMA jack slide-on 2 hole flange 60 inch cable using Tinned Copper RG402 type .141 coax, part number FMCA2916-60, from Fairview Microwave is in-stock and ships same day. This Fairview BMA to BMA cable assembly has a jack to jack gender configuration with 50 ohm semi-rigid FM-SR141CUTN-STR coax. Fairview Microwave's semi-rigid RF cable assemblies are ideal for high performance applications and can be formed, using proper tooling, to the routing pattern required. The FMCA2916-60 BMA jack to BMA jack cable assembly operates to 12.4 GHz. The right angle BMA interface on the FM-SR141CUTN-STR cable allows for easier connections in tight spaces. Our RF cable assembly with BMA 2 hole flange interface allows designers to create external connections on their product enclosures, and can be used in a variety of other rack mount and panel mount applications.

Custom versions of most RF cable assemblies can be built and shipped same day. Custom cable assembly lengths can be obtained by specifying the desired length on the web site at time of order or by contacting a sales representative. Other RF cable assembly value added services including connector orientation or clocking, heat shrink booting and labeling are also available. RF testing can also be performed to document the electrical performance of your cable assembly.

### Electrical Specifications

Description	Min	Typ	Max	Units
Frequency Range	DC		12.4	GHz
VSWR			1.5:1	
Velocity of Propagation		69.5		%

### Performance by Frequency

Description	F1	F2	F3	F4	F5	Units
Frequency	1	2.5	5	12.4		GHz
Insertion Loss (Typ.)	0.9	1.18	1.63	2.85		dB

#### Electrical Specification Notes:

The Insertion Loss data above is based on the performance specifications of the coax cable and connectors used in this assembly. The Insertion Loss includes an estimated insertion loss of 0.1 dB for the straight connector and 0.2 dB for the right angle connector.

### Mechanical Specifications

#### Cable Assembly

Length*	60 in [152.4 cm]
Weight	0.181 lbs [82.1 g]

#### Cable

Cable Type	FM-SR141CUTN-STR
Impedance	50 Ohms
Inner Conductor Type	Solid
Inner Conductor Material and Plating	Copper Clad Steel, Silver
Dielectric Type	PTFE
Outer Conductor Material and Plating	Tinned Copper



### Configuration:

- Snap-On BMA Jack
- Slide-On BMA Jack Right Angle 2 Hole Flange
- FM-SR141CUTN-STR

### Features:

- Max Frequency 12.4 GHz
- 69.5% Phase Velocity
- 1000 Mating Cycles

### Applications:

- General Purpose
- Laboratory Use

Fairview Microwave  
301 Leora Ln., Suite 100  
Lewisville, TX 75056  
Tel: 1-800-715-4396 / (972) 649-6678  
Fax: (972) 649-6689  
[www.fairviewmicrowave.com](http://www.fairviewmicrowave.com)  
[sales@fairviewmicrowave.com](mailto:sales@fairviewmicrowave.com)

One Time Minimum Bend Radius      1 in [25.4 mm]

**Connectors**

Description	Connector 1	Connector 2
Type	BMA Jack	BMA Jack
Mount Method		2 Hole Flange
Impedance	50 Ohms	50 Ohms
Connection Method	Snap-On	Slide-On
Mating Cycles	1,000	1,000
Contact Material & Plating	Beryllium Copper, Gold	Beryllium Copper, Gold
Contact Plating Spec.	51.18μ in. minimum	
Dielectric Type	PTFE	PTFE
Outer Cond Material & Plating	Beryllium Copper, Gold	Beryllium Copper, Gold
Body Material & Plating	Stainless Steel, Gold	Brass, Tri-Metal
Body Plating Spec.	19.68μ in. minimum	

**Environmental Specifications**

**Temperature**

Operating Range      -40 to +100 deg C

**Compliance Certifications** (see [product page](#) for current document)

**Plotted and Other Data**

Notes:

**How to Order**

Part Number Configuration:

**FMCA2916 - xx uu**

cm = Centimeters  
<blank> = Inches

Length

Example: FMCA2916-12 = 12 inches long cable  
FMCA2916-100cm = 100 cm long cable

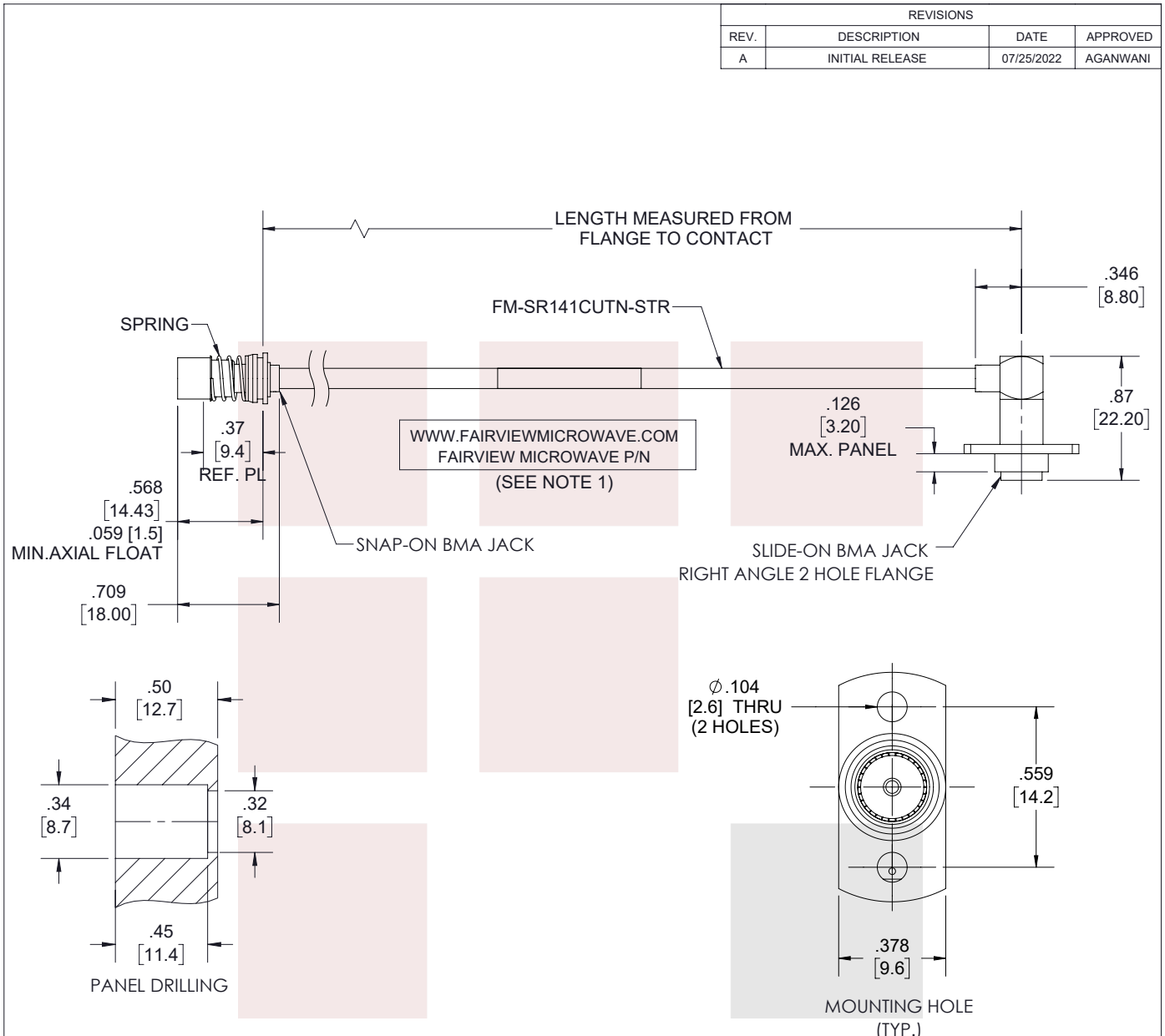
Snap-On BMA Jack to RA Slide-On BMA Jack 2 Hole Flange Cable Tinned Copper RG402 Type .141 Coax in 60 Inch Length from Fairview Microwave has same day shipment for domestic and International orders. Our RF, microwave and millimeter wave products maintain a 99% availability and are part of the broadest selection in the industry.

Click the following link to obtain additional part information: [Snap-On BMA Jack to RA Slide-On BMA Jack 2 Hole Flange Cable Tinned Copper RG402 Type .141 Coax in 60 Inch Length FMCA2916-60](https://www.fairviewmicrowave.com/snap-on-bma-jack-to-ra-slide-on-bma-jack-2-hole-flange-cable-rg402-type-.141-coax-fmca2916-60)

URL: <https://www.fairviewmicrowave.com/snap-on-bma-jack-to-ra-slide-on-bma-jack-2-hole-flange-cable-rg402-type-.141-coax-fmca2916-60-p.aspx>

The information contained in this document is accurate to the best of our knowledge and representative of the part described herein. It may be necessary to make modifications to the part and/or the documentation of the part, in order to implement improvements. Fairview Microwave reserves the right to make such changes as required. Unless otherwise stated, all specifications are nominal. Fairview Microwave does not make any representation or warranty regarding the suitability of the part described herein for any particular purpose, and Fairview Microwave does not assume any liability arising out of the use of any part or documentation.





THESE COMMODITIES, TECHNOLOGY OR SOFTWARE WERE EXPORTED FROM THE UNITED STATES IN ACCORDANCE WITH THE EXPORT ADMINISTRATION REGULATIONS. DIVERSION CONTRARY TO U.S. LAW PROHIBITED.

TITLE

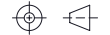
Snap-On BMA Jack to RA Slide-On BMA Jack 2 Hole Flange Cable Tinned Copper RG402 Type .141 Coax in 60 Inch Length

UNLESS OTHERWISE SPECIFIED LEADING DIMENSIONS ARE INCHES  
DIMENSIONS IN [ ] ARE MILLIMETERS

TOLERANCES: CABLE LENGTH (L) TOLERANCES:

.X = ±.2 [5.08]	FRACTIONS ± 1/32	L ≤ 12 [305] = +1 [25] / -0
.XX = ±.02 [.51]	ANGLES ± 1°	12 [305] < L ≤ 60 [1524] = +2 [51] / -0
.XXX = ±.005 [.13]		60 [1524] < L ≤ 120 [3048] = +4 [102] / -0
		120 [3048] < L ≤ 300 [7620] = +6 [152] / -0
		300 [7620] < L = +5%L / -0

THIRD-ANGLE PROJECTION



THE INFORMATION AND DESIGN IN THIS DOCUMENT IS THE PROPERTY OF FAIRVIEW MICROWAVE CORPORATION. ALL RIGHTS RESERVED.

SHEET 1 OF 1

ALL DIMENSIONS SHOWN ARE FOR REFERENCE ONLY.

SCALE N/A

SIZE	CAGE CODE	DRAWN BY	ITEM NO.	REV
A	3FKR5	PSRINIVAS	FMCA2916	A

T-Rev.D