

RA QMA Male to QMA Female Bulkhead Cable RG402 Type .141 Coax in 36 Inch

The RA QMA male to QMA female bulkhead 36 inch cable using RG402 type .141 coax, part number FMCA2799-36, from Fairview Microwave is in-stock and ships same day. This Fairview QMA to QMA cable assembly has a male to female gender configuration with 50 ohm semi-rigid FM-SR141CU-STR coax. Fairview Microwave's semi-rigid RF cable assemblies are ideal for high performance applications and can be formed, using proper tooling, to the routing pattern required. The FMCA2799-36 QMA male to QMA female cable assembly operates to 18 GHz. The right angle QMA interface on the FM-SR141CU-STR cable allows for easier connections in tight spaces. Our RF cable assembly with QMA bulkhead interface allows designers to create external connections on their product enclosures, and can be used in a variety of other rack mount and panel mount applications.

Custom versions of most RF cable assemblies can be built and shipped same day. Custom cable assembly lengths can be obtained by specifying the desired length on the web site at time of order or by contacting a sales representative. Other RF cable assembly value added services including connector orientation or clocking, heat shrink booting and labeling are also available. RF testing can also be performed to document the electrical performance of your cable assembly.

Electrical Specifications

Description	Min	Typ	Max	Units
Frequency Range	DC		18	GHz
VSWR			1.5:1	
Velocity of Propagation		69.5		%

Performance by Frequency

Description	F1	F2	F3	F4	F5	Units
Frequency	1	2	4.5	9	18	GHz
Insertion Loss (Typ.)	0.66	0.77	1.05	1.54	2.25	dB

Electrical Specification Notes:

The Insertion Loss data above is based on the performance specifications of the coax cable and connectors used in this assembly. The Insertion Loss includes an estimated insertion loss of 0.1 dB for the straight connector and 0.2 dB for the right angle connector.

Mechanical Specifications

Cable Assembly

Length*	36 in [914.4 mm]
Weight	0.124 lbs [56.25 g]

Cable

Cable Type	FM-SR141CU-STR
Impedance	50 Ohms
Inner Conductor Type	Solid
Inner Conductor Material and Plating	Copper Clad Steel, Silver
Dielectric Type	PTFE
Number of Shields	1
Outer Conductor Material and Plating	Copper



Configuration:

- QMA Male Right Angle
- QMA Female Bulkhead
- FM-SR141CU-STR

Features:

- Max Frequency 18 GHz
- 69.5% Phase Velocity
- 100 Mating Cycles

Applications:

- General Purpose
- Laboratory Use

Fairview Microwave
 301 Leora Ln., Suite 100
 Lewisville, TX 75056
 Tel: 1-800-715-4396 / (972) 649-6678
 Fax: (972) 649-6689
www.fairviewmicrowave.com
sales@fairviewmicrowave.com

Repeated Minimum Bend Radius 0.25 in [6.35 mm]

Connectors

Description	Connector 1	Connector 2
Type	QMA Male	QMA Female
Mount Method		Bulkhead
Impedance	50 Ohms	50 Ohms
Mating Cycles	100	100
Contact Material & Plating	Brass, Gold over Nickel	Beryllium Copper, Gold
Contact Plating Spec.	0.15 µm minimum	
Dielectric Type	PTFE	PTFE
Outer Cond Material & Plating	Spring Bronze, Tri-Metal	Brass, Gold
Body Material & Plating	Brass, Gold	Brass, Gold
Body Plating Spec.	0.15 µm minimum	

Environmental Specifications

Temperature

Operating Range -40 to +85 deg C

Compliance Certifications (see [product page](#) for current document)

Plotted and Other Data

Notes:

How to Order

Part Number Configuration:

FMCA2799 - xx uu

cm = Centimeters
 <blank> = Inches
 Length

Example: FMCA2799-12 = 12 inches long cable
 FMCA2799-100cm = 100 cm long cable

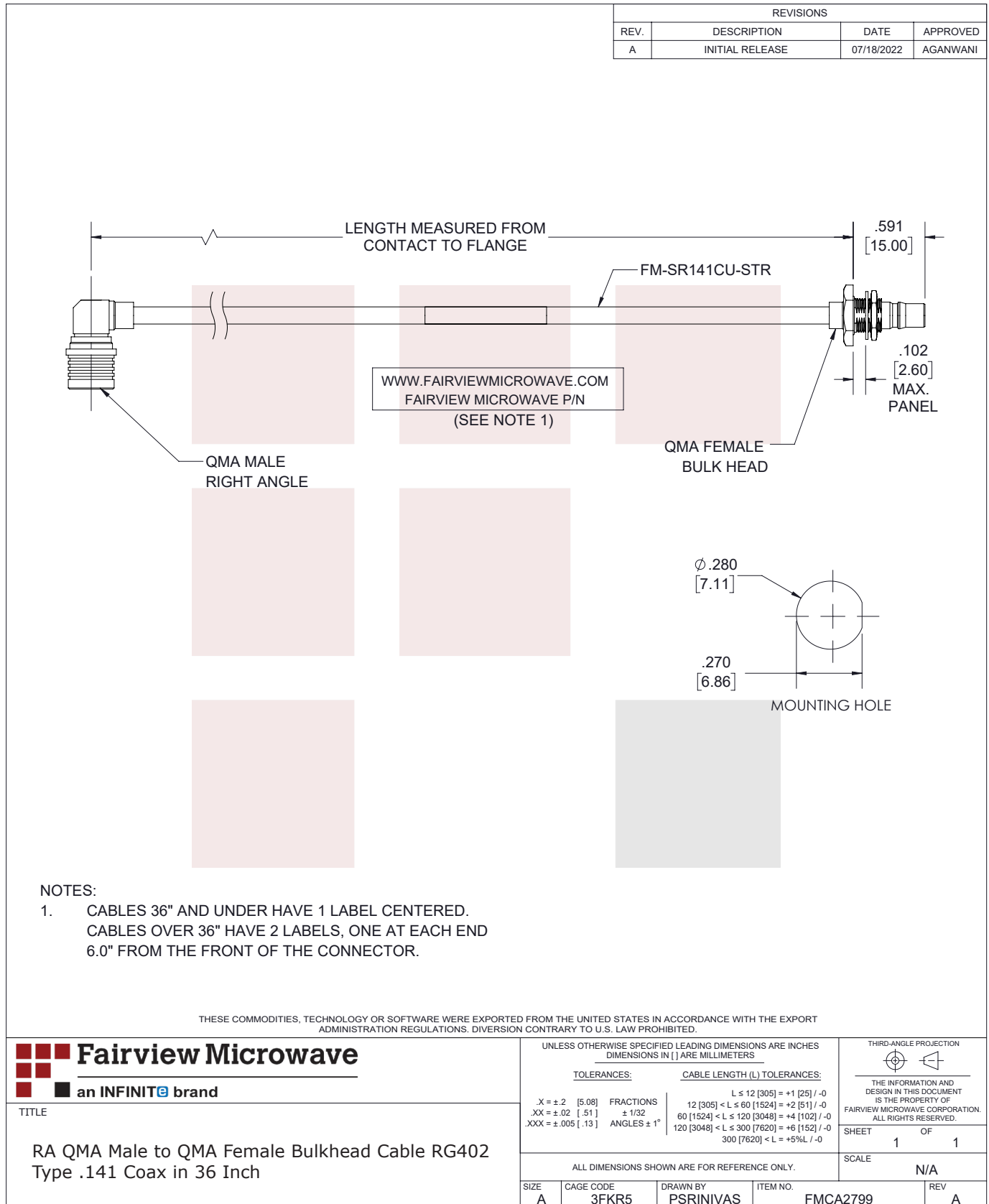
RA QMA Male to QMA Female Bulkhead Cable RG402 Type .141 Coax in 36 Inch from Fairview Microwave has same day shipment for domestic and International orders. Our RF, microwave and millimeter wave products maintain a 99% availability and are part of the broadest selection in the industry.

Click the following link to obtain additional part information: [RA QMA Male to QMA Female Bulkhead Cable RG402 Type .141 Coax in 36 Inch FMCA2799-36](https://www.fairviewmicrowave.com/ra-qma-male-to-qma-female-bulkhead-cable-rg402-type-.141-coax-fmca2799-36-p.aspx)

URL: <https://www.fairviewmicrowave.com/ra-qma-male-to-qma-female-bulkhead-cable-rg402-type-.141-coax-fmca2799-36-p.aspx>

The information contained in this document is accurate to the best of our knowledge and representative of the part described herein. It may be necessary to make modifications to the part and/or the documentation of the part, in order to implement improvements. Fairview Microwave reserves the right to make such changes as required. Unless otherwise stated, all specifications are nominal. Fairview Microwave does not make any representation or warranty regarding the suitability of the part described herein for any particular purpose, and Fairview Microwave does not assume any liability arising out of the use of any part or documentation.





T-Rev.D