

Low PIM 4.1/9.5 Mini DIN Male to
4.1/9.5 Mini DIN Male Cable TFT-5G-402 Coax in
50 CM Using Times Microwave Components



FMCA2332-50CM

Configuration

- Connector 1: 4.1/9.5 Mini DIN Male
- Connector 2: 4.1/9.5 Mini DIN Male
- Cable Type: TFT-5G-402
- Coax Flex Type: Flexible

Features

- Max Frequency 3 GHz
- Low PIM: -160 dBc Max
- Shielding Effectivity > 80 dB
- 76% Phase Velocity
- Double Shielded
- FEP Jacket

Applications

- General Purpose
- Laboratory Use
- Low PIM Applications
- Indoor and Outdoor Use
- Plenum Rated Applications

Description

The 4.1/9.5 Mini DIN male to 4.1/9.5 Mini DIN male 50 cm cable using TFT-5G-402 coax, part number FMCA2332-50CM, from Fairview Microwave is in-stock and ships same day. This Fairview 4.1/9.5 Mini DIN to 4.1/9.5 Mini DIN cable assembly has a male to male gender configuration with 50 ohm flexible TFT-5G-402 coax. Fairview Microwave’s flexible RF cable assemblies are ideal for applications where tight bends and continual flexure are required. Our low PIM design offers excellent passive intermodulation performance with PIM levels better than -160 dBc. The FMCA2332-50CM 4.1/9.5 Mini DIN male to 4.1/9.5 Mini DIN male cable assembly operates to 3 GHz. The double shielding of this Fairview cable assembly provides excellent shielding effectiveness of better than 80 dB.

Custom versions of most RF cable assemblies can be built and shipped same day. Custom cable assembly lengths can be obtained by specifying the desired length on the web site at time of order or by contacting a sales representative. Other RF cable assembly value added services including connector orientation or clocking, heat shrink booting and labeling are also available. RF testing can also be performed to document the electrical performance of your cable assembly.

Electrical Specifications

| Description | Minimum | Typical | Maximum | Units |
|--|---------|---------|---------|-------|
| Frequency Range | DC | | 3 | GHz |
| VSWR | | | 1.4:1 | |
| Velocity of Propagation | | 76 | | % |
| RF Shielding | 80 | | | dB |
| Passive Intermodulation | | | -160 | dBc |
| IM3 (2x43dBm Tones) at 850 MHz or 1900 MHz | | | | |

Low PIM 4.1/9.5 Mini DIN Male to
4.1/9.5 Mini DIN Male Cable TFT-5G-402 Coax in
50 CM Using Times Microwave Components



FMCA2332-50CM

Electrical Specifications

| Description | Minimum | Typical | Maximum | Units |
|-------------|---------|-------------|---------|--------------|
| Capacitance | | 26.7 [87.6] | | pF/ft [pF/m] |

Specifications by Frequency

| Description | F1 | F2 | F3 | F4 | F5 | Units |
|-----------------------|------|------|------|-----|------|-------|
| Frequency | 0.1 | 0.25 | 0.5 | 1 | 3 | GHz |
| Insertion Loss (Typ.) | 0.26 | 0.3 | 0.34 | 0.4 | 0.54 | dB |

Electrical Specification Notes:

The Insertion Loss data above is based on the performance specifications of the coax and connectors used in this assembly. The Insertion Loss includes an estimated insertion loss of 0.1 dB per connector.

Mechanical Specifications

Cable Assembly

| | |
|----------------|----------------------|
| Length | 19.68 in [499.87 mm] |
| Width/Diameter | 0.866 in [22 mm] |

Cable

| | |
|--------------------------------------|--------------------|
| Cable Type | TFT-5G-402 |
| Impedance | 50 Ohms |
| Inner Conductor Type | Solid |
| Inner Conductor Material and Plating | Copper |
| Dielectric Type | PTFE |
| Number of Shields | 2 |
| Jacket Material | FEP, Blue |
| Jacket Diameter | 0.16 in [4.06 mm] |
| One Time Minimum Bend Radius | 0.75 in [19.05 mm] |

Connectors

| Description | Connector 1 | Connector 2 |
|------------------------------------|-----------------------------|-----------------------------|
| Type | 4.1/9.5 Mini DIN Male | 4.1/9.5 Mini DIN Male |
| Impedance | 50 Ohms | 50 Ohms |
| Configuration | Straight | Straight |
| Contact Material and Plating | Brass, Silver | Brass, Silver |
| Contact Plating Specification | 5 µm | 5 µm |
| Dielectric Type | PTFE | PTFE |
| Body Material and Plating | Brass, Copper Clad Aluminum | Brass, Copper Clad Aluminum |
| Body Plating Specification | 2 µm | 2 µm |
| Coupling Nut Material and Plating | Brass, Nickel | Brass, Nickel |
| Coupling Nut Plating Specification | 5 µm | 5 µm |
| Torque | 106 in-lbs 11.98 Nm | 106 in-lbs 11.98 Nm |

Low PIM 4.1/9.5 Mini DIN Male to
4.1/9.5 Mini DIN Male Cable TFT-5G-402 Coax in
50 CM Using Times Microwave Components



FMCA2332-50CM

Environmental Specifications

Operating Range Temperature -40 to +85 deg C

Compliance Certifications (see [product page](#) for current document)

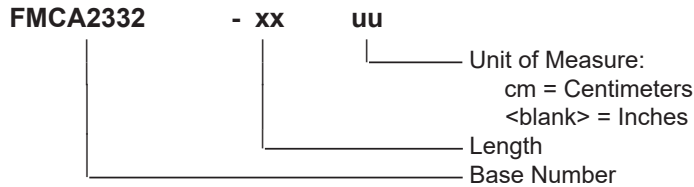
Plotted and Other Data

Notes:

Typical Performance Data

How to Order

Part Number Configuration:



Example: FMCA2332-12 = 12 inches long cable
FMCA2332-100cm = 100 cm long cable

Low PIM 4.1/9.5 Mini DIN Male to 4.1/9.5 Mini DIN Male Cable TFT-5G-402 Coax in 50 CM Using Times Microwave Components from Fairview Microwave is in-stock and available to ship same-day. All of our RF/microwave products are available off-the-shelf from our ISO 9001:2008 certified facilities in Lewisville, Texas. Fairview Microwave is RF on-demand.

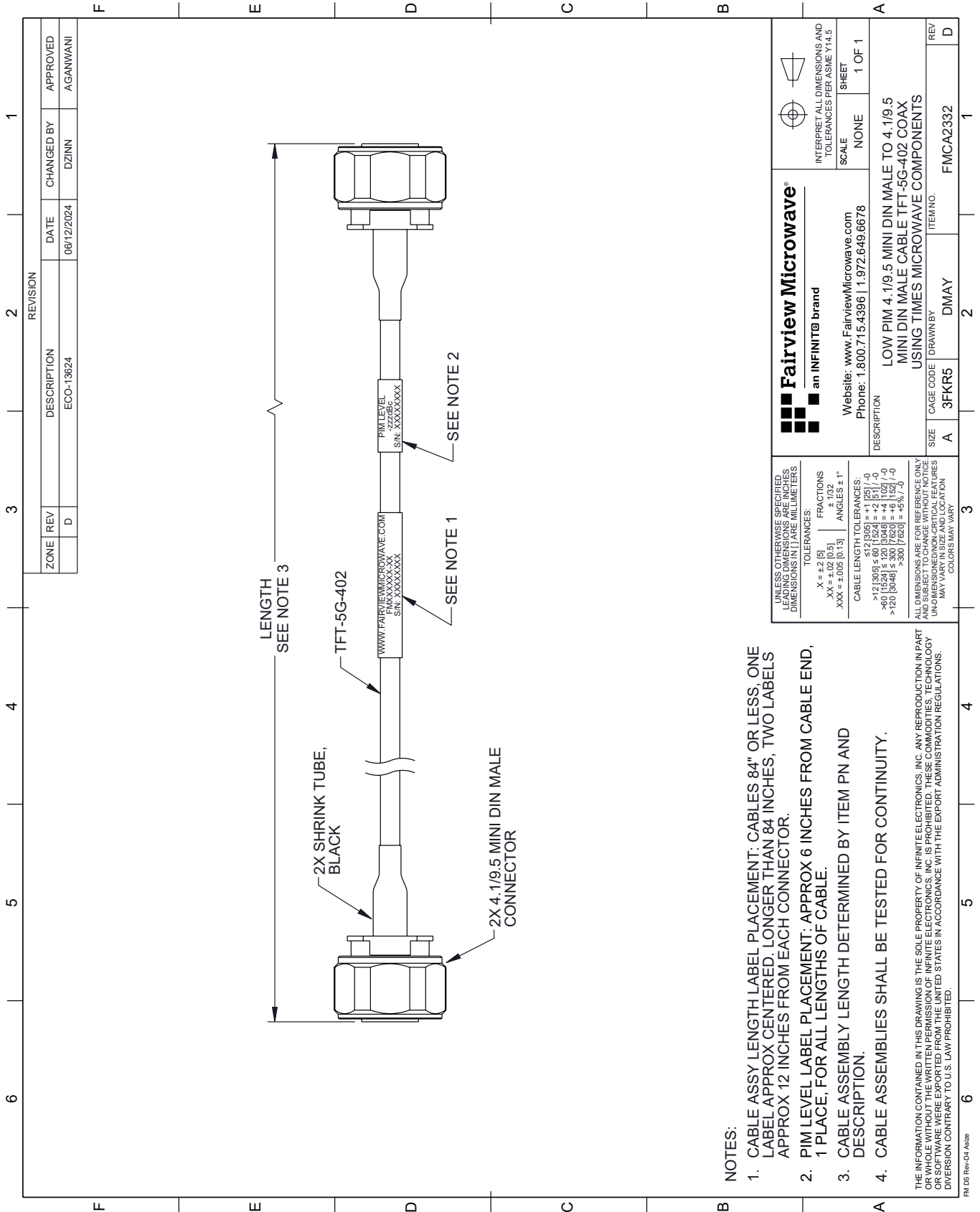
For additional information on this product, please click the following link: [Low PIM 4.1/9.5 Mini DIN Male to 4.1/9.5 Mini DIN Male Cable TFT-5G-402 Coax in 50 CM Using Times Microwave Components FMCA2332-50CM](#)

URL: <https://www.fairviewmicrowave.com/low-pim-4.1-9.5-mini-din-male-to-4.1-9.5-mini-din-male-cable-tft-5g-402-coax-in-50-cm-using-times-microwave-components-fmca2332-50cm-p.aspx>

The information contained within this document is accurate to the best of our knowledge and representative of the part described herein. It may be necessary to make modifications to the part and/or the documentation of the part in order to implement improvements. Fairview Microwave reserves the right to make such changes as required. Unless otherwise stated, all specifications are nominal. Fairview Microwave does not make any representation or warranty regarding the suitability of the part described herein for any particular purpose, and Fairview Microwave does not assume liability arising out of the use of any part or document.

FMCA2332-50CM CAD Drawing

Low PIM 4.1/9.5 Mini DIN Male to 4.1/9.5 Mini DIN Male Cable TFT-5G-402 Coax in 50 CM Using Times Microwave Components



NOTES:

- CABLE ASSY LENGTH LABEL PLACEMENT: CABLES 84" OR LESS, ONE LABEL APPROX CENTERED, LONGER THAN 84 INCHES, TWO LABELS APPROX 12 INCHES FROM EACH CONNECTOR.
- PIM LEVEL LABEL PLACEMENT: APPROX 6 INCHES FROM CABLE END, 1 PLACE, FOR ALL LENGTHS OF CABLE.
- CABLE ASSEMBLY LENGTH DETERMINED BY ITEM PN AND DESCRIPTION.
- CABLE ASSEMBLIES SHALL BE TESTED FOR CONTINUITY.

THE INFORMATION CONTAINED IN THIS DRAWING IS THE SOLE PROPERTY OF INFINITE ELECTRONICS, INC. ANY REPRODUCTION IN PART OR WHOLE WITHOUT THE WRITTEN PERMISSION OF INFINITE ELECTRONICS, INC. IS PROHIBITED. THESE COMMODITIES, TECHNOLOGY OR SOFTWARE WERE EXPORTED FROM THE UNITED STATES IN ACCORDANCE WITH THE EXPORT ADMINISTRATION REGULATIONS. DIVERSION CONTRARY TO U.S. LAW PROHIBITED.

FM DS Rev-D4 Alt2b

| REVISION | | DATE | CHANGED BY | APPROVED | |
|----------|-----|-------------|------------|----------|----------|
| ZONE | REV | DESCRIPTION | ECO-13624 | DZINN | AGANWANI |
| | D | | | | |

| | | | |
|--|-------|---|--|
| Fairview Microwave® an INFINIT® brand | | Website: www.FairviewMicrowave.com Phone: 1.800.715.4396 1.972.649.6678 | INTERPRET ALL DIMENSIONS AND TOLERANCES PER ASME Y14.5 SCALE: NONE SHEET: 1 OF 1 |
| DESCRIPTION: LOW PIM 4.1/9.5 MINI DIN MALE TO 4.1/9.5 MINI DIN MALE CABLE TFT-5G-402 COAX USING TIMES MICROWAVE COMPONENTS | | | |
| SIZE | A | CAGE CODE | DMAY |
| ITEM NO. | 3FKR5 | DRAWN BY | FMCA2332 |
| REV | D | | |

UNLESS OTHERWISE SPECIFIED, LEADING DIMENSIONS ARE IN INCHES, DIMENSIONS IN [] ARE MILLIMETERS.

TOLERANCES:
 .X = ±.2 [5]
 .XX = ±.02 [0.5]
 .XXX = ±.005 [0.13]
 FRACTIONS ± 1/32
 ANGLES ± 1°

CABLE LENGTH TOLERANCES:
 <12 [305] ≤ 60 [1524] = ±.1 [25] / -0
 >60 [1524] ≤ 120 [3048] = ±.1 [25] / -0
 >120 [3048] ≤ 300 [7620] = ±.2 [50] / -0
 >300 [7620] = ±.5 [12.7]

ALL DIMENSIONS ARE FOR REFERENCE ONLY. UNDIMENSIONED NON-CRITICAL FEATURES MAY VARY IN SIZE AND LOCATION. COLORS MAY VARY.