

## Outdoor Rated Low PIM 4.3-10 Male to 4.3-10 Male Cable SPO-500 Coax in 50 cm Using Times Microwave Parts and RoHS

### FMCA2074-50CM

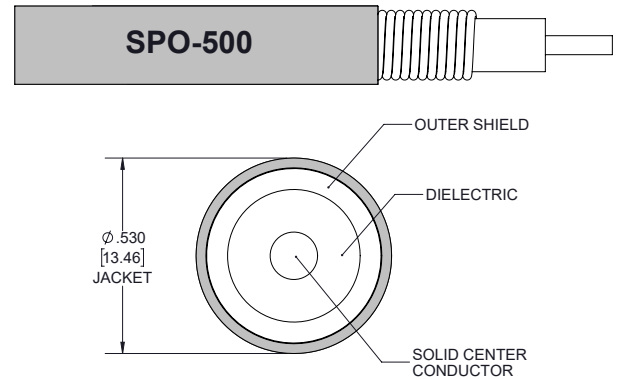


#### Configuration

- Connector 1: 4.3-10 Male TC-SPP500-4310M-LP
- Connector 2: 4.3-10 Male TC-SPP500-4310M-LP
- Cable Type: SPO-500
- Coax Flex Type: Corrugated

#### Features

- Max Frequency 6 GHz
- Low PIM: -158 dBc Max
- 83% Phase Velocity
- PE Jacket
- 100% Tested with PIM Test Results Marked on Cable
- Lightweight and Extremely Flexible
- Low Loss with Excellent VSWR
- IP67 (when mated)
- Using Times Microwave Components



#### Applications

- General Purpose
- Laboratory Use
- Low PIM Applications
- Distributed Antenna Systems (DAS)
- Multi-Carrier Communication Systems
- PIM Testing

#### Description

The 4.3-10 male to 4.3-10 male 50 cm cable using SPO-500 coax, part number FMCA2074-50CM, from Fairview Microwave is in-stock and ships same day. This Fairview 4.3-10 to 4.3-10 cable assembly has a male to male gender configuration with 50 ohm corrugated SPO-500 coax. Fairview Microwave's corrugated RF cable assemblies are ideal for applications where durability and high power are needed. Our low PIM design offers excellent passive intermodulation performance with PIM levels better than -158 dBc. The FMCA2074-50CM 4.3-10 male to 4.3-10 male cable assembly operates to 6 GHz. Times Microwave cable is used in each assembly and TMS components are used to form connections with the super flexible low PIM cable. These cable assemblies are expertly built to satisfy your specific need with high quality Times Microwave Systems manufactured parts.

Custom versions of most RF cable assemblies can be built and shipped same day. Custom cable assembly lengths can be obtained by specifying the desired length on the web site at time of order or by contacting a sales representative. Other RF cable assembly value added services including connector orientation or clocking, heat shrink booting and labeling are also available. RF testing can also be performed to document the electrical performance of your cable assembly.

#### Electrical Specifications

Description	Minimum	Typical	Maximum	Units
Frequency Range	DC		6	GHz
VSWR			1.4:1	
Velocity of Propagation		83		%
Passive Intermodulation			-158	dBc
IM3 (2x43dBm Tones) at 850 MHz or 1900 MHz				

Outdoor Rated Low PIM 4.3-10 Male to 4.3-10 Male Cable SPO-500 Coax in 50 cm Using Times Microwave Parts and RoHS

FMCA2074-50CM



Electrical Specifications

Description	Minimum	Typical	Maximum	Units
Capacitance		24 [78.74]		pF/ft [pF/m]

Specifications by Frequency

Description	F1	F2	F3	F4	F5	Units
Frequency	0.5	1	2	6		GHz
Insertion Loss (Max.)	0.18	0.26	0.37	0.65		dB

Electrical Specification Notes:  
PIM test results vary between cables  
The Insertion Loss data above is based on the performance specifications of the coax used in this assembly. The Insertion Loss includes an estimated insertion loss of 0.1\*SQRT(FGHz) dB per connector.

Mechanical Specifications

Cable Assembly

Width/Diameter1.14 in [28.96 mm]

Cable

Cable TypeSPO-500  
Impedance50 Ohms  
Inner Conductor TypeSolid  
Inner Conductor Material and PlatingCopper Clad Aluminum  
Dielectric TypeFoam PE  
Number of Shields1  
Shield Layer 1Helically Corrugated Copper Tube  
Outer Conductor 1 Material and PlatingCopper  
Jacket MaterialPE, Black  
Jacket Diameter0.53 in [13.46 mm]  
One Time Minimum Bend Radius2.25 in [57.15 mm]

Outdoor Rated Low PIM 4.3-10 Male to  
4.3-10 Male Cable SPO-500 Coax in 50 cm Using  
Times Microwave Parts and RoHS



## FMCA2074-50CM

### Connectors

Description	Connector 1	Connector 2
Type	4.3-10 Male	4.3-10 Male
Impedance	50 Ohms	50 Ohms
Configuration	Straight	Straight
Contact Material and Plating	Brass, Silver	Brass, Silver
Contact Plating Specification	200 µin	200 µin
Dielectric Type	PTFE	PTFE
Body Material and Plating	Brass, Tri-Metal	Brass, Tri-Metal
Body Plating Specification	80 µin	80 µin
Coupling Nut Material and Plating	Brass, Tri-Metal	Brass, Tri-Metal
Coupling Nut Plating Specification	80 µin	80 µin

### Environmental Specifications

Operating Range Temperature -40 to +85 deg C

**Compliance Certifications** (see [product page](#) for current document)

### Plotted and Other Data

Notes:  
Values at 25°C, sea level.

Outdoor Rated Low PIM 4.3-10 Male to  
4.3-10 Male Cable SPO-500 Coax in 50 cm Using  
Times Microwave Parts and RoHS

**FMCA2074-50CM**



#### Typical Performance Data



## Outdoor Rated Low PIM 4.3-10 Male to 4.3-10 Male Cable SPO-500 Coax in 50 cm Using Times Microwave Parts and RoHS

### FMCA2074-50CM



#### How to Order

Part Number Configuration:

**FMCA2074**

**- xx**

**uu**

Unit of Measure:  
cm = Centimeters  
<blank> = Inches  
Length  
Base Number

Example: FMCA2074-12 = 12 inches long cable  
FMCA2074-100cm = 100 cm long cable

Outdoor Rated Low PIM 4.3-10 Male to 4.3-10 Male Cable SPO-500 Coax in 50 cm Using Times Microwave Parts and RoHS from Fairview Microwave is in-stock and available to ship same-day. All of our RF/microwave products are available off-the-shelf from our ISO 9001:2008 certified facilities in Lewisville, Texas. Fairview Microwave is RF on-demand.

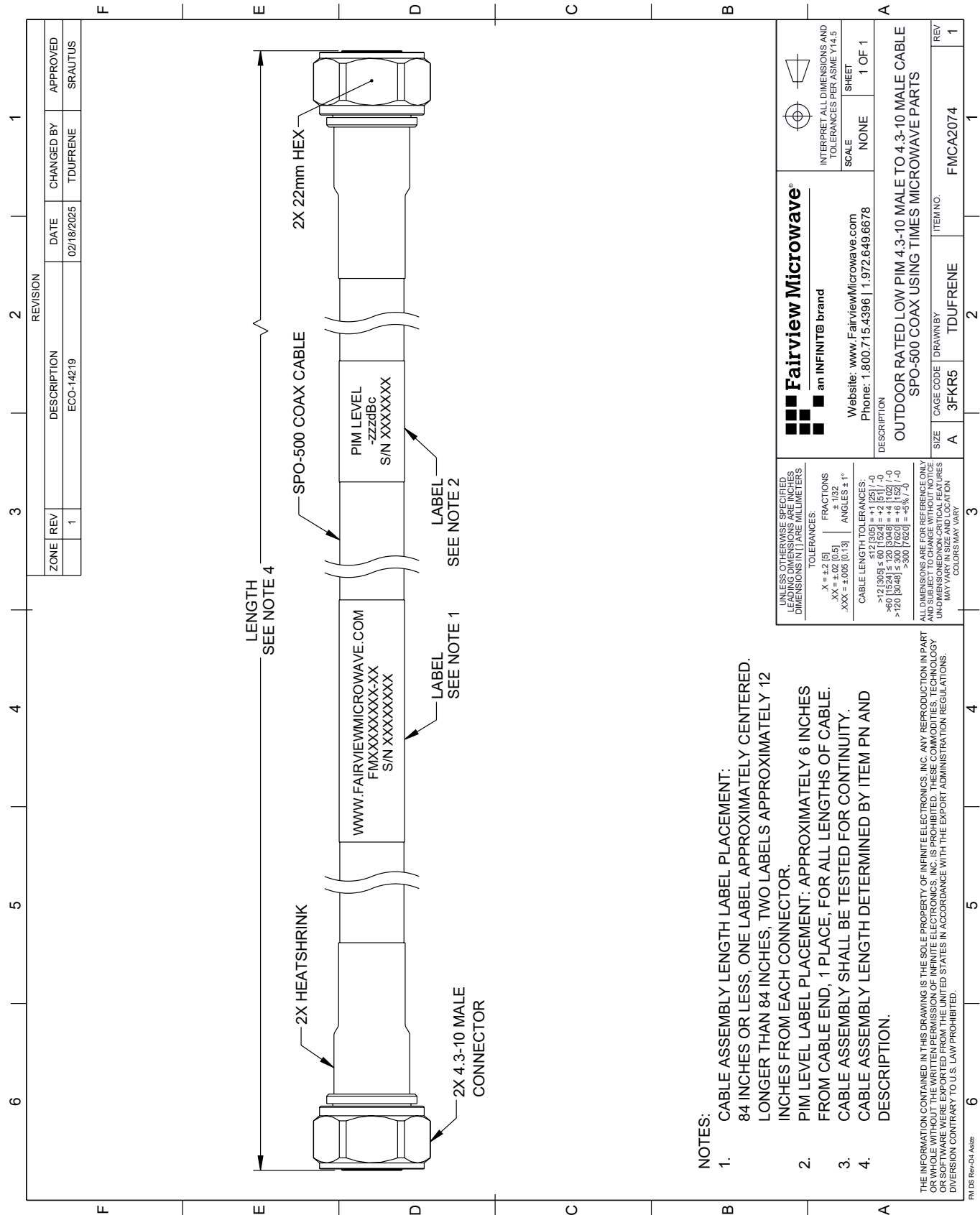
For additional information on this product, please click the following link: [Outdoor Rated Low PIM 4.3-10 Male to 4.3-10 Male Cable SPO-500 Coax in 50 cm Using Times Microwave Parts and RoHS FMCA2074-50CM](https://www.fairviewmicrowave.com/low-pim-4.3-10-male-4.3-10-male-cable-spo500-coax-fmca2074-50cm-p.aspx)

URL: <https://www.fairviewmicrowave.com/low-pim-4.3-10-male-4.3-10-male-cable-spo500-coax-fmca2074-50cm-p.aspx>

The information contained within this document is accurate to the best of our knowledge and representative of the part described herein. It may be necessary to make modifications to the part and/or the documentation of the part in order to implement improvements. Fairview Microwave reserves the right to make such changes as required. Unless otherwise stated, all specifications are nominal. Fairview Microwave does not make any representation or warranty regarding the suitability of the part described herein for any particular purpose, and Fairview Microwave does not assume liability arising out of the use of any part or document.

FMCA2074-50CM CAD Drawing

Outdoor Rated Low PIM 4.3-10 Male to 4.3-10 Male Cable SPO-500 Coax in 50 cm Using Times Microwave Parts and RoHS



- NOTES:
- CABLE ASSEMBLY LENGTH LABEL PLACEMENT: 84 INCHES OR LESS, ONE LABEL APPROXIMATELY CENTERED. LONGER THAN 84 INCHES, TWO LABELS APPROXIMATELY 12 INCHES FROM EACH CONNECTOR.
  - PIM LEVEL LABEL PLACEMENT: APPROXIMATELY 6 INCHES FROM CABLE END, 1 PLACE, FOR ALL LENGTHS OF CABLE.
  - CABLE ASSEMBLY SHALL BE TESTED FOR CONTINUITY.
  - CABLE ASSEMBLY LENGTH DETERMINED BY ITEM PN AND DESCRIPTION.

THE INFORMATION CONTAINED IN THIS DRAWING IS THE SOLE PROPERTY OF INFINITE ELECTRONICS, INC. ANY REPRODUCTION IN PART OR WHOLE WITHOUT THE WRITTEN PERMISSION OF INFINITE ELECTRONICS, INC. IS PROHIBITED. THESE COMMODITIES, TECHNOLOGY OR SOFTWARE WERE EXPORTED FROM THE UNITED STATES IN ACCORDANCE WITH THE EXPORT ADMINISTRATION REGULATIONS. DIVISION CONTRARY TO U.S. LAW PROHIBITED.

UNLESS OTHERWISE SPECIFIED, LEADING DIMENSIONS ARE IN INCHES, UNLESS INDICATED OTHERWISE. DIMENSIONS IN [ ] ARE MILLIMETERS.		Fairview Microwave® an INFINITI® brand		INTERPRET ALL DIMENSIONS AND TOLERANCES PER ASME Y14.5	
TOLERANCES:		Website: www.FairviewMicrowave.com Phone: 1.800.715.4396   1.972.649.6678		SCALE NONE	
X = ±.2 [5] .XX = ±.02 [0.5] .XXX = ±.005 [0.13]		FRACTIONS ± 1/32 ANGLES ± 1°		SHEET 1 OF 1	
CABLE LENGTH TOLERANCES:		DESCRIPTION OUTDOOR RATED LOW PIM 4.3-10 MALE TO 4.3-10 MALE CABLE SPO-500 COAX USING TIMES MICROWAVE PARTS			
>12 [305] ≤ 60 [1524] = ±.125 [-0 >60 [1524] ≤ 120 [3048] = ±.125 [-0 >120 [3048] ≤ 300 [7620] = ±.125 [-0 >300 [7620] = ±.125 [-0		ALL DIMENSIONS ARE FOR REFERENCE ONLY. UNLESS OTHERWISE SPECIFIED, DIMENSIONS ARE IN INCHES. UNLESS INDICATED OTHERWISE, DIMENSIONS IN [ ] ARE MILLIMETERS. COLORS MAY VARY.			
SIZE A		CAGE CODE 3FKR5		ITEM NO. FMCA2074	
DRAWN BY TDUFRENE		REV 1			