

## Plenum Low PIM 4.3-10 Male to N Male Cable SPP-375-LLPL Coax in 12 Inch Using Times Microwave Parts



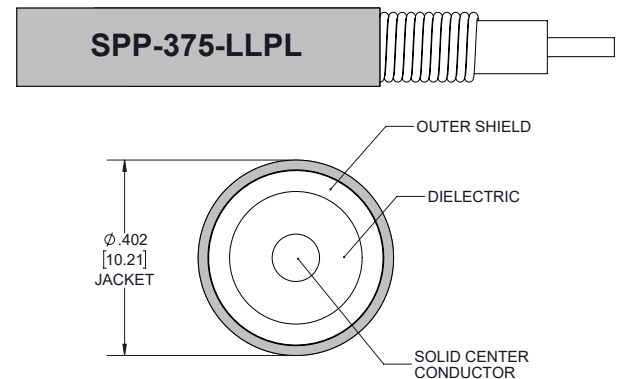
### FMCA2052-12

#### Configuration

- Connector 1: 4.3-10 Male TC-SPO375-4310M-LP
- Connector 2: N Male TC-375-NM-LP
- Cable Type: SPP-375-LLPL
- Coax Flex Type: Corrugated

#### Features

- Max Frequency 3 GHz
- Low PIM: -160 dBc Max
- Shielding Effectivity > 100 dB
- 76% Phase Velocity
- FEP Jacket
- 100% Tested with PIM Test Results Marked on Cable
- UL910 Plenum Rated Cable
- Lightweight and Extremely Flexible
- Low Loss with Excellent VSWR
- IP67 (when mated)
- Using Times Microwave Components



#### Applications

- General Purpose
- Laboratory Use
- Low PIM Applications
- Distributed Antenna Systems (DAS)
- Plenum Installations
- Multi-Carrier Communication Systems
- PIM Testing

#### Description

The 4.3-10 male to type N male 12 inch cable using SPP-375-LLPL coax, part number FMCA2052-12, from Fairview Microwave is in-stock and ships same day. This Fairview 4.3-10 to type N cable assembly has a male to male gender configuration with 50 ohm corrugated SPP-375-LLPL coax. Fairview Microwave's corrugated RF cable assemblies are ideal for applications where durability and high power are needed. Our low PIM design offers excellent passive intermodulation performance with PIM levels better than -160 dBc. The FMCA2052-12 4.3-10 male to type N male cable assembly operates to 3 GHz. Times Microwave cable is used in each assembly and TMS components are used to form connections with the super flexible low PIM cable. These cable assemblies are expertly built to satisfy your specific need with high quality Times Microwave Systems manufactured parts.

Custom versions of most RF cable assemblies can be built and shipped same day. Custom cable assembly lengths can be obtained by specifying the desired length on the web site at time of order or by contacting a sales representative. Other RF cable assembly value added services including connector orientation or clocking, heat shrink booting and labeling are also available. RF testing can also be performed to document the electrical performance of your cable assembly.

#### Electrical Specifications

| Description             | Minimum | Typical | Maximum | Units |
|-------------------------|---------|---------|---------|-------|
| Frequency Range         | DC      |         | 3       | GHz   |
| VSWR                    |         |         | 1.38:1  |       |
| Velocity of Propagation |         | 76      |         | %     |
| RF Shielding            | 100     |         |         | dB    |

Plenum Low PIM 4.3-10 Male to N Male Cable SPP-375-LLPL Coax in 12 Inch Using Times Microwave Parts



**FMCA2052-12**

**Electrical Specifications**

| Description   | Minimum | Typical      | Maximum | Units                 |
|---|---------|--------------|---------|-----------------------|
| Passive Intermodulation<br>IM3 (2x43dBm Tones) at 850 MHz or 1900 MHz |         | -165         | -160    | dBc                   |
| Capacitance   |         | 26.2 [85.96] |         | pF/ft [pF/m]          |
| Inductance  |         | 0.067 [0.22] |         | uH/ft [uH/m]          |
| DC Resistance Inner Conductor   |         | 1.3 [4.27]   |         | Ohms/1000ft [Ohms/Km] |

**Specifications by Frequency**

| Description           | F1   | F2   | F3   | F4   | F5   | Units |
|-----------------------|------|------|------|------|------|-------|
| Frequency             | 0.45 | 0.7  | 1    | 2    | 3    | GHz   |
| Insertion Loss (Max.) | 0.2  | 0.22 | 0.24 | 0.33 | 0.45 | dB    |

Electrical Specification Notes:

PIM test results vary between cables

The Insertion Loss data above is based on the performance specifications of the coax used in this assembly. The Insertion Loss includes an estimated insertion loss of 0.1\*SQRT(FGHz) dB for the 4.3-10 connector and 0.1 dB for the N connector.

**Mechanical Specifications**

**Cable Assembly**

|                |                      |
|----------------|----------------------|
| Length         | 12 in [304.8 mm]     |
| Width/Diameter | .96 in [24.38 mm]    |
| Weight         | 0.245 lbs [111.13 g] |

**Cable**

|  |                                  |
|--|----------------------------------|
| Cable Type                             | SPP-375-LLPL                     |
| Impedance                              | 50 Ohms                          |
| Inner Conductor Type                   | Solid                            |
| Inner Conductor Material and Plating   | Copper Clad Aluminum             |
| Dielectric Type                        | Microporous PTFE                 |
| Number of Shields                      | 1                                |
| Shield Layer 1                         | Helically Corrugated Copper Tube |
| Outer Conductor 1 Material and Plating | Copper                           |
| Jacket Material                        | FEP, Blue                        |
| Jacket Diameter                        | 0.402 in [10.21 mm]              |
| One Time Minimum Bend Radius           | 1.25 in [31.75 mm]               |
| Bending Moment                         | 1.7 lbs-ft [2.31 N-m]            |

Plenum Low PIM 4.3-10 Male to N Male Cable SPP-375-LLPL Coax in 12 Inch Using Times Microwave Parts



**FMCA2052-12**

**Connectors**

| Description                           | Connector 1       | Connector 2       |
|---------------------------------------|-------------------|-------------------|
| Type                                  | 4.3-10 Male       | N Male            |
| Impedance                             | 50 Ohms           | 50 Ohms           |
| Configuration                         | Straight          | Straight          |
| Contact Material and Plating          | Brass, Silver     | Brass, Silver     |
| Contact Plating Specification         | 200 µin           | 196 µin           |
| Dielectric Type                       | PTFE              | PTFE              |
| Outer Conductor Material and Plating  |                   | Brass, Tri-Metal  |
| Outer Conductor Plating Specification |                   | 118 µin           |
| Body Material and Plating             | Brass, Tri-Metal  |                   |
| Body Plating Specification            | 80 µin            |                   |
| Coupling Nut Material and Plating     | Brass, Nickel     | Brass, Tri-Metal  |
| Coupling Nut Plating Specification    | 200 µin           | 118 µin           |
| Torque                                | 44.25 in-lbs 5 Nm | 10 in-lbs 1.13 Nm |

**Environmental Specifications**

|                             |                   |
|-----------------------------|-------------------|
| Operating Range Temperature | -55 to +200 deg C |
| Storage Range Temperature   | -55 to +200 deg C |
| Plenum Rating               | UL910             |

**Compliance Certifications** (see [product page](#) for current document)

**Plotted and Other Data**

Notes:  
Values at 25°C, sea level.

Plenum Low PIM 4.3-10 Male to N Male Cable SPP-375-LLPL Coax in 12 Inch Using Times Microwave Parts



## FMCA2052-12

### Typical Performance Data

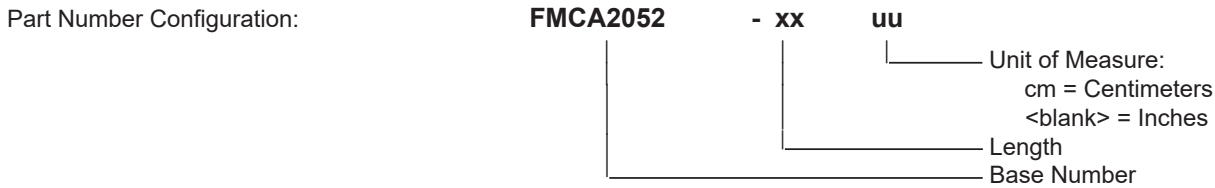


Plenum Low PIM 4.3-10 Male to N Male Cable SPP-375-LLPL Coax in 12 Inch Using Times Microwave Parts



**FMCA2052-12**

**How to Order**



Example: FMCA2052-12 = 12 inches long cable  
FMCA2052-100cm = 100 cm long cable

Plenum Low PIM 4.3-10 Male to N Male Cable SPP-375-LLPL Coax in 12 Inch Using Times Microwave Parts from Fairview Microwave is in-stock and available to ship same-day. All of our RF/microwave products are available off-the-shelf from our ISO 9001:2008 certified facilities in Lewisville, Texas. Fairview Microwave is RF on-demand.

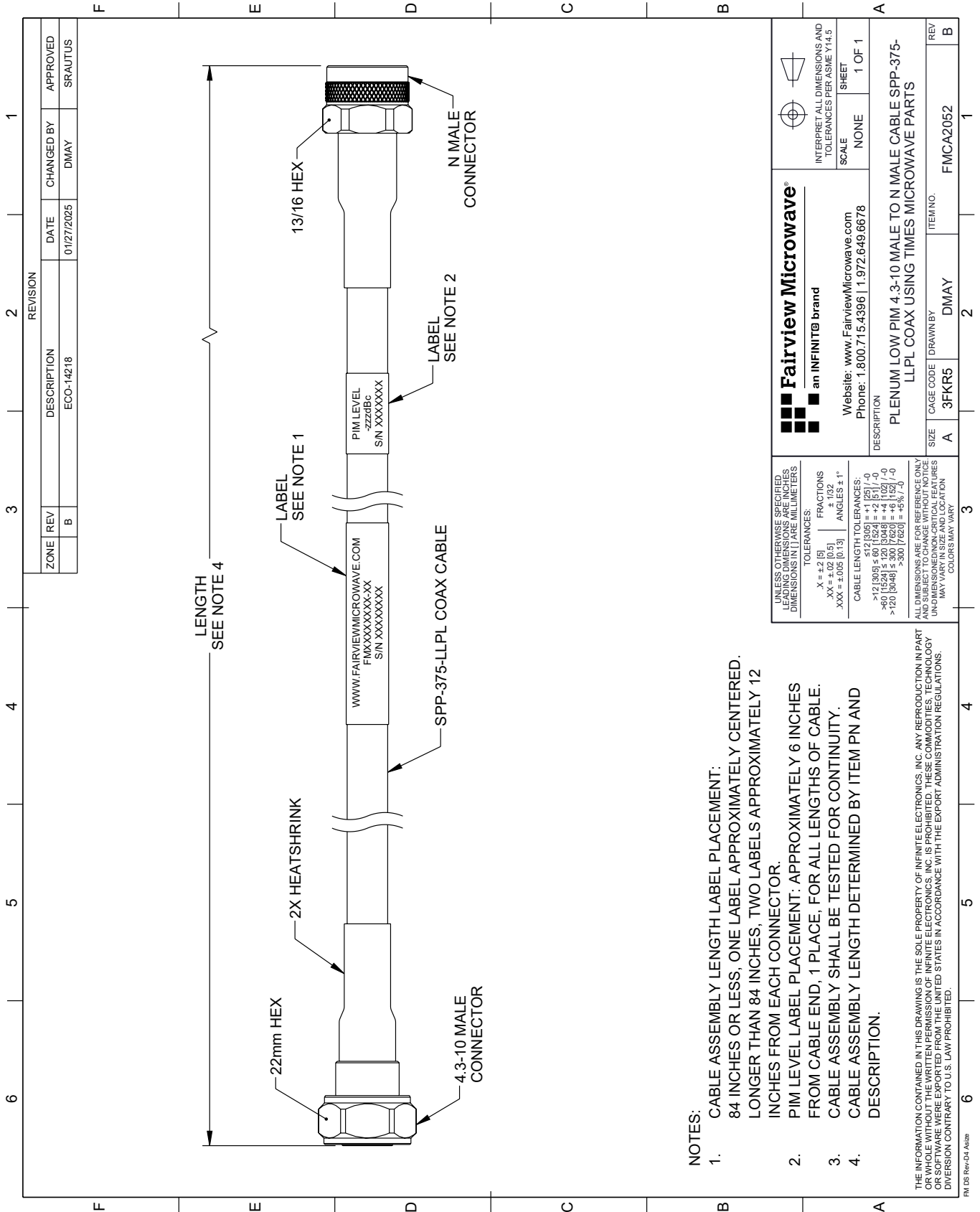
For additional information on this product, please click the following link: [Plenum Low PIM 4.3-10 Male to N Male Cable SPP-375-LLPL Coax in 12 Inch Using Times Microwave Parts FMCA2052-12](#)

URL: <https://www.fairviewmicrowave.com/low-pim-4.3-10-male-n-male-cable-spp375llpl-coax-fmca2052-12-p.aspx>

The information contained within this document is accurate to the best of our knowledge and representative of the part described herein. It may be necessary to make modifications to the part and/or the documentation of the part in order to implement improvements. Fairview Microwave reserves the right to make such changes as required. Unless otherwise stated, all specifications are nominal. Fairview Microwave does not make any representation or warranty regarding the suitability of the part described herein for any particular purpose, and Fairview Microwave does not assume liability arising out of the use of any part or document.

# FMCA2052-12 CAD Drawing

Plenum Low PIM 4.3-10 Male to N Male Cable SPP-375-LLPL Coax in 12 Inch Using Times Microwave Parts



**NOTES:**

1. CABLE ASSEMBLY LENGTH LABEL PLACEMENT: 84 INCHES OR LESS, ONE LABEL APPROXIMATELY CENTERED. LONGER THAN 84 INCHES, TWO LABELS APPROXIMATELY 12 INCHES FROM EACH CONNECTOR.
2. PIM LEVEL LABEL PLACEMENT: APPROXIMATELY 6 INCHES FROM CABLE END, 1 PLACE, FOR ALL LENGTHS OF CABLE.
3. CABLE ASSEMBLY SHALL BE TESTED FOR CONTINUITY.
4. CABLE ASSEMBLY LENGTH DETERMINED BY ITEM PN AND DESCRIPTION.

THE INFORMATION CONTAINED IN THIS DRAWING IS THE SOLE PROPERTY OF INFINITE ELECTRONICS, INC. ANY REPRODUCTION IN PART OR WHOLE WITHOUT THE WRITTEN PERMISSION OF INFINITE ELECTRONICS, INC. IS PROHIBITED. THESE COMMODITIES, TECHNOLOGY OR SOFTWARE WERE EXPORTED FROM THE UNITED STATES IN ACCORDANCE WITH THE EXPORT ADMINISTRATION REGULATIONS. DIVERSION CONTRARY TO U.S. LAW PROHIBITED.

FM DS Rev-D4 Alt2b