

## Plenum Low PIM 7/16 DIN Male to NEX10 Male Cable SPP-250-LLPL Coax in 150 cm Using Times Microwave Parts

### FMCA1921-150CM



#### Configuration

- Connector 1: 7/16 DIN Male TC-250-716M-LP
- Connector 2: NEX10 Male TC-250-NX10M-LP
- Cable Type: SPP-250-LLPL
- Coax Flex Type: Corrugated

#### Features

- Max Frequency 5.8 GHz
- Low PIM: -160 dBc Max
- Shielding Effectivity > 100 dB
- 76% Phase Velocity
- FEP Jacket
- 100% Tested with PIM Test Results Marked on Cable
- UL910 Plenum Rated Cable
- Lightweight and Extremely Flexible
- Low Loss with Excellent VSWR
- IP67 (when mated)
- Using Times Microwave Components



#### Applications

- General Purpose
- Laboratory Use
- Low PIM Applications
- Distributed Antenna Systems (DAS)
- Plenum Installations
- Multi-Carrier Communication Systems
- PIM Testing

#### Description

The 7/16 DIN male to NEX10 male 150 cm cable using SPP-250-LLPL coax, part number FMCA1921-150CM, from Fairview Microwave is in-stock and ships same day. This Fairview 7/16 DIN to NEX10 cable assembly has a male to male gender configuration with 50 ohm corrugated SPP-250-LLPL coax. Fairview Microwave's corrugated RF cable assemblies are ideal for applications where durability and high power are needed. Our low PIM design offers excellent passive intermodulation performance with PIM levels better than -160 dBc. The FMCA1921-150CM 7/16 DIN male to NEX10 male cable assembly operates to 5.8 GHz. Times Microwave cable is used in each assembly and TMS components are used to form connections with the super flexible low PIM cable. These cable assemblies are expertly built to satisfy your specific need with high quality Times Microwave Systems manufactured parts.

Custom versions of most RF cable assemblies can be built and shipped same day. Custom cable assembly lengths can be obtained by specifying the desired length on the web site at time of order or by contacting a sales representative. Other RF cable assembly value added services including connector orientation or clocking, heat shrink booting and labeling are also available. RF testing can also be performed to document the electrical performance of your cable assembly.

#### Electrical Specifications

Description	Minimum	Typical	Maximum	Units
Frequency Range	DC		5.8	GHz
VSWR			1.4:1	
Velocity of Propagation		76		%
RF Shielding	100			dB

## Plenum Low PIM 7/16 DIN Male to NEX10 Male Cable SPP-250-LLPL Coax in 150 cm Using Times Microwave Parts

### FMCA1921-150CM



#### Electrical Specifications

Description	Minimum	Typical	Maximum	Units
Passive Intermodulation		-165	-160	dBc
IM3 (2x43dBm Tones) at 850 MHz or 1900 MHz				
Capacitance		27 [88.58]		pF/ft [pF/m]
Inductance		0.067 [0.22]		uH/ft [uH/m]
DC Resistance Inner Conductor		3 [9.84]		Ohms/1000ft [Ohms/Km]

#### Specifications by Frequency

Description	F1	F2	F3	F4	F5	Units
Frequency	0.45	0.7	1	2.5	5.8	GHz
Insertion Loss (Max.)	0.33	0.42	0.49	0.79	1.23	dB

#### Electrical Specification Notes:

PIM test results vary between cables

The Insertion Loss data above is based on the performance specifications of the coax used in this assembly. The Insertion Loss includes an estimated insertion loss of  $0.1 \cdot \sqrt{F(\text{GHz})}$  dB per connector.

#### Mechanical Specifications

##### Cable Assembly

Length	59.0551 in [150 cm]
Width/Diameter	1.14 in [28.96 mm]

##### Cable

Cable Type	SPP-250-LLPL
Impedance	50 Ohms
Inner Conductor Type	Solid
Inner Conductor Material and Plating	Copper
Dielectric Type	PTFE
Number of Shields	1
Shield Layer 1	Helically Corrugated Copper Tube
Outer Conductor 1 Material and Plating	Copper
Outer Conductor Diameter	0.25 in [6.35 mm]
Jacket Material	FEP, Blue
Jacket Diameter	0.28 in [7.11 mm]
One Time Minimum Bend Radius	1.25 in [31.75 mm]
Bending Moment	0.8 lbs-ft [1.08 N-m]

## Plenum Low PIM 7/16 DIN Male to NEX10 Male Cable SPP-250-LLPL Coax in 150 cm Using Times Microwave Parts

### FMCA1921-150CM



#### Connectors

Description	Connector 1	Connector 2
Type	7/16 DIN Male	NEX10 Male
Impedance	50 Ohms	50 Ohms
Configuration	Straight	Straight
Mating Cycles		500
Contact Material and Plating	Brass, Silver	Brass, Silver
Contact Plating Specification	200µ in	100 µin
Dielectric Type	PTFE	PTFE
Body Material and Plating	Brass, Tri-Metal	Brass, Tri-Metal
Body Plating Specification	80 µin	100 µin
Coupling Nut Material and Plating	Brass, Nickel	Brass, Tri-Metal
Coupling Nut Plating Specification	80 µin	100 µin
Torque	22.127 ft-lbs 30 Nm	13.28 in-lbs 1.5 Nm

#### Environmental Specifications

Operating Range Temperature	-55 to +200 deg C
Storage Range Temperature	-55 to +200 deg C
Plenum Rating	UL910

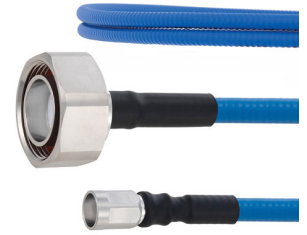
#### Compliance Certifications (see [product page](#) for current document)

#### Plotted and Other Data

Notes:  
Values at 25°C, sea level.

Plenum Low PIM 7/16 DIN Male to NEX10 Male Cable SPP-250-LLPL Coax in 150 cm Using Times Microwave Parts

**FMCA1921-150CM**



#### Typical Performance Data



## Plenum Low PIM 7/16 DIN Male to NEX10 Male Cable SPP-250-LLPL Coax in 150 cm Using Times Microwave Parts



### FMCA1921-150CM

#### How to Order

Part Number Configuration:

**FMCA1921**

**- xx**

**uu**

Unit of Measure:  
cm = Centimeters  
<blank> = Inches  
Length  
Base Number

Example: FMCA1921-12 = 12 inches long cable  
FMCA1921-100cm = 100 cm long cable

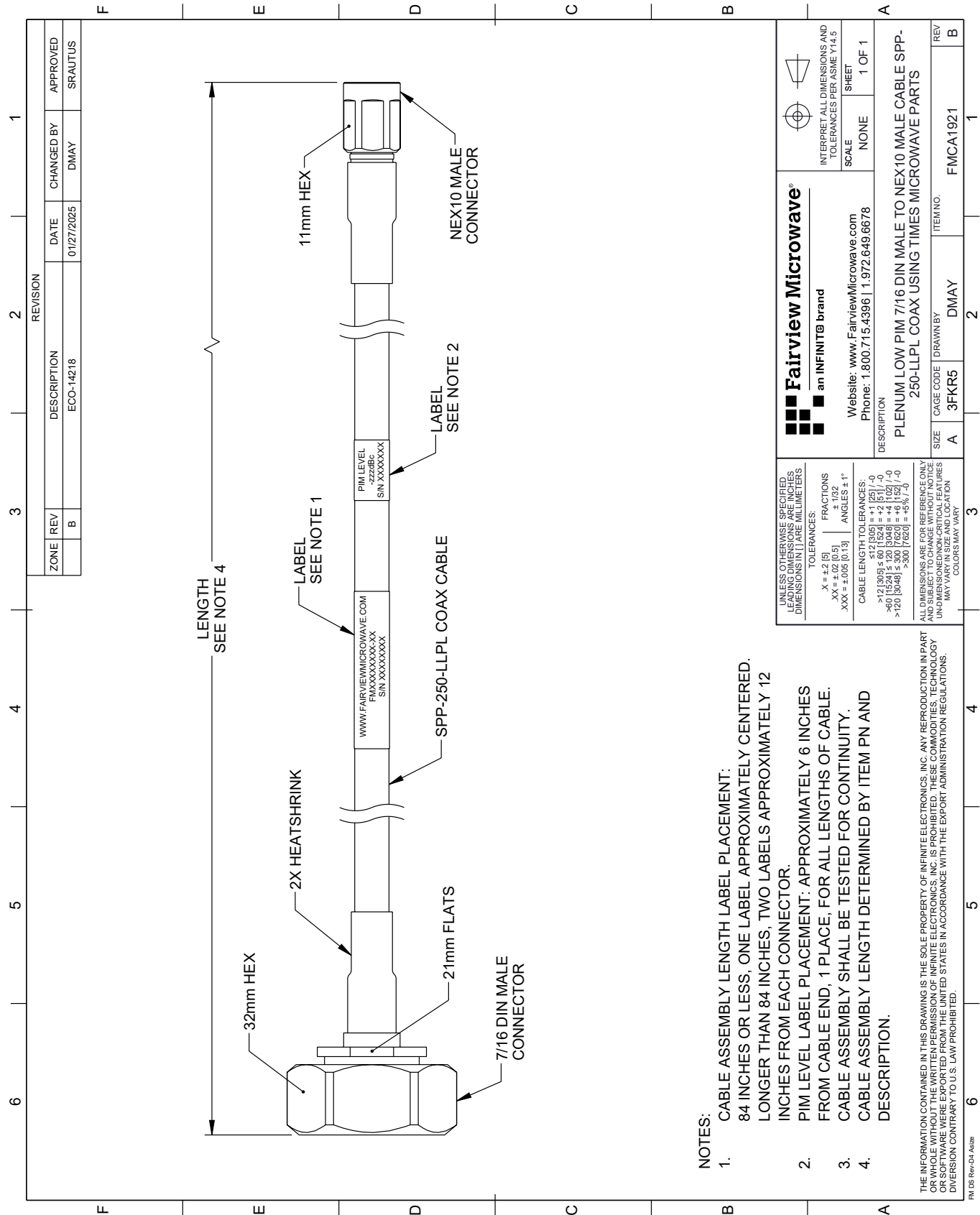
Plenum Low PIM 7/16 DIN Male to NEX10 Male Cable SPP-250-LLPL Coax in 150 cm Using Times Microwave Parts from Fairview Microwave is in-stock and available to ship same-day. All of our RF/microwave products are available off-the-shelf from our ISO 9001:2008 certified facilities in Lewisville, Texas. Fairview Microwave is RF on-demand.

For additional information on this product, please click the following link: [Plenum Low PIM 7/16 DIN Male to NEX10 Male Cable SPP-250-LLPL Coax in 150 cm Using Times Microwave Parts FMCA1921-150CM](https://www.fairviewmicrowave.com/low-pim-7-16-din-male-nex10-male-cable-spp250llpl-coax-fmca1921-150cm-p.aspx)

URL: <https://www.fairviewmicrowave.com/low-pim-7-16-din-male-nex10-male-cable-spp250llpl-coax-fmca1921-150cm-p.aspx>

The information contained within this document is accurate to the best of our knowledge and representative of the part described herein. It may be necessary to make modifications to the part and/or the documentation of the part in order to implement improvements. Fairview Microwave reserves the right to make such changes as required. Unless otherwise stated, all specifications are nominal. Fairview Microwave does not make any representation or warranty regarding the suitability of the part described herein for any particular purpose, and Fairview Microwave does not assume liability arising out of the use of any part or document.

FMCA1921-150CM CAD Drawing
Plenum Low PIM 7/16 DIN Male to NEX10 Male Cable SPP-250-LLPL Coax in 150 cm Using Times Microwave Parts



- NOTES:
- 1. CABLE ASSEMBLY LENGTH LABEL PLACEMENT: 84 INCHES OR LESS, ONE LABEL APPROXIMATELY CENTERED. LONGER THAN 84 INCHES, TWO LABELS APPROXIMATELY 12 INCHES FROM EACH CONNECTOR.
  - 2. PIM LEVEL LABEL PLACEMENT: APPROXIMATELY 6 INCHES FROM CABLE END, 1 PLACE, FOR ALL LENGTHS OF CABLE.
  - 3. CABLE ASSEMBLY SHALL BE TESTED FOR CONTINUITY.
  - 4. CABLE ASSEMBLY LENGTH DETERMINED BY ITEM PN AND DESCRIPTION.

THE INFORMATION CONTAINED IN THIS DRAWING IS THE SOLE PROPERTY OF INFINITE ELECTRONICS, INC. ANY REPRODUCTION IN PART OR WHOLE WITHOUT THE WRITTEN PERMISSION OF INFINITE ELECTRONICS, INC. IS PROHIBITED. THESE COMMODITIES, TECHNOLOGY OR SOFTWARE WERE EXPORTED FROM THE UNITED STATES IN ACCORDANCE WITH THE EXPORT ADMINISTRATION REGULATIONS. DIVISION CONTRARY TO U.S. LAW PROHIBITED.

UNLESS OTHERWISE SPECIFIED, LEADING DIMENSIONS ARE IN INCHES. DIMENSIONS IN [ ] ARE IN MILLIMETERS.		Fairview Microwave® an INFINITI® brand		INTERPRET ALL DIMENSIONS AND TOLERANCES PER ASME Y14.5	
TOLERANCES:		Website: www.FairviewMicrowave.com Phone: 1.800.715.4396   1.972.649.6678		SCALE NONE	
X = ±.2 [5] .XX = ±.02 [0.5] .XXX = ±.005 [0.13]		FRACTIONS ± 1/32 ANGLES ± 1°		SHEET 1 OF 1	
CABLE LENGTH TOLERANCES:		DESCRIPTION PLENUM LOW PIM 7/16 DIN MALE TO NEX10 MALE CABLE SPP-250-LLPL COAX USING TIMES MICROWAVE PARTS		REV	
>12 [305] ≤ 60 [1524] = ±.125 [-.0]		SIZE A		CAGE CODE 3FKR5	
>60 [1524] ≤ 120 [3048] = ±.125 [-.0]		DRAWN BY DMAY		ITEM NO. FMCA1921	
>120 [3048] ≤ 300 [7620] = ±.5% [-.0]		MAY VARY IN SIZE AND LOCATION COLORS MAY VARY		1	