

## Slide-On BMA Plug Bulkhead to SMA Male Cable FM-SR141TBJ Coax in 12 Inch

The BMA plug slide-on bulkhead to SMA male 12 inch cable using FM-SR141TBJ coax, part number FMCA1619-12, from Fairview Microwave is in-stock and ships same day. This Fairview BMA to SMA cable assembly has a plug to male gender configuration with 50 ohm formable FM-SR141TBJ coax. Fairview Microwave's formable RF cable assemblies provide an alternative to costly pre-formed semi-rigid assemblies since they are hand formable. The FMCA1619-12 BMA plug to SMA male cable assembly operates to 18 GHz. Our RF cable assembly with BMA bulkhead interface allows designers to create external connections on their product enclosures, and can be used in a variety of other rack mount and panel mount applications.

Custom versions of most RF cable assemblies can be built and shipped same day. Custom cable assembly lengths can be obtained by specifying the desired length on the web site at time of order or by contacting a sales representative. Other RF cable assembly value added services including connector orientation or clocking, heat shrink booting and labeling are also available. RF testing can also be performed to document the electrical performance of your cable assembly.

### Electrical Specifications

| Description             | Min | Typ         | Max   | Units        |
|-------------------------|-----|-------------|-------|--------------|
| Frequency Range         | DC  |             | 18    | GHz          |
| VSWR                    |     |             | 1.5:1 |              |
| Return Loss             |     |             | 15.56 | dB           |
| Velocity of Propagation |     | 70          |       | %            |
| RF Shielding            | 100 |             |       | dB           |
| Group Delay             |     | 1.43 [4.69] |       | ns/ft [ns/m] |
| Capacitance             |     | 29 [95.14]  |       | pF/ft [pF/m] |

### Performance by Frequency

| Description           | F1   | F2   | F3   | F4   | F5   | Units |
|-----------------------|------|------|------|------|------|-------|
| Frequency             | 1    | 2    | 4.5  | 9    | 18   | GHz   |
| Insertion Loss (Typ.) | 0.32 | 0.36 | 0.46 | 0.59 | 0.78 | dB    |

### Mechanical Specifications

#### Cable Assembly

|          |                  |
|----------|------------------|
| Length*  | 12 in [304.8 mm] |
| Diameter | 0.315 in [8 mm]  |

#### Cable

|                                      |                           |
|--------------------------------------|---------------------------|
| Cable Type                           | FM-SR141TBJ               |
| Impedance                            | 50 Ohms                   |
| Inner Conductor Type                 | Solid                     |
| Inner Conductor Material and Plating | Copper Clad Steel, Silver |
| Dielectric Type                      | PTFE                      |
| Number of Shields                    | 1                         |
| Shield Layer 1                       | Tinned Copper Braid       |
| Jacket Material                      | FEP, Black                |



### Configuration:

- Slide-On BMA Plug Bulkhead
- SMA Male
- FM-SR141TBJ

### Features:

- Max Frequency 18 GHz
- Shielding Effectivity > 100 dB
- 70% Phase Velocity
- FEP Jacket

### Applications:

- General Purpose
- Laboratory Use
- Rack and Panel
- BMA Cable RF Backplanes
- Phased Array Interconnects
- High Speed Switching Networks
- Blind Mate BMA Test

Fairview Microwave  
301 Leora Ln., Suite 100  
Lewisville, TX 75056  
Tel: 1-800-715-4396 / (972) 649-6678  
Fax: (972) 649-6689  
[www.fairviewmicrowave.com](http://www.fairviewmicrowave.com)  
[sales@fairviewmicrowave.com](mailto:sales@fairviewmicrowave.com)

Jacket Diameter 0.161 in [4.09 mm]

One Time Minimum Bend Radius 0.315 in [8 mm]

Repeated Minimum Bend Radius 1.575 in [40.01 mm]

### Connectors

| Description                     | Connector 1        | Connector 2                |
|---------------------------------|--------------------|----------------------------|
| Type                            | BMA Plug           | SMA Male                   |
| Mount Method                    | Bulkhead           |                            |
| Impedance                       | 50 Ohms            | 50 Ohms                    |
| Connection Method               | Slide-On           |                            |
| Contact Material & Plating      | Bronze, Gold       |                            |
| Contact Plating Spec.           | 51.18µ in. minimum |                            |
| Dielectric Type                 | PTFE               |                            |
| Outer Cond Material & Plating   | Brass, Tri-Metal   |                            |
| Outer Cond Plating Spec.        | 78.74µ in. minimum |                            |
| Body Material & Plating         | Brass, Tri-Metal   | Brass, Gold over Nickel    |
| Body Plating Spec.              | 78.74µ in. minimum |                            |
| Coupling Nut Material & Plating |                    | Passivated Stainless Steel |
| Hex Size                        | 8 mm               | 5/16 inch                  |
| Torque                          |                    | 8 in-lbs [0.9 Nm]          |

### Mechanical Specification Notes:

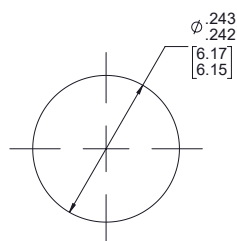
\*All cable assemblies have a length tolerance of 1.5% or  $\pm 3/8"$ , whichever is greater.

### Compliance Certifications (see [product page](#) for current document)

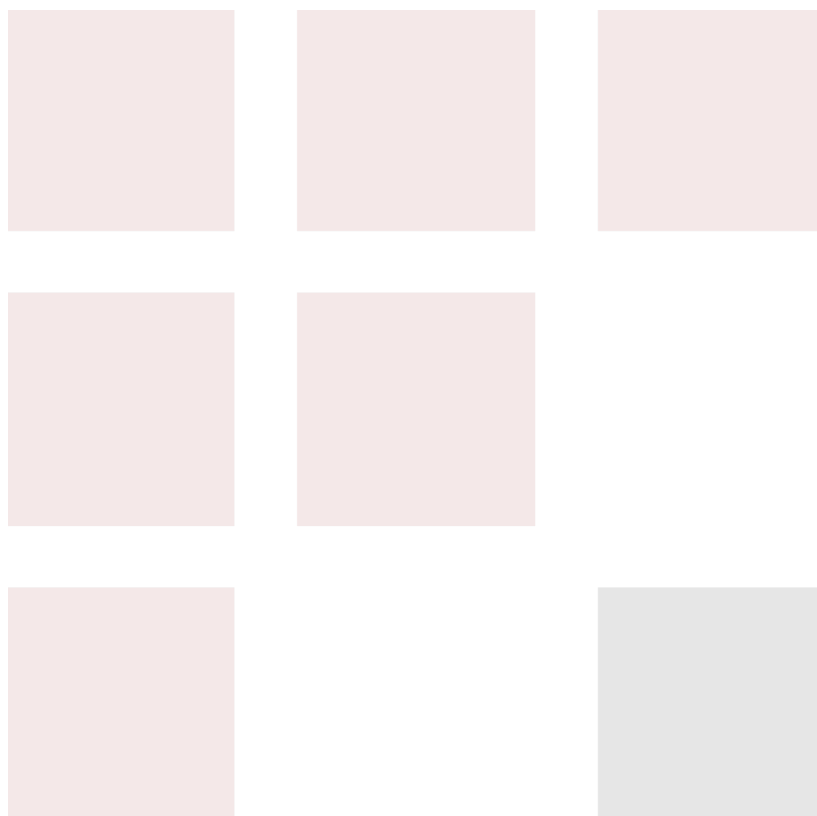
### Plotted and Other Data

Notes:

## Typical Performance Data



MOUNTING HOLE



## How to Order

Part Number Configuration:

**FMCA1619 - xx uu**

cm = Centimeters  
 <blank> = Inches  
 Length

Example: FMCA1619-12 = 12 inches long cable  
 FMCA1619-100cm = 100 cm long cable

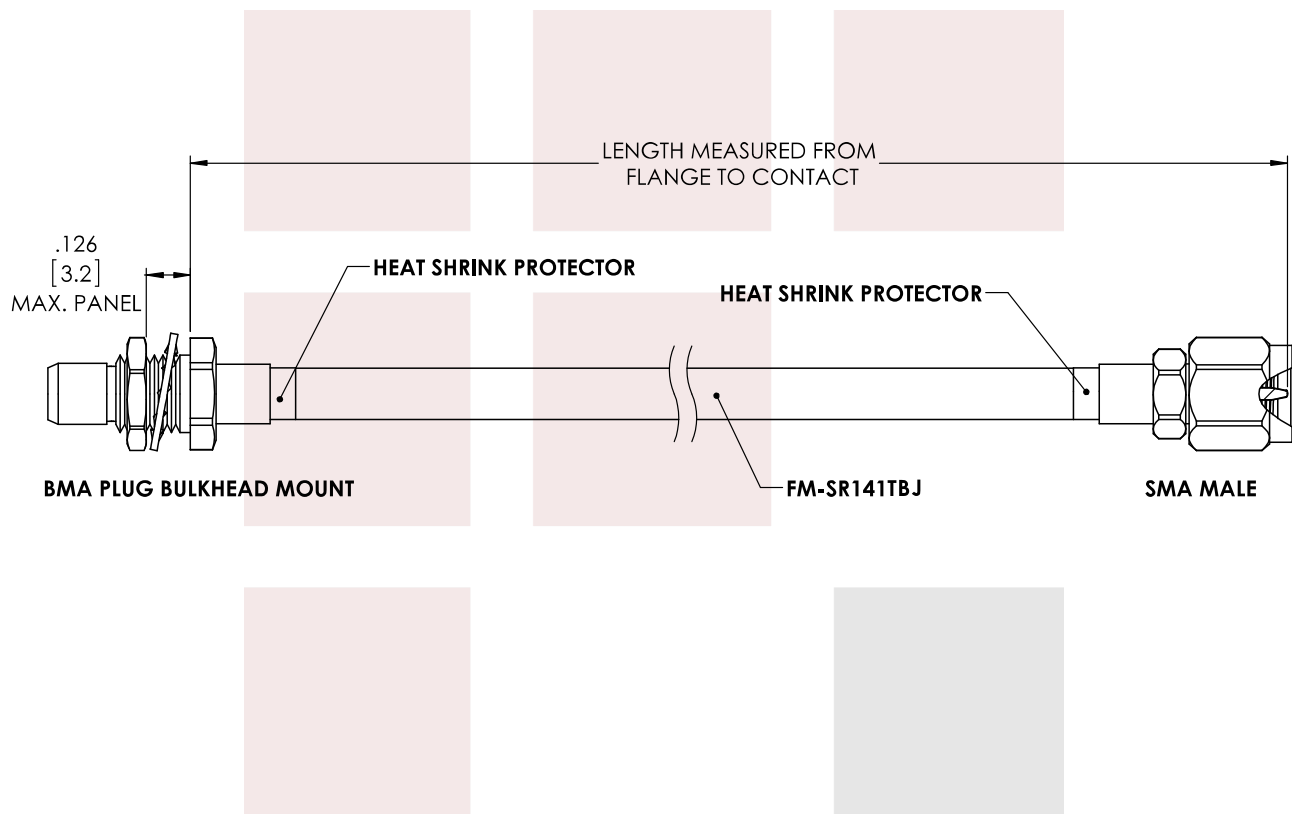
Slide-On BMA Plug Bulkhead to SMA Male Cable FM-SR141TBJ Coax in 12 Inch from Fairview Microwave has same day shipment for domestic and International orders. Our RF, microwave and fiber optic products maintain a 99% availability and are part of the broadest selection in the industry.

Click the following link to obtain additional part information: [Slide-On BMA Plug Bulkhead to SMA Male Cable FM-SR141TBJ Coax in 12 Inch FMCA1619-12](#)

URL: <https://www.fairviewmicrowave.com/bma-plug-sma-male-cable-fm-sr141tbj-coax-fmca1619-12-p.aspx>

The information contained in this document is accurate to the best of our knowledge and representative of the part described herein. It may be necessary to make modifications to the part and/or the documentation of the part, in order to implement improvements. Fairview Microwave reserves the right to make such changes as required. Unless otherwise stated, all specifications are nominal. Fairview Microwave does not make any representation or warranty regarding the suitability of the part described herein for any particular purpose, and Fairview Microwave does not assume any liability arising out of the use of any part or documentation.





**STANDARD TOLERANCES**

.X ±0.2  
.XX ±0.01  
.XXX ±0.005

\*STANDARD TOLERANCES APPLY  
ONLY TO DIMENSIONS IN INCHES

**FAIRVIEW MICROWAVE INC.**

ALLEN, TX 75013 WWW.FAIRVIEWMICROWAVE.COM

**NOTES:**

1. UNLESS OTHERWISE SPECIFIED ALL DIMENSIONS ARE NOMINAL.
2. ALL SPECIFICATIONS ARE SUBJECT TO CHANGE WITHOUT NOTICE AT ANY TIME.
3. DIMENSIONS ARE IN INCHES [mm].

**TITLE**

Slide-On BMA Plug Bulkhead to SMA Male Cable FM-SR141TBJ Coax in 12 Inch

**DWG NO**

FMCA1619

**CAGE CODE**

3FKR5

CAD FILE 12/22/17

SHEET

SCALE N/A

SIZE A

CN2245