

## Slide-On BMA Plug Bulkhead to RA SMA Male Cable FM-SR086TBJ Coax in 60 Inch

The BMA plug slide-on bulkhead to RA SMA male 60 inch cable using FM-SR086TBJ coax, part number FMCA1570-60, from Fairview Microwave is in-stock and ships same day. This Fairview BMA to SMA cable assembly has a plug to male gender configuration with 50 ohm formable FM-SR086TBJ coax. Fairview Microwave's formable RF cable assemblies provide an alternative to costly pre-formed semi-rigid assemblies since they are hand formable. The FMCA1570-60 BMA plug to SMA male cable assembly operates to 10 GHz. The right angle SMA interface on the FM-SR086TBJ cable allows for easier connections in tight spaces. Our RF cable assembly with BMA bulkhead interface allows designers to create external connections on their product enclosures, and can be used in a variety of other rack mount and panel mount applications.

Custom versions of most RF cable assemblies can be built and shipped same day. Custom cable assembly lengths can be obtained by specifying the desired length on the web site at time of order or by contacting a sales representative. Other RF cable assembly value added services including connector orientation or clocking, heat shrink booting and labeling are also available. RF testing can also be performed to document the electrical performance of your cable assembly.

### Electrical Specifications

Description	Min	Typ	Max	Units
Frequency Range	DC		10	GHz
VSWR			1.5:1	
Return Loss			15.56	dB
Velocity of Propagation		69.5		%
RF Shielding	100			dB
Group Delay		1.43 [4.69]		ns/ft [ns/m]
Capacitance		29 [95.14]		pF/ft [pF/m]
DC Resistance Inner Conductor		65.7 [215.55]		$\Omega$ /1000ft [ $\Omega$ /Km]
DC Resistance Outer Conductor		10.2 [33.46]		$\Omega$ /1000ft [ $\Omega$ /Km]

### Performance by Frequency

Description	F1	F2	F3	F4	F5	Units
Frequency	0.5	1	2.5	5	10	GHz
Insertion Loss (Typ.)	0.95	1.3	2.05	2.95	4.25	dB

### Mechanical Specifications

#### Cable Assembly

Length*	60 in [152.4 cm]
Diameter	0.315 in [8 mm]

#### Cable

Cable Type	FM-SR086TBJ
Impedance	50 Ohms
Inner Conductor Type	Solid
Inner Conductor Material and Plating	Copper Clad Steel, Silver
Dielectric Type	PTFE



### Configuration:

- Slide-On BMA Plug Bulkhead
- SMA Male Right Angle
- FM-SR086TBJ

### Features:

- Max Frequency 10 GHz
- Shielding Effectivity > 100 dB
- 69.5% Phase Velocity
- FEP Jacket

### Applications:

- General Purpose
- Laboratory Use
- Rack and Panel
- BMA Cable RF Backplanes
- Phased Array Interconnects
- High Speed Switching Networks
- Blind Mate BMA Test

Fairview Microwave  
301 Leora Ln., Suite 100  
Lewisville, TX 75056  
Tel: 1-800-715-4396 / (972) 649-6678  
Fax: (972) 649-6689  
[www.fairviewmicrowave.com](http://www.fairviewmicrowave.com)  
[sales@fairviewmicrowave.com](mailto:sales@fairviewmicrowave.com)

Number of Shields	1
Outer Conductor Material and Plating	Tinned Copper Composite Braid
Jacket Material	FEP, Black
Jacket Diameter	0.105 in [2.67 mm]
One Time Minimum Bend Radius	0.5 in [12.7 mm]
Repeated Minimum Bend Radius	0.787 in [19.99 mm]

## Connectors

Description	Connector 1	Connector 2
Type	BMA Plug	SMA Male
Mount Method	Bulkhead	
Impedance	50 Ohms	50 Ohms
Connection Method	Slide-On	
Contact Material & Plating	Bronze, Gold	Brass, Gold over Nickel
Contact Plating Spec.	51.18µ in. minimum	0.2 µin minimum
Dielectric Type	PTFE	PTFE
Outer Cond Material & Plating	Brass, Tri-Metal	
Outer Cond Plating Spec.	78.74µ in. minimum	
Body Material & Plating	Brass, Tri-Metal	Brass, Gold over Nickel
Body Plating Spec.	78.74µ in. minimum	0.1 µin minimum
Coupling Nut Material & Plating		Passivated Stainless Steel
Hex Size	8 mm	5/16 inch
Torque		8 in-lbs [0.9 Nm]

## Mechanical Specification Notes:

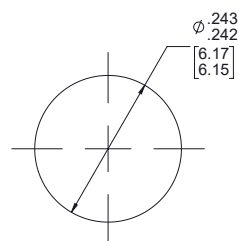
\*All cable assemblies have a length tolerance of 1.5% or  $\pm 3/8"$ , whichever is greater.

## Compliance Certifications (see [product page](#) for current document)

## Plotted and Other Data

Notes:

## Typical Performance Data



MOUNTING HOLE



## How to Order

Part Number Configuration:

**FMCA1570 - xx uu**

\_\_\_\_\_ cm = Centimeters  
 \_\_\_\_\_ <blank> = Inches  
 \_\_\_\_\_ Length

Example: FMCA1570-12 = 12 inches long cable  
 FMCA1570-100cm = 100 cm long cable

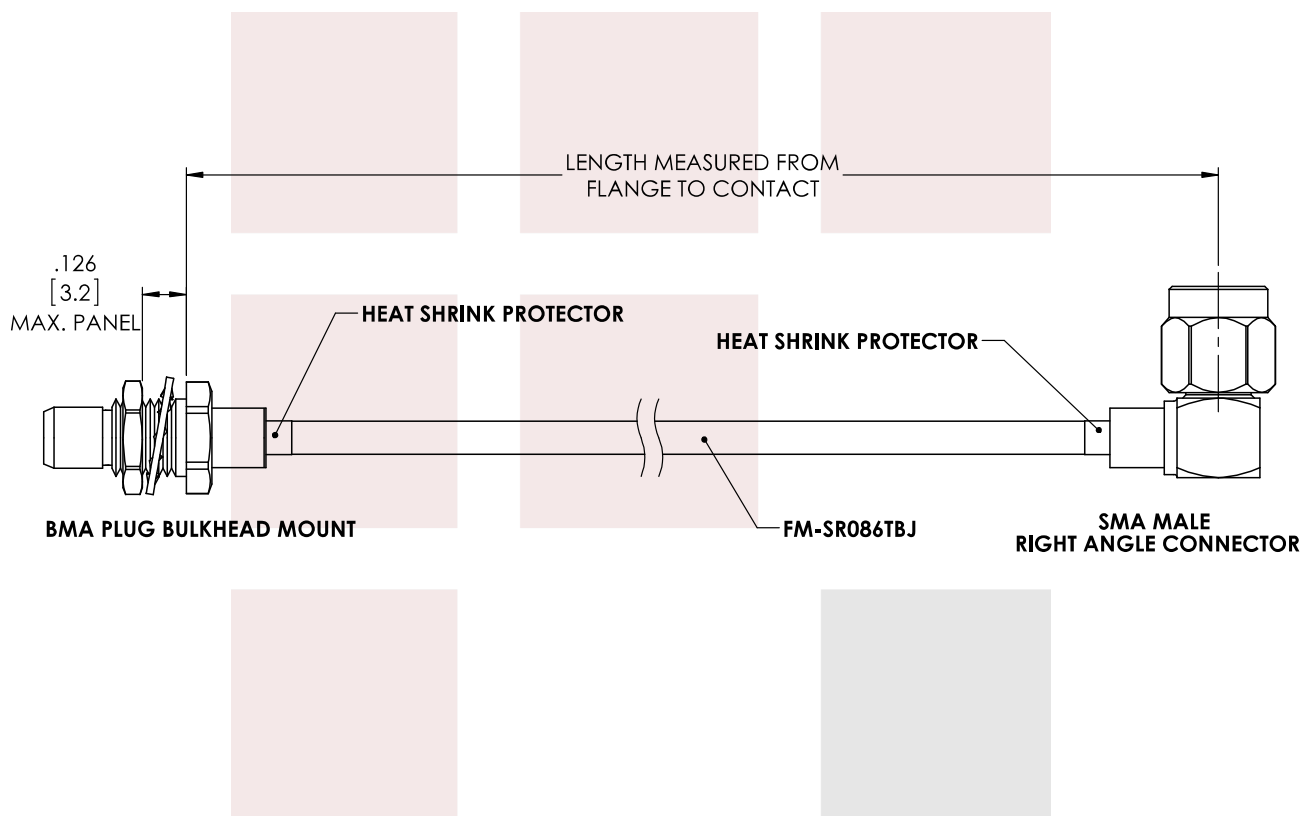
Slide-On BMA Plug Bulkhead to RA SMA Male Cable FM-SR086TBJ Coax in 60 Inch from Fairview Microwave has same day shipment for domestic and International orders. Our RF, microwave and fiber optic products maintain a 99% availability and are part of the broadest selection in the industry.

Click the following link to obtain additional part information: [Slide-On BMA Plug Bulkhead to RA SMA Male Cable FM-SR086TBJ Coax in 60 Inch FMCA1570-60](#)

URL: <https://www.fairviewmicrowave.com/bma-plug-ra-sma-male-cable-rg405-type-.086-coax-fmca1570-60-p.aspx>

The information contained in this document is accurate to the best of our knowledge and representative of the part described herein. It may be necessary to make modifications to the part and/or the documentation of the part, in order to implement improvements. Fairview Microwave reserves the right to make such changes as required. Unless otherwise stated, all specifications are nominal. Fairview Microwave does not make any representation or warranty regarding the suitability of the part described herein for any particular purpose, and Fairview Microwave does not assume any liability arising out of the use of any part or documentation.





**STANDARD TOLERANCES**

.X ±0.2  
.XX ±0.01  
.XXX ±0.005

\*STANDARD TOLERANCES APPLY  
ONLY TO DIMENSIONS IN INCHES

**FAIRVIEW MICROWAVE INC.**

ALLEN, TX 75013 WWW.FAIRVIEWMICROWAVE.COM

**NOTES:**

1. UNLESS OTHERWISE SPECIFIED ALL DIMENSIONS ARE NOMINAL.
2. ALL SPECIFICATIONS ARE SUBJECT TO CHANGE WITHOUT NOTICE AT ANY TIME.
3. DIMENSIONS ARE IN INCHES [mm].

**TITLE**

Slide-On BMA Plug Bulkhead to RA SMA Male Cable  
FM-SR086TBJ Coax in 60 Inch

**DWG NO**

FMCA1570

**CAGE CODE**

3FKR5

CAD FILE 12/11/17

SHEET

SCALE N/A

SIZE A

CN2245