

## Slide-On BMA Plug Bulkhead to Slide-On BMA Plug Bulkhead Cable FM-SR086TBJ Coax

### FMCA1558



#### Configuration

- Connector 1: Slide-On BMA Plug Bulkhead
- Connector 2: Slide-On BMA Plug Bulkhead
- Cable Type: FM-SR086TBJ
- Coax Flex Type: Formable

#### Features

- Max Frequency 20 GHz
- Shielding Effectivity > 100 dB
- 69.5% Phase Velocity
- FEP Jacket

#### Applications

- General Purpose
- Laboratory Use
- Rack and Panel
- BMA Cable RF Backplanes
- Phased Array Interconnects
- High Speed Switching Networks
- Blind Mate BMA Test

#### Description

The BMA plug slide-on bulkhead to BMA plug slide-on bulkhead cable using FM-SR086TBJ coax, part number FMCA1558, from Fairview Microwave is in-stock and ships same day. This Fairview BMA to BMA cable assembly has a plug to plug gender configuration with 50 ohm formable FM-SR086TBJ coax. Fairview Microwave's formable RF cable assemblies provide an alternative to costly pre-formed semi-rigid assemblies since they are hand formable. The FMCA1558 BMA plug to BMA plug cable assembly operates to 20 GHz. Our RF cable assembly with BMA bulkhead interface allows designers to create external connections on their product enclosures, and can be used in a variety of other rack mount and panel mount applications.

Custom versions of most RF cable assemblies can be built and shipped same day. Custom cable assembly lengths can be obtained by specifying the desired length on the web site at time of order or by contacting a sales representative. Other RF cable assembly value added services including connector orientation or clocking, heat shrink booting and labeling are also available. RF testing can also be performed to document the electrical performance of your cable assembly.

#### Electrical Specifications

Description	Minimum	Typical	Maximum	Units
Frequency Range	DC		20	GHz
VSWR			1.5:1	
Return Loss			15.56	dB
Velocity of Propagation		69.5		%
RF Shielding	100			dB
Group Delay		1.43 [4.69]		ns/ft [ns/m]
Capacitance		29 [95.14]		pF/ft [pF/m]
DC Resistance Inner Conductor		65.7 [215.55]		Ohms/1000ft [Ohms/Km]
DC Resistance Outer Conductor		10.2 [33.46]		Ohms/1000ft [Ohms/Km]

Slide-On BMA Plug Bulkhead to Slide-On BMA  
Plug Bulkhead Cable FM-SR086TBJ Coax

FMCA1558



Electrical Specifications

Description	Minimum	Typical	Maximum	Units
Operating Voltage (AC)			350	Vrms

Specifications by Frequency

Description	F1	F2	F3	F4	F5	Units
Frequency	1	2	4.5	9	20	GHz
Insertion Loss (Typ.)	0.225	0.306	0.509	0.759	1.2	dB/ft
	0.74	1	1.67	2.49	3.94	dB/m

Electrical Specification Notes:  
Insertion Loss does not include the loss of the connectors. Insertion Loss is estimated as 0.1 dB per connector.

Mechanical Specifications

Cable Assembly

Width/Diameter0.315 in [8 mm]

Cable

Cable TypeFM-SR086TBJ

Impedance50 Ohms

Inner Conductor TypeSolid

Inner Conductor Material and PlatingCopper Clad Steel, Silver

Dielectric TypePTFE

Number of Shields1

Outer Conductor 1 Material and PlatingTinned Copper Composite Braid

Jacket MaterialFEP, Black

Jacket Diameter0.105 in [2.67 mm]

One Time Minimum Bend Radius0.5 in [12.7 mm]

Repeated Minimum Bend Radius0.787 in [19.99 mm]

Slide-On BMA Plug Bulkhead to Slide-On BMA Plug Bulkhead Cable FM-SR086TBJ Coax

FMCA1558



Connectors

Description	Connector 1	Connector 2
Type	BMA Plug Bulkhead	BMA Plug Bulkhead
Impedance	50 Ohms	50 Ohms
Configuration	Straight	Straight
Connection Method	Slide-On	Slide-On
Contact Material and Plating	Bronze, Gold	Bronze, Gold
Contact Plating Specification	51.18µ in. minimum	51.18µ in. minimum
Dielectric Type	PTFE	PTFE
Outer Conductor Material and Plating	Brass, Tri-Metal	Brass, Tri-Metal
Outer Conductor Plating Specification	78.74µ in. minimum	78.74µ in. minimum
Body Material and Plating	Brass, Tri-Metal	Brass, Tri-Metal
Body Plating Specification	78.74µ in. minimum	78.74µ in. minimum
Hex Size	8 mm	8 mm

Environmental Specifications

Operating Range Temperature -55 to +125 deg C

Compliance Certifications (see [product page](#) for current document)

Plotted and Other Data

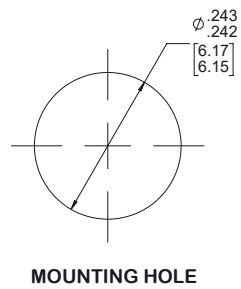
Notes:

Slide-On BMA Plug Bulkhead to Slide-On BMA  
Plug Bulkhead Cable FM-SR086TBJ Coax

**FMCA1558**



#### Typical Performance Data



## Slide-On BMA Plug Bulkhead to Slide-On BMA Plug Bulkhead Cable FM-SR086TBJ Coax

### FMCA1558



#### How to Order

Part Number Configuration:

**FMCA1558**      **- xx**      **uu**

Unit of Measure:  
cm = Centimeters  
<blank> = Inches

Length

Base Number

Example: FMCA1558-12 = 12 inches long cable  
FMCA1558-100cm = 100 cm long cable

Slide-On BMA Plug Bulkhead to Slide-On BMA Plug Bulkhead Cable FM-SR086TBJ Coax from Fairview Microwave is in-stock and available to ship same-day. All of our RF/microwave products are available off-the-shelf from our ISO 9001:2008 certified facilities in Lewisville, Texas. Fairview Microwave is RF on-demand.

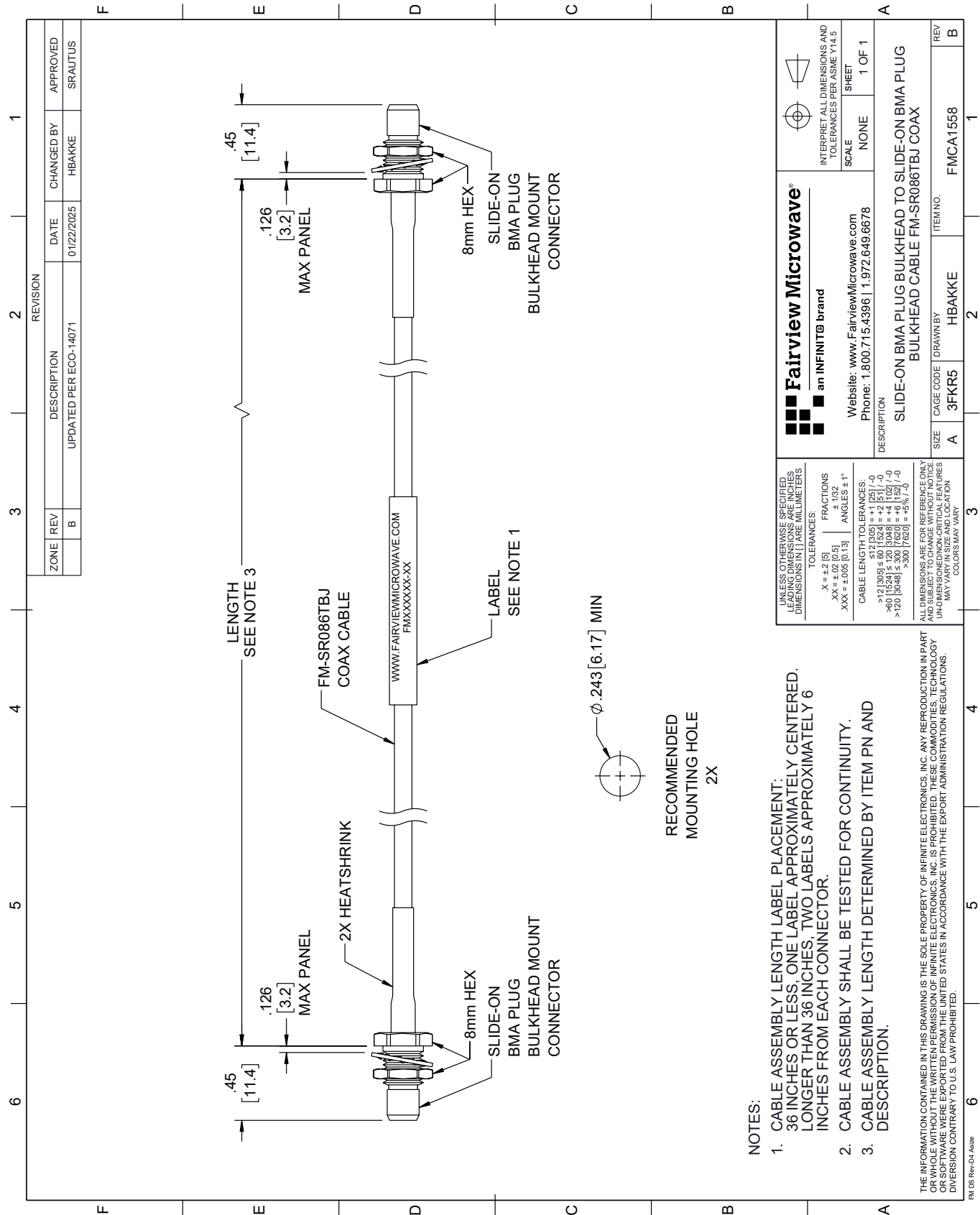
For additional information on this product, please click the following link: [Slide-On BMA Plug Bulkhead to Slide-On BMA Plug Bulkhead Cable FM-SR086TBJ Coax FMCA1558](https://www.fairviewmicrowave.com/bma-plug-bma-plug-cable-rg405-type-.086-coax-fmca1558-p.aspx)

URL: <https://www.fairviewmicrowave.com/bma-plug-bma-plug-cable-rg405-type-.086-coax-fmca1558-p.aspx>

The information contained within this document is accurate to the best of our knowledge and representative of the part described herein. It may be necessary to make modifications to the part and/or the documentation of the part in order to implement improvements. Fairview Microwave reserves the right to make such changes as required. Unless otherwise stated, all specifications are nominal. Fairview Microwave does not make any representation or warranty regarding the suitability of the part described herein for any particular purpose, and Fairview Microwave does not assume liability arising out of the use of any part or document.

FMCA1558 CAD Drawing

Slide-On BMA Plug Bulkhead to Slide-On BMA Plug Bulkhead Cable FM-SR086TBJ Coax



- NOTES:
1. CABLE ASSEMBLY LENGTH LABEL PLACEMENT:  
36 INCHES OR LESS, ONE LABEL APPROXIMATELY CENTERED.  
LONGER THAN 36 INCHES, TWO LABELS APPROXIMATELY 6 INCHES FROM EACH CONNECTOR.
  2. CABLE ASSEMBLY SHALL BE TESTED FOR CONTINUITY.
  3. CABLE ASSEMBLY LENGTH DETERMINED BY ITEM PN AND DESCRIPTION.

THE INFORMATION CONTAINED IN THIS DRAWING IS THE SOLE PROPERTY OF INFINITE ELECTRONICS, INC. ANY REPRODUCTION IN PART OR WHOLE WITHOUT THE WRITTEN PERMISSION OF INFINITE ELECTRONICS, INC. IS PROHIBITED. THESE COMMODITIES, TECHNOLOGY OR SOFTWARE WERE EXPORTED FROM THE UNITED STATES IN ACCORDANCE WITH THE EXPORT ADMINISTRATION REGULATIONS. DIVISION CONTRARY TO U.S. LAW PROHIBITED.

FM DS Rev-D4 Alt2