

Low PIM N Female to N Male Plenum Cable
SPP-250-LLPL Coax in 200 CM

FMCA1313-200CM



Configuration

- Connector 1: N Female
- Connector 2: N Male
- Cable Type: SPP-250-LLPL
- Coax Flex Type: Corrugated

Features

- Max Frequency 6 GHz
- Low PIM: -160 dBc Max
- Shielding Effectivity > 100 dB
- 76% Phase Velocity
- FEP Jacket
- Low PIM < -160 dBc
- IP67 (Mated)
- Low Loss with Excellent VSWR
- PIM Test Results Marked on Each Cable
- UL910 Plenum Rated Cable
- Extremely Flexible and Lightweight



Applications

- General Purpose
- Laboratory Use
- Low PIM Applications
- DAS
- Mobile Networks
- In-Building Wireless
- Small Cells
- PIM Testing

Description

Low PIM N female to N male in 200cm part number FMCA1313-200CM from Fairview Microwave is in-stock and ships same day. This low PIM N female to N male in 200cm plenum coax cable assembly offers low PIM performance to support Distributed Antenna Systems (DAS), in-building wireless and other emerging mobile communication networks. The SPP-250-LLPL coax cable carries a UL910 rating for plenum installations. Each low PIM N female to N male in 200cm cable assembly is marked with its actual Passive Intermodulation (PIM) test result.

Fairview's FMCA1313-200CM datasheet specifications and outline drawing are shown below in this PDF. Our extensive offering of low PIM cable assemblies, low-PIM adapters and other RF products support multi-carrier system prototype, cable installations and PIM testing applications.

Electrical Specifications

| Description | Minimum | Typical | Maximum | Units |
|---|---------|-------------|---------|--------------|
| Frequency Range | DC | | 6 | GHz |
| VSWR | | | 1.35:1 | |
| Velocity of Propagation | | 76 | | % |
| RF Shielding | 100 | | | dB |
| Passive Intermodulation IM3 (2x43dBm Tones) at 850 MHz or 1900 MHz | | -165 | -160 | dBc |
| Capacitance | | 26.7 [87.6] | | pF/ft [pF/m] |

Low PIM N Female to N Male Plenum Cable
SPP-250-LLPL Coax in 200 CM



FMCA1313-200CM

Electrical Specifications

| Description | Minimum | Typical | Maximum | Units |
|------------------------|---------|---------|---------|-------|
| Operating Voltage (AC) | | | 750 | Vrms |

Specifications by Frequency

| Description | F1 | F2 | F3 | F4 | F5 | Units |
|-----------------------|--------|--------|--------|--------|--------|-------|
| Frequency | 0.5 | 1 | 2 | 4 | 6 | GHz |
| Insertion Loss (Max.) | 0.66 | 0.77 | 0.94 | 1.18 | 1.38 | dB |
| VSWR (Max.) | 1.25:1 | 1.25:1 | 1.25:1 | 1.35:1 | 1.35:1 | |
| Power Handling (Max.) | 850 | 507 | 460 | 370 | 250 | Watts |

Electrical Specification Notes:

Values at 25°C, sea level

PIM test results vary between cables

The Insertion Loss data above is based on the performance specifications of the coax used in this assembly. The Insertion Loss includes an estimated loss of 0.4dB of connector loss.

Mechanical Specifications

Cable Assembly

| | |
|----------------|-----------------------|
| Length | 78.74 in [200 cm] |
| Width/Diameter | .28 in [7.11 mm] |
| Weight | 0.6017 lbs [272.93 g] |

Cable

| | |
|--------------------------------------|--------------------------------|
| Cable Type | SPP-250-LLPL |
| Inner Conductor Type | Solid |
| Inner Conductor Material and Plating | Copper, Bare |
| Dielectric Type | PTFE |
| Number of Shields | 1 |
| Shield Layer 1 | Annular Corrugated Copper Tube |
| Outer Conductor Diameter | 0.25 in [6.35 mm] |
| Jacket Material | FEP |
| Jacket Diameter | 0.28 in [7.11 mm] |
| One Time Minimum Bend Radius | 1.5 in [38.1 mm] |

Low PIM N Female to N Male Plenum Cable
SPP-250-LLPL Coax in 200 CM



FMCA1313-200CM

Connectors

| Description | Connector 1 | Connector 2 |
|------------------------------|--------------------------|------------------|
| Type | N Female | N Male |
| Impedance | 50 Ohms | 50 Ohms |
| Configuration | Straight | Straight |
| Contact Material and Plating | Beryllium Copper, Silver | Brass, Silver |
| Dielectric Type | PTFE | PTFE |
| Body Material and Plating | Brass, Tri-Metal | Brass, Tri-Metal |
| Seal Gasket Material | Silicone Rubber | Silicone Rubber |

Environmental Specifications

| | |
|-----------------------------|-------------------|
| Operating Range Temperature | -55 to +125 deg C |
| Plenum Rating | UL910 |

Compliance Certifications (see [product page](#) for current document)

Plotted and Other Data

Notes:
Values at 25°C, sea level.

Low PIM N Female to N Male Plenum Cable
SPP-250-LLPL Coax in 200 CM

FMCA1313-200CM



Typical Performance Data

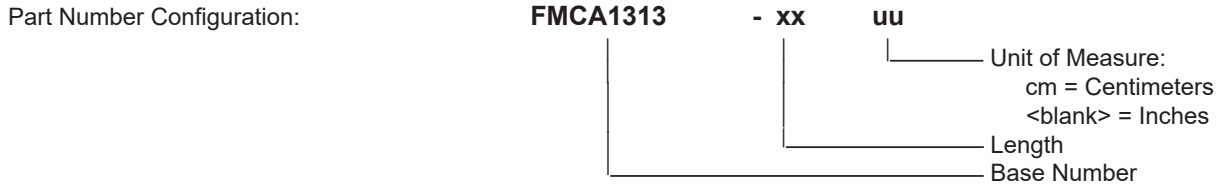


Low PIM N Female to N Male Plenum Cable
SPP-250-LLPL Coax in 200 CM



FMCA1313-200CM

How to Order



Example: FMCA1313-12 = 12 inches long cable
FMCA1313-100cm = 100 cm long cable

Low PIM N Female to N Male Plenum Cable SPP-250-LLPL Coax in 200 CM from Fairview Microwave is in-stock and available to ship same-day. All of our RF/microwave products are available off-the-shelf from our ISO 9001:2008 certified facilities in Lewisville, Texas. Fairview Microwave is RF on-demand.

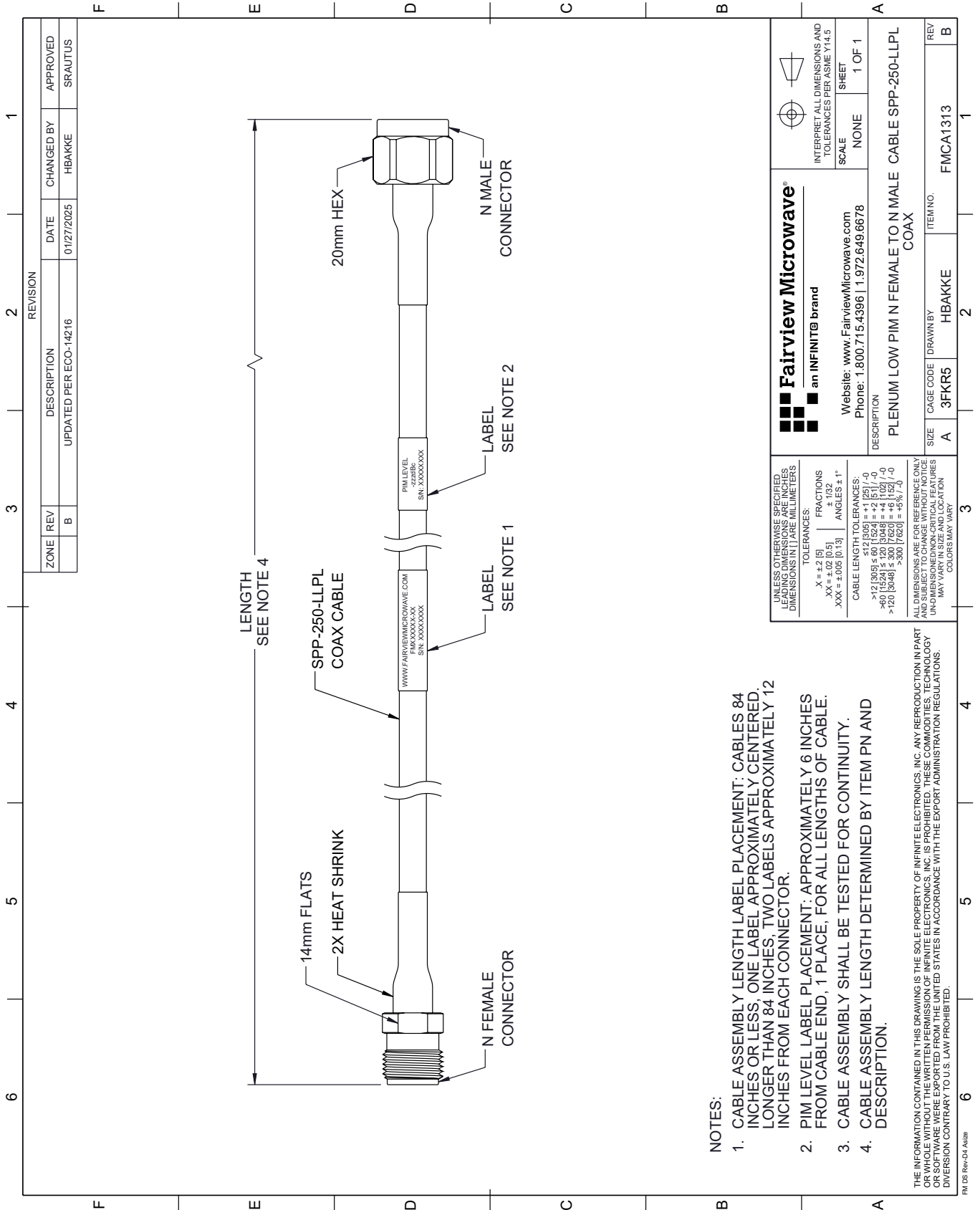
For additional information on this product, please click the following link: [Low PIM N Female to N Male Plenum Cable SPP-250-LLPL Coax in 200 CM FMCA1313-200CM](#)

URL: <https://www.fairviewmicrowave.com/low-pim-n-female-n-male-cable-spp250llpl-coax-fmca1313-200cm-p.aspx>

The information contained within this document is accurate to the best of our knowledge and representative of the part described herein. It may be necessary to make modifications to the part and/or the documentation of the part in order to implement improvements. Fairview Microwave reserves the right to make such changes as required. Unless otherwise stated, all specifications are nominal. Fairview Microwave does not make any representation or warranty regarding the suitability of the part described herein for any particular purpose, and Fairview Microwave does not assume liability arising out of the use of any part or document.

FMCA1313-200CM CAD Drawing

Low PIM N Female to N Male Plenum Cable SPP-250-LLPL Coax in 200 CM



| REVISION | | DATE | CHANGED BY | APPROVED |
|----------|-----|-----------------------|------------|----------|
| ZONE | REV | DESCRIPTION | | |
| B | | UPDATED PER ECO-14216 | HBAKKE | SRAUTUS |

| | | |
|---|-----------|---|
| <p>Fairview Microwave® an INFINIT® brand</p> <p>Website: www.FairviewMicrowave.com Phone: 1.800.715.4396 1.972.649.6678</p> | | <p>INTERPRET ALL DIMENSIONS AND TOLERANCES PER ASME Y14.5</p> <p>SCALE: NONE</p> <p>SHEET: 1 OF 1</p> |
| <p>DESCRIPTION: PLENUM LOW PIM N FEMALE TO N MALE CABLE SPP-250-LLPL COAX</p> | | |
| SIZE | CAGE CODE | ITEM NO. |
| A | 3FKR5 | HBAKKE |
| | | REV B |

UNLESS OTHERWISE SPECIFIED, LEADING DIMENSIONS ARE IN INCHES AND TRAILING DIMENSIONS ARE IN MILLIMETERS.

TOLERANCES:
 .X = ±.2 (5) FRACTIONS ± 1/32
 .XX = ±.02 (0.5) ± 1/32
 .XXX = ±.005 (0.13) ANGLES ± 1°

CABLE LENGTH TOLERANCES:
 >12 (305) ≤ 60 (1524) = ±.1 (25) / -0
 >60 (1524) ≤ 120 (3048) = ±.4 (102) / -0
 >120 (3048) ≤ 300 (7620) = ±.6 (152) / -0
 >300 (7620) = ±.6 (152) / -0

ALL DIMENSIONS ARE FOR REFERENCE ONLY. DIMENSIONS OF PARTS MAY VARY FROM DIMENSIONS OF THE DRAWING. UNDIMENSIONED/UNCLEAR FEATURES MAY VARY IN SIZE AND LOCATION. COLORS MAY VARY.

THE INFORMATION CONTAINED IN THIS DRAWING IS THE SOLE PROPERTY OF INFINITE ELECTRONICS, INC. ANY REPRODUCTION IN PART OR WHOLE WITHOUT THE WRITTEN PERMISSION OF INFINITE ELECTRONICS, INC. IS PROHIBITED. THESE COMMODITIES, TECHNOLOGY OR SOFTWARE WERE EXPORTED FROM THE UNITED STATES IN ACCORDANCE WITH THE EXPORT ADMINISTRATION REGULATIONS. DIVERSION CONTRARY TO U.S. LAW PROHIBITED.

FM DS Rev-D4 A42b

NOTES:

1. CABLE ASSEMBLY LABEL PLACEMENT: CABLES 84 INCHES OR LESS, ONE LABEL APPROXIMATELY CENTERED, LONGER THAN 84 INCHES, TWO LABELS APPROXIMATELY 12 INCHES FROM EACH CONNECTOR.
2. PIM LEVEL LABEL PLACEMENT: APPROXIMATELY 6 INCHES FROM CABLE END, 1 PLACE, FOR ALL LENGTHS OF CABLE.
3. CABLE ASSEMBLY SHALL BE TESTED FOR CONTINUITY.
4. CABLE ASSEMBLY LENGTH DETERMINED BY ITEM PN AND DESCRIPTION.