

## Low Loss SMA Male to SMA Male Weatherproof Cable LMR-240 Coax with Times Microwave Components



### FMCA1155/WP

#### Configuration

- Connector 1: SMA Male
- Connector 2: SMA Male
- Cable Type: LMR-240
- Coax Flex Type: Flexible

#### Features

- Max Frequency 6 GHz
- Shielding Effectivity > 90 dB
- 84% Phase Velocity
- Double Shielded
- PE Jacket
- Silicone Connector Boot
- IP68 Rated



#### Applications

- General Purpose
- Laboratory Use

#### Description

The Fairview Microwave FMCA1155/WP is a weatherproof low loss cable assembly that comes with SMA male connection with weatherproof boot on one end and SMA male with weatherproof boot on the other. Fairview Microwave's RF coaxial cable assembly products are designed for typical use, production, laboratory test and measurement, defense/military, aerial antenna towers, etc. The low loss cable has a 50 Ohm impedance and is specifically ready for quicker shipment than most in the industry can provide.

This weatherproof low loss RF cable assembly operates at a maximum frequency of 6 GHz. Our RF cable assembly has a PE jacket with 0.240 inches diameter. The SMA male to SMA male cable assembly FMCA1155/WP is built with LMR-240 coax, which has a flexible design. This RF cable assembly with 0.5 inches diameter has copper as cable's inner conducting material and PE (F) dielectric type. The weatherproof boot low loss cable is reusable and can withstand elements including extreme temperature. Additional dimensions, specifications, and CAD drawings for this FMCA1155/WP low loss RF cable are available on our downloadable PDF datasheet.

Fairview Microwave stocks a wide selection of weatherproof low loss cable assemblies that ship the same business day as ordered from our warehouse. Make your online purchase right now to take advantage of our same-day shipping. For further information on similar products, our expert technical support and knowledgeable sales team can help you get the ideal SMA male to SMA male cable assembly as per your requirements.

#### Electrical Specifications

Description	Minimum	Typical	Maximum	Units
Frequency Range	DC		6	GHz
VSWR			1.4:1	
Velocity of Propagation		84		%
RF Shielding	90			dB
Capacitance		24.2 [79.4]		pF/ft [pF/m]
Inductance		0.06 [0.2]		uH/ft [uH/m]

Low Loss SMA Male to SMA Male Weatherproof Cable  
LMR-240 Coax with Times Microwave Components



**FMCA1155/WP**

**Electrical Specifications**

Description	Minimum	Typical	Maximum	Units
DC Resistance Inner Conductor		3.2 [10.5]		Ohms/1000ft [Ohms/Km]
DC Resistance Outer Conductor		3.89 [12.76]		Ohms/1000ft [Ohms/Km]
Dielectric Withstanding Voltage (DC)			1,500	Vdc
Jacket Spark			5,000	Vrms

**Specifications by Frequency**

Part Number	Length	Description	F1	F2	F3	F4	F5	Units	Weight (lbs)
			250	500	1000	2500	6000	MHz	
FMCA1155/WP	Custom Lengths Available	Insertion Loss (Typ.)	0.039	0.055	0.079	0.129	0.204	dB/ft	
			0.13	0.19	0.26	0.43	0.67	dB/m	
FMCA1155/WP-12	12 Inch	Insertion Loss (Typ.)	0.24	0.26	0.28	0.33	0.41	dB	1.075
FMCA1155/WP-24	24 Inch	Insertion Loss (Typ.)	0.28	0.31	0.36	0.46	0.61	dB	1.108
FMCA1155/WP-36	36 Inch	Insertion Loss (Typ.)	0.32	0.37	0.44	0.59	0.82	dB	1.141
FMCA1155/WP-48	48 Inch	Insertion Loss (Typ.)	0.36	0.42	0.52	0.72	1.02	dB	1.174
FMCA1155/WP-60	60 Inch	Insertion Loss (Typ.)	0.4	0.48	0.6	0.85	1.22	dB	1.207

The insertion loss data for the base model does not include loss due to the connectors. Each length includes insertion loss due to the connectors.

Loss due to Connector 1:	0.1 dB
Loss due to Connector 2:	0.1 dB
Base Weight:	1.075 pounds
Additional Weight per Inch:	0.00275 pounds

**Mechanical Specifications**

**Cable Assembly**

Width/Diameter	0.5 in [12.7 mm]
Weight	1.075 lbs [487.61 g]

**Cable**

Cable Type	LMR-240
Impedance	50 Ohms
Inner Conductor Type	Solid
Inner Conductor Material and Plating	Copper
Dielectric Type	PE (F)
Number of Shields	2
Shield Layer 1	Aluminum Tape
Shield Layer 2	Tinned Copper Braid
Jacket Material	PE
Jacket Diameter	0.24 in [6.1 mm]
One Time Minimum Bend Radius	0.75 in [19.05 mm]
Repeated Minimum Bend Radius	2.5 in [63.5 mm]
Bending Moment	0.25 lbs-ft [0.34 N-m]
Flat Plate Crush	20 lbs/in [0.36 Kg/mm]

Low Loss SMA Male to SMA Male Weatherproof Cable  
LMR-240 Coax with Times Microwave Components



**FMCA1155/WP**

Tensile Strength 80 lbs [36.29 Kg]

**Connectors**

Description	Connector 1	Connector 2
Type	SMA Male	SMA Male
Option	Weatherproof Boot	Weatherproof Boot
Specification	MIL-STD-348	MIL-STD-348
Impedance	50 Ohms	50 Ohms
Configuration	Straight	Straight
Contact Material and Plating	Beryllium Copper, Gold	Beryllium Copper, Gold
Contact Plating Specification	ASTM B488	ASTM B488
Dielectric Type	PTFE	PTFE
Outer Conductor Material and Plating	Passivated Stainless Steel, Gold	Passivated Stainless Steel, Gold
Body Material and Plating	Passivated Stainless Steel, Gold	Passivated Stainless Steel, Gold
Body Plating Specification	SAE-AMS-2700	SAE-AMS-2700
Coupling Nut Material and Plating	Passivated Stainless Steel	Passivated Stainless Steel
Coupling Nut Plating Specification	SAE-AMS-2700	SAE-AMS-2700
Boot Material	Silicone	Silicone

**Environmental Specifications**

Ingress Protection (IP) Rating IP68

**Compliance Certifications** (see [product page](#) for current document)

**Plotted and Other Data**

Notes:  
Values at 25°C, sea level.

Low Loss SMA Male to SMA Male Weatherproof Cable  
LMR-240 Coax with Times Microwave Components

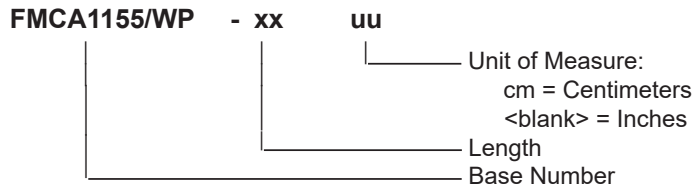


**FMCA1155/WP**

**Typical Performance Data**

**How to Order**

Part Number Configuration:



Example: FMCA1155/WP-12 = 12 inches long cable  
FMCA1155/WP-100cm = 100 cm long cable

Low Loss SMA Male to SMA Male Weatherproof Cable LMR-240 Coax with Times Microwave Components from Fairview Microwave is in-stock and available to ship same-day. All of our RF/microwave products are available off-the-shelf from our ISO 9001:2008 certified facilities in Lewisville, Texas. Fairview Microwave is RF on-demand.

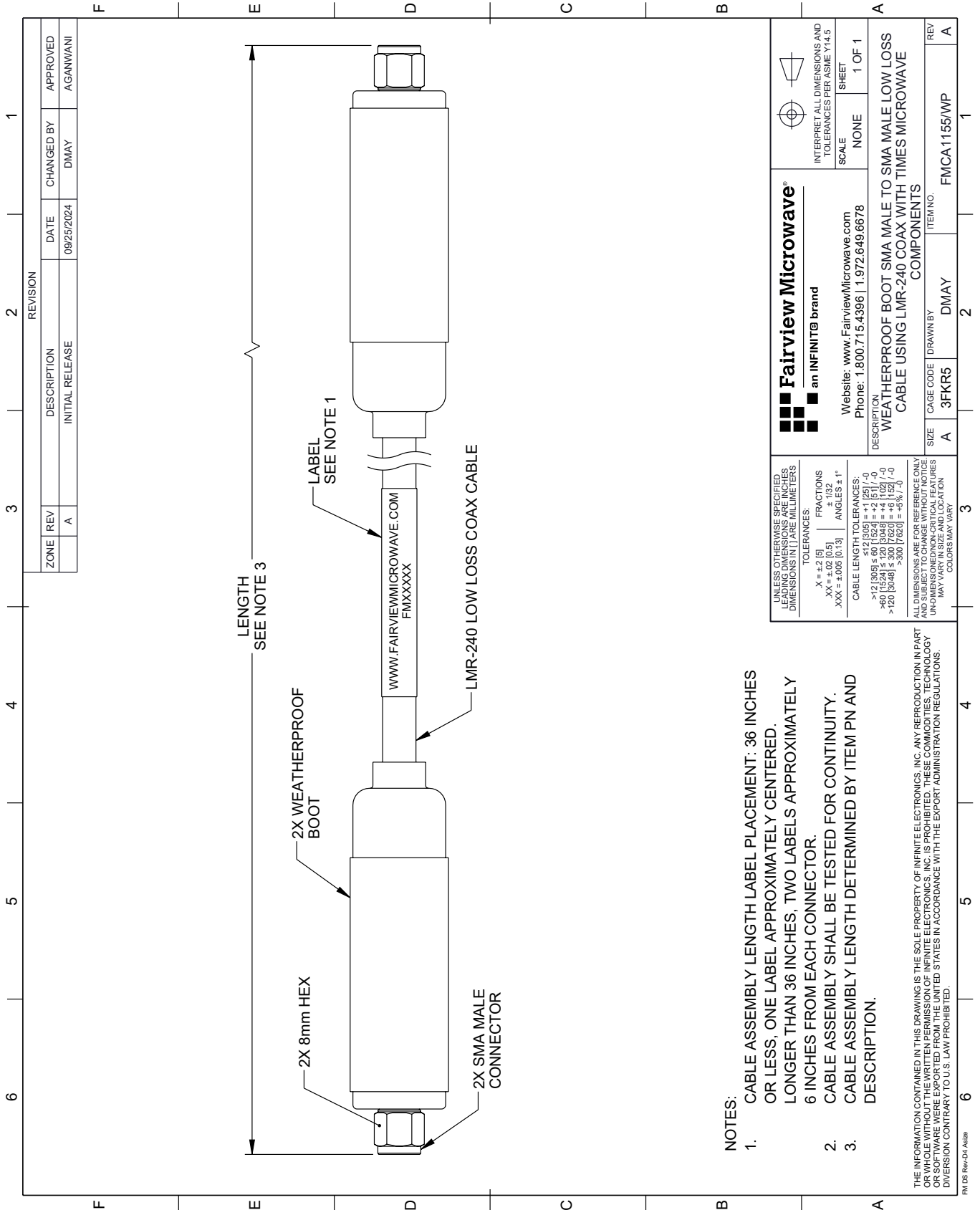
For additional information on this product, please click the following link: [Low Loss SMA Male to SMA Male Weatherproof Cable LMR-240 Coax with Times Microwave Components FMCA1155/WP](#)

URL: <https://www.fairviewmicrowave.com/low-loss-sma-male-to-sma-male-weatherproof-cable-lmr-240-coax-with-times-microwave-components-fmca1155-wp-p.aspx>

The information contained within this document is accurate to the best of our knowledge and representative of the part described herein. It may be necessary to make modifications to the part and/or the documentation of the part in order to implement improvements. Fairview Microwave reserves the right to make such changes as required. Unless otherwise stated, all specifications are nominal. Fairview Microwave does not make any representation or warranty regarding the suitability of the part described herein for any particular purpose, and Fairview Microwave does not assume liability arising out of the use of any part or document.

# FMCA1155/WP CAD Drawing

Low Loss SMA Male to SMA Male Weatherproof Cable LMR-240 Coax with Times Microwave Components



**NOTES:**

1. CABLE ASSEMBLY LENGTH LABEL PLACEMENT: 36 INCHES OR LESS, ONE LABEL APPROXIMATELY CENTERED. LONGER THAN 36 INCHES, TWO LABELS APPROXIMATELY 6 INCHES FROM EACH CONNECTOR.
2. CABLE ASSEMBLY SHALL BE TESTED FOR CONTINUITY.
3. CABLE ASSEMBLY LENGTH DETERMINED BY ITEM PN AND DESCRIPTION.

THE INFORMATION CONTAINED IN THIS DRAWING IS THE SOLE PROPERTY OF INFINITE ELECTRONICS, INC. ANY REPRODUCTION IN PART OR WHOLE WITHOUT THE WRITTEN PERMISSION OF INFINITE ELECTRONICS, INC. IS PROHIBITED. THESE COMMODITIES, TECHNOLOGY OR SOFTWARE WERE EXPORTED FROM THE UNITED STATES IN ACCORDANCE WITH THE EXPORT ADMINISTRATION REGULATIONS. DIVERSION CONTRARY TO U.S. LAW PROHIBITED.

<p><b>Fairview Microwave</b> an INFINIT® brand</p> <p>Website: <a href="http://www.FairviewMicrowave.com">www.FairviewMicrowave.com</a> Phone: 1.800.715.4396   1.972.649.6678</p>		<p>INTERPRET ALL DIMENSIONS AND TOLERANCES PER ASME Y14.5</p> <p>SCALE: NONE</p> <p>SHEET: 1 OF 1</p>
<p>UNLESS OTHERWISE SPECIFIED, LEADING DIMENSIONS ARE IN INCHES AND TRAILING DIMENSIONS ARE IN MILLIMETERS</p> <p>TOLERANCES:          .X = ±.2 (5)          .XX = ±.02 (0.5)          .XXX = ±.005 (0.13)          FRACTIONS: ± 1/32          ANGLES: ± 1°</p> <p>CABLE LENGTH TOLERANCES:          &gt;12 (305) ≤ 60 (1524) = ±1 (25) / -0          &gt;60 (1524) ≤ 120 (3048) = ±4 (102) / -0          &gt;120 (3048) ≤ 300 (7620) = ±5% / -0</p> <p>ALL DIMENSIONS ARE FOR REFERENCE ONLY. UNDIMENSIONED/NON-CRITICAL FEATURES MAY VARY IN SIZE AND LOCATION. COLORS MAY VARY.</p>		
<p>DESCRIPTION WEATHERPROOF BOOT SMA MALE TO SMA MALE LOW LOSS CABLE USING LMR-240 COAX WITH TIMES MICROWAVE COMPONENTS</p>		<p>REV: A</p>
<p>SIZE: A</p>	<p>CAGE CODE: 3FKR5</p>	<p>ITEM NO.: FMCA1155/WP</p>
<p>DRAWN BY: DMAY</p>	<p>APPROVED BY: AGANWANI</p>	<p>DATE: 09/25/2024</p>
<p>INITIAL RELEASE</p>	<p>CHANGED BY: DMAY</p>	<p>APPROVED BY: AGANWANI</p>
<p>REVISION</p>	<p>DATE: 09/25/2024</p>	<p>APPROVED BY: AGANWANI</p>