

VITA 67.3 Smooth Bore Mini SMP Male to Smooth Bore Mini SMP Male Cable FM-F086HF Coax



FMCA100378

Configuration

- Connector 1: Smooth Bore Mini SMP Male
- Connector 2: Smooth Bore Mini SMP Male
- Cable Type: FM-F086HF
- Coax Flex Type: Flexible

Features

- Max Frequency 26.5 GHz
- 70% Phase Velocity
- Double Shielded
- FEP Jacket
- 500 Mating Cycles

Applications

- General Purpose
- Laboratory Use

Description

The Mini SMP male smooth bore to Mini SMP male smooth bore cable using FM-F086HF coax, part number FMCA100378, from Fairview Microwave is in-stock and ships same day. This Fairview Mini SMP to Mini SMP cable assembly has a male to male gender configuration with 50 ohm flexible FM-F086HF coax. Fairview Microwave's flexible RF cable assemblies are ideal for applications where tight bends and continual flexure are required. The FMCA100378 Mini SMP male to Mini SMP male cable assembly operates to 26.5 GHz. The double shielding of this Fairview cable assembly provides excellent shielding effectiveness.

Custom versions of most RF cable assemblies can be built and shipped same day. Custom cable assembly lengths can be obtained by specifying the desired length on the web site at time of order or by contacting a sales representative. Other RF cable assembly value added services including connector orientation or clocking, heat shrink booting and labeling are also available. RF testing can also be performed to document the electrical performance of your cable assembly.

Electrical Specifications

Description	Minimum	Typical	Maximum	Units
Frequency Range	DC		26.5	GHz
VSWR			1.4:1	
Velocity of Propagation		70		%
Capacitance		29.4 [96.46]		pF/ft [pF/m]

Specifications by Frequency

VITA 67.3 Smooth Bore Mini SMP Male to Smooth Bore Mini SMP Male Cable FM-F086HF Coax



FMCA100378

Part Number	Length	Description	F1	F2	F3	F4	F5	Units	Weight (lbs)
			Frequency	1000	2000	4500	9000	26500	
FMCA100378	Custom Lengths Available	Insertion Loss (Typ.)	0.192	0.277	0.429	0.631	1.18	dB/ft	
			0.63	0.91	1.41	2.08	3.88	dB/m	
FMCA100378-6	6 In	Insertion Loss (Typ.)	0.3	0.34	0.42	0.52	0.79	dB	0.01
FMCA100378-9	9 In	Insertion Loss (Typ.)	0.35	0.41	0.53	0.68	1.09	dB	0.013
FMCA100378-12	12 In	Insertion Loss (Typ.)	0.4	0.48	0.63	0.84	1.38	dB	0.017
FMCA100378-18	18 In	Insertion Loss (Typ.)	0.49	0.62	0.85	1.15	1.97	dB	0.023
FMCA100378-24	24 In	Insertion Loss (Typ.)	0.59	0.76	1.06	1.47	2.56	dB	0.03

The insertion loss data for the base model does not include loss due to the connectors. Each length includes insertion loss due to the connectors.

Loss due to Connector 1: 0.1 dB
 Loss due to Connector 2: 0.1 dB
 Base Weight: 0.0162 pounds
 Additional Weight per Inch: 0.00109 pounds

Mechanical Specifications

Cable Assembly

Width/Diameter: 0.5 in [12.7 mm]
 Weight: 0.017 lbs [7.71 g]

Cable

Cable Type: FM-F086HF
 Impedance: 50 Ohms
 Inner Conductor Type: Solid
 Inner Conductor Material and Plating: Copper Clad Steel, Silver
 Dielectric Type: PTFE
 Number of Shields: 2
 Shield Layer 1: Silver Plated Copper Tape
 Shield Layer 2: Silver Plated Copper Braid
 Jacket Material: FEP, Blue
 Jacket Diameter: 0.104 in [2.64 mm]
 One Time Minimum Bend Radius: 0.52 in [13.21 mm]

VITA 67.3 Smooth Bore Mini SMP Male to Smooth Bore Mini SMP Male Cable FM-F086HF Coax



FMCA100378

Connectors

Description	Connector 1	Connector 2
Type	Mini SMP Male	Mini SMP Male
Impedance	50 Ohms	50 Ohms
Configuration	Straight	Straight
Connection Method	Smooth Bore	Smooth Bore
Mating Cycles	500	500
Contact Material and Plating	Beryllium Copper, Gold	Beryllium Copper, Gold
Contact Plating Specification	ASTM B488	ASTM B488
Dielectric Type	PTFE	PTFE
Body Material and Plating	Beryllium Copper, Gold	Beryllium Copper, Gold
Body Plating Specification	ASTM B488	ASTM B488

Environmental Specifications

Operating Range Temperature -55 to +125 deg C

Compliance Certifications (see [product page](#) for current document)

Plotted and Other Data

Notes:

VITA 67.3 Smooth Bore Mini SMP Male to Smooth Bore Mini SMP Male Cable FM-F086HF Coax



FMCA100378

Typical Performance Data

How to Order

Part Number Configuration:

FMCA100378

- xx

uu



Example: FMCA100378-12 = 12 inches long cable
FMCA100378-100cm = 100 cm long cable

VITA 67.3 Smooth Bore Mini SMP Male to Smooth Bore Mini SMP Male Cable FM-F086HF Coax from Fairview Microwave is in-stock and available to ship same-day. All of our RF/microwave products are available off-the-shelf from our ISO 9001:2008 certified facilities in Lewisville, Texas. Fairview Microwave is RF on-demand.

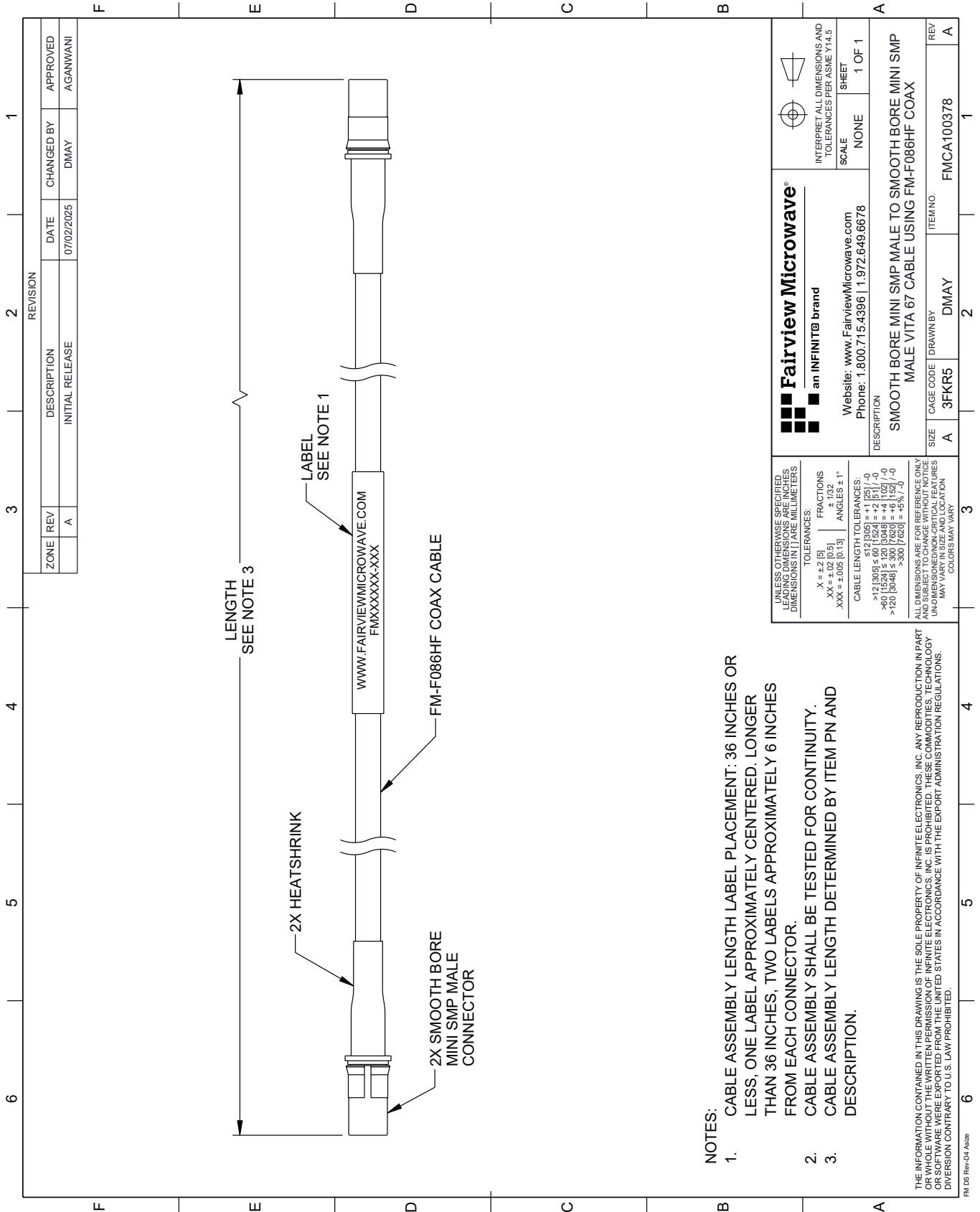
For additional information on this product, please click the following link: [VITA 67.3 Smooth Bore Mini SMP Male to Smooth Bore Mini SMP Male Cable FM-F086HF Coax FMCA100378](https://www.fairviewmicrowave.com/vita-67.3-smooth-bore-mini-smp-male-to-smooth-bore-mini-smp-male-cable-fm-f086hf-coax-fmca100378)

URL: <https://www.fairviewmicrowave.com/vita-67.3-smooth-bore-mini-smp-male-to-smooth-bore-mini-smp-male-cable-fm-f086hf-coax-fmca100378-p.aspx>

The information contained within this document is accurate to the best of our knowledge and representative of the part described herein. It may be necessary to make modifications to the part and/or the documentation of the part in order to implement improvements. Fairview Microwave reserves the right to make such changes as required. Unless otherwise stated, all specifications are nominal. Fairview Microwave does not make any representation or warranty regarding the suitability of the part described herein for any particular purpose, and Fairview Microwave does not assume liability arising out of the use of any part or document.

FMCA100378 CAD Drawing

VITA 67.3 Smooth Bore Mini SMP Male to Smooth Bore Mini SMP Male Cable FM-F086HF Coax



NOTES:

1. CABLE ASSEMBLY LENGTH LABEL PLACEMENT: 36 INCHES OR LESS, ONE LABEL APPROXIMATELY CENTERED. LONGER THAN 36 INCHES, TWO LABELS APPROXIMATELY 6 INCHES FROM EACH CONNECTOR.
2. CABLE ASSEMBLY SHALL BE TESTED FOR CONTINUITY.
3. CABLE ASSEMBLY LENGTH DETERMINED BY ITEM PN AND DESCRIPTION.

THE INFORMATION CONTAINED IN THIS DRAWING IS THE SOLE PROPERTY OF INFINITE ELECTRONICS, INC. ANY REPRODUCTION IN PART OR WHOLE WITHOUT THE WRITTEN PERMISSION OF INFINITE ELECTRONICS, INC. IS PROHIBITED. THESE COMMODITIES, TECHNOLOGY OR SOFTWARE WERE EXPORTED FROM THE UNITED STATES IN ACCORDANCE WITH THE EXPORT ADMINISTRATION REGULATIONS. DIVISION CONTRARY TO U.S. LAW PROHIBITED.

FM_DS Rev-D4 Alt26

REVISION		DATE	CHANGED BY	APPROVED
ZONE	REV			
	A	07/02/2025	DMAY	AGANWANI
DESCRIPTION				
INITIAL RELEASE				

<p>Fairview Microwave® an INFINITE® brand</p> <p>Website: www.FairviewMicrowave.com Phone: 1.800.715.4396 1.972.649.6678</p>		<p>INTERPRET ALL DIMENSIONS AND TOLERANCES PER ASME Y14.5</p> <p>SCALE: NONE SHEET: 1 OF 1</p>
<p>UNLESS OTHERWISE SPECIFIED, LEADING DIMENSIONS ARE IN INCHES. DIMENSIONS IN [] ARE MILLIMETERS.</p> <p>TOLERANCES: .X = ±.2 [5] .XX = ±.02 [0.5] .XXX = ±.005 [0.13] FRACTIONS: ± 1/32 ANGLES: ± 1°</p> <p>CABLE LENGTH TOLERANCES: <12 [305] ≤ 60 [1524] = ±.1 [25] / -0 >60 [1524] ≤ 120 [3048] = ±.4 [102] / -0 >120 [3048] ≤ 300 [7620] = ±.8 [20] / -0</p> <p>ALL DIMENSIONS ARE FOR REFERENCE ONLY. UNDIMENSIONED/NON-CRITICAL FEATURES MAY VARY IN SIZE AND LOCATION. COLORS MAY VARY.</p>		
DESCRIPTION	SIZE	ITEM NO.
SMOOTH BORE MINI SMP MALE VITA 67 CABLE USING FM-F086HF COAX	A	FMCA100378
CAGE CODE	DRAWN BY	REV
3FKR5	DMAY	A