

VITA 67.3 SMA Male to SMPS Female Cable FM-P047HF Coax

FMCA100372

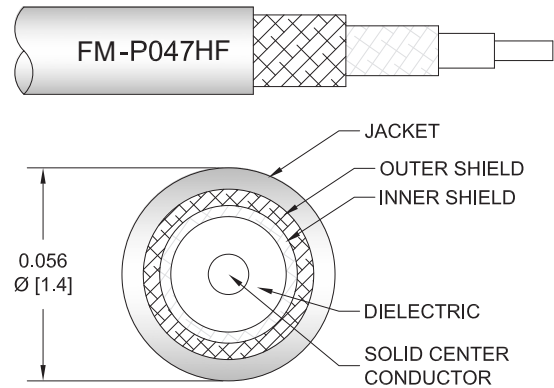


Configuration

- Connector 1: SMA Male
- Connector 2: SMPS Female
- Cable Type: FM-P047HF
- Coax Flex Type: High Flex

Features

- Max Frequency 18 GHz
- Shielding Effectivity > 90 dB
- 70% Phase Velocity
- Double Shielded
- FEP Jacket



Applications

- General Purpose
- Laboratory Use

Description

The SMA male to SMPS female cable using FM-P047HF coax, part number FMCA100372, from Fairview Microwave is in-stock and ships same day. This Fairview SMA to SMPS cable assembly has a male to female gender configuration with 50 ohm high flex FM-P047HF coax. The FMCA100372 SMA male to SMPS female cable assembly operates to 18 GHz. The double shielding of this Fairview cable assembly provides excellent shielding effectiveness of better than 90 dB.

Custom versions of most RF cable assemblies can be built and shipped same day. Custom cable assembly lengths can be obtained by specifying the desired length on the web site at time of order or by contacting a sales representative. Other RF cable assembly value added services including connector orientation or clocking, heat shrink booting and labeling are also available. RF testing can also be performed to document the electrical performance of your cable assembly.

Electrical Specifications

Description	Minimum	Typical	Maximum	Units
Frequency Range	DC		18	GHz
VSWR			1.4:1	
Velocity of Propagation		70		%
RF Shielding	90			dB
Capacitance		29 [95.14]		pF/ft [pF/m]

Specifications by Frequency

VITA 67.3 SMA Male to SMPS Female Cable FM-P047HF Coax

FMCA100372



Part Number	Length	Description	F1	F2	F3	F4	F5	Units	Weight (lbs)
		Frequency	1000	2000	4500	9000	18000	MHz	
FMCA100372	Custom Lengths Available	Insertion Loss (Typ.)	0.35	0.488	0.763	1.107	1.681	dB/ft	
			1.15	1.61	2.51	3.64	5.52	dB/m	
FMCA100372-6	6 In	Insertion Loss (Typ.)	0.38	0.45	0.59	0.76	1.05	dB	0.015
FMCA100372-9	9 In	Insertion Loss (Typ.)	0.47	0.57	0.78	1.04	1.47	dB	0.016
FMCA100372-12	12 In	Insertion Loss (Typ.)	0.55	0.69	0.97	1.31	1.89	dB	0.017
FMCA100372-18	18 In	Insertion Loss (Typ.)	0.73	0.94	1.35	1.87	2.73	dB	0.019
FMCA100372-24	24 In	Insertion Loss (Typ.)	0.9	1.18	1.73	2.42	3.57	dB	0.021

The insertion loss data for the base model does not include loss due to the connectors. Each length includes insertion loss due to the connectors.

Loss due to Connector 1: 0.1 dB
 Loss due to Connector 2: 0.1 dB
 Base Weight: 0.0169 pounds
 Additional Weight per Inch: 0.00034 pounds

Mechanical Specifications

Cable Assembly

Width/Diameter 0.5 in [12.7 mm]
 Weight 0.017 lbs [7.71 g]

Cable

Cable Type FM-P047HF
 Impedance 50 Ohms
 Inner Conductor Type Solid
 Inner Conductor Material and Plating Copper, Silver
 Dielectric Type PTFE
 Number of Shields 2
 Shield Layer 1 Silver Plated Copper Tape
 Shield Layer 2 Silver Plated Copper Braid
 Jacket Material FEP, Blue
 Jacket Diameter 0.06 in [1.52 mm]
 Repeated Minimum Bend Radius 0.1 in [2.54 mm]

VITA 67.3 SMA Male to SMPS Female
Cable FM-P047HF Coax



FMCA100372

Connectors

Description	Connector 1	Connector 2
Type	SMA Male	SMPS Female
Impedance	50 Ohms	50 Ohms
Configuration	Straight	Straight
Mating Cycles	500	
Contact Material and Plating	Beryllium Copper, Gold over Nickel	Beryllium Copper, Gold
Contact Plating Specification	MIL-G-45204	
Dielectric Type	PTFE	PTFE
Outer Conductor Material and Plating		Beryllium Copper, Gold
Body Material and Plating	Brass, Gold	Passivated Stainless Steel
Body Plating Specification	MIL-G-45204	
Coupling Nut Material and Plating	Passivated Stainless Steel	
Coupling Nut Plating Specification	ASTM-A380	
Hex Size	5/16 inch	
Torque	8 in-lbs 0.9 Nm	

Environmental Specifications

Operating Range Temperature -55 to +100 deg C

Compliance Certifications (see [product page](#) for current document)

Plotted and Other Data

Notes:

VITA 67.3 SMA Male to SMPS Female Cable FM-P047HF Coax

FMCA100372



Typical Performance Data

How to Order

Part Number Configuration: **FMCA100372** **- xx** **uu**

Unit of Measure:
cm = Centimeters
<blank> = Inches

Length

Base Number

Example: FMCA100372-12 = 12 inches long cable
FMCA100372-100cm = 100 cm long cable

VITA 67.3 SMA Male to SMPS Female Cable FM-P047HF Coax from Fairview Microwave is in-stock and available to ship same-day. All of our RF/microwave products are available off-the-shelf from our ISO 9001:2008 certified facilities in Lewisville, Texas. Fairview Microwave is RF on-demand.

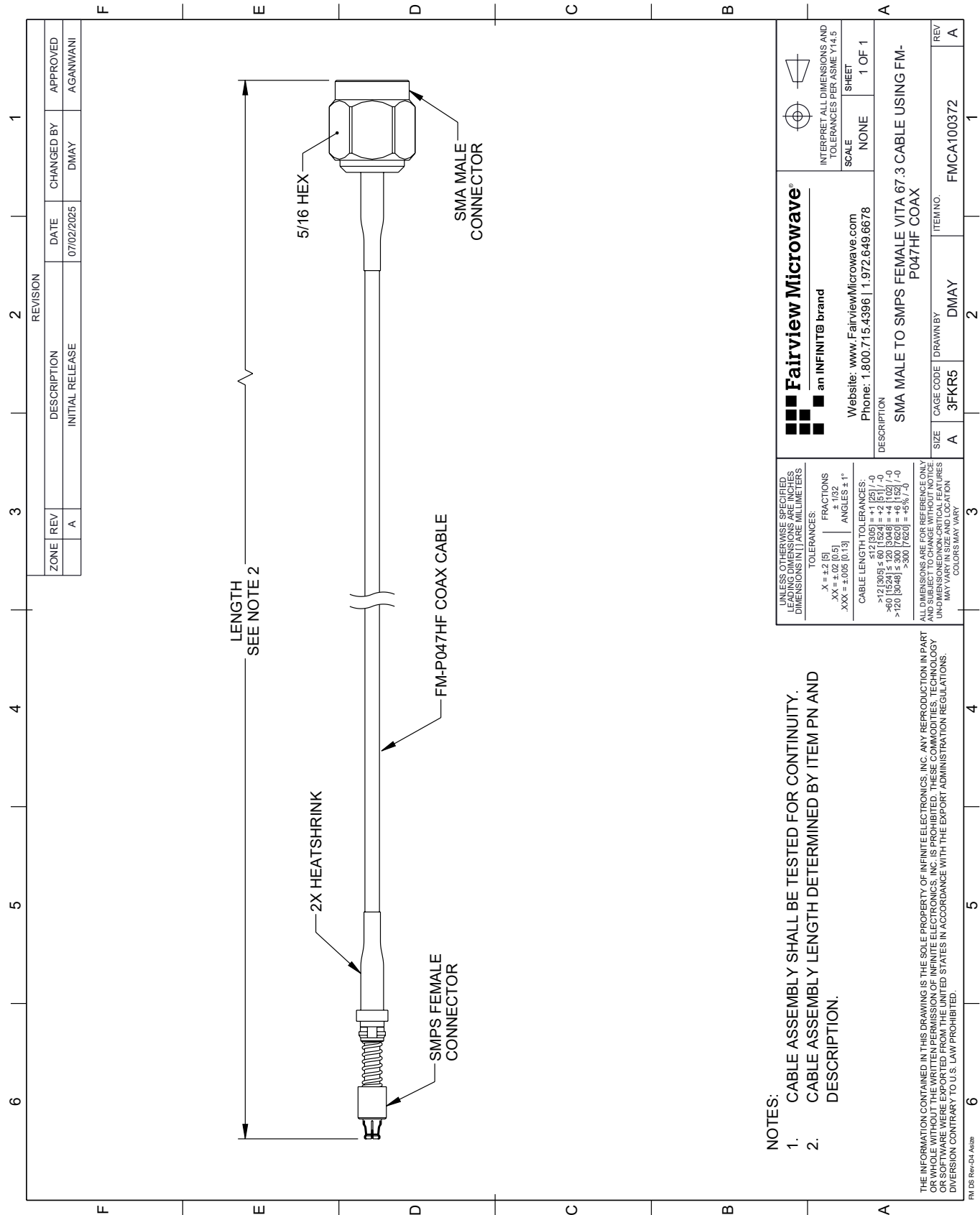
For additional information on this product, please click the following link: [VITA 67.3 SMA Male to SMPS Female Cable FM-P047HF Coax FMCA100372](#)

URL: <https://www.fairviewmicrowave.com/vita-67.3-sma-male-to-smps-female-cable-fm-p047hf-coax-fmca100372-p.aspx>

The information contained within this document is accurate to the best of our knowledge and representative of the part described herein. It may be necessary to make modifications to the part and/or the documentation of the part in order to implement improvements. Fairview Microwave reserves the right to make such changes as required. Unless otherwise stated, all specifications are nominal. Fairview Microwave does not make any representation or warranty regarding the suitability of the part described herein for any particular purpose, and Fairview Microwave does not assume liability arising out of the use of any part or document.

FMCA100372 CAD Drawing

VITA 67.3 SMA Male to SMPS Female Cable FM-P047HF Coax



UNLESS OTHERWISE SPECIFIED, LEADING DIMENSIONS ARE IN INCHES, UNLESS INDICATED OTHERWISE. DIMENSIONS IN [] ARE MILLIMETERS.		Fairview Microwave® an INFINITI® brand		INTERPRET ALL DIMENSIONS AND TOLERANCES PER ASME Y14.5	
TOLERANCES:		Website: www.FairviewMicrowave.com Phone: 1.800.715.4396 1.972.649.6678		SCALE NONE	
X = ±.2 [5] .XX = ±.02 [0.5] .XXX = ±.005 [0.13]		FRACTIONS ± 1/32 ANGLES ± 1°		SHEET 1 OF 1	
CABLE LENGTH TOLERANCES:		DESCRIPTION SMA MALE TO SMPS FEMALE VITA 67.3 CABLE USING FM-P047HF COAX			
>12 [305] ≤ 60 [1524] = ±.125 [-.0]		SIZE A		CAGE CODE 3FKR5	
>60 [1524] ≤ 120 [3048] = ±.102 [-.0]		DRAWN BY DMAY		ITEM NO. FMCA100372	
>120 [3048] ≤ 300 [7620] = ±.063 [-.0]		REV A			
ALL DIMENSIONS ARE FOR REFERENCE ONLY. UNLESS OTHERWISE SPECIFIED, DIMENSIONS ARE IN INCHES. UNLESS INDICATED OTHERWISE, DIMENSIONS IN [] ARE MILLIMETERS. COLORS MAY VARY.					

NOTES:

1. CABLE ASSEMBLY SHALL BE TESTED FOR CONTINUITY.

2. CABLE ASSEMBLY LENGTH DETERMINED BY ITEM PN AND DESCRIPTION.

THE INFORMATION CONTAINED IN THIS DRAWING IS THE SOLE PROPERTY OF INFINITE ELECTRONICS, INC. ANY REPRODUCTION IN PART OR WHOLE WITHOUT THE WRITTEN PERMISSION OF INFINITE ELECTRONICS, INC. IS PROHIBITED. THESE COMMODITIES, TECHNOLOGY OR SOFTWARE WERE EXPORTED FROM THE UNITED STATES IN ACCORDANCE WITH THE EXPORT ADMINISTRATION REGULATIONS. DIVISION CONTRARY TO U.S. LAW PROHIBITED.