

VITA 67.3 Mini SMP Male to Mini SMP Male Cable FM-P047HF Coax



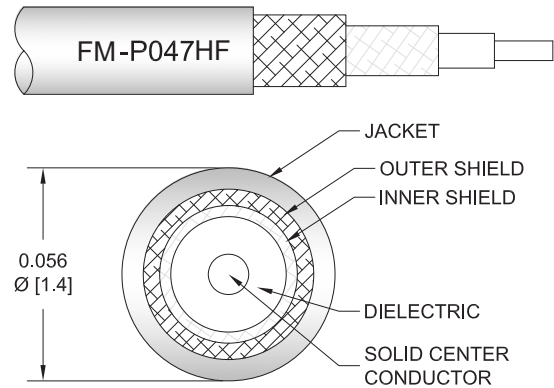
FMCA100370

Configuration

- Connector 1: Mini SMP Male
- Connector 2: Mini SMP Male
- Cable Type: FM-P047HF
- Coax Flex Type: High Flex

Features

- Max Frequency 40 GHz
- Shielding Effectivity > 90 dB
- 70% Phase Velocity
- Double Shielded
- FEP Jacket
- 500 Mating Cycles



Applications

- General Purpose
- Laboratory Use

Description

The Mini SMP male to Mini SMP male cable using FM-P047HF coax, part number FMCA100370, from Fairview Microwave is in-stock and ships same day. This Fairview Mini SMP to Mini SMP cable assembly has a male to male gender configuration with 50 ohm high flex FM-P047HF coax. The FMCA100370 Mini SMP male to Mini SMP male cable assembly operates to 40 GHz. The double shielding of this Fairview cable assembly provides excellent shielding effectiveness of better than 90 dB.

Custom versions of most RF cable assemblies can be built and shipped same day. Custom cable assembly lengths can be obtained by specifying the desired length on the web site at time of order or by contacting a sales representative. Other RF cable assembly value added services including connector orientation or clocking, heat shrink booting and labeling are also available. RF testing can also be performed to document the electrical performance of your cable assembly.

Electrical Specifications

Description	Minimum	Typical	Maximum	Units
Frequency Range	DC		40	GHz
VSWR			1.4:1	
Velocity of Propagation		70		%
RF Shielding	90			dB
Capacitance		29 [95.14]		pF/ft [pF/m]

Specifications by Frequency

VITA 67.3 Mini SMP Male to Mini SMP
Male Cable FM-P047HF Coax



FMCA100370

Part Number	Length	Description	F1	F2	F3	F4	F5	Units	Weight (lbs)
			Frequency	2500	5000	10000	20000	40000	
FMCA100370	Custom Lengths Available	Insertion Loss (Typ.)	0.558	0.808	1.177	1.784	2.774	dB/ft	
			1.84	2.66	3.87	5.86	9.11	dB/m	
FMCA100370-6	6 In	Insertion Loss (Typ.)	0.48	0.61	0.79	1.1	1.59	dB	0.006
FMCA100370-9	9 In	Insertion Loss (Typ.)	0.62	0.81	1.09	1.54	2.29	dB	0.007
FMCA100370-12	12 In	Insertion Loss (Typ.)	0.76	1.01	1.38	1.99	2.98	dB	0.008
FMCA100370-18	18 In	Insertion Loss (Typ.)	1.04	1.42	1.97	2.88	4.37	dB	0.01
FMCA100370-24	24 In	Insertion Loss (Typ.)	1.32	1.82	2.56	3.77	5.75	dB	0.012

The insertion loss data for the base model does not include loss due to the connectors. Each length includes insertion loss due to the connectors.

Loss due to Connector 1: 0.1 dB
 Loss due to Connector 2: 0.1 dB
 Base Weight: 0.0072 pounds
 Additional Weight per Inch: 0.00034 pounds

Mechanical Specifications

Cable Assembly

Width/Diameter 0.5 in [12.7 mm]
 Weight 0.008 lbs [3.63 g]

Cable

Cable Type FM-P047HF
 Impedance 50 Ohms
 Inner Conductor Type Solid
 Inner Conductor Material and Plating Copper, Silver
 Dielectric Type PTFE
 Number of Shields 2
 Shield Layer 1 Silver Plated Copper Tape
 Shield Layer 2 Silver Plated Copper Braid
 Jacket Material FEP, Blue
 Jacket Diameter 0.06 in [1.52 mm]
 Repeated Minimum Bend Radius 0.1 in [2.54 mm]

VITA 67.3 Mini SMP Male to Mini SMP
Male Cable FM-P047HF Coax



FMCA100370

Connectors

Description	Connector 1	Connector 2
Type	Mini SMP Male	Mini SMP Male
Impedance	50 Ohms	50 Ohms
Configuration	Straight	Straight
Mating Cycles	500	500
Contact Material and Plating	Beryllium Copper, Gold	Beryllium Copper, Gold
Contact Plating Specification	ASTM B488	ASTM B488
Dielectric Type	PEI	PEI
Body Material and Plating	Brass, Gold	Brass, Gold
Body Plating Specification	ASTM B488	ASTM B488

Environmental Specifications

Operating Range Temperature -55 to +125 deg C

Compliance Certifications (see [product page](#) for current document)

Plotted and Other Data

Notes:

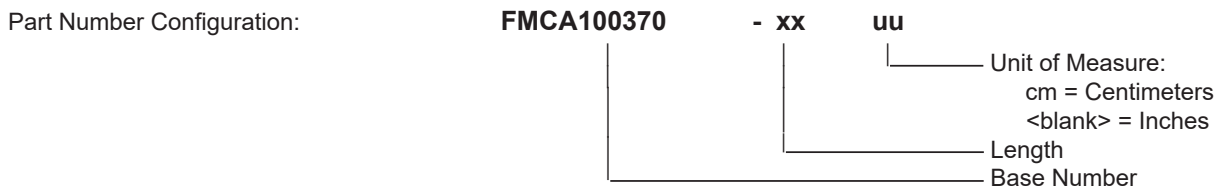
VITA 67.3 Mini SMP Male to Mini SMP Male Cable FM-P047HF Coax



FMCA100370

Typical Performance Data

How to Order



Example: FMCA100370-12 = 12 inches long cable
FMCA100370-100cm = 100 cm long cable

VITA 67.3 Mini SMP Male to Mini SMP Male Cable FM-P047HF Coax from Fairview Microwave is in-stock and available to ship same-day. All of our RF/microwave products are available off-the-shelf from our ISO 9001:2008 certified facilities in Lewisville, Texas. Fairview Microwave is RF on-demand.

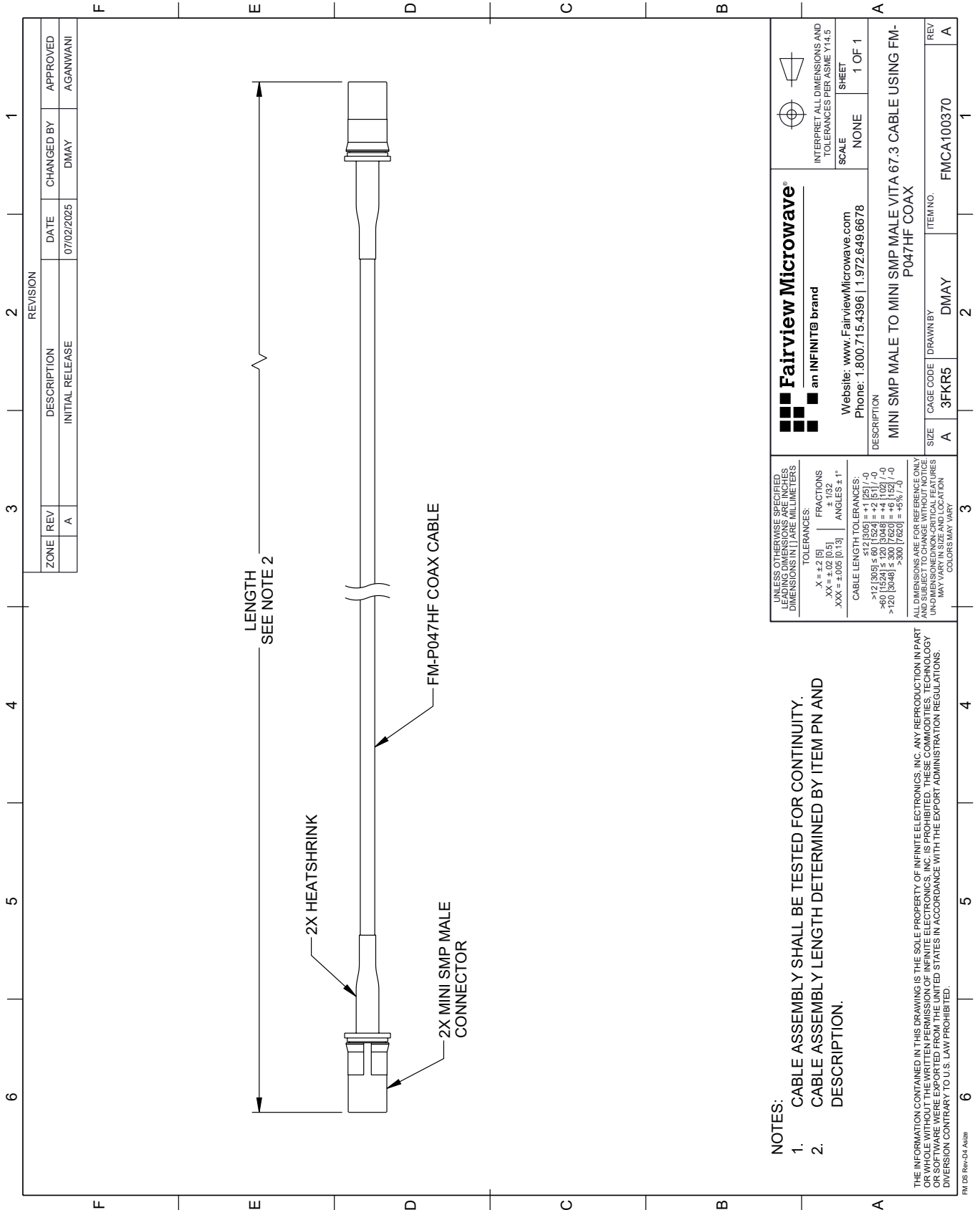
For additional information on this product, please click the following link: [VITA 67.3 Mini SMP Male to Mini SMP Male Cable FM-P047HF Coax FMCA100370](#)

URL: <https://www.fairviewmicrowave.com/vita-67.3-mini-smp-male-to-mini-smp-male-cable-fm-p047hf-coax-fm-ca100370-p.aspx>

The information contained within this document is accurate to the best of our knowledge and representative of the part described herein. It may be necessary to make modifications to the part and/or the documentation of the part in order to implement improvements. Fairview Microwave reserves the right to make such changes as required. Unless otherwise stated, all specifications are nominal. Fairview Microwave does not make any representation or warranty regarding the suitability of the part described herein for any particular purpose, and Fairview Microwave does not assume liability arising out of the use of any part or document.

FMCA100370 CAD Drawing

VITA 67.3 Mini SMP Male to Mini SMP Male Cable FM-P047HF Coax



REVISION			
ZONE	REV	DESCRIPTION	DATE
	A	INITIAL RELEASE	07/02/2025
CHANGED BY			APPROVED
DMAY			AGANWANI

 Fairview Microwave® an INFINIT® brand		 INTERPRET ALL DIMENSIONS AND TOLERANCES PER ASME Y14.5
Website: www.FairviewMicrowave.com Phone: 1.800.715.4396 1.972.649.6678		SCALE: NONE SHEET: 1 OF 1
DESCRIPTION: MINI SMP MALE TO MINI SMP MALE VITA 67.3 CABLE USING FM-P047HF COAX		
SIZE: A	CAGE CODE: 3FKR5	ITEM NO: FMCA100370
DRAWN BY: DMAY		REV: A

NOTES:

- CABLE ASSEMBLY SHALL BE TESTED FOR CONTINUITY.
- CABLE ASSEMBLY LENGTH DETERMINED BY ITEM PN AND DESCRIPTION.

UNLESS OTHERWISE SPECIFIED, LEADING DIMENSIONS ARE IN INCHES. DIMENSIONS IN [] ARE MILLIMETERS.

TOLERANCES:
 .X = ±.2 [5] FRACTIONS ± 1/32
 .XX = ±.02 [0.5] ANGLES ± 1°
 .XXX = ±.005 [0.13]

CABLE LENGTH TOLERANCES:
 >12 [305] ≤ 60 [1524] = ±.1 [25] / -0
 >60 [1524] ≤ 120 [3048] = ±.4 [102] / -0
 >120 [3048] ≤ 300 [7620] = ±.6 [152] / -0

ALL DIMENSIONS ARE FOR REFERENCE ONLY. UNDIMENSIONED NON-CRITICAL FEATURES MAY VARY IN SIZE AND LOCATION. COLORS MAY VARY.

THE INFORMATION CONTAINED IN THIS DRAWING IS THE SOLE PROPERTY OF INFINITE ELECTRONICS, INC. ANY REPRODUCTION IN PART OR WHOLE WITHOUT THE WRITTEN PERMISSION OF INFINITE ELECTRONICS, INC. IS PROHIBITED. THESE COMMODITIES, TECHNOLOGY OR SOFTWARE ARE EXPORTED FROM THE UNITED STATES IN ACCORDANCE WITH THE EXPORT ADMINISTRATION REGULATIONS. DIVERSION CONTRARY TO U.S. LAW PROHIBITED.

FM DS Rev-D4 Alt2b